

ADAMS COUNTY

2018 COMMUNITY REPORT



ADAMS COUNTY
COLORADO

Introducing
RIVERDALE REGIONAL PARK



LEFT TO RIGHT: Charles "Chaz" Tedesco, Eva J. Henry, Steve O'Dorisio, Mary Hodge, Erik Hansen

LETTER FROM THE COMMISSIONERS

Half-a-million. 500,000. No matter how you say it, our county is experiencing remarkable growth. In July 2018 our population surpassed 500,000. With new home construction and economic development at record highs, this Board of County Commissioners is incorporating demographic data, economic forecasting, and other strategic indicators to assist us in addressing the opportunities and challenges presented by this surge in population.

As you can see on the cover, we recently approved the adoption of a new master plan for Riverdale Regional Park. What you have known for years as Adams County Regional Park is expanding and will soon feature a unique blend of amenities. This historic corridor will now offer cultural and recreational opportunities from 120th Ave. to just north of E-470 where residents will soon enjoy access to the 174-acre Willow Bay property. We will begin the Master Planning process for Willow Bay later this year and encourage you to take part in shaping the future of this stunning acquisition.

While preserving your playgrounds and improving your quality of life is an identified goal of this Board, so is addressing the increasing demand on attainable housing for many of our residents. We are proud

of the partnerships we have leveraged in taking a comprehensive approach to new affordable housing developments. Working with community partners, residents in these developments will now have access to on-site services to assist with tutoring, family budgeting, childcare, and pop-up medical screenings. It's important to remember the rising property values enjoyed by some, are introducing a burden on others in our communities. We are proactively working to address this important issue, and our efforts to provide additional support to foster children and their families is the spirit behind a new program, Homes for Hope.

As we continue to look forward, we have our eyes on 21st century jobs and 21st century dreams. Our pursuit of a Spaceport license through the Federal Aviation Administration (FAA) is in the final review period. We are grateful to our Congressional Delegation for their bi-partisan support of this exciting application. The final word from the FAA is expected in August.

Thank you for taking the time to read this report. We encourage feedback and any questions you might have. Send an email to commissioners@adcogov.org, or call 720.523.6112.

ADAMS COUNTY ELECTED OFFICIALS



ASSESSOR
PATSY MELONAKIS

Email:
PMelonakis@adcogov.org
Phone: 720.523.6038



DISTRICT ATTORNEY
DAVE YOUNG

Email:
DYoung@adcogov.org
Phone: 303.659.7720



CORONER
MONICA BRONCUCIA-JORDAN

Email:
MBroncucia-Jordan@adcogov.org
Phone: 303.659.1027



CLERK & RECORDER
STAN MARTIN

Email:
SMartin@adcogov.org
Phone: 720.523.6020



SHERIFF
MICHAEL MCINTOSH

Email:
MMcIntosh@adcogov.org
Phone: 303.654.1850



TREASURER
BRIGITTE GRIMM

Email:
BGrimm@adcogov.org
Phone: 720.523.6160

SURVEYOR - TIM THOMS



LETTER FROM THE COUNTY MANAGER

I think it's fair to say Adams County is in my DNA. As a third-generation county resident, it was an honor to accept the position of County Manager in 2017. This is an exciting time in the county and our 2,162 dedicated employees are introducing more innovative ways

to improve our service delivery to you.

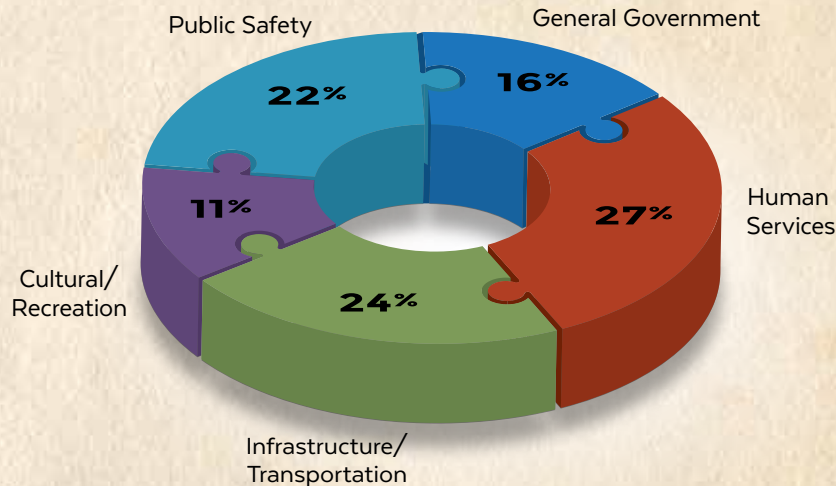
Our latest partnership with OpenGov helps deliver on our promise of transparency with a user-friendly tool that allows you to track how we're investing your tax dollars. You can find it, along with other online services, on our website under the "Save a Trip" menu. While we love visiting with you in person, we know your time is valuable, so we continue our work toward providing

more opportunities for you to access services on your terms.

I also want to encourage residents to become more connected with your local government. You are welcome to provide public comments at meetings of our Boards and Commissions. Better yet, consider applying to serve on one of these bodies. Adams County is committed to excellence in the delivery of services. Core values of Teamwork, Integrity, Innovation, Professionalism, and Inclusivity are principles which define the culture within our organization. These values inspire county employees to make ethical work decisions and provide an outstanding customer experience to our residents. *We are Adams!*

- *Raymond H. Gonzales*

2017 EXPENDITURES BY FUNCTION



ADAMS AT-A-GLANCE



Median Property Value - \$345,000



Median Household Income - \$61,444



Median Age - 33



Total Population - 501,371



Unincorporated Population - 98,271



Full Time County Employees - 2,162

2018 INFRASTRUCTURE INVESTMENTS



Parks & Open Space - \$2.2M



Road and Bridge Projects - \$12M



Public Safety - \$1.9M



Building Maintenance/New Construction - \$3.5M

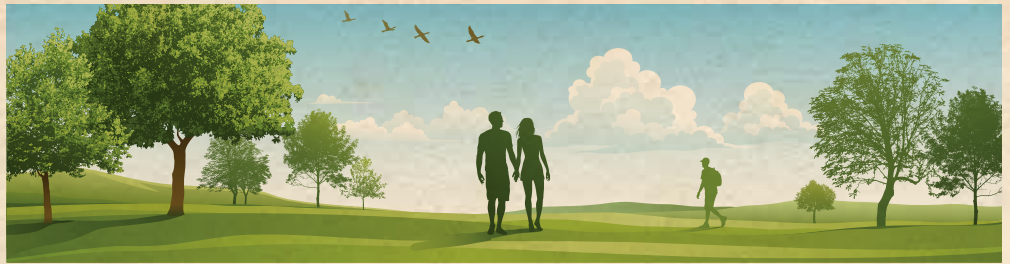


Gravel Roads Program - \$3.5M



Stormwater Improvements - \$1.8M

RIVERDALE REGIONAL PARK



The future Riverdale Regional Park is a planned space centered around community and quality of life, intertwining indoor and outdoor space and bringing together recreation, nature, history, and most importantly – community. The corridor extends from 120th Ave. on the south to just past E-470 on the north, Riverdale Rd. on the west to just shy of Brighton Rd. on the east.

The northern portion of the park will continue to accommodate the annual Adams County Fair and large events, while the southern portion of the park will be transformed into day-use facilities. New features to the park will include a nature/science center, bike and equine trails, indoor arena, outdoor ropes course, agricultural programming, the new Animal Shelter, and Willow Bay – an outdoor non-motorized aquatic recreation area.

COMMUNITY PARTNERSHIPS

Adams County is collaborating with a number of high-profile community partners, including Denver Botanic Gardens and Bird Conservancy of the Rockies, to offer hands-on exhibits and learning spaces for children, as well as classes and community events for all ages.

PARK BLVD. AND 120TH AVE. MAIN ENTRANCE

A major focus has been placed on better ingress, egress, and traffic flow throughout the park. A main north/south thoroughfare will be added in the center of the park and the new entrance will be moved to Park Blvd. and 120th Ave. for easier access. The expansion of Park Blvd. will allow for north to south circulation through the park and will provide access to new day-use park areas, the new Animal Shelter, and future cultural facilities.

REGIONAL PARK NORTH

The northern portion of the park starts just north of 124th Ave./Henderson Rd. and extends to slightly north of E-470. Enhancements in this portion of the park will include upgrades to the outdoor amphitheater, expanded playground, more open space and shelters, pavilions, additional restrooms, new ropes course, and an agricultural demonstration area. Proposed updates to the fairgrounds include a new multi-purpose indoor arena, grandstands, and new exhibit space in addition to enhanced amenities throughout the park.

REGIONAL PARK SOUTH

The southern portion of the park starts at 120th Ave. to the south and continues just north past 124th Ave./Henderson Rd. The new Animal Shelter will be located in the southern portion of the park along with the main park entrance on 120th Ave. Additional proposed amenities include a nature/science center, pavilion with adjacent restrooms, bike course, recreational water access to Mann Lake #3, agricultural programming, and additional parking and trailheads.

ANIMAL SHELTER

The new Animal Shelter, located in the southern portion of the park, will have enhanced services, modernized kennel spaces, an expanded health clinic, additional public parking, private adoption rooms, and a dedicated lost and found lobby, which will make for a better visitor experience. To better serve our community, a large multipurpose room will allow for more frequent public vaccination clinics, behavior support for new adopters, and humane education programs for youth to learn about animal safety and care.

WILLOW BAY

Willow Bay is a 174-acre property located adjacent to Riverdale Regional Park, north of E-470 on Brighton Rd., along the South Platte River Trail. Adams County partnered with the Trust for Public Land to acquire the property in 2017. Once the property opens to the public, patrons will have a picturesque space to enjoy non-motorized water activities such as canoeing and paddle boarding on the 110-acre lake. The property is expected to open to the public in 2022. Residents are encouraged to participate in the upcoming Master Planning process.

TRAIL SYSTEM

There are several trails throughout the park, both soft and hard surface, that offer a variety of recreational opportunities ranging from equine trails to bike trails, with the South Platte River Trail as the main trail spine throughout the park. The proposed trail enhancements include more trailheads and amenities such as signage, shade, and seating. A series of trails that connect to form a Cultural Trail that will provide active living and educational opportunities are also proposed, along with equine trails and a bike-sharing program.

For more information on the future Riverdale Regional Park and to read the full master plan, visit adcogov.org/parks-open-space.



ADAMS COUNTY
Riverdale
REGIONAL PARK

RIVERDALE GOLF COURSE

Within the Riverdale Golf Course you'll find The Dunes and The Knolls courses. Consistently rated as one of the top public courses, at an affordable price, The Dunes is a Scottish-style links course, meandering along the South Platte River. The Knolls is a traditional park-style layout, criss-crossed by canals, and is not to be taken lightly—you'll need good course management. Both courses are favorably priced and great options for golf enthusiasts.

ROUNDAABOUT

A roundabout will be placed at the intersection of 124th Ave./Henderson Rd. and the new Park Blvd., and will connect the north and south sides of the park. It's intended to slow traffic on 124th Ave./Henderson Rd., improve traffic flow through the park, and increase safety and comfort for park patrons.

TRAFFIC SIGNAL

A traffic signal will be placed at the new entrance to Riverdale Regional Park on 120th Ave. and Park Blvd., allowing for better ingress and egress, in addition to better traffic flow leading into and around the park. The new entrance will be adorned with flowers, plants, and foliage maintained by Denver Botanic Gardens and will be a beautiful site to see for visitors entering the park, and for those simply driving by.



SPACEPORT

Front Range Airport, located in Watkins, CO, has applied to the Federal Aviation Administration (FAA) for a Spaceport Colorado Launch Site Operator License. Effective Feb. 20, 2018, the FAA began its 180-day review period for Spaceport Colorado's Launch Site Operator License. The county will have a license determination from the FAA by August 19. We will continue to work closely with the FAA through this process and there is still very strong support and momentum from and within the FAA.

Our Vision

Spaceport Colorado will serve as America's hub for commercial space transportation and research and development. Horizontal launch facilities like Spaceport Colorado are developing around the world and have the potential to become the foundation for a global suborbital transportation network.

Located one mile closer to space, Colorado's aerospace companies, education institutions, and state leadership are growing aerospace talent and capabilities as the state's aerospace industry continues to expand.

Colorado's aerospace industry contributes significantly to the state's economic output and includes 180 aerospace companies and more than 500 suppliers and companies providing space-related products and services. Eight of the nation's leading aerospace contractors are headquartered in Colorado, along with major U.S. Department of Defense facilities, NASA research and development activities, and top-ranked universities for aerospace. In fact, Colorado ranked third in the nation in NASA prime contract awards totaling \$1.8 billion in 2016.

To learn more about Spaceport Colorado, visit spaceportcolorado.com.

ADAMS COUNTY SCHOLARSHIP FUND

Shaping Our Future

This year fifty-nine Adams County high school students were awarded scholarships totaling more than \$1 million through the Adams County Scholarship Fund. Adams County Commissioners introduced the Scholarship Fund in 2016 in partnership with the Colorado Department of Higher Education's Colorado Opportunity Scholarship Initiative.

The scholarships were funded with the voter-approved three percent sales tax on retail marijuana sales in the county. In addition, the Colorado Opportunity Scholarship Initiative matched the sales tax funds to increase the scholarship pool.



High-achieving students enrolled in the free and reduced lunch program were eligible to apply for one of the scholarships.



Adilene Garcia
CU Boulder Class of '21
Business Administration Major

I am grateful for the help I am receiving from the Adams County Scholarship Fund to continue my college career. It is a wonderful feeling knowing I am not on my own, and that I am able to focus on my growth as an individual instead of worrying about the costs. I have been introduced to a new, welcoming community and I could not be more grateful!

HOMES FOR HOPE

In September 2018, the newly renovated Homes for Hope will be available to provide emergency foster care for children ages 0-18, for up to 30 days, while alternative kinship home, foster home, or return to parent(s) options are explored. Approximately 8-10 children will be served at any time within the two residences. These emergency placements will be exclusively available for Adams County foster children.

While Adams County will prioritize placement of children ages 0-10, the foster homes will be licensed to serve youth up to age 18 to support the priority of keeping sibling groups together during emergency placement. Teen moms placed into foster care with infants will be able to stay at the homes until an alternative long-term option is found. Host families selected by the Child Protection Agency will live in the homes to care for the children placed in the homes.

Adams County acquired the two homes with funding from an Open Space Grant from Great Outdoors Colorado Trust Fund and an Adams County Open Space Grant. The Board of County Commissioners approved \$675,000 for the home renovations, which started in May 2018. Providing these two Homes for Hope for foster children in Adams County is estimated to save the county \$155,000 per year in foster care placement costs.



NEW E-PERMIT CENTER WEBSITE

The Community and Economic Development Department launched a new E-Permit Center website in May 2018. The E-Permit Center has been online since early 2017, allowing customers to apply for, review, pay for, and print out building permits at any time from any computer or mobile device. The new website also features frequently asked questions, a fee estimator, submittal checklists, building code information, and more. Visit epermits.adcogov.org to view the new website.



NEW ANIMAL SHELTER WEBSITE

Finding your new furry family member has never been easier than with the help of the new Adams County Animal Shelter/Adoption Center (ACASAC) website. The new website provides improved functionality, accessibility, and easy-to-use tools for searching adoptable or lost pets as well as the variety of services offered by ACASAC.

In addition to searching for adoptable or lost pets, the new website offers information on registering lost pets, vaccination and microchip clinics, licensing, contact information for Denver Metro animal shelters and animal control, and more. Visitors can also learn more about the new shelter, which is set to break ground in 2018.

Visit the new website and learn more about the services provided at animalshelter.adcogov.org.



PRSR STD
US POSTAGE
PAID
PERMIT NO. 3280
DENVER, CO

STAY CONNECTED

4430 S. Adams County Pkwy., Brighton, CO 80601

/AdamsCountyGov @AdamsCountyGov

Local Agencies /AdamsCountyCo

Adcogov.org

ECRWSS
POSTAL CUSTOMER

IMPORTANT NUMBERS

MAIN LINE	303.659.2120
ANIMAL SHELTER/ ADOPTION CENTER	720.523.7387
ASSESSOR'S OFFICE	720.523.6038
BUILDING PERMITS/ CODE COMPLIANCE	720.523.6800
CLERK & RECORDER	720.523.6020
ELECTIONS	720.523.6500
GRAFFITI HOTLINE	720.523.6565
HUMAN SERVICES	720.523.2000
MOTOR VEHICLE	720.523.6010
PARKS & OPEN SPACE	303.637.8000
ROADWAY/BRIDGE MAINTENANCE	303.853.7137
SHERIFF'S OFFICE (911 FOR EMERGENCIES)	303.654.1850
TREASURER'S OFFICE	720.523.6160
WORKFORCE & BUSINESS CENTER	720.523.2400

SAVE A TRIP

Check out the Adams County website adcogov.org. Look under the "Save a Trip" section to see the items you can take care of online.

- Apply for Assistance
- Driver's License Information
- E-Permit Center (Apply for permits online)
- Get a Ballot
- Look Up Property Information/Zoning
- Pay My Stormwater Utility Fee
- Pay My Taxes
- Perform Public Records Search
- Renew Vehicle Registration
- Schedule a Building Inspection
- OpenGov



EVENTS

- **Wednesday, Aug. 1**
Back the Blue Night, FREE Midland Concert, 8 p.m.
- **Thursday, Aug. 2**
Professional Bull Riding, 6 p.m., Granger Smith Concert, 8:30 p.m.
- **Friday, Aug. 3**
Demolition Derby and Fireworks, 7 p.m.
- **Saturday, Aug. 4**
Funnel Cake 5K, Riverdale Regional Park, 7:30 a.m.
NSPA Truck Pull, 7 p.m.
- **Sunday, Aug. 5**
Dia de la Familia, Charreada 3 p.m.,
Invasores de Nuevo Leon Concert, 5:30 p.m.

FREE ACTIVITIES

- **Senior Day, Thursday, Aug. 2, 10 a.m. – 3 p.m.**
- **9News Kids Day, Friday, Aug. 3, 10 a.m. – 3 p.m.**
- **Water World Kids Zone**
- **Kodiak Ranch Petting Zoo**
- **Budweiser Free Entertainment Stage, Daily free concerts**

For more information and to purchase tickets, visit adamscountyfair.com.

STAY CONNECTED: /AdamsCountyFairCO AdamsCountyFair AdamsCountyFair #unfairgettable