



Community & Economic Development Department

4430 South Adams County Parkway,
1st Floor, Suite W2000
Brighton, CO 80601-8205
PHONE 720.523.6800 FAX 720.523.6967

MEMORANDUM

To: Noel Bernal, County Manager
From: Greg Dean, Oil & Gas Administrator
Through: Alisha Reis, Deputy County Manager
Jenni Hall, Director, Community & Economic Development
Chase Evans, Deputy Director, Community & Economic Development
Katie Keefe, Environmental Program Manager
Date: December 7, 2022
Subject: Adams County Orphan Well Remediation Progress Update

Executive Summary:

There are currently at least 1,150 orphaned wells or sites in Colorado, of which 302 are in the County, the most in the state. The plugging, remediation, and reclamation of orphaned sites is managed through the Orphaned Well Program (OWP) at the Colorado Oil and Gas Conservation Commission (COGCC). Financing for the OWP is sourced from various operator-funded mechanisms and congressionally authorized federal grants rather than from the state General Fund. Multiple orphaned sites in Adams County were selected as one of the state's first large-scale remediation projects using federal grant funds and is expected to commence in early 2023. Orphaned wells present higher risks to public health, safety, welfare, the environment and wildlife resources (PHSWEW) in the form of historical releases and spills that can impact soil and groundwater or via leaks of methane, greenhouse gases, or Hazardous Air Pollutants. One of these significant threats are associated with buried flowlines and deteriorating production facilities, rather than simply the wellheads themselves. Based on recent COGCC emergency reclamation work, there is an estimated 250 miles or more of these buried flowlines associated with orphaned sites across the County. Given the nature of the upstream oil and gas infrastructure in the County and the increased risk orphaned facilities present, any increase in their numbers could lead to a disproportionate impact to the County's residents and resources compared to other jurisdictions in the state.

Financial Assurance & Remediation Funding Sources:

An orphaned well or site is an oil and gas facility for which no owner or operator can be found or where an owner is unwilling or unable to maintain responsibility for the compliance and reclamation of the facility. In these instances, the oil and gas facilities become the

responsibility of the state for the purposes of plugging, decommissioning, and reclamation, through the state's OWP, administered through the COGCC. The OWP, created in 2017, was expanded and strengthened in 2021 and 2022 as a result of the passage of Senate Bill 19-181 and Senate Bill 22-198 in the Colorado legislature. This included mandated amendments to COGCC rules regarding financial assurance regulations requiring operators to demonstrate they are financially capable of fulfilling every obligation imposed in the revised Oil and Gas Conservation Act, specifically surrounding plugging and reclamation. The provisions include rules regarding, among other things, single well and blanket bonding on all wells, revised well classifications, expanded asset transfer reviews, and plugging timeline requirements. These recent changes also included the adoption of an annual per well fee to be paid into the Orphan Well Fund (OWF) to supplement other operator-sourced funding (i.e. penalties, fines, and a mill-levy on production), anticipated to generate \$10 million per year into the OWF. These fees, paid by operators, and the OWF is managed by an independent Enterprise Board appointed by the Governor. *The first Orphan Well Mitigation Enterprise Board appointed by Governor Polis will convene in December 2022 to evaluate the most appropriate per well fee necessary to support the OWF.*

In October 2022, the OWP received Federal Infrastructure Investment & Jobs Act funds in an Initial Grant of \$25 million for use through Fall 2024. After the Initial Grant expires the OWP could be eligible for up to an additional \$54 million (total of \$79 million in Colorado, \$2.6 billion nationally) from the federal government as additional grants allowed through that legislation, pending congressional oversight. Federal funding streams are entirely independent and unassociated with the OWF. The annual state budget appropriation for the OWP does not come from revenue collected via state income taxes or the General Fund. **Currently the COGCC does not have a mechanism or program established to distribute funds or reimbursements directly to local governments for orphan site mitigation.**

Site Prioritization & Remediation:

Orphaned wells and sites are prioritized by the COGCC/OWP for plugging, abandonment, reclamation, and remediation through the Field Inspection Priority System using several weighted-factors that could impact PHSWEW such as the age of a facility, environmental risks, and population density. Orphaned wells are then prioritized by their score as high, medium, and low priority and added to the orphaned well list for eventual decommissioning.

As presented by the COGCC, the median cost to plug, decommission, and reclaim an orphan site was approximately \$93,000 per well/site in 2021. Where there is known or suspected contamination of soil and/or groundwater at a site, the cost to fully remediate is expected to be significantly higher. For example, two orphaned sites in unincorporated Adams

County, the North Colorado Blvd #1 and Kortum #3 both had historical impacts to environmental resources discovered during remediation and as such have increased estimated final costs to the OWP of \$175,932 and \$126,000, respectively to fully decommission.

Seized financial assurance must be applied to that operator's facilities and wells and are not deposited directly into the OWF for general use. According to OWP Staff, COGCC's current policy is to allocate all forfeited bond amounts first, before utilizing monies from the OWF. This policy can cause delays in remediation and plugging work for certain projects as the COGCC must sometimes wait for bankruptcy courts and associated creditors to release those funds to the state before plugging and remediation can commence on any of those facilities, absent ongoing serious impacts to PHSWEW. Pre-2022, financial assurance bonds required by the COGCC were significantly less than \$8,500 per well. Revisions to state financial assurance requirements have increased bonding amounts depending on an operator's risk, compliance history, and asset portfolio. Where single well bonding (rather than blanket bonding) is required, depending on historical production volumes, an operator must file assurance with the COGCC between \$110,000 and \$140,000 per well/facility depending on well depth to be collected over time.

Adams County Orphan Well and Reclamation Progress Update:

As of December 1, 2022, there are at least 1,150 orphaned wells and sites statewide for which plugging, and reclamation work is in progress or planned. At the time of this report, there were 302 orphan wells and sites scattered across the County (see Figure 1 and Orphan Well List), representing nearly an 1,100% increase since July 2021. Of this total, 17 are classified as High Priority, 257 Medium Priority, 23 Low Priority, and 5 are pending evaluation based on the COGCC prioritization system. Adams County is home to more than 26% of all orphan wells in the state, the most of any other jurisdiction (Morgan County has 205 wells, Logan County has 110 wells, Weld County has 82 wells, and La Plata County with 80 wells).

As reported by the COGCC, orphaned facilities present inherently higher risks to PHSWEW in the form of historical releases and spills impacting soil and groundwater or leaks of methane, greenhouse gases, or Hazardous Air Pollutants. In the past two years, historical spills and releases discovered during reclamation, closure, and plugging and abandonment operations accounted for more than two-thirds of the nearly 100 reported spills and releases in the County, primarily from older vertical wells and associated equipment. Since June 2021, there have been 36 spills, releases, and leaks reported at orphan well sites located within the County, 20

of those were discovered by the County's Oil & Gas Inspectors, through a partnership with the OWP to inspect these facilities, that began in March 2022.

The OWP will shortly commence the first remediation project utilizing federal funds from the \$25 million Initial Grant, named the "PetroShare Adams Project". In summer 2021, PetroShare Corporation orphaned 58 wells and sites statewide, 50 in Adams County (86%). Many of these PetroShare orphaned wells are in densely populated areas of the County adjacent to Highway 7. This OWP project will begin reclamation activity at approximately 20 facilities and will include plugging wells, removing liquid storage tanks and vessels, decommissioning buried flowlines, and conducting any required remediation from discovered contamination of natural resources.

From Staff conversations with OWP personnel, one of most significant threats to PHSWEW from orphan sites are associated with buried off-location flowlines and deteriorating production facilities (storage tanks and vessels), rather than simply from wellheads themselves. Flowlines were almost entirely unregulated by the state until the passage of Senate Bill 19-181. The resultant flowline rulemaking now requires operators to locate, test, and report these lines to the COGCC for the first time (effective January 2020). Historically, companies would rely on private and often informal negotiations and agreements with landowners regarding the installation of flowlines and there was no industry protocol, standard, or statutory requirement for their placement, path, material, service and repair, and decommissioning, abandonment, and removal. Most operators who have orphaned their facilities to-date did so without reporting the location or status of their buried lines to the state, leaving the monumental task to the OWP. Figure 2 demonstrates the potential impacts posed to PHSWEW by orphaned flowlines by illustrating realistic (and unknown) paths of these buried lines from just one orphaned facility in the County (Painted Pegasus's Nile Field).

Further expanding on the example from Figure 2, in April 2022, all 196 wells operated by Painted Pegasus Petroleum (P3) were added to the orphan well list after the company filed for bankruptcy, with 188 of these sites located within the County (96%). The COGCC still is awaiting final legal approval and release of approximately \$300,000 in seized bonds for these P3 wells before full-scale clean-up can start. Based on recent discoveries of natural gas leaks, crude oil and produced water spills, and other releases at some of these facilities made by County inspectors, the OWP has been able to allocate emergency appropriation funds to commence plugging and reclamation activities on 13 of the 188 P3 facilities in the County that demonstrate the most immediate, ongoing, and highest risk potential to PHSWEW. During this emergency work, crews unearthed approximately 6-10 miles of buried flowlines from those specific facilities, resulting in the discovery of additional historical impacts to natural resources.

OWP reporting to the County indicates many of these P3 flowline sets (and other flowlines statewide) contained various vintages and material of pipe, followed circuitous or tortuous subsurface routes, included seemingly mysterious lines with no direct connections to production facilities, and demonstrated frequent contamination to soil and/or groundwater from decades of dilapidation and disrepair. From this emergency work, it is anticipated there could be conservatively more than 250 miles of similarly buried flowlines from all orphaned sites across the County (nearly 1,000 miles statewide), most of which the location, material, and integrity will remain unknown until work can commence.

A major limitation in reclaiming these orphaned sites and flowlines is the availability of the highly specialized crews and equipment required to locate and remove these pipes and remediate the long-term historical environmental impacts. Approximately \$2 million in emergency OWP procurement funding has been spent to-date on the initiation of reclamation of these 13 P3 orphan wells in the County (nearly \$155,000 per well). At the time of this report, none of these facilities have been completely reclaimed and costs could easily double once liquid storage tanks are fully decommissioned, flowlines are located and removed, and environmental impacts remediated. This highlights the importance of advocating at the COGCC and with the Orphan Well Mitigation Enterprise Board for the strongest possible financial assurance regulatory enforcement and the most appropriate and necessary annual per well fee assessments on active wells to fund the current and future demands of the OWP.

Based on this reality and COGCC risk determination, the County appears to be in a unique situation where many of the older vertical wells in its jurisdiction have a higher risk of becoming orphaned in the future. This could be particularly true as the new financial assurance regulations take effect throughout 2023 as some operators may not be financially solvent enough to secure required bonding to fulfill their facility decommissioning responsibilities. This could leave hundreds or thousands of additional wells in the state orphaned. This disparity in high risk wells is alarming because any continued expansive or rapid increase in orphaned sites would likely lead to a disproportionate share of such sites within the County compared to other jurisdictions in the state. The current volume of orphaned facilities will take decades to fully plug, reclaim, and remediate at an estimated cost of more than \$115 million statewide (\$30 million+ in Adams County), not including any additional increases to the orphan well count. At current rates, wells classified as high risk typically commence remediation within a few years, whereas medium and low risk orphaned wells can take 5 years or more based on funding and crew availability. This will further prolong impacts to the County's water, soil, and air resources, increase the potential for public health, safety, and welfare impacts to residents, and potentially delay or impede residential, commercial, and agricultural development.

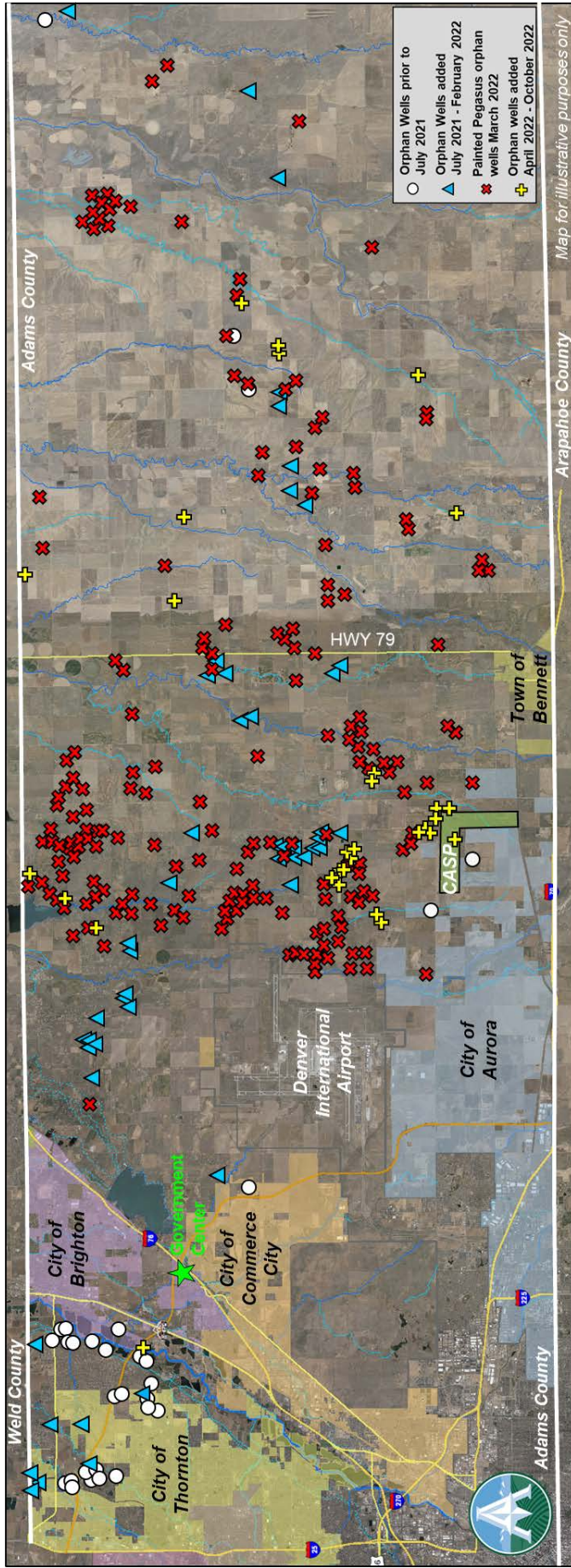


Figure 1: Map of orphan wells in Adams County as of December 2022 (302 Wells), based on time they were added to the Orphan Well List.

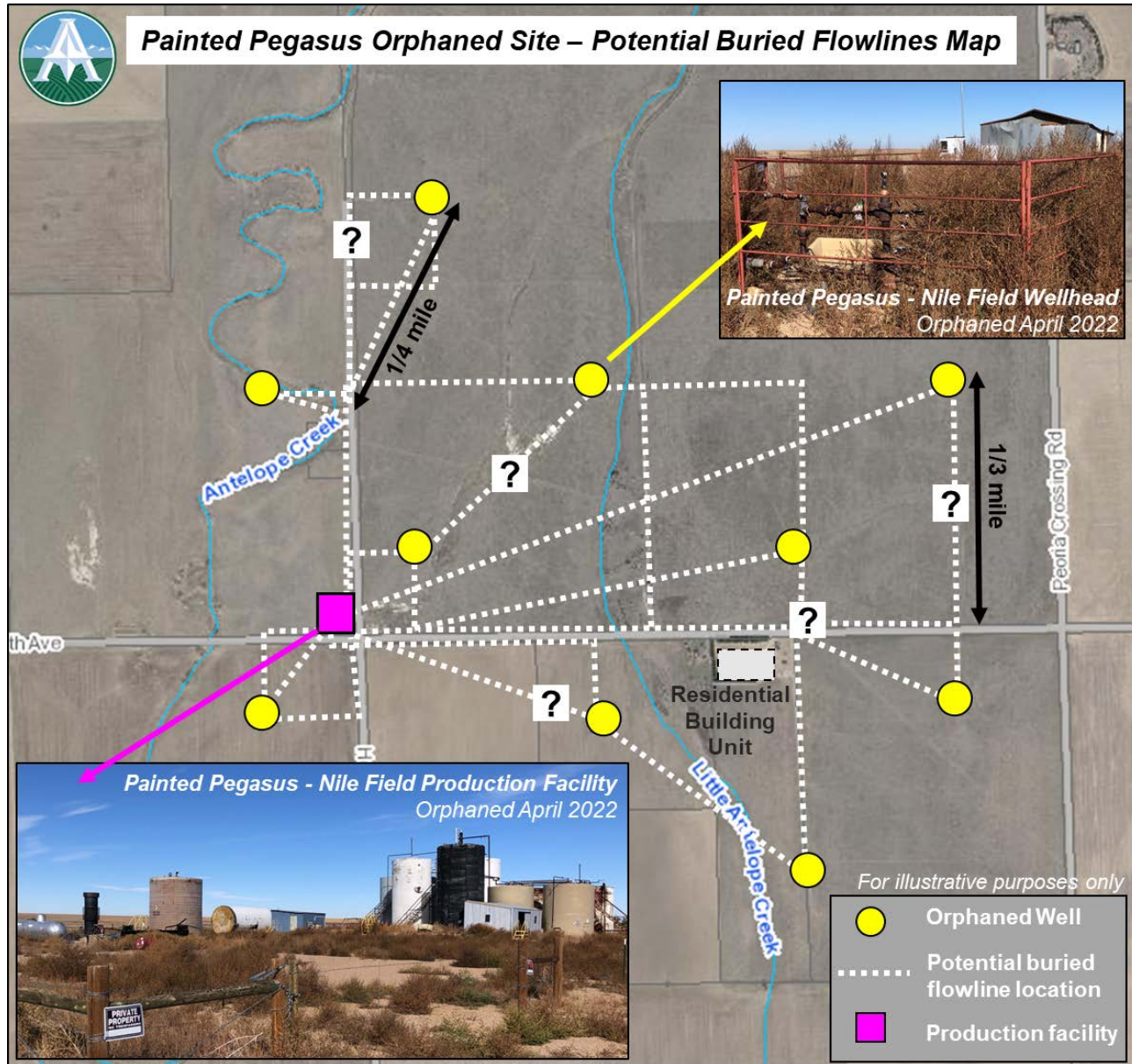


Figure 2: Illustrative map of some of the potential and unknown paths of buried flowlines from one orphan facility in Adams County (Painted Pegasus Nile Field).

Adams County Orphan Well List - November 2022

Compiled by Greg Dean, Oil & Gas Administrator, gdean@adcogov.org

	Loc ID	Operator Name	Well / Site / Lease Name & Number	Site Status	County	Jurisdiction	Priority Rank
1	320319	BARNES PETROLEUM	Rosener #1	In Progress	Adams	Unincorporated	Medium
2	319883	BEHRENS RESOURCES	Allison, Nora #1	Planned	Adams	Unincorporated	Medium
3	320123	BEHRENS RESOURCES	Blick-Farms #1-6	Planned	Adams	Unincorporated	Medium
4	320087	BEHRENS RESOURCES	C-Lisco #14-21	Planned	Adams	Unincorporated	Medium
5	320104	BEHRENS RESOURCES	C-Lisco #14-31	Planned	Adams	Unincorporated	Medium
6	475501	BEHRENS RESOURCES	Farm Ranch Exploration	Planned	Adams	Unincorporated	Medium
7	475504	BEHRENS RESOURCES	Farm Ranch Exploration	Planned	Adams	Unincorporated	Medium
8	319972	BEHRENS RESOURCES	Farm Ranch Explor #1	Planned	Adams	Unincorporated	Medium
9	320017	BEHRENS RESOURCES	Farm Ranch Explor #2	Planned	Adams	Unincorporated	Medium
10	320067	BEHRENS RESOURCES	Farm Ranch Explor #3	Planned	Adams	Unincorporated	Medium
11	320080	BEHRENS RESOURCES	Farm Ranch Explor #6	Planned	Adams	Unincorporated	Medium
12	320051	BEHRENS RESOURCES	Gary-State #36-16	Planned	Adams	Unincorporated	Medium
13	320115	BEHRENS RESOURCES	Handke #1	Planned	Adams	Unincorporated	Medium
14	428424	BEHRENS RESOURCES	Handke #3	Planned	Adams	Unincorporated	Medium
15	429664	BEHRENS RESOURCES	Handke #3 and #4 Facility	Planned	Adams	Unincorporated	Medium
16	428424	BEHRENS RESOURCES	Handke #4	Planned	Adams	Unincorporated	Medium
17	320063	BEHRENS RESOURCES	Lisco #14-32	Planned	Adams	Unincorporated	Medium
18	319845	BEHRENS RESOURCES	Muegge #6-1	Planned	Adams	Unincorporated	High
19	475498	BEHRENS RESOURCES	Piland-Tupps-Lisco	Planned	Adams	Unincorporated	Low
20	320010	BEHRENS RESOURCES	Piland-Tupps-Lisco #1	Planned	Adams	Unincorporated	Medium
21	375271	BRUNEL- JOHN H	Martyn #1	Planned	Adams	Unincorporated	Medium
22	377479	EMAN OIL CORP	Eman #1	Planned	Adams	Aurora	Medium
23	468096	ENERGY SEARCH CO	DR Horton Flowline	In Progress	Adams	Thornton	Low
24	320267	ENERGY SEARCH CO	Green #2	In Progress	Adams	Unincorporated	High
25	320268	ENERGY SEARCH CO	Green #3	In Progress	Adams	Thornton	High
26	319874	ENERGY SEARCH CO	Kortum #3	In Progress	Adams	Unincorporated	High
27	319667	ENERGY SEARCH CO	Kortum #7	In Progress	Adams	Unincorporated	High
28	319856	ENERGY SEARCH CO	North Colorado Blvd #1	In Progress	Adams	Unincorporated	High
29	333070	ENERGY SEARCH CO	North Colorado Blvd #4	In Progress	Adams	Unincorporated	Medium
30	319812	ENERGY SEARCH CO	Tsuzuki #2	In Progress	Adams	Thornton	Medium
31	319813	ENERGY SEARCH CO	Tsuzuki #3	In Progress	Adams	Thornton	High
32	444886	ENERGY SEARCH CO	Tsuzuki #5/6 Tank Battery	In Progress	Adams	Thornton	Medium
33	444882	ENERGY SEARCH CO	Tsuzuki Battery Location	In Progress	Adams	Thornton	High
34	376969	GOLDEN BEAR ENERGY	Laney #1	Planned	Adams	Unincorporated	Medium
35	375821	J M RESOURCES	Horst #1	In Progress	Adams	Unincorporated	Medium
36	320135	MCCLANE ENERGY	Van Scoyk #1	Planned	Adams	Unincorporated	Pending
37	375115	MONSANTO OIL	Hans #3	Planned	Adams	Unincorporated	Medium
38	320303	NRG	Lewton Company F Unit #1	Planned	Adams	Unincorporated	Medium
39	320127	NRG	RMPCO-UPRR-Nichols	Planned	Adams	Unincorporated	Medium
40	320523	PAINTED PEGASUS	Abbott #10-43	Planned	Adams	Unincorporated	Medium
41	320119	PAINTED PEGASUS	Abbott #11-14	Planned	Adams	Unincorporated	Medium
42	320033	PAINTED PEGASUS	Abbott #12-14	Planned	Adams	Unincorporated	Medium
43	320477	PAINTED PEGASUS	Abbott #12-21	Planned	Adams	Unincorporated	Medium
44	320047	PAINTED PEGASUS	Abbott #33-10	Planned	Adams	Unincorporated	Medium

45	320029	PAINTED PEGASUS	Abbott #43-10	Planned	Adams	Unincorporated	Medium
46	320060	PAINTED PEGASUS	Abbott Lands #32-7	Planned	Adams	Unincorporated	Medium
47	320374	PAINTED PEGASUS	Ambush #31-22	Planned	Adams	Unincorporated	Medium
48	320040	PAINTED PEGASUS	Ann #34-12	In Progress	Adams	Unincorporated	Medium
49	481857	PAINTED PEGASUS	Ann & Sandie Tank Battery	Planned	Adams	Unincorporated	Low
50	320003	PAINTED PEGASUS	Antelope Farms 41-23 #2	Planned	Adams	Unincorporated	Medium
51	320110	PAINTED PEGASUS	Atwater 24-1 #4	Planned	Adams	Unincorporated	Medium
52	320161	PAINTED PEGASUS	Banter-Morris #23-4	Planned	Adams	Unincorporated	Medium
53	320180	PAINTED PEGASUS	Bass-Linnebur #12-21	Planned	Adams	Unincorporated	Medium
54	319654	PAINTED PEGASUS	Baughman Farms #2-31	Planned	Adams	Unincorporated	Medium
55	320032	PAINTED PEGASUS	Becker #1-32	Planned	Adams	Unincorporated	Medium
56	319927	PAINTED PEGASUS	Bowen USX AL #29-8	Planned	Adams	Unincorporated	Medium
57	319752	PAINTED PEGASUS	Box Elder G	In Progress	Adams	Unincorporated	Medium
58	320565	PAINTED PEGASUS	Box Elder G	Planned	Adams	Unincorporated	Medium
59	320577	PAINTED PEGASUS	Box Elder G	Planned	Adams	Unincorporated	Medium
60	320058	PAINTED PEGASUS	Carlson #32-33	Planned	Adams	Unincorporated	Medium
61	320090	PAINTED PEGASUS	Carlson #41-33	Planned	Adams	Unincorporated	Medium
62	320044	PAINTED PEGASUS	Carlson #42-33	Planned	Adams	Unincorporated	Medium
63	320414	PAINTED PEGASUS	Cavalier #2	Planned	Adams	Unincorporated	Medium
64	319971	PAINTED PEGASUS	Champlin #1-31	Planned	Adams	Unincorporated	Medium
65	319885	PAINTED PEGASUS	Champlin 351 AM A #1	In Progress	Adams	Unincorporated	Medium
66	319907	PAINTED PEGASUS	Champlin 459 Amoco	Planned	Adams	Unincorporated	Medium
67	319997	PAINTED PEGASUS	Champlin 459 Amoco	Planned	Adams	Unincorporated	Medium
68	319913	PAINTED PEGASUS	Champlin 67 Amoco G	Planned	Adams	Unincorporated	Medium
69	319946	PAINTED PEGASUS	Champlin 73 Amoco 39B	Planned	Adams	Unincorporated	Medium
70	319886	PAINTED PEGASUS	Champlin 75 Amoco G	Planned	Adams	Unincorporated	Medium
71	319903	PAINTED PEGASUS	Champlin 75 Amoco H	Planned	Adams	Unincorporated	Medium
72	319932	PAINTED PEGASUS	Champlin 75 Amoco J	Planned	Adams	Unincorporated	Medium
73	320594	PAINTED PEGASUS	Champlin Danford	Planned	Adams	Unincorporated	Medium
74	320607	PAINTED PEGASUS	Champlin Danford #43-32	Planned	Adams	Unincorporated	Medium
75	320609	PAINTED PEGASUS	Champlin Danford #44-32	Planned	Adams	Unincorporated	Medium
76	319785	PAINTED PEGASUS	Champlin-Danford #1	Planned	Adams	Unincorporated	Medium
77	320166	PAINTED PEGASUS	Crystal-Hubbs #1	Planned	Adams	Unincorporated	Medium
78	320168	PAINTED PEGASUS	Danford #13-31	Planned	Adams	Unincorporated	Medium
79	319989	PAINTED PEGASUS	Danford-Champlin #1-24	Planned	Adams	Aurora	Medium
80	320434	PAINTED PEGASUS	Discovery	Planned	Adams	Unincorporated	Medium
81	320525	PAINTED PEGASUS	Double A #32-17	Planned	Adams	Unincorporated	Medium
82	319646	PAINTED PEGASUS	Double Bar O #2-18	Planned	Adams	Unincorporated	Medium
83	319701	PAINTED PEGASUS	Double USX ZM	Planned	Adams	Unincorporated	Medium
84	320243	PAINTED PEGASUS	Downing #44-25	Planned	Adams	Unincorporated	Medium
85	320584	PAINTED PEGASUS	Egan State	Planned	Adams	Unincorporated	Medium
86	319766	PAINTED PEGASUS	Egan State #1	Planned	Adams	Unincorporated	Medium
87	320585	PAINTED PEGASUS	Egan State #21-36	Planned	Adams	Unincorporated	Medium
88	320613	PAINTED PEGASUS	Egan State #43-36	Planned	Adams	Unincorporated	Medium
89	319660	PAINTED PEGASUS	Ehn #3-20	Planned	Adams	Unincorporated	Medium
90	319661	PAINTED PEGASUS	Ehn #4-20	Planned	Adams	Unincorporated	Medium
91	320145	PAINTED PEGASUS	Eiffel #1	In Progress	Adams	Unincorporated	Medium
92	320103	PAINTED PEGASUS	Elaine #41-18	Planned	Adams	Unincorporated	Medium
93	320042	PAINTED PEGASUS	Eleanor Arnold #1	In Progress	Adams	Unincorporated	Medium

94	320084	PAINTED PEGASUS	Eleanor Arnold B	Planned	Adams	Unincorporated	Medium
95	319710	PAINTED PEGASUS	Ferguson #2	Planned	Adams	Unincorporated	Medium
96	319708	PAINTED PEGASUS	Ferguson #42-25	Planned	Adams	Unincorporated	Medium
97	320041	PAINTED PEGASUS	Flo #33-24	Planned	Adams	Unincorporated	Medium
98	320007	PAINTED PEGASUS	Foreman #2	Planned	Adams	Unincorporated	Medium
99	319657	PAINTED PEGASUS	Fred JR #41-22	Planned	Adams	Unincorporated	Medium
100	320589	PAINTED PEGASUS	Frihauf-USX CK #25-3	Planned	Adams	Unincorporated	Medium
101	320048	PAINTED PEGASUS	George Sauter #1	Planned	Adams	Unincorporated	Medium
102	320027	PAINTED PEGASUS	Georgene #32-12	Planned	Adams	Unincorporated	Medium
103	319876	PAINTED PEGASUS	Greenemeier #9-30	Planned	Adams	Unincorporated	Medium
104	319735	PAINTED PEGASUS	Habel #4	In Progress	Adams	Unincorporated	Medium
105	319924	PAINTED PEGASUS	Habel #7	Planned	Adams	Unincorporated	Medium
106	481724	PAINTED PEGASUS	Habel 4 Tank Battery	In Progress	Adams	Unincorporated	Low
107	319763	PAINTED PEGASUS	Hanson #1	Planned	Adams	Unincorporated	Medium
108	320588	PAINTED PEGASUS	Hanson #23-30	Planned	Adams	Unincorporated	Medium
109	320028	PAINTED PEGASUS	Hartman #21-14	Planned	Adams	Unincorporated	Medium
110	319979	PAINTED PEGASUS	Hazlet B #1	Planned	Adams	Unincorporated	Medium
111	319970	PAINTED PEGASUS	Hazlet B #2	Planned	Adams	Unincorporated	Medium
112	320365	PAINTED PEGASUS	Helix #1	Planned	Adams	Unincorporated	Medium
113	320534	PAINTED PEGASUS	Helming #43-19	In Progress	Adams	Unincorporated	Medium
114	320148	PAINTED PEGASUS	Helzer Farms #1	Planned	Adams	Unincorporated	Medium
115	320498	PAINTED PEGASUS	Her #43-5	Planned	Adams	Unincorporated	Low
116	113766	PAINTED PEGASUS	Hirsch #1-20	Planned	Adams	Unincorporated	Low
117	320194	PAINTED PEGASUS	Hirsch #2	Planned	Adams	Unincorporated	Medium
118	320073	PAINTED PEGASUS	Hokr #20-1	In Progress	Adams	Unincorporated	Medium
119	320111	PAINTED PEGASUS	Horth #32-15	Planned	Adams	Unincorporated	Medium
120	320112	PAINTED PEGASUS	Horth 41-15 #1	In Progress	Adams	Unincorporated	Medium
121	319683	PAINTED PEGASUS	Hosmer #14-34	Planned	Adams	Unincorporated	Medium
122	320079	PAINTED PEGASUS	Hosmer #21-32	Planned	Adams	Unincorporated	Medium
123	319954	PAINTED PEGASUS	Hosmer #32-29	Planned	Adams	Unincorporated	Medium
124	320289	PAINTED PEGASUS	Hosmer #43-32	Planned	Adams	Unincorporated	Medium
125	320398	PAINTED PEGASUS	HSR Gregg #15-10	Planned	Adams	Unincorporated	Medium
126	320432	PAINTED PEGASUS	HSR-Barclay #13-29	Planned	Adams	Unincorporated	Medium
127	320450	PAINTED PEGASUS	HSR-Bowen Farms #3-9	Planned	Adams	Unincorporated	Medium
128	320449	PAINTED PEGASUS	HSR-Lonnie #11-8	Planned	Adams	Unincorporated	Medium
129	320448	PAINTED PEGASUS	HSR-Lonnie #7-8	In Progress	Adams	Unincorporated	Medium
130	320384	PAINTED PEGASUS	Jackie #1	In Progress	Adams	Unincorporated	Medium
131	319645	PAINTED PEGASUS	Jan #1	Planned	Adams	Unincorporated	Medium
132	320162	PAINTED PEGASUS	Johnson #28-11	Planned	Adams	Unincorporated	Medium
133	320088	PAINTED PEGASUS	Joy #21-4	Planned	Adams	Unincorporated	Medium
134	320133	PAINTED PEGASUS	Juanita State #1	Planned	Adams	Unincorporated	Medium
135	320147	PAINTED PEGASUS	Kalcevic Farms #32-3	Planned	Adams	Unincorporated	Medium
136	320358	PAINTED PEGASUS	Kallsen #15-1	Planned	Adams	Unincorporated	Medium
137	320387	PAINTED PEGASUS	Kelton #31-8	Planned	Adams	Unincorporated	Medium
138	320363	PAINTED PEGASUS	Kelton #32-8	Planned	Adams	Unincorporated	Medium
139	320389	PAINTED PEGASUS	Kelton #39	Planned	Adams	Unincorporated	Medium
140	320355	PAINTED PEGASUS	Kelton #39-A	Planned	Adams	Unincorporated	Medium
141	320382	PAINTED PEGASUS	Kelton #39-B	Planned	Adams	Unincorporated	Medium
142	320381	PAINTED PEGASUS	Kelton #A-2	Planned	Adams	Unincorporated	Medium

143	320386	PAINTED PEGASUS	Kelton #A-3	Planned	Adams	Unincorporated	Medium
144	319962	PAINTED PEGASUS	Kiowa-Frick #1-12	Planned	Adams	Unincorporated	Medium
145	319749	PAINTED PEGASUS	Koch #1	In Progress	Adams	Unincorporated	Medium
146	320097	PAINTED PEGASUS	Kugel #1	Planned	Adams	Unincorporated	Medium
147	319653	PAINTED PEGASUS	Kunce #1-20	Planned	Adams	Unincorporated	Medium
148	319731	PAINTED PEGASUS	Larson #1-10	Planned	Adams	Unincorporated	Medium
149	320108	PAINTED PEGASUS	Larson #2-10	Planned	Adams	Unincorporated	Medium
150	319774	PAINTED PEGASUS	Linnebur #41-19 (2-61)	Planned	Adams	Unincorporated	Medium
151	320587	PAINTED PEGASUS	Mansfield USX #31-19	Planned	Adams	Unincorporated	Medium
152	320329	PAINTED PEGASUS	Martha #1	Planned	Adams	Unincorporated	Medium
153	320529	PAINTED PEGASUS	McKinney #1-9	Planned	Adams	Unincorporated	Medium
154	319994	PAINTED PEGASUS	Meyer #1-14	In Progress	Adams	Unincorporated	Medium
155	320000	PAINTED PEGASUS	Meyer #2-14	Planned	Adams	Unincorporated	Medium
156	320586	PAINTED PEGASUS	Minis-USX YM #3-14	Planned	Adams	Unincorporated	Medium
157	320233	PAINTED PEGASUS	Miyaca #1	Planned	Adams	Unincorporated	Medium
158	320136	PAINTED PEGASUS	Moorehead #41-19	Planned	Adams	Unincorporated	Medium
159	319771	PAINTED PEGASUS	Moran #1	Planned	Adams	Unincorporated	Medium
160	320551	PAINTED PEGASUS	Moran #31-30	Planned	Adams	Unincorporated	Medium
161	320327	PAINTED PEGASUS	Nies #6-1	Planned	Adams	Unincorporated	Medium
162	470931	PAINTED PEGASUS	Nile Field Central Tank	Planned	Adams	Unincorporated	Medium
163	319659	PAINTED PEGASUS	Packard #41-22	Planned	Adams	Unincorporated	Medium
164	320095	PAINTED PEGASUS	Penny #32-8	Planned	Adams	Unincorporated	Medium
165	319831	PAINTED PEGASUS	Piland #1	Planned	Adams	Unincorporated	Medium
166	319832	PAINTED PEGASUS	Piland #1-12	Planned	Adams	Unincorporated	Medium
167	320056	PAINTED PEGASUS	Piland #22-31	Planned	Adams	Unincorporated	Medium
168	319963	PAINTED PEGASUS	Piland #3	Planned	Adams	Unincorporated	Medium
169	319967	PAINTED PEGASUS	Piland #4	Planned	Adams	Unincorporated	Medium
170	320202	PAINTED PEGASUS	Porter-UPRR #2	Planned	Adams	Unincorporated	Medium
171	320249	PAINTED PEGASUS	Porter-UPRR #3	Planned	Adams	Unincorporated	Medium
172	319942	PAINTED PEGASUS	Prairie-Vetter #1-22	Planned	Adams	Unincorporated	Medium
173	319787	PAINTED PEGASUS	Putnam #41-18	Planned	Adams	Unincorporated	Medium
174	319664	PAINTED PEGASUS	Randall #32-10	Planned	Adams	Unincorporated	Medium
175	320024	PAINTED PEGASUS	Randall #41-10	Planned	Adams	Unincorporated	Medium
176	320554	PAINTED PEGASUS	Rose #13-14	Planned	Adams	Unincorporated	Medium
177	320566	PAINTED PEGASUS	Sam Koch #34-24	Planned	Adams	Unincorporated	Medium
178	320567	PAINTED PEGASUS	Sam Koch #44-24	Planned	Adams	Unincorporated	Medium
179	320037	PAINTED PEGASUS	Sandie #43-12	Planned	Adams	Unincorporated	Medium
180	320049	PAINTED PEGASUS	Shively #11-12	In Progress	Adams	Unincorporated	Medium
181	320055	PAINTED PEGASUS	Shively #21-12	In Progress	Adams	Unincorporated	Medium
182	319764	PAINTED PEGASUS	State #1-30	Planned	Adams	Unincorporated	Low
183	319775	PAINTED PEGASUS	State #14-32	Planned	Adams	Unincorporated	Medium
184	319901	PAINTED PEGASUS	State #2-30	Planned	Adams	Unincorporated	Medium
185	320325	PAINTED PEGASUS	State #3-30	Planned	Adams	Unincorporated	Medium
186	320045	PAINTED PEGASUS	State Horth #13-16	Planned	Adams	Unincorporated	Medium
187	320046	PAINTED PEGASUS	State Horth #22-16	Planned	Adams	Unincorporated	Medium
188	320096	PAINTED PEGASUS	Terri #14-4	Planned	Adams	Unincorporated	Medium
189	319941	PAINTED PEGASUS	Triple Six Ranch #1-22	Planned	Adams	Unincorporated	Medium
190	319975	PAINTED PEGASUS	Trupp #1-32	Planned	Adams	Unincorporated	Medium
191	319988	PAINTED PEGASUS	Trupp #2-32	Planned	Adams	Unincorporated	Medium

192	320349	PAINTED PEGASUS	UPRC-Ambush #41-27	Planned	Adams	Unincorporated	Medium
193	319843	PAINTED PEGASUS	UPRR 23 PAN AM A G	Planned	Adams	Unincorporated	Medium
194	319891	PAINTED PEGASUS	UPRR 23 PAN AM H	Planned	Adams	Unincorporated	Medium
195	319919	PAINTED PEGASUS	UPRR 23 PAN AM K	Planned	Adams	Unincorporated	Medium
196	319929	PAINTED PEGASUS	UPRR 23 PAN AM L	Planned	Adams	Unincorporated	Medium
197	319918	PAINTED PEGASUS	UPRR 24 PAN AM B	Planned	Adams	Unincorporated	Medium
198	319958	PAINTED PEGASUS	UPRR 24 PAN AM E	Planned	Adams	Unincorporated	Medium
199	319680	PAINTED PEGASUS	UPRR 60 PAN AM A	Planned	Adams	Unincorporated	Medium
200	320069	PAINTED PEGASUS	UPRR 60 PAN AM D	Planned	Adams	Unincorporated	Medium
201	320083	PAINTED PEGASUS	UPRR 60 PAN AM E	In Progress	Adams	Unincorporated	High
202	320099	PAINTED PEGASUS	UPRR 60 PAN AM I	Planned	Adams	Unincorporated	Medium
203	320085	PAINTED PEGASUS	UPRR 61S	In Progress	Adams	Unincorporated	Medium
204	320144	PAINTED PEGASUS	UPRR Bessie #1	In Progress	Adams	Unincorporated	Medium
205	319649	PAINTED PEGASUS	UPRR Linnebur #2-19	Planned	Adams	Unincorporated	Medium
206	319650	PAINTED PEGASUS	UPRR-Ehn #12-17	Planned	Adams	Unincorporated	Medium
207	319656	PAINTED PEGASUS	UPRR-Ehn #34-17	Planned	Adams	Unincorporated	Medium
208	319685	PAINTED PEGASUS	UPRR-Ehn #43-17	Planned	Adams	Unincorporated	Medium
209	320137	PAINTED PEGASUS	UPRR-Julie	Planned	Adams	Unincorporated	Medium
210	319648	PAINTED PEGASUS	UPRR-Sandlin-Ehn #1-17	Planned	Adams	Unincorporated	Medium
211	319652	PAINTED PEGASUS	UPRR-Sandlin-Ehn #2-17	Planned	Adams	Unincorporated	Medium
212	319668	PAINTED PEGASUS	UPRR-USX-AM #19-16	Planned	Adams	Unincorporated	Medium
213	319742	PAINTED PEGASUS	UPRR-Wailes #1-1	Planned	Adams	Unincorporated	Medium
214	320400	PAINTED PEGASUS	UPV #25	Planned	Adams	Unincorporated	Medium
215	320401	PAINTED PEGASUS	UPV #27	Planned	Adams	Unincorporated	Medium
216	320402	PAINTED PEGASUS	UPV #31	Planned	Adams	Unincorporated	Medium
217	320410	PAINTED PEGASUS	UPV #7	Planned	Adams	Unincorporated	Medium
218	320461	PAINTED PEGASUS	Vernon Grady #12-20	Planned	Adams	Unincorporated	Medium
219	320155	PAINTED PEGASUS	Vetter #12-2	Planned	Adams	Unincorporated	Medium
220	319700	PAINTED PEGASUS	Vetter #1-22	Planned	Adams	Unincorporated	Medium
221	319923	PAINTED PEGASUS	Vetter #12-32	Planned	Adams	Unincorporated	Medium
222	320169	PAINTED PEGASUS	Vetter #21-2	Planned	Adams	Unincorporated	Medium
223	320175	PAINTED PEGASUS	Vetter #31-2	Planned	Adams	Unincorporated	Medium
224	320416	PAINTED PEGASUS	Wagner #18-12	Planned	Adams	Unincorporated	Medium
225	320006	PAINTED PEGASUS	Wailes #41-33	Planned	Adams	Unincorporated	Medium
226	320082	PAINTED PEGASUS	Wanda #41-8	Planned	Adams	Unincorporated	Medium
227	320163	PAINTED PEGASUS	Warren #11-10	Planned	Adams	Unincorporated	Medium
228	320340	PETROSHARE	Ambush #23-22	In Progress	Adams	Unincorporated	Medium
229	320345	PETROSHARE	Ambush #24-22	Planned	Adams	Unincorporated	Medium
230	320346	PETROSHARE	Ambush #34-22	Planned	Adams	Unincorporated	Low
231	320360	PETROSHARE	Ambush #44-22	Planned	Adams	Unincorporated	Medium
232	320230	PETROSHARE	Amoco State #41-16	In Progress	Adams	Unincorporated	Low
233	320242	PETROSHARE	Amoco State #42-16	In Progress	Adams	Unincorporated	Low
234	320541	PETROSHARE	Amoco State #43-16	In Progress	Adams	Unincorporated	Low
235	424348	PETROSHARE	Amoco State Facility	Planned	Adams	Unincorporated	Medium
236	320427	PETROSHARE	Beisel #42-1	In Progress	Adams	Unincorporated	Medium
237	320052	PETROSHARE	Chapman #1	Planned	Adams	Unincorporated	Medium
238	320519	PETROSHARE	Chavez #7-17	In Progress	Adams	Unincorporated	Medium
239	320441	PETROSHARE	Danford-Champlin #14-8	In Progress	Adams	Unincorporated	Medium
240	320460	PETROSHARE	Ehler	Planned	Adams	Unincorporated	Medium

241	320253	PETROSHARE	Front Range #4	Planned	Adams	Thornton	Medium
242	319681	PETROSHARE	Guthrie Abner	Planned	Adams	Unincorporated	Medium
243	319733	PETROSHARE	Habel #1	Planned	Adams	Unincorporated	Medium
244	319740	PETROSHARE	Habel #39-1	In Progress	Adams	Unincorporated	Medium
245	320482	PETROSHARE	Habel #39-2	In Progress	Adams	Unincorporated	Low
246	320165	PETROSHARE	Marlatt #1	Planned	Adams	Unincorporated	Medium
247	320350	PETROSHARE	Marlatt #12-22	Planned	Adams	Unincorporated	Medium
248	320375	PETROSHARE	Marlatt #21-22	Planned	Adams	Unincorporated	Medium
249	470835	PETROSHARE	Mundell	Planned	Adams	Unincorporated	Low
250	320376	PETROSHARE	Mundell #23-15	Planned	Adams	Unincorporated	Medium
251	320388	PETROSHARE	Mundell #24-15	Planned	Adams	Unincorporated	Medium
252	320221	PETROSHARE	Otter #1	Planned	Adams	Unincorporated	Medium
253	320120	PETROSHARE	RMPCO-UPRR-Bradbury	Planned	Adams	Unincorporated	Low
254	320491	PETROSHARE	Sack #11-16	In Progress	Adams	Unincorporated	Low
255	320252	PETROSHARE	Stevens #34-15	Planned	Adams	Unincorporated	Medium
256	320485	PETROSHARE	Strekel #21-1	In Progress	Adams	Unincorporated	Medium
257	320483	PETROSHARE	Unruh #13-23	In Progress	Adams	Unincorporated	Low
258	320239	PETROSHARE	UPRR Antelope Farms #23-	Planned	Adams	Unincorporated	Medium
259	470846	PETROSHARE	UPRR Compton	Planned	Adams	Unincorporated	Low
260	320248	PETROSHARE	UPRR Compton #34-27	Planned	Adams	Unincorporated	Low
261	320220	PETROSHARE	UPRR Kalcevic	Planned	Adams	Unincorporated	Low
262	320214	PETROSHARE	UPRR Kalcevic #22-3	Planned	Adams	Unincorporated	Medium
263	320190	PETROSHARE	UPRR Kalcevic #33-3	Planned	Adams	Unincorporated	Medium
264	320203	PETROSHARE	UPRR Mundell #12-21	Planned	Adams	Unincorporated	Medium
265	320189	PETROSHARE	UPRR Wagner #12-19	Planned	Adams	Unincorporated	Medium
266	479190	PETROSHARE	UPRR Wagner Tank Battery	Planned	Adams	Unincorporated	Low
267	320199	PETROSHARE	UPRR Williams #44-27	Planned	Adams	Unincorporated	Medium
268	320212	PETROSHARE	UPRR-Hartnagle #14-35	In Progress	Adams	Unincorporated	Medium
269	477958	PETROSHARE	UPRR-Unruh	Planned	Adams	Unincorporated	Medium
270	320181	PETROSHARE	UPRR-Unruh #23-23	Planned	Adams	Unincorporated	Medium
271	320141	PETROSHARE	Wailes #1	In Progress	Adams	Unincorporated	Medium
272	320335	PETROSHARE	Wailes Farm #2-8	Planned	Adams	Unincorporated	Low
273	320187	PILAND RESOURCES	Piland #15-4	Planned	Adams	Unincorporated	Medium
274	320187	PILAND RESOURCES	Piland Production Facility	Planned	Adams	Unincorporated	Medium
275	375371	ROUNDS CO- DON M	Scholz	Planned	Adams	Unincorporated	Medium
276	319655	RUTH* ULA PEARL	Ruth #1	In Progress	Adams	Unincorporated	High
277	320210	SMITH OIL PROPERTIES	Lauridson #42-18	Planned	Adams	Unincorporated	Pending
278	320132	SMITH OIL PROPERTIES	Coan #1	Planned	Adams	Unincorporated	Pending
279	320195	SMITH OIL PROPERTIES	Lauridson #42-8	Planned	Adams	Unincorporated	Pending
280	320538	SMITH OIL PROPERTIES	Vicki #1	Planned	Adams	Unincorporated	Pending
281	320152	SMITH ENERGY CORP	Champlin 93 Amoco B #1	Planned	Adams	Unincorporated	Medium
282	320182	SMITH ENERGY CORP	Colorado State #16-11	Planned	Adams	Unincorporated	Medium
283	319943	SMITH ENERGY CORP	Robin Lynn #1	Planned	Adams	Unincorporated	Medium
284	319698	SMITH ENERGY CORP	State Walters #13-16	Planned	Adams	Unincorporated	Low
285	376264	STARLIGHT RESOURCES	North Quebec #4	Planned	Adams	Thornton	Medium
286	376893	STRATA PRODUCTION	Potty Brown #1	Planned	Adams	Unincorporated	Medium
287	375718	SUNDANCE OIL	UPRR Henry	In Progress	Adams	Unincorporated	Medium
288	320139	TEXAS TEA OF COLO	Adams County #1	In Progress	Adams	Unincorporated	Medium
289	320257	TEXAS TEA OF COLO	BIOW-Moore #3-1	In Progress	Adams	Unincorporated	Medium

290	320206	TEXAS TEA OF COLO	R C Nauman #4	In Progress	Adams	Unincorporated	High
291	320240	TEXAS TEA OF COLO	Rocky Mountain II #1	In Progress	Adams	Unincorporated	High
292	320140	TEXAS TEA OF COLO	Schmidt #1-B	In Progress	Adams	Unincorporated	Medium
293	320223	TEXAS TEA OF COLO	State of Colorado YB #3	In Progress	Adams	Unincorporated	High
294	454456	TEXAS TEA OF COLO	Van Scoyk #1	In Progress	Adams	Unincorporated	Medium
295	320129	TUDEX PETROLEUM	Croff #12-5	In Progress	Adams	Unincorporated	Medium
296	335737	TUDEX PETROLEUM	HI-Land #10-B/G	In Progress	Adams	Unincorporated	High
297	320217	TUDEX PETROLEUM	Lambert #2	In Progress	Adams	Unincorporated	High
298	457744	TUDEX PETROLEUM	Lambert #2 Tank Battery	In Progress	Adams	Unincorporated	Medium
299	320452	TUDEX PETROLEUM	Lenart #S-1	In Progress	Adams	Unincorporated	High
300	335733	TUDEX PETROLEUM	Reinholt #12-6	In Progress	Adams	Unincorporated	High
301	455407	TUDEX PETROLEUM	Tudex Hi-Land Tank	In Progress	Adams	Unincorporated	Medium
302	375579	WRIGHTS OIL & GAS	Derek #2	Planned	Adams	Unincorporated	Medium
1		COGCC / Unknown	Daniel, Theodore #1	COMPLETE	Adams	Thornton	COMPLETE
2		COGCC / Unknown	Derby Dome ERF #1	COMPLETE	Adams	Aurora	COMPLETE
3		COGCC / Unknown	Derby Dome ERF #2	COMPLETE	Adams	Aurora	COMPLETE
4		COGCC / Unknown	Derby Dome ERF #4	COMPLETE	Adams	Aurora	COMPLETE
5		COGCC / Unknown	Derby Dome ERF #5	COMPLETE	Adams	Aurora	COMPLETE
6		ENERGY SEARCH CO	Tsuzuki #4	COMPLETE	Adams	Thornton	COMPLETE
7		PETROSHARE	State of Colorado AB #1	COMPLETE	Adams	Unincorporated	COMPLETE
8		TUDEX PETROLEUM	Elms #12-4	COMPLETE	Adams	Unincorporated	COMPLETE
9		TUDEX PETROLEUM	Tudex Brink #S-2	COMPLETE	Adams	Unincorporated	COMPLETE