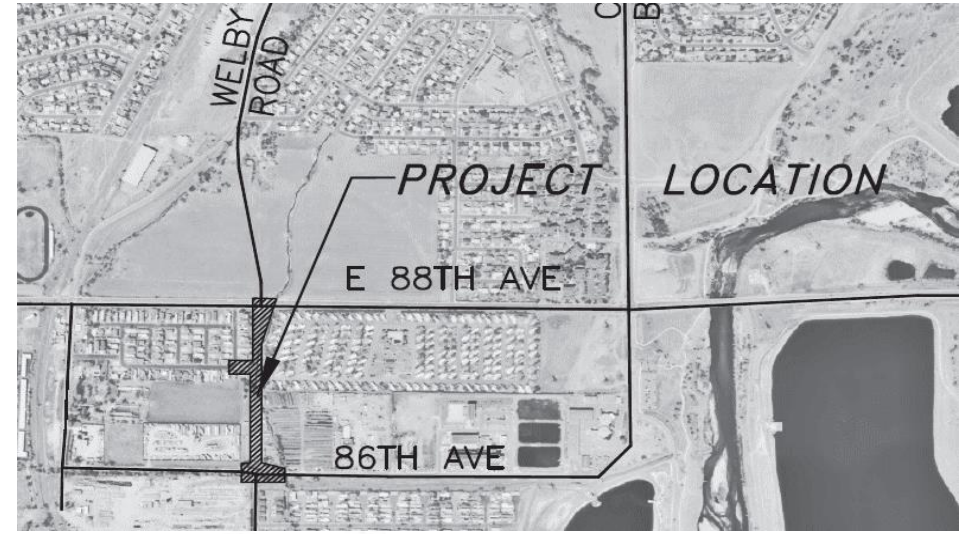


# ADAMS COUNTY PUBLIC WORKS

IMP2020-00008



# STEELE STREET EXTENSION

E 86TH AVENUE TO E 88TH AVENUE

Public Meeting #3





# PROJECT DESCRIPTION



New area roadways needed to compliment Regional Transportation District (RTD)'s Welby and 88th Station Park 'n' Ride and provide more direct access



The project extends Steele Street approximately 0.25 miles from East 86th Avenue to East 88th Avenue.



New Signed intersection at East 86th Avenue



Intersection enhancements at East 88th and New Steele Street to accommodate the new roadway and improve pedestrian crossings



Intersection modifications at Old Welby Road and East 88th Avenue to modify the existing signal and address pedestrian patterns (future).

# PROJECT GOALS

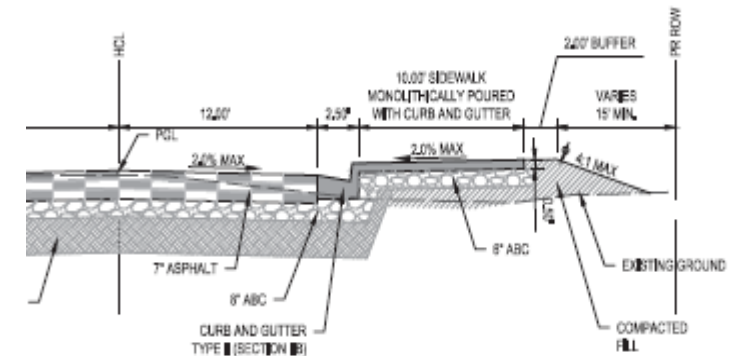
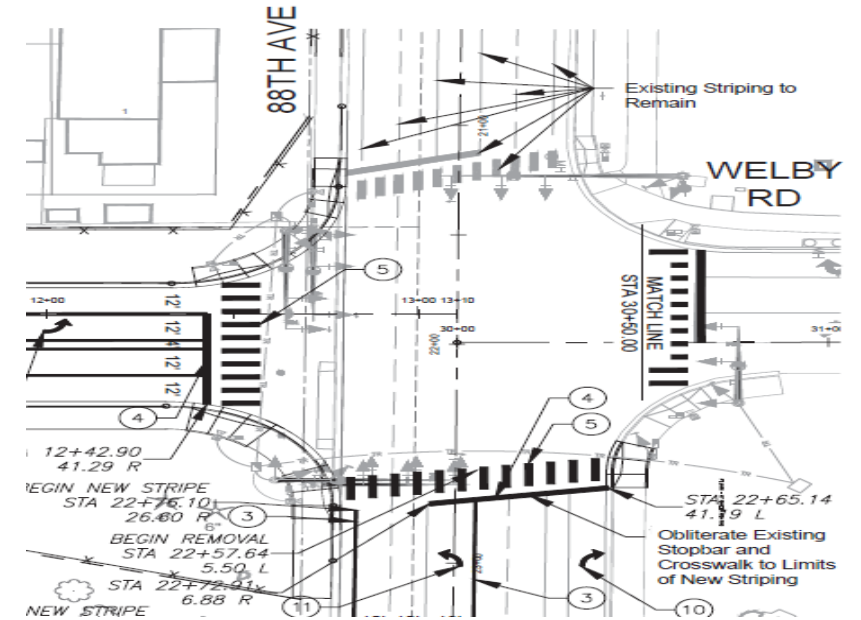
- Design for Pedestrian Safety
- Provide Stormwater Conveyance and Water Quality
- Improve Traffic Movements

# Pedestrian Safety

New Steele Street will include street lighting along the length of the corridor

Sidewalk along the entire east side of the alignment

Intersection striping modifications at Welby Road and East 88<sup>th</sup> and New Steele Street and East 88<sup>th</sup> to accommodate pedestrian movements



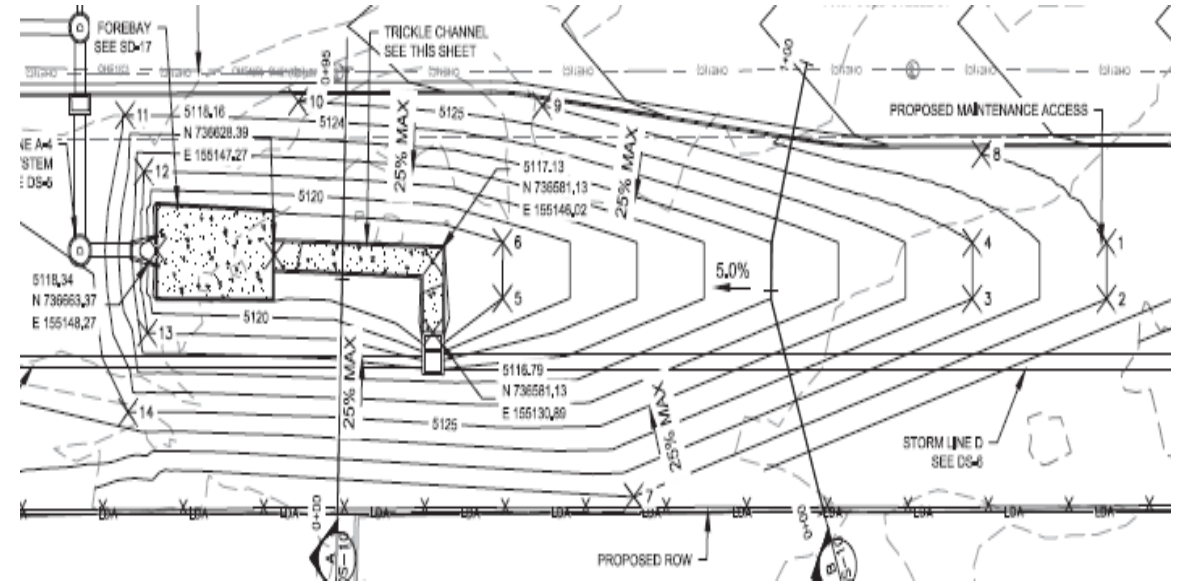
STEELE ST.  
STA 2+28.76 TO 3+40.72

# Stormwater Conveyance and Water Quality

Over 2600  
LF of  
Reinforced  
Concrete  
Pipe and  
Box  
Culvert

Over 35  
Drainage  
Structures  
including  
Inlets and  
Manholes

Water  
Quality  
Pond to  
Treat  
Storm  
Water



WATER QUALITY POND PLAN VIEW

# Improved Traffic Movements

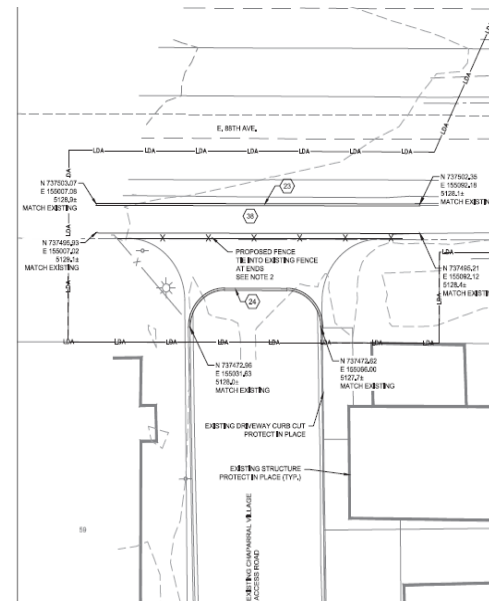
Relocation of New Chaparral Village Access to East Entrance onto Steele

Close North Access due to close proximity to new Intersection

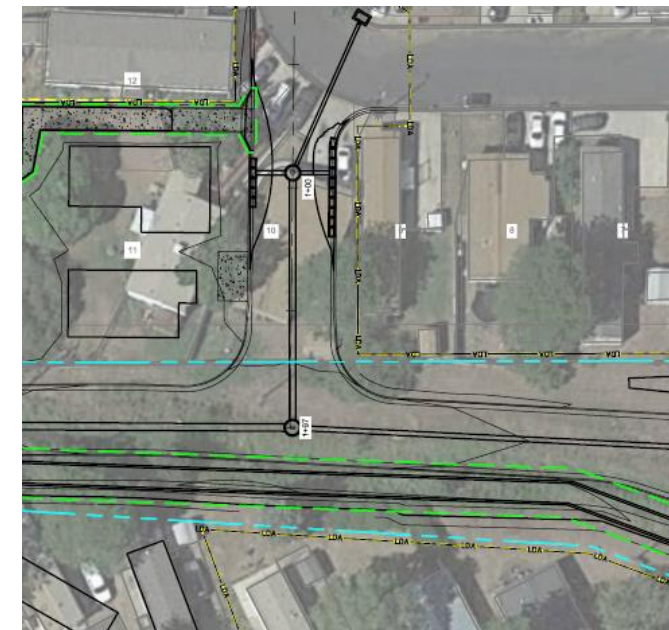
Current North Access



Closure of North Access



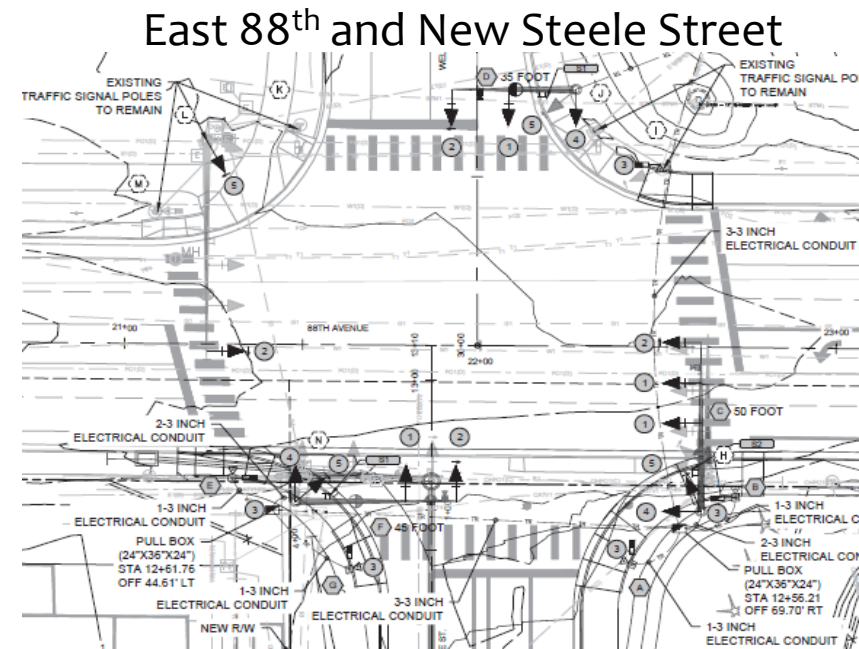
New East Access



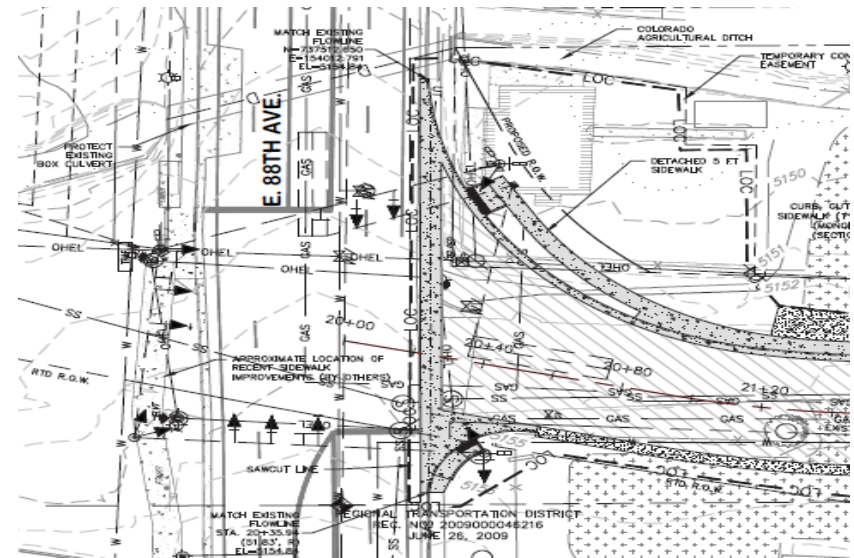
# Improved Traffic Movements

Intersection enhancements at East 88th and New Steele Street to accommodate the new roadway and improve pedestrian crossings

Intersection modifications at Old Welby Road and East 88th Avenue to modify the existing signal and address pedestrian patterns (future).



### Old Welby and East 88th Current Condition





# PROJECT CHALLENGES

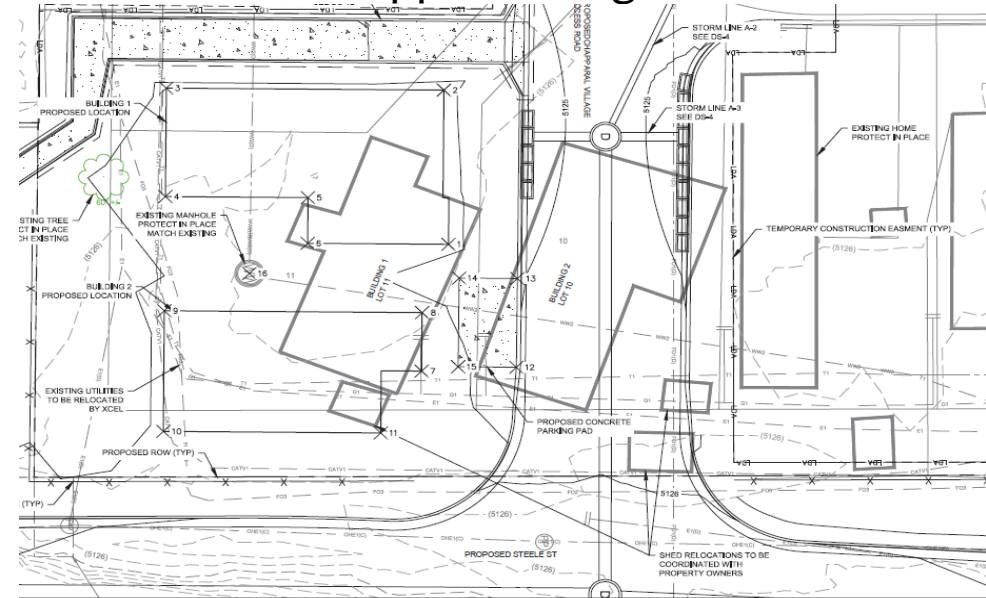
- Relocation of Residences to Accommodate The New Steele Street and Access
- Lower Clear Creek Canal
- Right of Way Acquisition
- Existing Utilities

# Relocation of Residences to Accommodate The New Roadway and Access

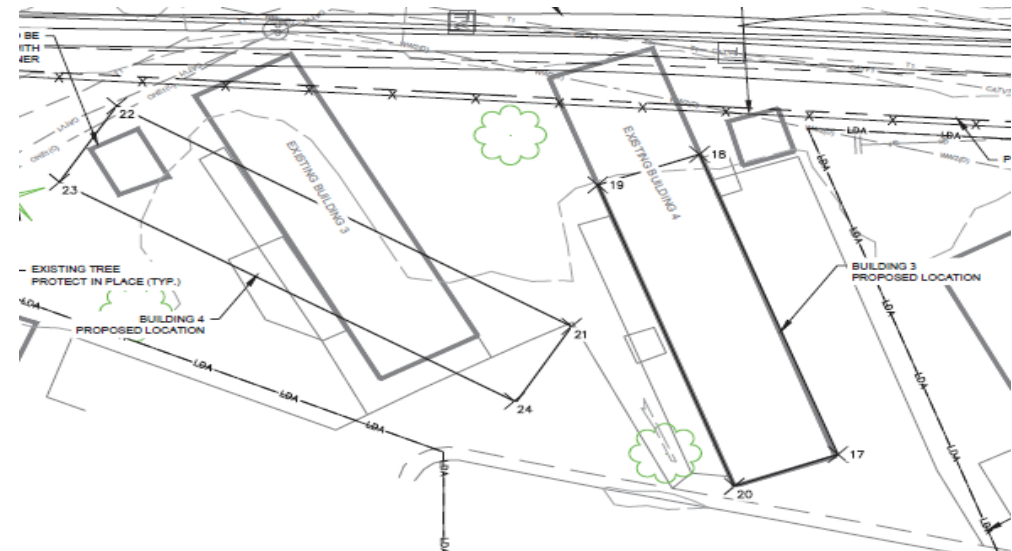
Each community has two (2) homes affected, requiring relocation

The new locations and orientation of the homes are shown to the right

## Chapparral Village Relocations



## Thornton Estate Relocations

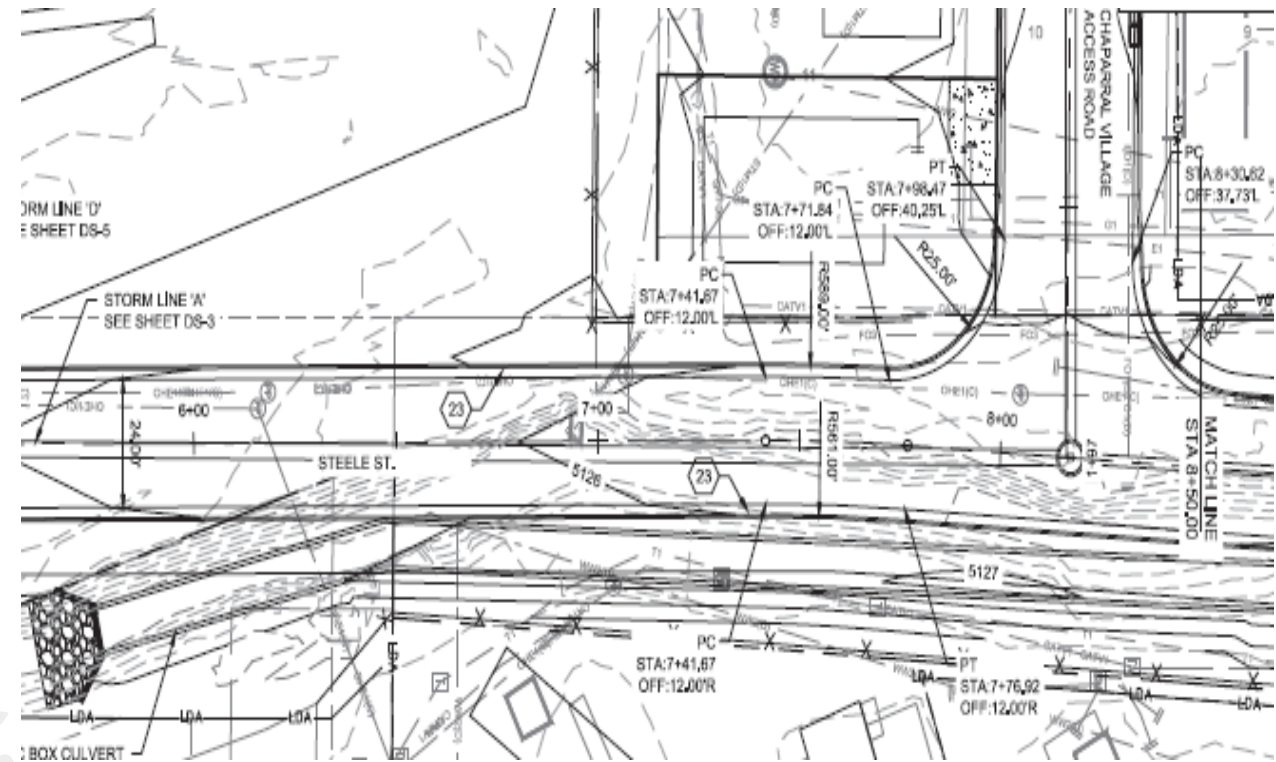


# Lower Clear Creek Canal

LCC Canal passes through the eastern portion of the alignment and there is no road to change the canal alignment

In the middle 1/3 of the project, LCC Canal had to be diverted into a precast box culvert to allow construction of the roadway

Lower Clear Creek Canal – Box Culvert



# Right of Way Acquisition

Additional Right of Way had to be acquired to allow the project to proceed

Right of Way and Easements acquired from three (3) separate property owners

