



# ADAMS COUNTY WASTE HAULER LISTENING SESSION

May 2023



---

Managing change  
in a resource-  
constrained world.



ORGANICS  
MANAGEMENT



WASTE  
RECOVERY



GLOBAL CORPORATE  
SUSTAINABILITY

since 1986

# TODAY'S AGENDA

ITEM	TIME	TIME
Welcome & Introductions	11:00 a.m.	:10
County Aims and Background	11:10 a.m.	:10
<u>Discussion:</u> Hauler Licensing Options - opportunities, considerations & challenges	11:20 a.m.	:40
<u>Discussion:</u> Waste Diversion Opportunities	12:00 p.m.	:15
<u>General Q&amp;A</u>	12:15 p.m.	:10
Meeting Closeout & Next Steps	12:25 p.m.	:05

# WELCOME AND INTRODUCTIONS

Please share:

- Name
- Company Name
- Role



# MEETING AIMS

- Share Adams County project aims and background
- Solicit input on potential hauler licensing ordinance elements
- Discuss additional opportunities, ideas, and challenges to increase waste diversion in Adams County



# ADAMS COUNTY PROJECT AIMS

# COUNTY AIMS AND BACKGROUND



- Front Range Waste Diversion (FRWD) grant for Waste Diversion Improvement Project
- Sustainable Adams County 2030 Plan
  - Supports Goal 5, Community Waste
- Waste diversion rate for unincorporated Adams County is unknown
- CDPHE goals for Front Range waste diversion:
  - 39% by 2026
  - 51% by 2036



# PROJECT AIMS

Adopt a hauler licensing ordinance that:

- Maintains open market for waste haulers
- Creates level playing field for all haulers
- Ensures community health and safety
- **Collects waste data and tracks diversion progress**
- **Provides equitable and expanded access to recycling**
- **Increases diversion and waste reduction**





# BACKGROUND RESEARCH



# RESEARCH FINDINGS

- 90+ waste haulers operating in unincorporated Adams County
- Estimated 121,000 tons of MSW generated (2021) in unincorporated Adams County
- Peer communities w/ hauler licensing:
  - 4 of 9 cities within or partially within Adams County already have hauler licensing (26% of Adams County population)
    - Arvada, Aurora, Federal Heights, Westminster
  - County peers include Boulder, Larimer, Pitkin, Summit, Broomfield, Denver
- Open market for multi-family and commercial
- No two hauler licensing ordinances are the same



# NOTABLE ORDINANCE ELEMENTS EMPLOYED BY PEERS

- Vehicle and container labeling requirements
- Vehicle inspections
- Establish designated collection days
- Waste data collection
- Elements to increase access and diversion rates (i.e. embedded rates, PAYT, others)



# DISCUSSION : ORDINANCE ELEMENTS

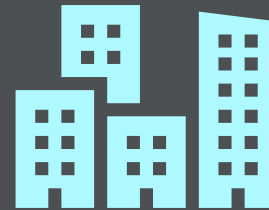
# ORDINANCE ELEMENTS DISCUSSION BY CATEGORY



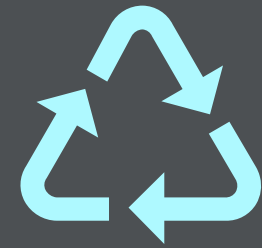
Basic  
Safety



Data  
Collection



Increased  
Access



Advancing  
Diversion

Discussion on each to identify opportunities,  
challenges, and other information



# BASICS: SAFETY AND LABELING

*Adams County intends to maintain an open market subscription system for waste haulers and ensure a level playing field for all haulers.*

- *Requirement for haulers to be properly insured*
- *Requirement for drivers to be properly licensed*
  - *Measures to reduce leaking and spillage*
  - *Collection vehicle labeling requirements*
- *Commercial container labeling requirements*
- *Enforcement and penalties for non-compliance*

Q1: Do any of these elements present a challenge to your company?

Q2: In addition to MSW, recycle, organics haulers, who else should be licensed?

Junk haulers, C&D roll offs, landscapers, others?

Q3: Are there additional items needed to ensure there is a level playing field in the County?



# DATA REPORTING

*Adams County intends to collect tonnage data from haulers to measure diversion and track progress.*

- Company profiles
  - Annual reporting, online, using Re-TRAC
- Includes residential and commercial MSW and may include other sectors and streams
  - Data is private and aggregated, no data on pricing or number of customers

Q1: What other sectors or streams?

Q2: What, if anything, makes it hard for you to report data?

Q3: How can the county make this as easy as possible for you to comply?



# INCREASE ACCESS TO RECYCLING

*Adams County would like for the hauler licensing ordinance to increase equitable access to recycling.*

## **We'd like your input on:**

Requiring haulers to offer recycling service to customers who receive trash service and informing customers of recycling service options

Q1: What challenges would your company face if the county were to include this in an ordinance?

Q2: Should it apply to all sectors (single-family residential, multi-family residential, commercial)?

Q3: What about all geographic areas of unincorporated Adams County (urban, rural, etc.)?

Q4: What do you consider equitable access?





# ADDITIONAL DIVERSION

*Adams County is interested in finding ways to support increased diversion to achieve the county's sustainability goals.*

## **We'd like your input on:**

- Requiring waste haulers to provide educational materials
- Recycling (and compost?) service costs embedded in trash collection fees
- Volume-based pricing / pay-as-you-throw

Q1: Given your experience working in Adams County, do any of these options make sense at this time, why or why not?

Q2: Are there other options for the licensing ordinance that you recommend the county consider?



# BRAINSTORMING

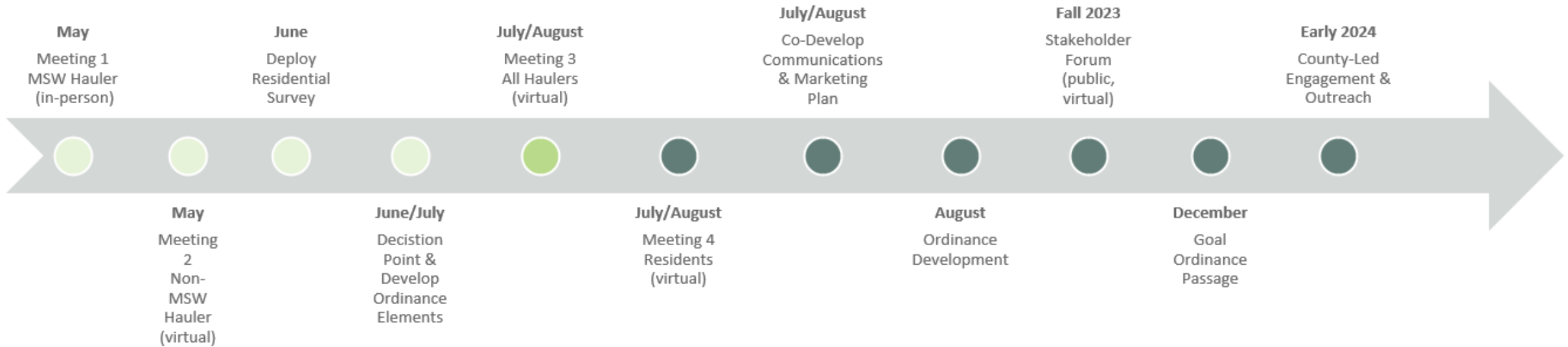
# OPEN - ENDED

What barriers stand in the way of increasing recycling and diversion in the region? Are these different in Adams County?

What else can Adams County do to increase waste diversion and advance the circular economy?



# NEXT STEPS



# QUESTIONS



?



TAY DUNKLEE

CONSULTANT

360.584.5132

[TDUNKLEE@RECYCLE.COM](mailto:TDUNKLEE@RECYCLE.COM)