

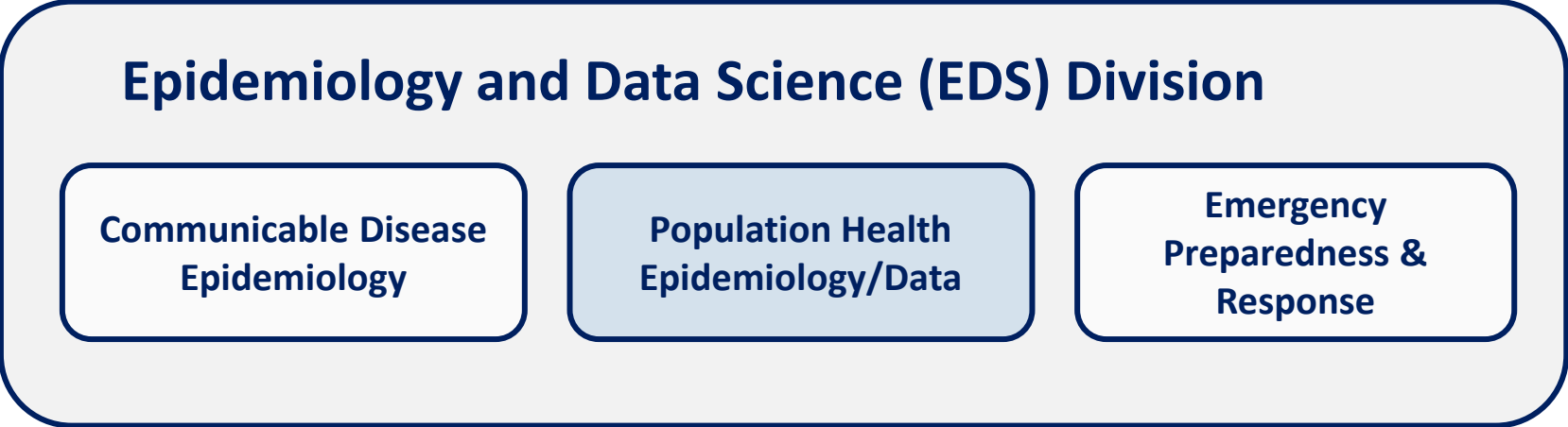
Epidemiology and Data Science Division
Population Health Epidemiology & Data
Program Overview



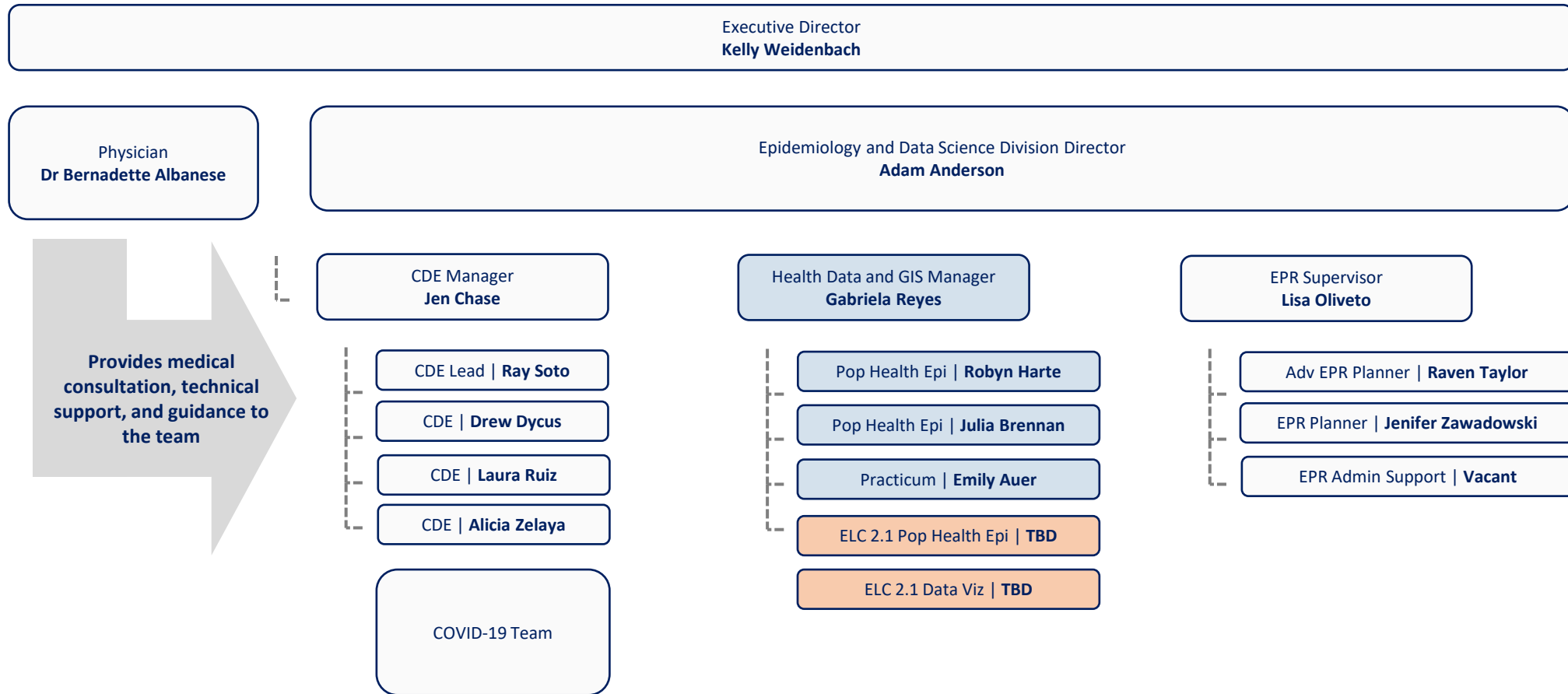
ADAMS COUNTY
HEALTH DEPARTMENT
— Your Health. Our Mission. —

Adams County Board of Health
August 17th 2023

Adams County Health Department Divisions:



Division Organization Chart:



Mission and Vision Statement:

Epidemiology and Data Science Division

Epidemiology and Data Science Vision Statement:

*The Epidemiology and Data Science Division at ACHD strives to eliminate disease and health disparities in Adams County through **Innovation, Collaboration, Inclusion***

The team will work toward this vision by working through the following goals:

**Build internal
communicable
disease
surveillance
system**

**Improve
community
involvement**

**Improve
communication of
data to a variety of
audiences**

**Reduce health
disparities**

**Integrated data
systems across
programs**

**Become a
nationally known
leader in our
programmatic
work**



Services Provided

Population Health
Epidemiology & Data
Program

- **Provide data and analytics to all Adams County Health Department programs and partners**
 - **Analysis/Statistics**
 - Health Data (Vital Records, Surveillance systems, hospitalization, disease reporting...)
 - Demographic (Census and ACS...)
 - Environmental (Oil & Gas, water wells, climate data, parcel/zoning...)
 - Septic records/permits
 - Facility Inspection (restaurants, pools, childcare...)
 - Community Data (liquor, tobacco, mj, firearm licensing, crime data...)
 - **Data Collection Tools**
 - Survey123
 - Smartsheet
 - **Data Visualizations**
 - **GIS Mapping**
 - **Web-based Mapping and Visualizations**
- **Support Program Evaluation**
- **Support Community Health Assessment**



ADAMS COUNTY
HEALTH DEPARTMENT

— Your Health. Our Mission. —

Services Provided

Population Health
Epidemiology & Data
Program



ADAMS COUNTY
HEALTH DEPARTMENT

— Your Health. Our Mission. —

- **IT Related Tasks**
 - **Administration of**
 - ArcGIS Server (4 Named users)
 - ArcGIS Online (21 named users)
 - Tableau Server (15 named users)
 - Tableau Public
 - FME Server (ETL and Data Automation) (5 named users)
 - Databases (MySQL, geodatabases..)
 - **Software**
 - ArcGIS
 - SAS/R
 - Tableau
 - FME
 - Smartsheet
 - Monday.com
 - Vizio
 - Adobe Creative Cloud

Goals

Population Health
Epidemiology & Data
Program

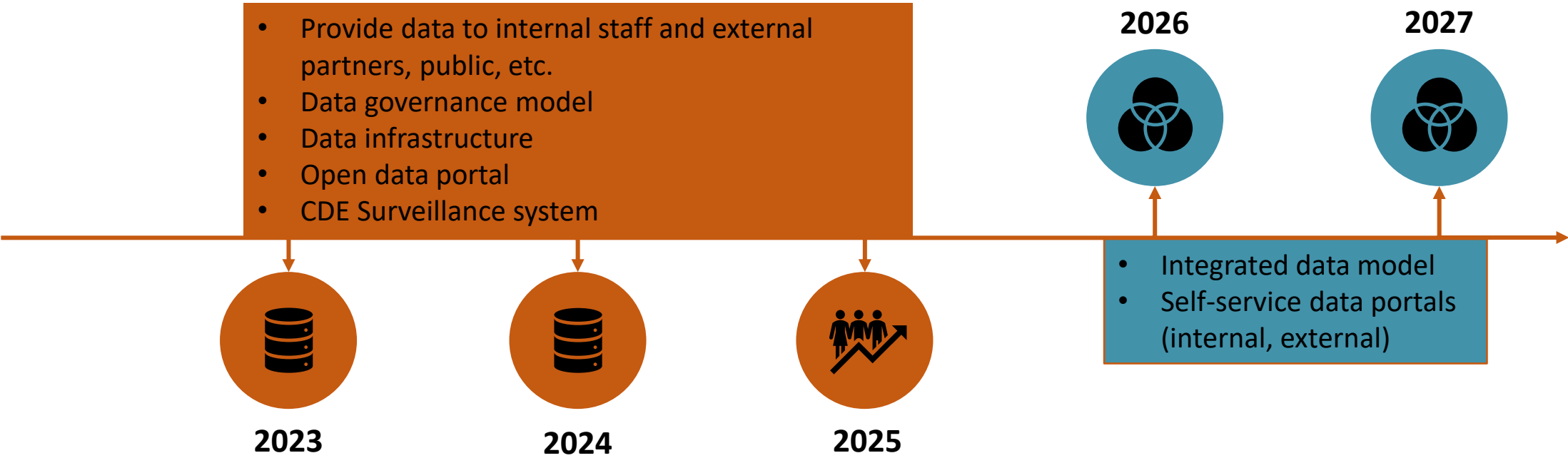
- **Identify areas where we are seeing health outcomes or behaviors that we need to address**
- **Describe characteristics of the communities experiencing those outcomes or behaviors**
 - **Majority of health outcomes and behaviors are driven by characteristics within the community**
 - Neighborhood & Built Environment
 - Economic Security
 - Social Inclusion
 - Healthcare Access
 - Food Access
 - Climate
 - Education
- **Understanding these characteristics is essential to address the needs of Adams County residents**



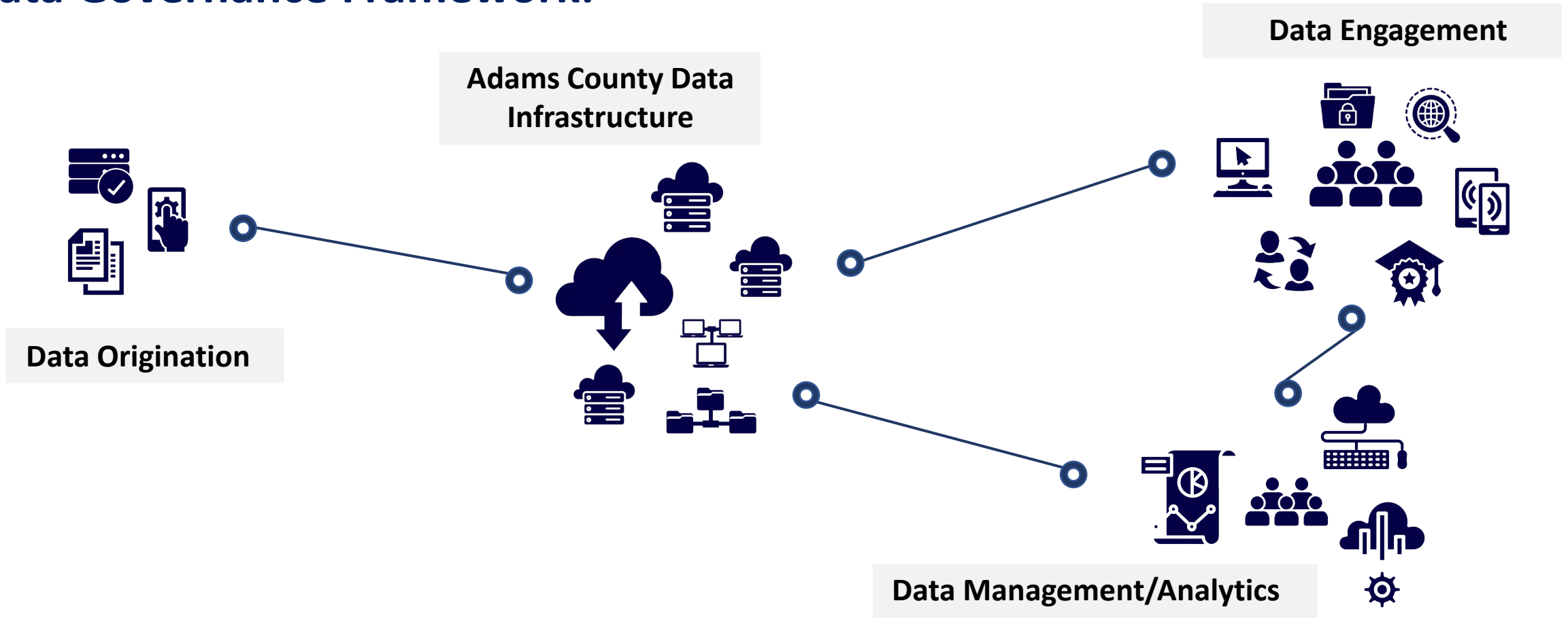
ADAMS COUNTY
HEALTH DEPARTMENT

— Your Health. Our Mission. —

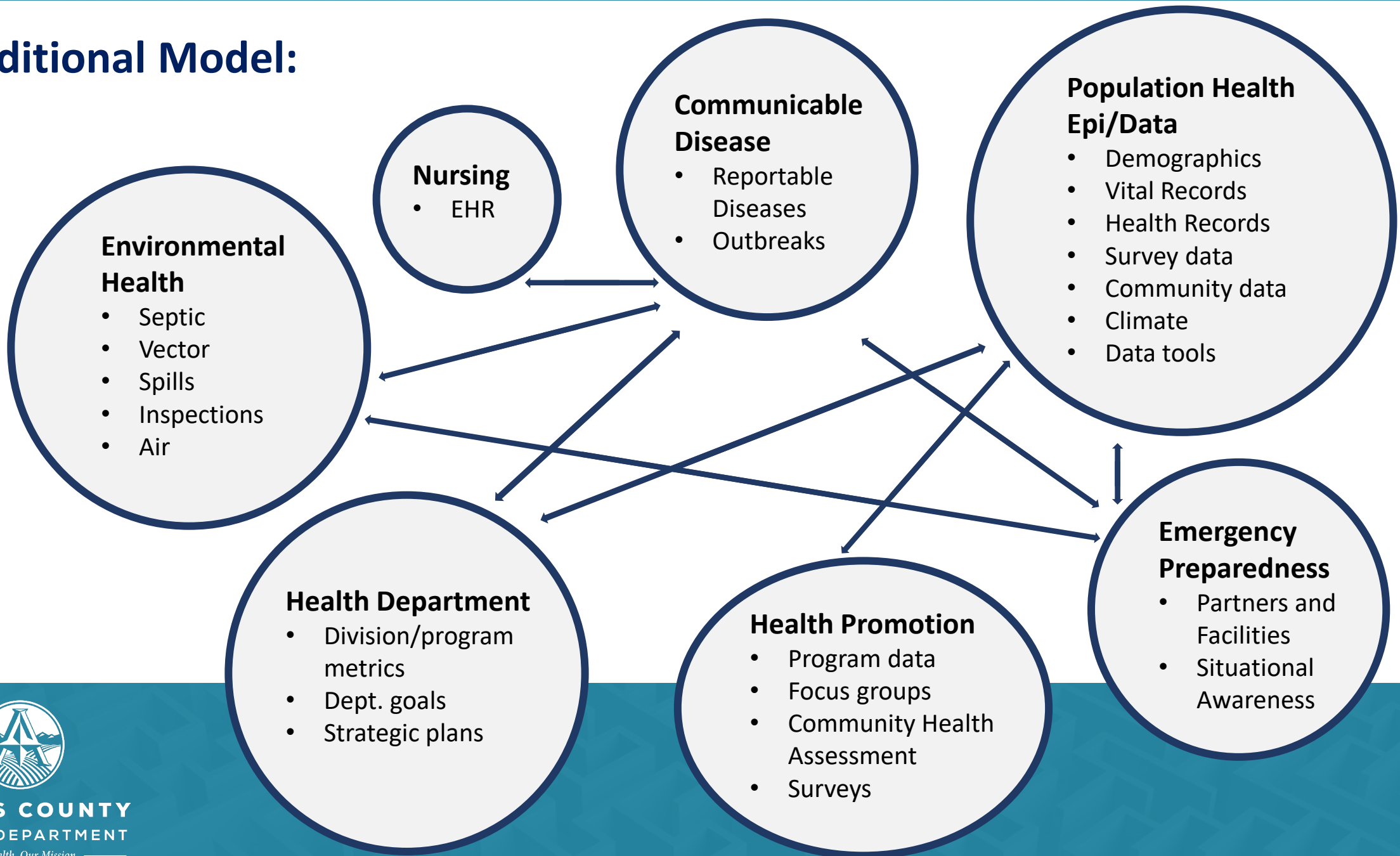
Timeline:



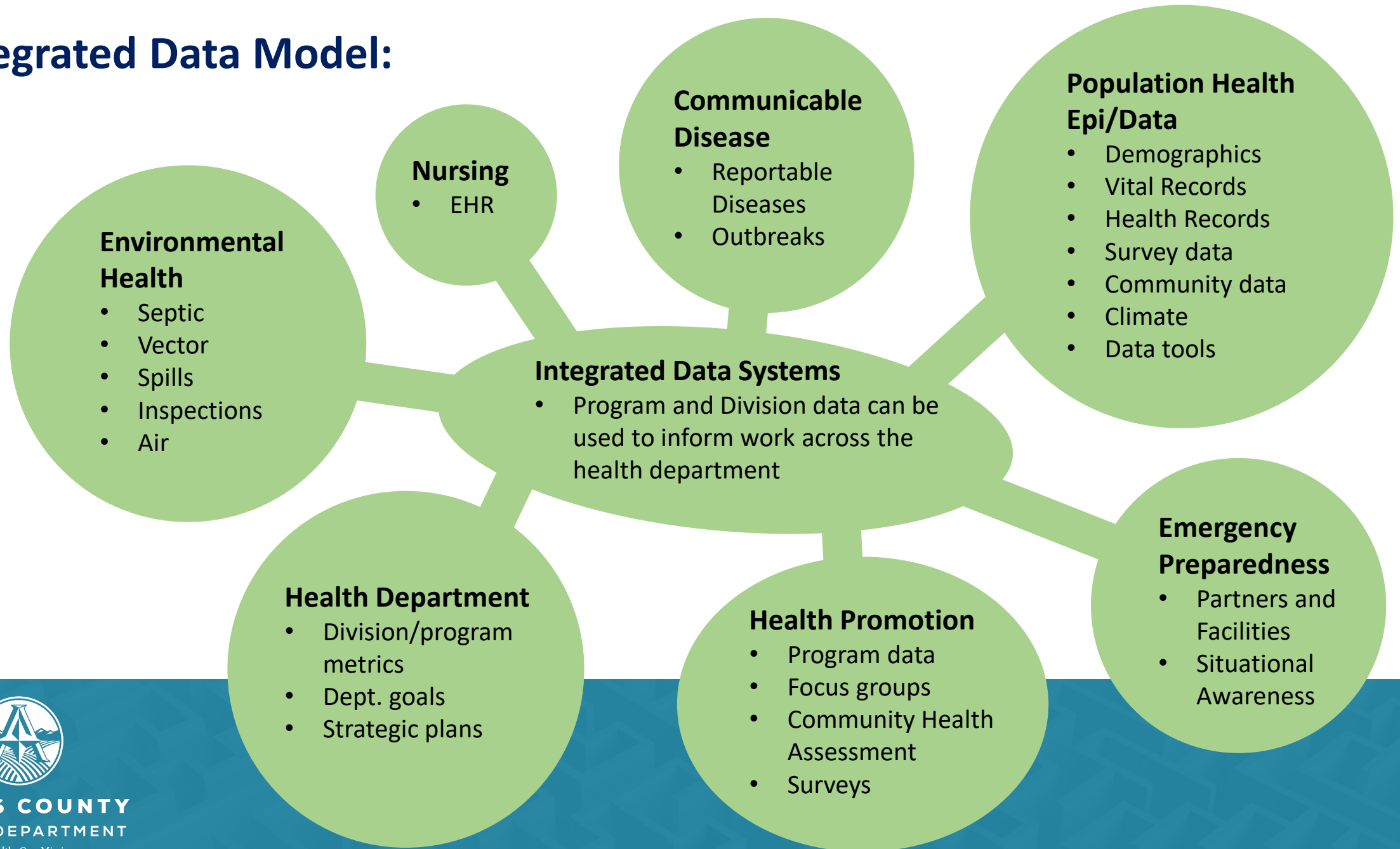
Data Governance Framework:



Traditional Model:



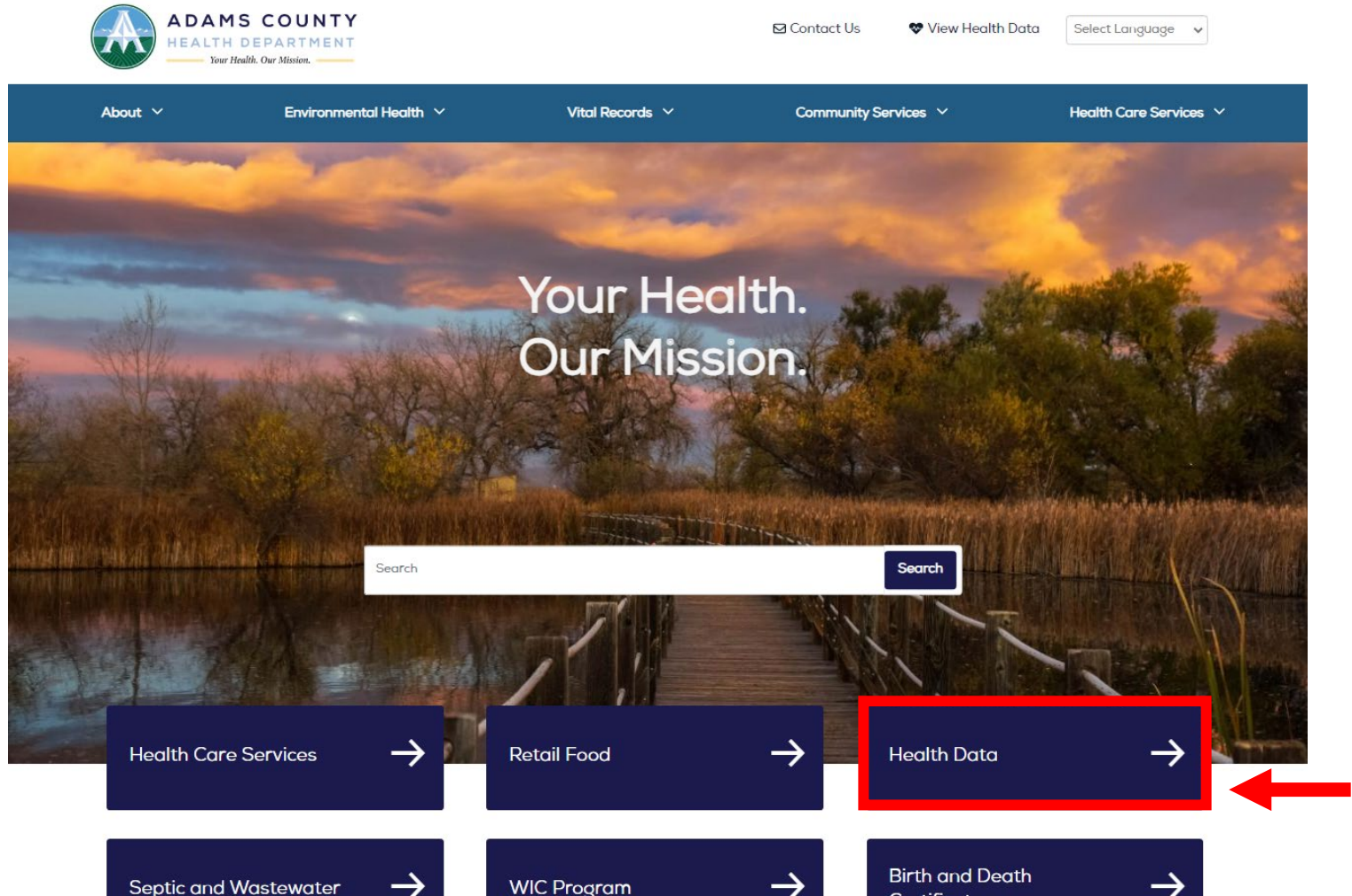
Integrated Data Model:



Data Site

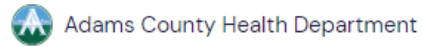
Population Health
Epidemiology & Data
Program

Click 'Health Data' from the ACHD website
<https://adamscountyhealthdepartment.org/>



Data Site

Section 1: Open Data Site



[Home](#) [Data Request Form](#) [ACHD Website](#) [Smartsheet Links](#) [Contact](#)

Health Data & GIS Resources

Adams County Health Department

Open Data

Access selected geospatial datasets published by Adams County Health Department below.

*Please note the open data site is still under development



Resources & Boundaries



Demographics



Environment



Health Behaviors



Health Outcomes

Need help?

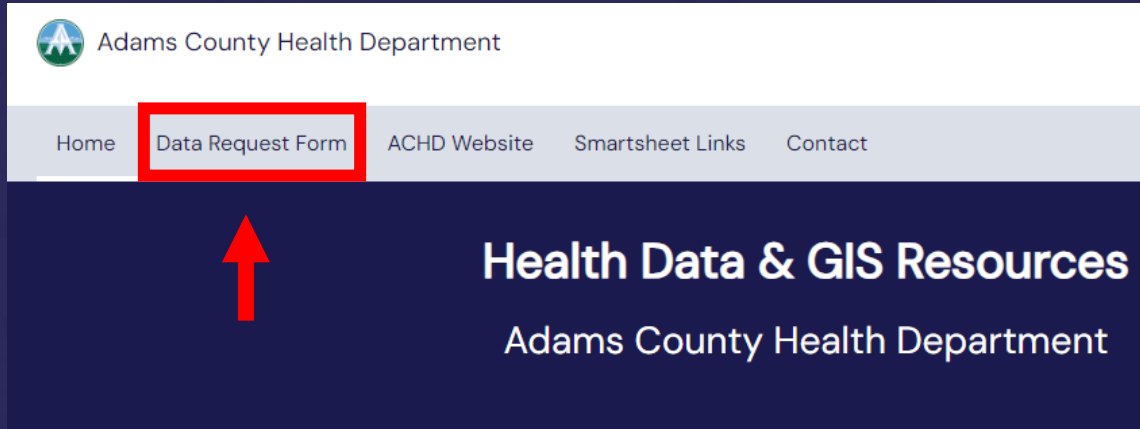
Please use the data request form link at the top of this page or click [here](#) to submit a data request for Adams County Health Department. A member of our team will reach out to you via email or phone within 3 business days. Please allow for 1-2 week turnarounds depending on project scale.



ADAMS COUNTY
HEALTH DEPARTMENT

— Your Health. Our Mission. —

Data Site



Adams County Health Department

Home **Data Request Form** ACHD Website Smartsheet Links Contact

Health Data & GIS Resources
Adams County Health Department

Data Request

Please submit your data request for Adams County Health Department below. A member of our team will reach out to you via email or phone. Thank you!

Affiliation:

Choose your affiliation: *

- I am a member of the public.
- I am a community partner.
- I work for Adams County Health Department.

Contact Information:

First Name *

Last Name *

Email *

Phone Number

Data Request Details:

Title of Request: *

Data Site

Section 1: Open Data Site



Resources & Boundaries

- Resources
- Adams County offices/clinics
 - Schools
 - Health Facilities
 - Hospitals
 - Military recruiting centers

- Boundaries
- Colorado/Adams County
 - Municipalities
 - Neighborhoods
 - Zip codes

- Districts
- Water/Sanitation
 - School
 - Animal Control
 - Fire protection



Demographics

- Demographics
- ACS 5yr 2021 county level
 - ACS 5yr 2021 census tract level
 - ACS 5yr 2021 neighborhood level
 - Population density census tract level



Environment

- Environment
- On-site waste water treatment
 - Restaurant/School/Pool inspections
 - Oil & Gas spill locations
 - Environmental Hazards (EPA)



Health Behaviors

- Health Behaviors
- BRFSS Health Behavior – community level estimates
 - HKCS 2021 data



Health Outcomes

- Health Outcomes
- BRFSS Health Outcomes – community level estimates
 - HKCS 2021 data
 - Vital Records
 - CHA
 - NVDRS



Section 2: Interactive Maps

Health Data Sites and Maps

The data sites and interactive maps below visualize topic-specific data and resources around important health topics for Adams County.

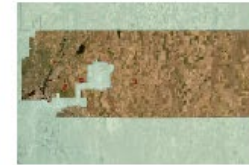
Interactive Maps



ACHD Resources & Boundaries
Updated: January 2023



Sociodemographics in Adams
County
Updated: February 2023



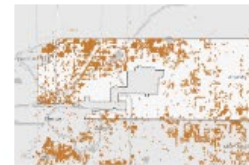
Historic Landfills
Updated: June 2022



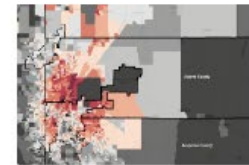
Rabies Positive Animals
Updated: February 2023



CDPHE Environmental Hazards
Updated: May 2023



ACHD On-Site Waste Water
Treatment Systems Search
Updated: Dec 2022



EPA Environmental Justice
Screening
Updated: June 2023



Interactive Map Example

ACHD Facilities - Updated December 2022 Adams County Health Department

Find address or place

Layer List

- Adams County Offices
 - Brighton
 - Commerce City
 - Denver
 - Westminster
- Adams County Clinics
- School Administration Offices
- Health Facilities (Updated by CDPHE 2022)
- Schools
- Military Recruiting
- Hospitals
- Metro Denver Neighborhoods

Adams County Offices Adams County Clinics School Administration Offices Schools Military Recruiting Hospitals Metro Denver Neighborhoods Municipal Boundaries Water and Sanitation Districts Military Boundaries Fire Protection Districts School Districts Colorado County Boundaries Adams County Boundaries

Options Filter by map extent Zoom to Clear selection Refresh

Address	City	State	ZIP	Phone	Services	Name
30 South 20th Ave, Suites F/G	Brighton	CO	80,601.00	303-659-2335	10 15	Brighton
4201 E 72nd Ave, Unit D	Commerce City	CO	80,022.00	303-288-6816	1 5 10 12 15	Commerce City
7000 North Broadway #400	Denver	CO	80,221.00	303-426-5232	6 7 10 15	North Broadway
1401 W 122nd Ave #200	Westminster	CO	80,234.00	303-452-9547	2 6 7 8 9 10 12 14 15	Westminster
4430 S Adams County Pkwy	Brighton	CO	80,601.00	303-220-9200		Government Center
8510 N Bryant Street	Westminster	CO	80,031.00	NA	NA	Potential Office Space
13199 E Montview Blvd	Aurora	CO	80,045.00	NA	NA	Potential Office Space



Interactive Map Example



On-Site Waste Water Treatment Systems Search

Adams County Health Department

Search for On-Site Waste Water Treatment Systems (OWTS) in Adams County, Colorado

Search by owner, address, or record ID

Record ID: ON0020435

Description

Septic - New Permit

Status

Permit - Issued/Approved Completed

Site Address:

2008 E 141st Ave Brighton 80,602 CO

Application Date:

September 10, 2002 - Active, Billable

Parcel #:

157323010002_

County:

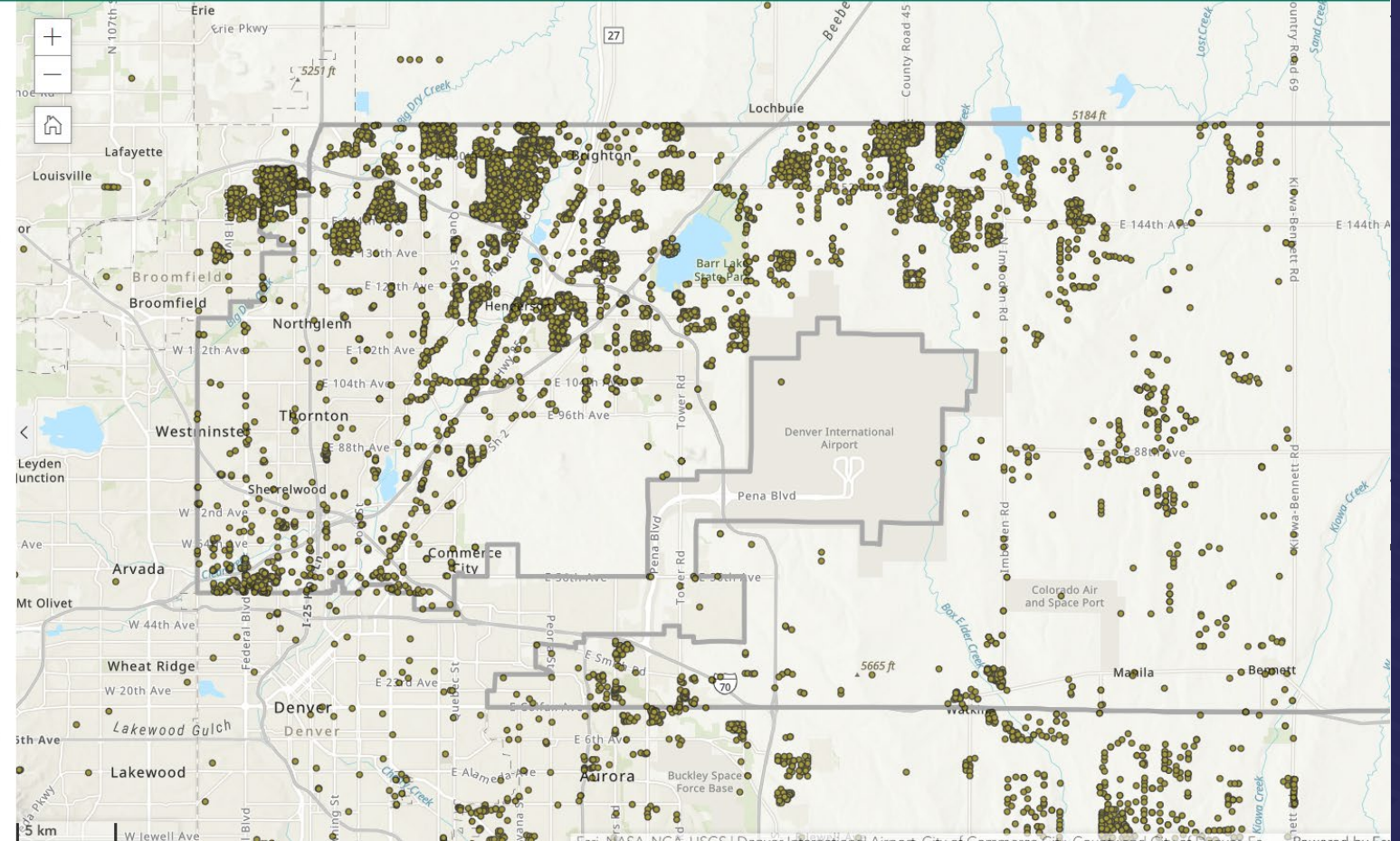
Adams

Owner:

Howard Doughman
10481 Pennsylvania Street
Northglenn CO 80233

Lot Type and Size:

Single Family - 267




**ADAMS COUNTY
HEALTH DEPARTMENT**

Your Health. Our Mission.


Data Site

Section 3: Health Data Sites and Reports

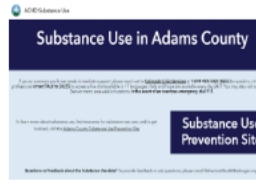
Health Data Sites



Healthy Aging in Adams County
Updated: March 2023



Mental Health in Adams County
Updated: April 2023




Substance Use in Adams County
Updated: April 2023

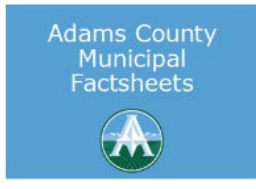
Health Data Reports



Adams County Health Factsheet
Updated: January 2023



Adams County Community Health Assessment
Updated: May 2022



Adams County Municipal Factsheets
Updated: August 2023



Health Site Example

ACHD Mental Health

Mental Health in Adams County

If you or someone you know is in need of immediate support, please reach out to [Colorado Crisis Services](#) at 1-844-493-TALK (8255) to speak to a trained professional or text "TALK" to 38255 to access a live chat available in 17 languages. Help and hope are available everyday 24/7. You may also visit one of their Denver metro area [walk-in locations](#).

To learn more about mental health, find resources for mental health care, and to get involved, visit the [Adams County Mental Health Resource Hub](#).

Mental Health Promotion Site

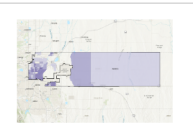
Questions or Feedback about the Mental Health data? To provide feedback or ask questions, please email BehavioralHealth@adcogov.org.

Introduction

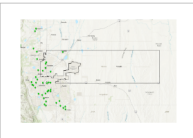
At Adams County Health Department, mental health and suicide prevention are a priority and we are working to achieve the overarching outcome of a mentally healthy, suicide-free community where individuals have a feeling of hope for their future, a sense of purpose and meaning in their lives, and feel they belong in their families, communities, and culture.

Mental Health Data and Resource Web Maps

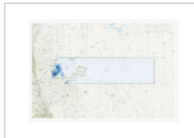
Data provides some insights on the health outcomes that need to be addressed to improve mental health and prevent suicide. The web maps below help to identify data and resources surrounding issues involving mental health.



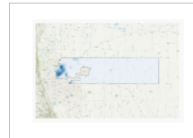
Poor Mental Health and Depression in Adams County
Updated: March 2023



Colorado Mental Health Facilities
Updated: March 2023



Suicide Mortality in Adams County, 2016-2021
Updated: March 2023



Substance Use Mortality in Adams County, 2016-2021
Updated: March 2023

Mental Health & Access to Care in Adams County

Sources: Colorado Health Access Survey and Healthy Kids Colorado Survey

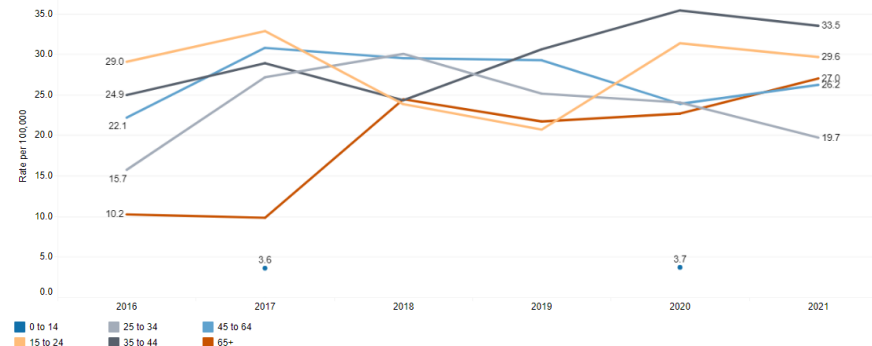
As a result of COVID-19, 37% of Adams County residents reported a decline in mental health.

Suicide Mortality Rates by Age Group, 2016-2021

Source: [Colorado Department of Public Health and Environment Vital Statistics Program](#)

Note: Data from CDPHE Vital Statistics Program with 0-3 events are not displayed and marked with an asterisk (*) for confidentiality.

Suicide Mortality Rates (per 100k population) by Age Group in Adams County, Colorado, 2016 - 2021



Year	0 to 14	15 to 24	25 to 34	35 to 44	45 to 64	65+
2016	15.7	10.2	22.1	24.9	29.0	29.0
2017	3.6	10.0	27.0	28.0	32.0	32.0
2018			24.0	24.0	29.0	29.0
2019			21.0	25.0	29.0	29.0
2020	3.7	23.0	23.0	23.0	31.0	35.0
2021		26.0	26.0	26.0	29.6	33.5

Circumstances, Toxicology, and Injury Locations of Suicides

The [Colorado Suicide Data Dashboard](#) is an interactive data tool using data from the Colorado Violent Death Reporting System (CVDRS) to examine suicide deaths in Colorado residents. This tool is designed to help inform suicide prevention efforts at any level and allows you to look at specific counties and regions of interest.

Click [here](#) to view the full Colorado Suicide Data Dashboard.
Click [here](#) to view the Colorado Suicide Data Dashboard Guide (documentation).

ADAMS COUNTY HEALTH DEPARTMENT
Suicide Health Our Mission

Adams County Suicides 2016-2020: Circumstances, Toxicology, and Injury Location
Colorado Violent Death Reporting System
Source: Vital Statistics, Colorado Department of Public Health & Environment

Filter dashboard by State or County:

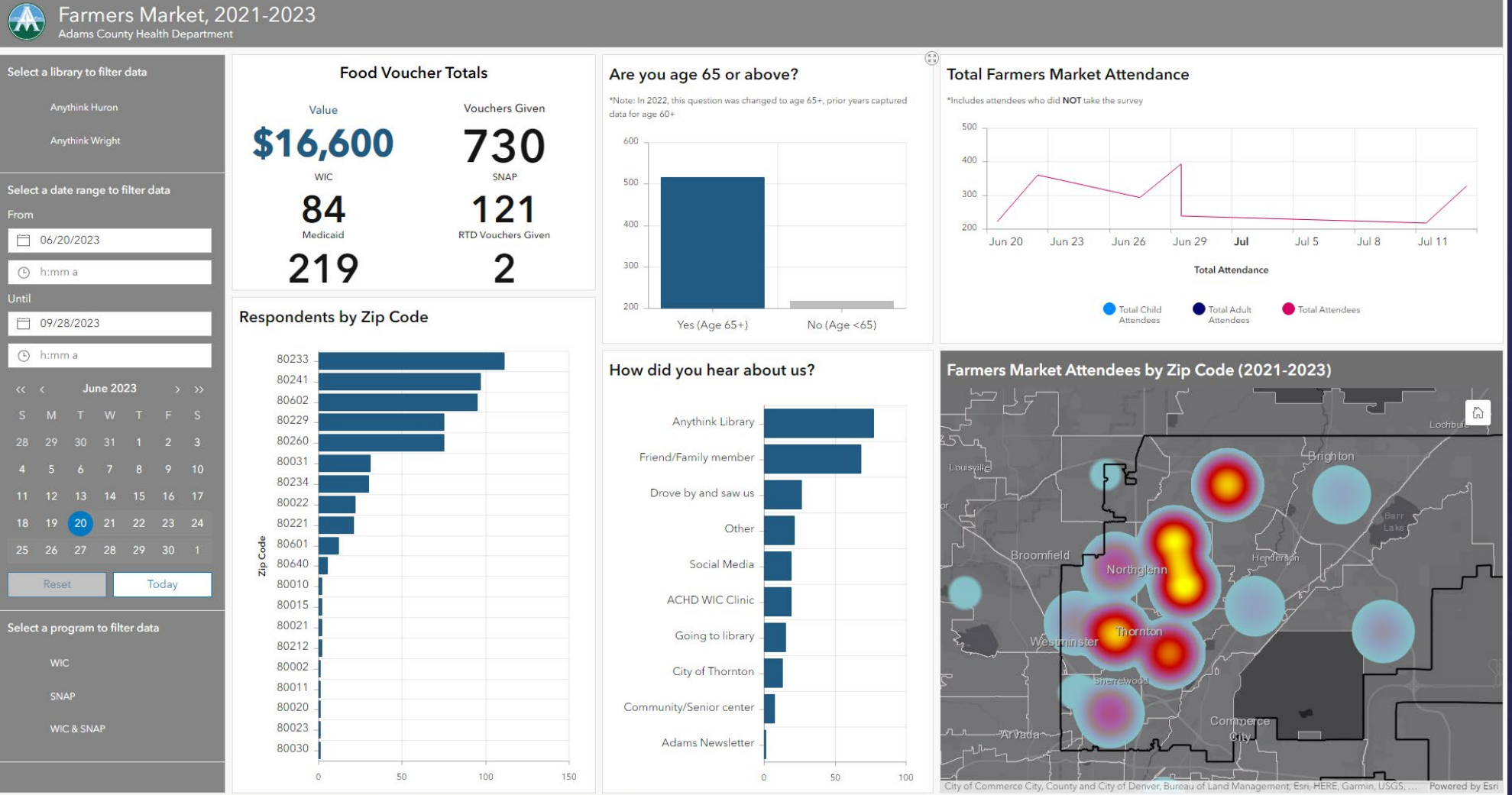
Total Suicides in Colorado (2016-2020):		Total Suicides in Adams (2016-2020):	
Colorado	6,094	Adams	517

Circumstances		Toxicology	
Colorado	Adams:	Colorado	Adams:
Known	5,928	Known	513
Unknown	166	Unknown	4
Available	4,890	Available	495
Unavailable	1,205	Unavailable	22

History of suicidal thoughts or plans	61.8%	Alcohol Present	43.0%
Current depressed mood	56.5%	Marijuana present	22.2%
Crisis two weeks prior to death	53.2%	Opiates present	14.7%
Ever treated for mental health problem	51.5%	Unknown	10.6%



Dashboard Example



Report Example

Adams County, Colorado: A Health Update from Adams County Health Department

Updated: January 2023

What is a Healthy Community?

"Public Health is what we do together as a society to ensure the conditions in which everyone can be healthy." During our 2022 Community Health Assessment, our community members, partners, and staff said that social connections, opportunities, health and wellness services, neighborhood conditions, and safety influence the health of our communities. We can build community health by supporting diversity and social acceptance, encouraging growth and development opportunities for everyone, ensuring the availability of affordable and accessible services, and working together to make our communities safe, great places to live.



Adams County Quick Facts

Population*	552,515	Median Household Income**	\$81,258
White Non-Hispanic*	48.1%	No High School Education**	16%
Hispanic*	41.6%	Families Below Poverty**	7.1%
African-American*	3.3%	Unemployment***	3.8%
Asian*	4.2%	Median Rent (monthly)**	\$1,581
Median Age**	34.8		

*Source: Colorado Department of Local Affairs, July 2021 Estimates, released Aug 2022
 **Source: American Community Survey 2021 (Dec 2022 release)
 ***Source: Bureau of Labor Statistics, Nov 2022

Prevalence of Adult Health Risk Issues

Poor Mental Health	14.1%	Current Marijuana Use	19.2%
No Physical Activity	22.4%	Current Smoking	14.7%
Obesity	30.2%	Current Vaping	7.3%
Binge Drinking	17.9%		

Source: BRFSS 2020 Places, except vaping from 2018 - 2020 on COVID

Prevalence of Youth Health Risk Issues

Poor Mental Health	40.7%	Binge Drinking	12.0%
Considered Suicide	16.9%	Current Marijuana Use	13.4%
No Physical Activity	57.1%	Current Smoking	3.0%
Overweight/Obesity	26.5%	Current Vaping	17.7%
Electronically Bullied	8.2%	3+ hrs Daily Screen Time	76.5%

Source: Healthy Kids Colorado Survey 2021, except overweight/obesity from 2019

ACHD welcomes any additional data requests and interpretation for this and any other public health related topic. For more information Contact: Adam Anderson | atanderson@adco.gov | (720) 339-8150

Leading Causes of Death (2021)

Cause of Death (all ages)	Rate
1. Cancers	151.8
2. Heart Disease	142.3
3. COVID-19	106.7
4. Unintentional Injuries	86.9
5. Chronic Lower Respiratory Diseases	48.0
6. Stroke	46.1
7. Alzheimer's Disease	38.2
8. Chronic Liver Disease/Cirrhosis	30.8
9. Suicide	22.0
10. Diabetes Mellitus	21.8

• Injury by Firearm: 18.1
 • Drug-Induced Deaths: 45.4
 • Alcohol-Induced Deaths: 33.8

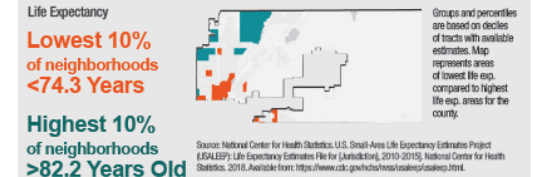
Cause of Death (Age 65+)	Rate
1. Cancers	820
2. Heart Disease	730
3. COVID-19	510

Ranked on Age-Adjusted Mortality Rates /100,000
 Source: Colorado Department of Public Health and Environment, Vital Records Program 2021

Adams County, Colorado Trends in Key Health Issues

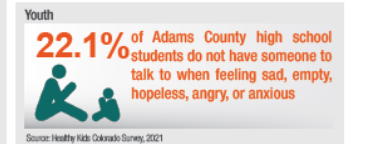
LIFE EXPECTANCY

People living just a few blocks apart may have vastly different opportunities to live a long life in part because of their neighborhood. Unfortunately, significant gaps in life expectancy at birth persist across Adams County and its neighborhoods. The latest estimates of life expectancy at birth reveal significant differences by neighborhood.



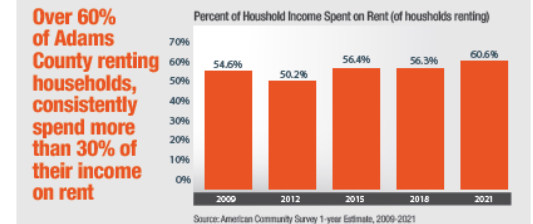
MENTAL HEALTH

Positive mental health and social connections allow people to realize their full potential, cope with the stresses of life, work productively, and make meaningful contributions to their communities. Mental health includes emotional, psychological, and social well-being, and is important at every stage of life. Suicide also remains an important issue and is the 8th leading cause of death in Adams County.



HOUSING: COST OF LIVING

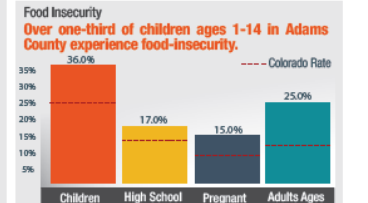
A standard first promoted by the United States National Housing Act of 1937, still in use today, is that households should not spend more than 30% of their income on rent or a mortgage so enough money remains to cover non-housing-related needs.



Between 2011 and 2021, median monthly rent increased 68.4% and median annual household income increased 55.3%

FOOD INSECURITY

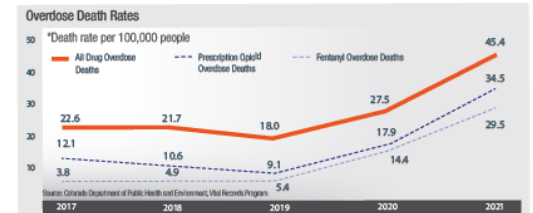
In a healthy community, all residents can access safe, healthy, and culturally appropriate food and are able to practice good eating habits. In Adams County, many people experience food insecurity, or the limited or uncertain availability of nutritionally adequate and safe foods.



*Child Health Survey, Colorado Department of Public Health and Environment, 2016-2017; **Healthy Kids Colorado Survey, 2017; ***Pregnancy Risk Assessment Monitoring System, Colorado Department of Public Health and Environment, 2016; ****Behavioral Risk Factor Surveillance System, Colorado Department of Public Health and Environment, 2018

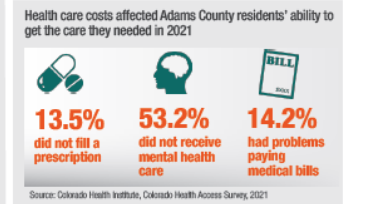
SUBSTANCE ABUSE: OVERDOSE DEATHS

Drug overdose deaths are rising in Colorado, including in Adams County. Between 2017 and 2021, death rates from all drug overdoses doubled. Between 2017 and 2021, death rates associated with prescription opioid overdoses tripled. Between 2017 and 2021, death rates associated with Fentanyl overdoses increased by 9x.



COST OF HEALTH CARE

All people in Adams County need to have a regular, culturally competent primary care provider; be able to quickly connect to needed mental, physical health, and substance use services; and know how to access and navigate the health care system to meet their needs.



Report Example

Findings of Mass Shootings and Related Firearm Data

United States and Colorado | June 2022

Purpose

Recent mass shootings have again focused attention on the United States as an outlier in gun violence among more developed countries.^{1,2} They have also encouraged discourse on prevention. While we focus on mass shootings in this brief, as German Lopez reminds us in his May 26, 2022 New York Times article, "Most shootings in America never appear in national headlines. The majority of gun deaths in 2021 were suicides. Nearly half were homicides that occurred outside mass shootings; they are more typical acts of violence on streets and in homes (and most involve handguns). Mass shootings were responsible for less than 2 percent of last year's gun deaths."² Mass shootings are, however, what typically drive public response and dialogue. Despite personal and political beliefs about guns and gun access, most Americans agree that the now common mass murders of school children, grocery shoppers, and everyday workers have crossed a line. They are too much. They are too horrible.

Mass shootings are a specific type of violent crime, often with characteristics different from other violent crimes. In order to better understand mass shootings and the factors related to them, this brief explores available national and state data related to mass shootings. Data in this brief include the type and legal status of guns used in U.S. mass shootings, guns traced and recovered in Colorado crimes, gun sales, offender characteristics and motivation, and firearm policy and regulation.

We hope this brief, which only skims the surface, provides useful information for people interested in learning about mass shootings from a public health perspective, summarizing and synthesizing information that will support continued, thoughtful, and useful discourse and action.



¹Grinshteyn, E., & Hemenway, D. (2016). Violent Death Rates: The US Compared with Other High-income OECD Countries, 2010. *The American Journal of Medicine*, 129(3), 266–273. <https://doi.org/10.1016/j.amjmed.2016.10.026>
²<https://www.nytimes.com/2022/06/26/briefing/guns-america-shooting-deaths.html>

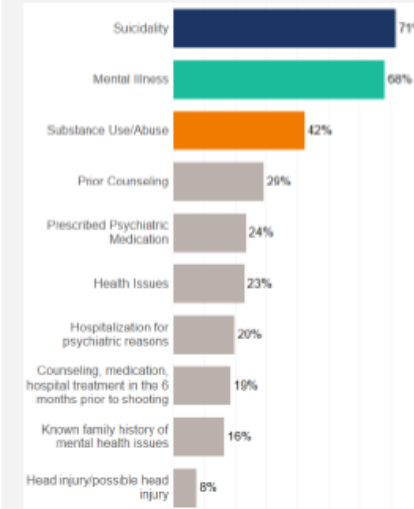


Promote, protect and improve the lifelong health of individuals and communities in Adams, Arapahoe and Douglas Counties through the effective use of data, evidence-based prevention strategies, leadership, advocacy, partnerships, and the promotion of health equity.

Offender Mental Health

Some data exist that explore offender mental health. Most offenders experience the desire to commit suicide at some point before or after a mass shooting event. In fact, 68% are considered to have a mental illness, with a quarter of offenders experiencing thought and/or mood disorders. Nearly half of all offenders used or abused substances, with alcohol being the most common substance used or abused.

Figure 9: Percent of Offenders Mental Health prior to event, 1966-2022



Source: The Violence Project's Mass Shooter Database, www.theviolenceproject.org (1966-2022)

71% of offenders experienced suicidality

- 32% experienced suicidality prior to the event
- 40% had no prior suicidality, but had an intent to die in the event

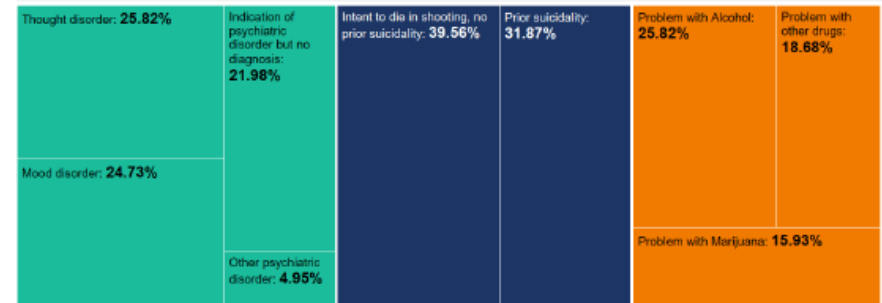
68% of offenders had a mental illness

- 26% had a thought disorder
- 25% had a mood disorder
- 22% had indication of psychiatric disorder, but no diagnosis
- 5% had other psychiatric disorder

42% of offenders used or abused substances

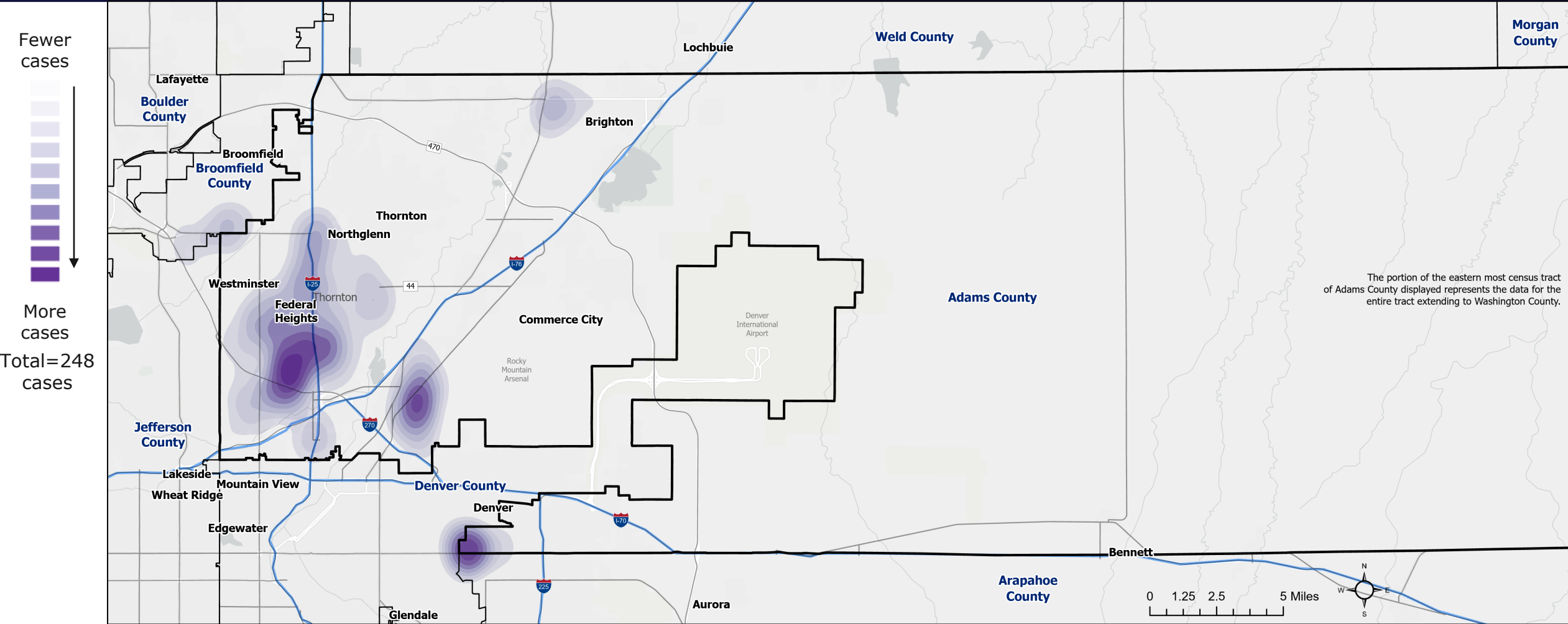
- 26% had a problem with alcohol
- 19% had a problem with other drugs
- 16% had a problem with marijuana

Figure 10: Percent of Offenders most common Mental Health Indicators, 1966-2022



Source: The Violence Project's Mass Shooter Database, www.theviolenceproject.org (1966-2022)

Firearm-Related Cases Filed between 07/01/2022 - 09/30/2022

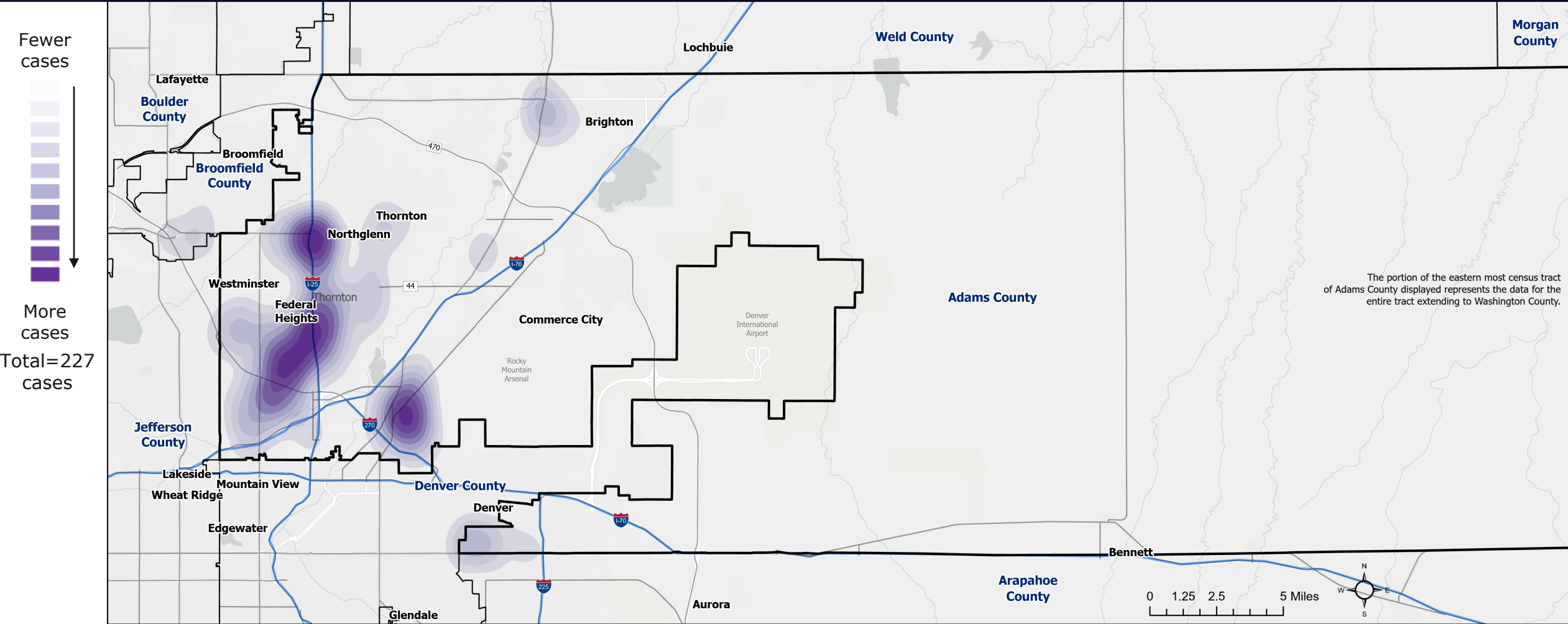


This map shows the geographic areas with the highest density of Firearm-related cases filed between July 1, 2022 to September 30, 2022. There were **248 Firearm-related cases filed** with offense dates ranging from 5/27/2013 to 9/28/2022. Cases filed may have more than one charge associated with the case, but this map only displays deduplicated cases, regardless of the number of charges.

Source: 17th Judicial District Attorney's Office, 2022



Firearm-Related Cases Filed between 10/01/2022 - 12/31/2022



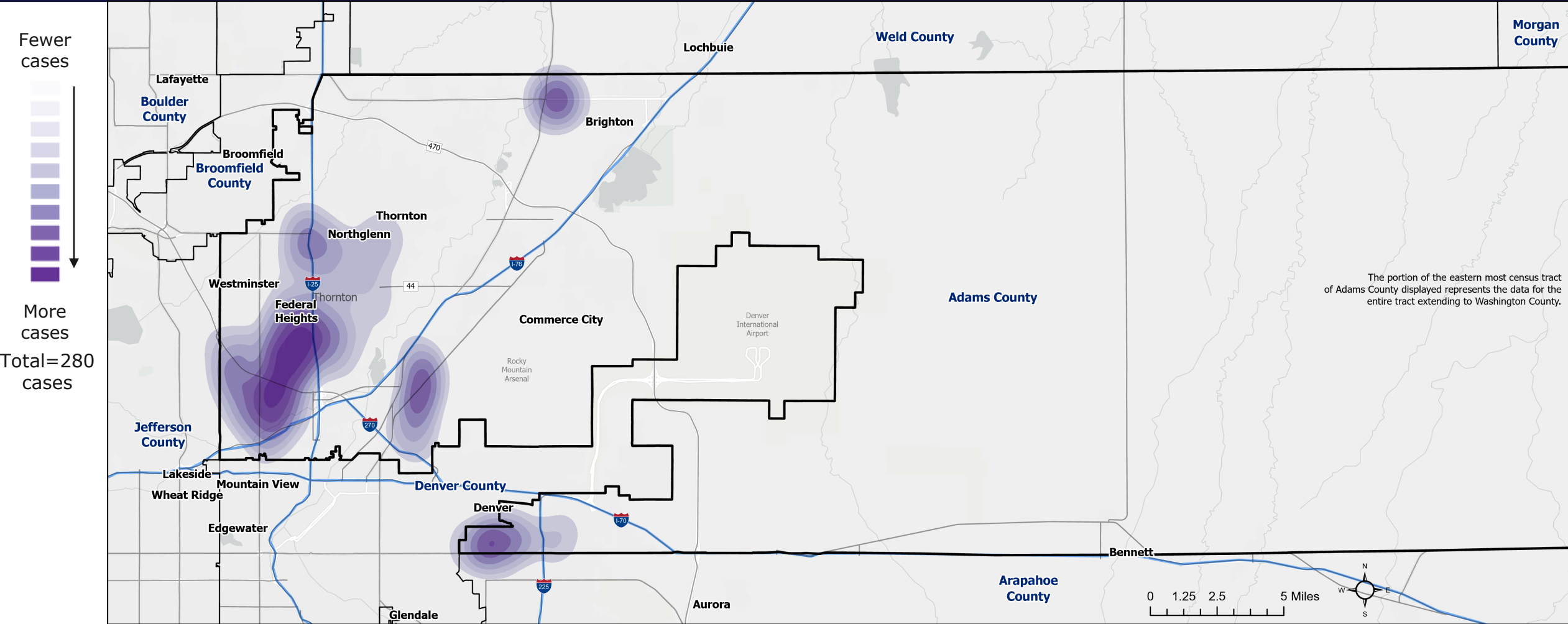
The portion of the eastern most census tract of Adams County displayed represents the data for the entire tract extending to Washington County.

This map shows the geographic areas with the highest density of Firearm-related cases filed between October 1, 2022 to December 31, 2022. There were **227 Firearm-related cases filed** with offense dates ranging from 4/10/2021 to 12/26/2022. Cases filed may have more than one charge associated with the case, but this map only displays deduplicated cases, regardless of the number of charges.

Source: 17th Judicial District Attorney's Office, 2022



Firearm-Related Cases Filed between 01/01/2023 - 03/31/2023



This map shows the geographic areas with the highest density of Firearm-related cases filed between January 1, 2023 to March 31, 2023. There were **280 Firearm-related cases filed** with offense dates ranging from 12/20/2020 to 3/28/2023. Cases filed may have more than one charge associated with the case, but this map only displays deduplicated cases, regardless of the number of charges.

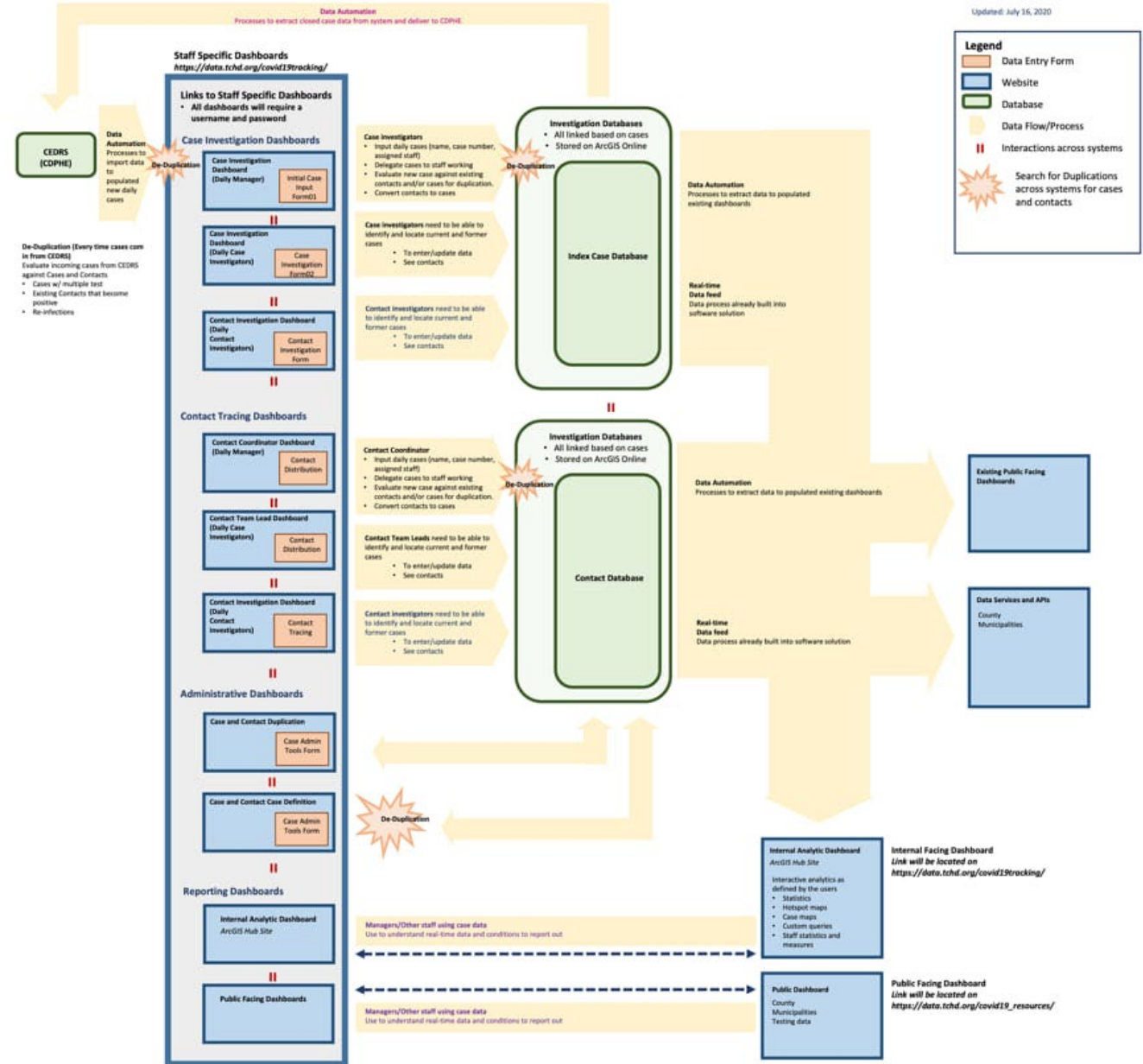
Source: 17th Judicial District Attorney's Office, 2022



COVID19 Case Investigation Main Dashboard

Using ESRI ArcGIS Online

CDE Surveillance System Example



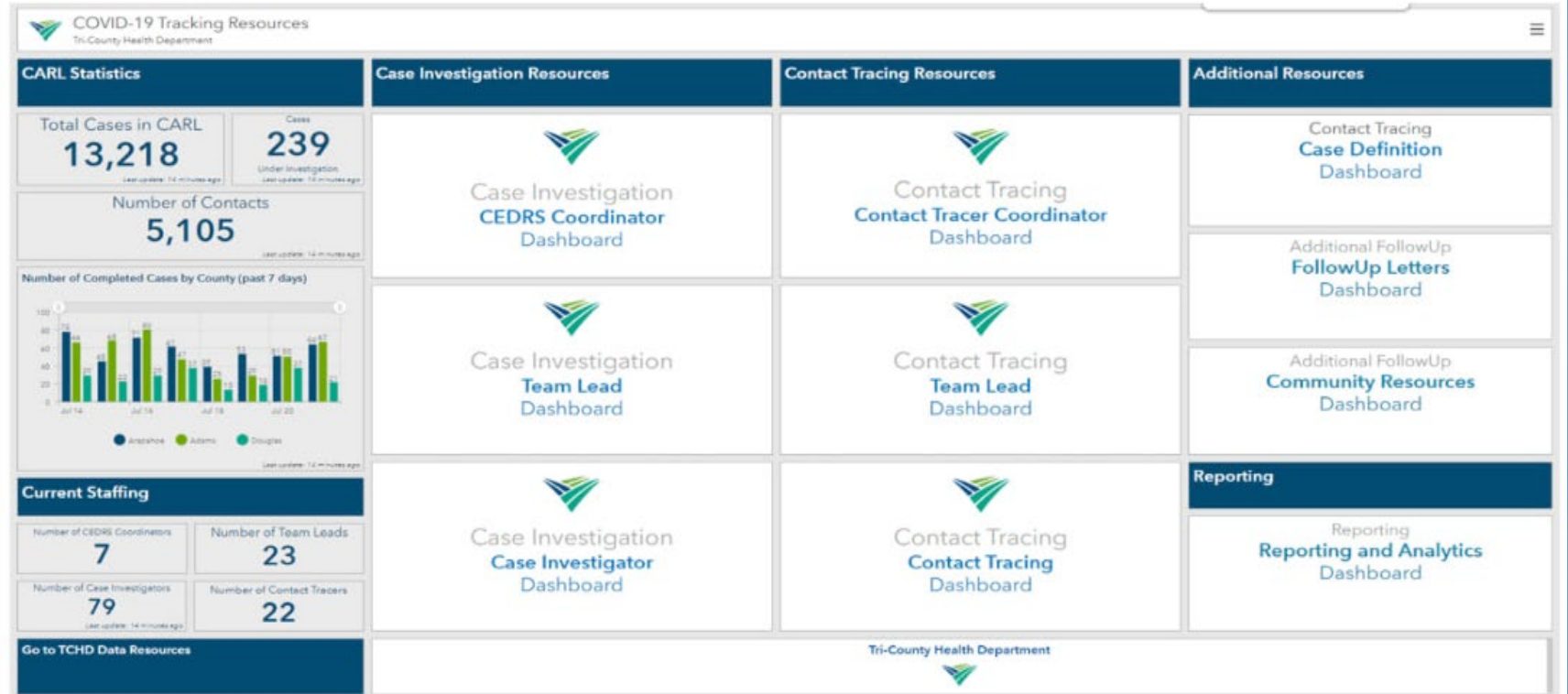
ADAMS COUNTY
HEALTH DEPARTMENT

Your Health. Our Mission.

CDE Surveillance System Example

COVID19 Case Investigation Main Dashboard

Using ESRI ArcGIS Online Dashboards



Real-time general statistics from CARL

Case investigation workflow dashboards

Contact tracing workflow dashboards

Case investigation follow-up dashboards



ADAMS COUNTY
HEALTH DEPARTMENT

Your Health. Our Mission.

CDE Surveillance System Example

COVID19 Case Importing Process Using FME Workbench

The screenshot displays the FME Workbench interface with a workflow for importing COVID-19 cases. The workflow is a complex network of blue and yellow nodes connected by lines. Annotations with blue arrows point to specific parts of the workflow:

- Import cases from State reportable disease database**: Points to the initial data source nodes.
- Geocode addresses using each county's geocoding service**: Points to a cluster of nodes in the middle of the workflow.
- De-duplicate against existing records in CARL**: Points to a node in the middle of the workflow.
- Format date fields**: Points to a node in the middle of the workflow.
- Write cases to feature service**: Points to the final output node.

Other annotations include:

- Overlay cases with city boundaries**: Points to a node in the middle of the workflow.
- In view data:**
 - Run with caching enabled and click [Inspect feature cache](#)
 - Click [View source data](#)
 - Drop files here

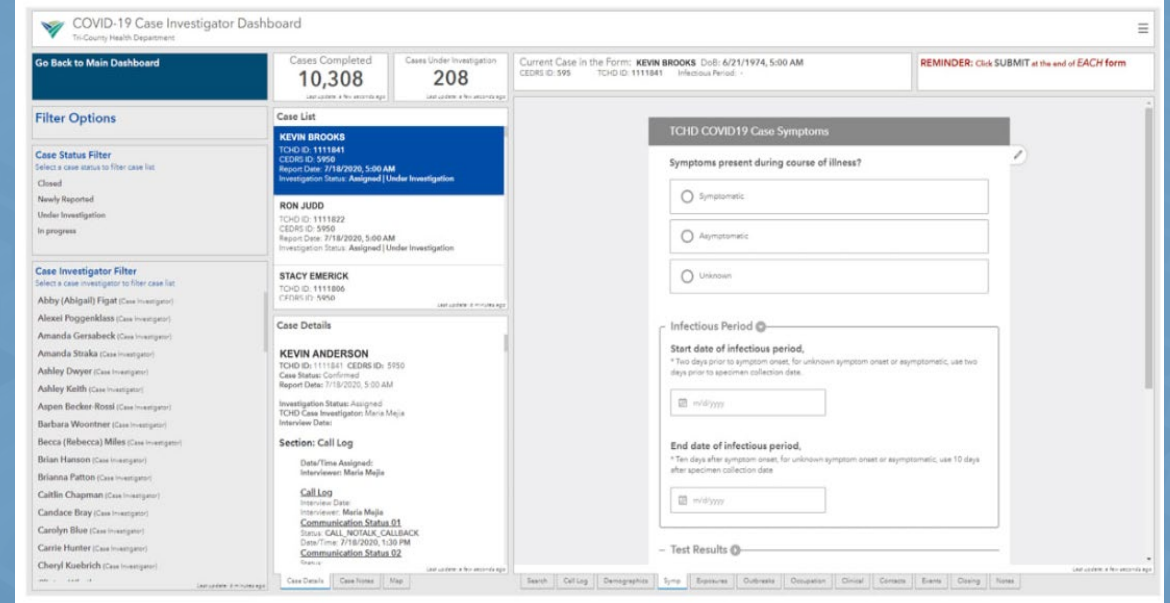


CDE Surveillance System Example

COVID19 Case Investigation Coordinator ArcGIS Online Dashboard



COVID19 Case Investigator ArcGIS Online Dashboard



ADAMS COUNTY
HEALTH DEPARTMENT

Your Health. Our Mission.

Review:

Services Provided

Goals/Timeline

Open Data Site

Deliverable
Examples

Current/Future
State

Communicable
Disease Surveillance
System

Population Health Epidemiology & Data Science

*The Epidemiology and Data Science Division at ACHD strives to eliminate disease and health disparities in Adams County through **Innovation, Collaboration, Inclusion***



Thank you!

Gabriela Reyes, MPH
Health Data & GIS Manager
greyes@adcogov.org
(832) 948-8420



ADAMS COUNTY
HEALTH DEPARTMENT
— Your Health. Our Mission. —

Adams County Board of Health
August 17th, 2023