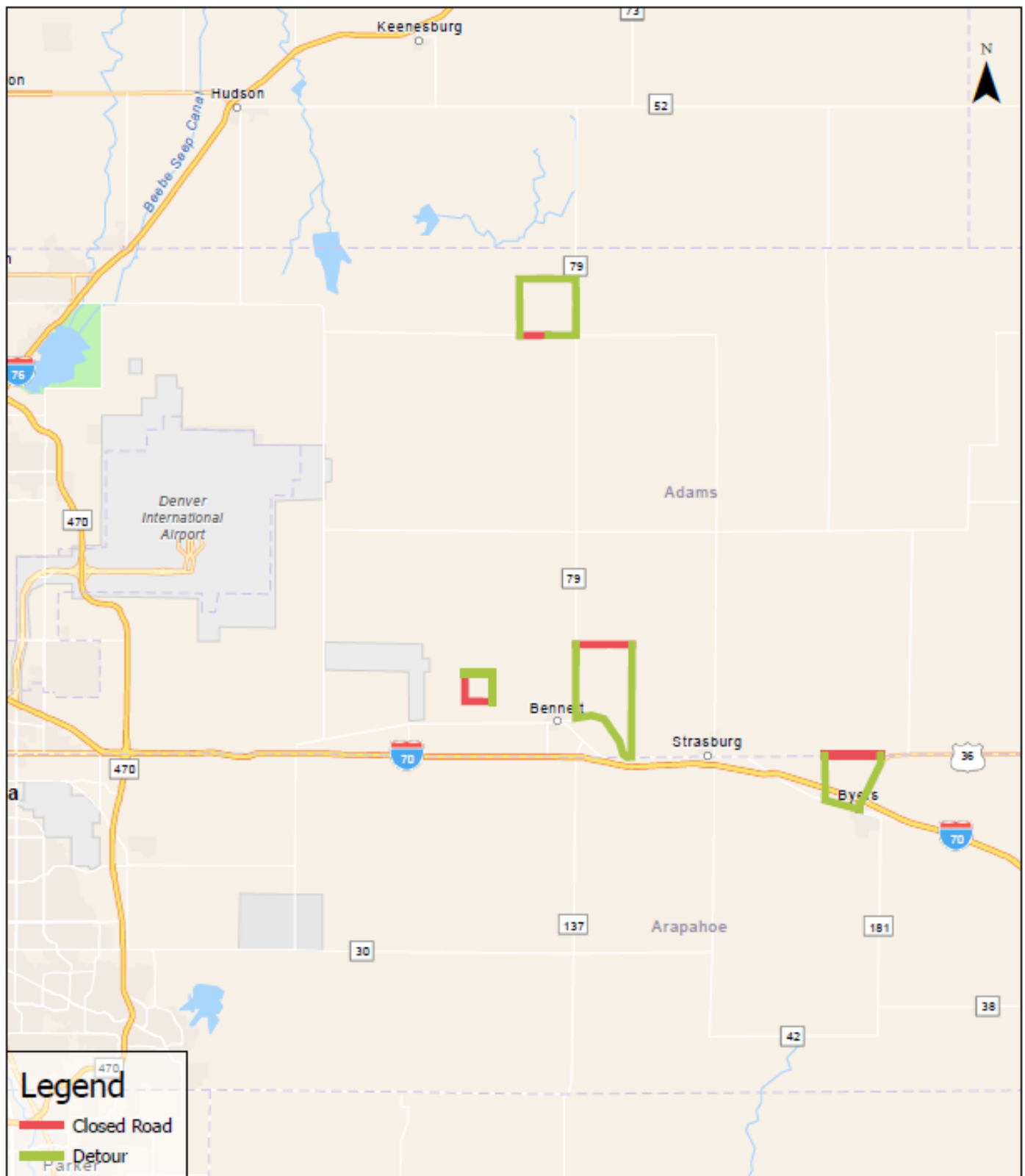


Roadway Closure and Detour

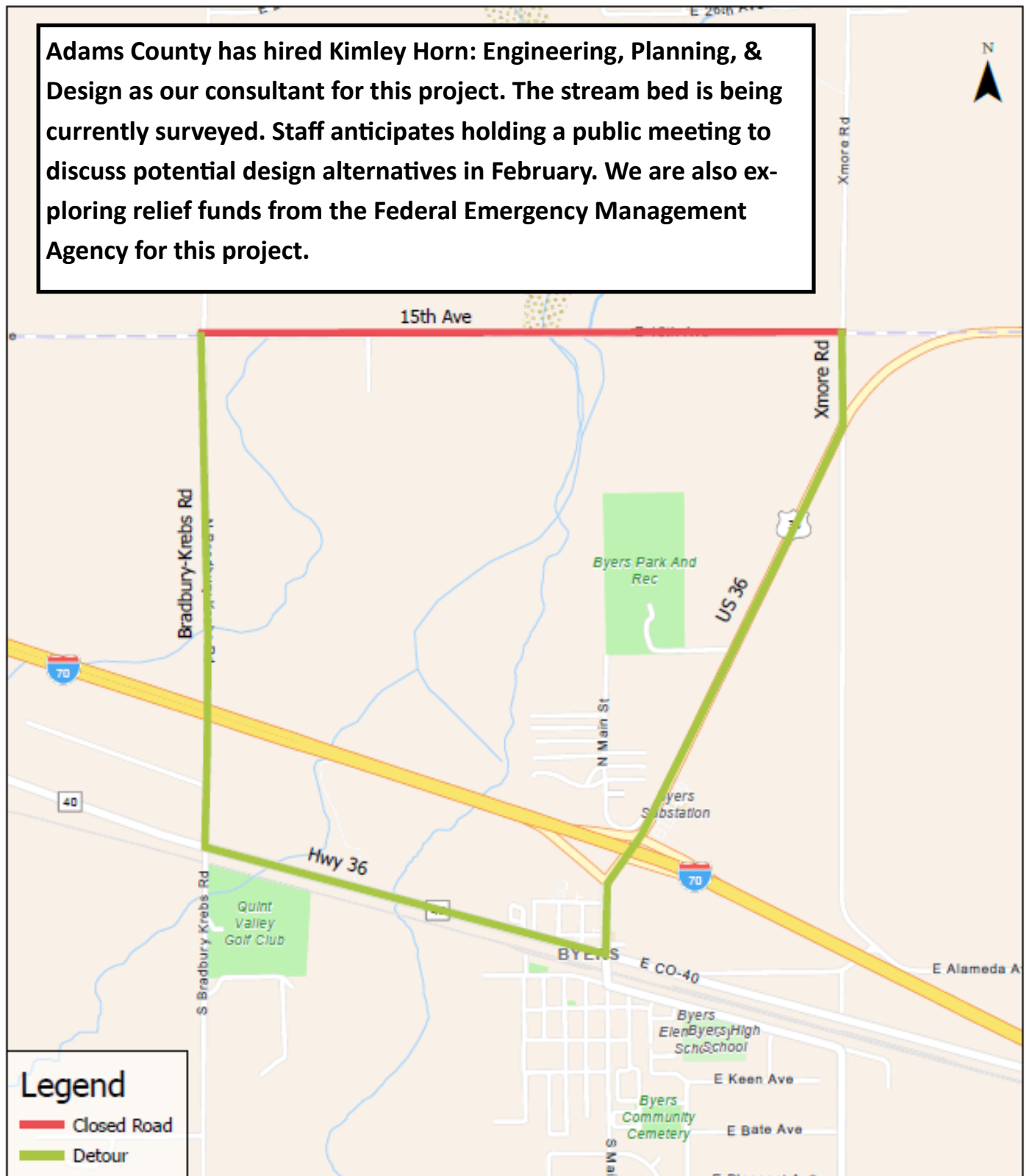
Overview - Updated 9/20/23



Roadway Closure and Detour

15th Ave from Bradbury-Krebs Rd to Xmore Rd

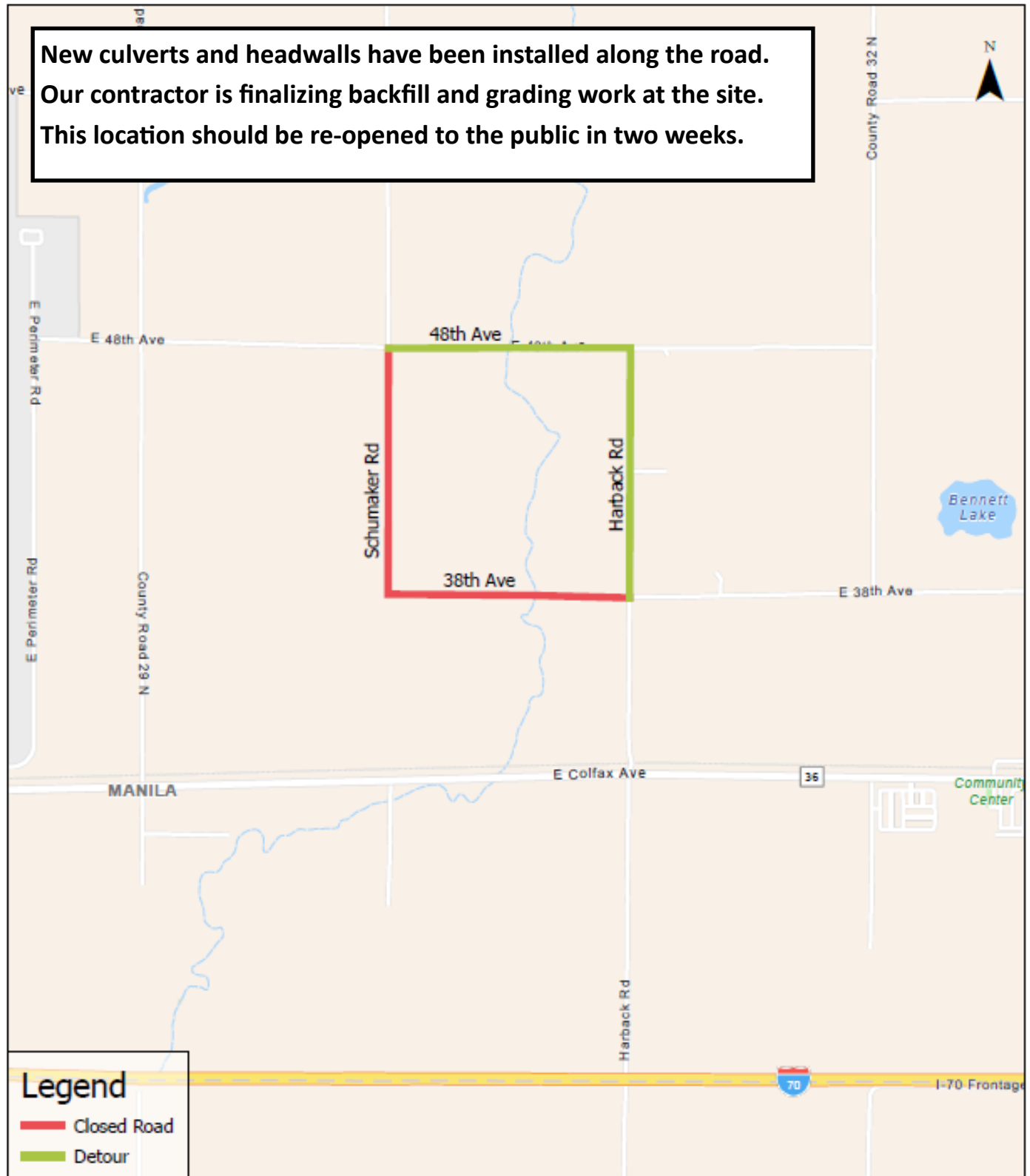
Adams County has hired Kimley Horn: Engineering, Planning, & Design as our consultant for this project. The stream bed is being currently surveyed. Staff anticipates holding a public meeting to discuss potential design alternatives in February. We are also exploring relief funds from the Federal Emergency Management Agency for this project.



Roadway Closure and Detour

38th Ave from Harback Rd to Schumaker Rd

New culverts and headwalls have been installed along the road. Our contractor is finalizing backfill and grading work at the site. This location should be re-opened to the public in two weeks.

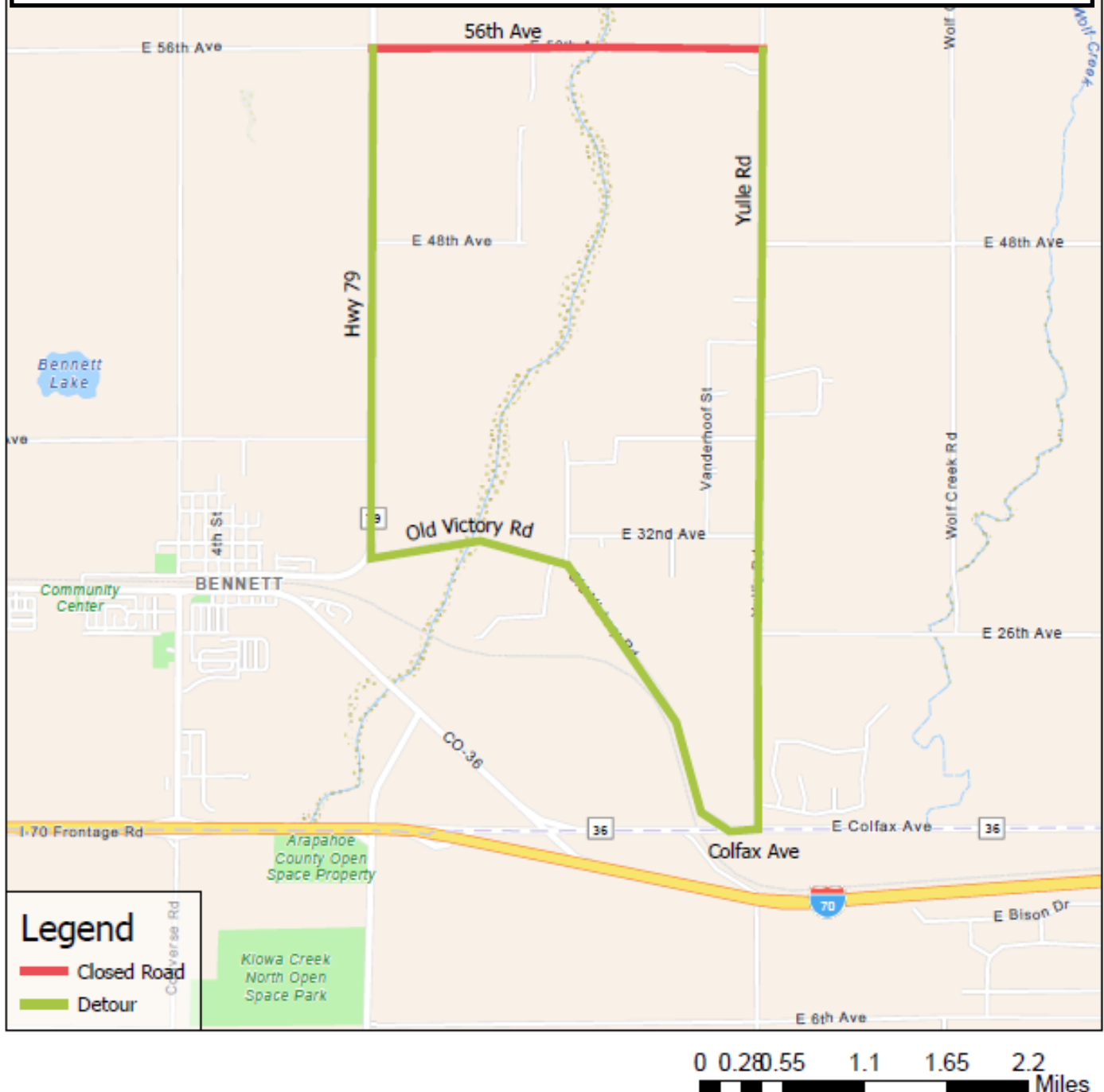


0 0.2 0.4 0.8 1.2 1.6 Miles

Roadway Closure and Detour

56th Ave from Yulle Rd to Hwy 79

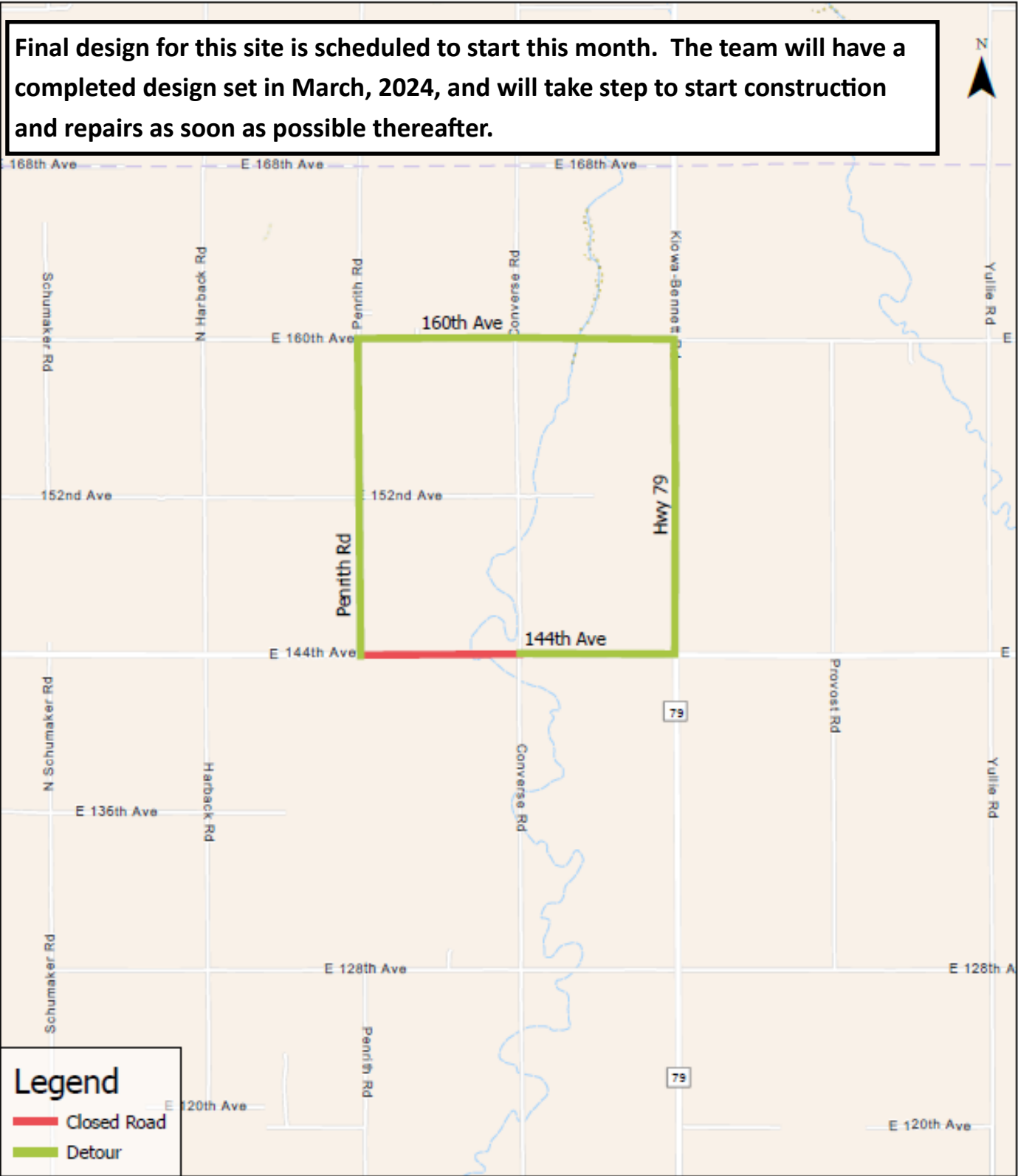
The design for replacement culverts is being finalized. Adams County is also planning to lower the roadway elevation so that it functions as a low water crossing with some cast-in-place box culverts. Construction is planned to start in two weeks with completion in 60 days. The roadway will be reopened once this phase is complete. We anticipate adding a paved roadway surface in the spring when the weather is better.



Roadway Closure and Detour

144th Ave from Penrith Rd to Converse Rd

Final design for this site is scheduled to start this month. The team will have a completed design set in March, 2024, and will take step to start construction and repairs as soon as possible thereafter.



0 0.33 0.65 1.3 1.95 2.6 Miles