

# Prevent Childhood Lead Poisoning From Lead-Based Paint

Exposure to lead can seriously harm a child's health



Damage to brain and nervous system



Slowed growth and development



Learning and behavior problems



Hearing and speech problems

This can cause:

- Lower IQ
- Decreased ability to pay attention
- Underperformance at school

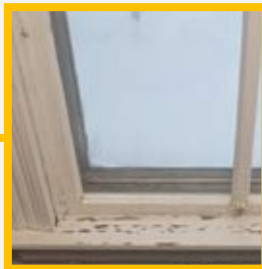
From U.S. Centers for Disease Control and Prevention



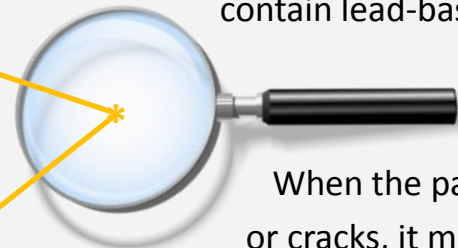
## Child Cares



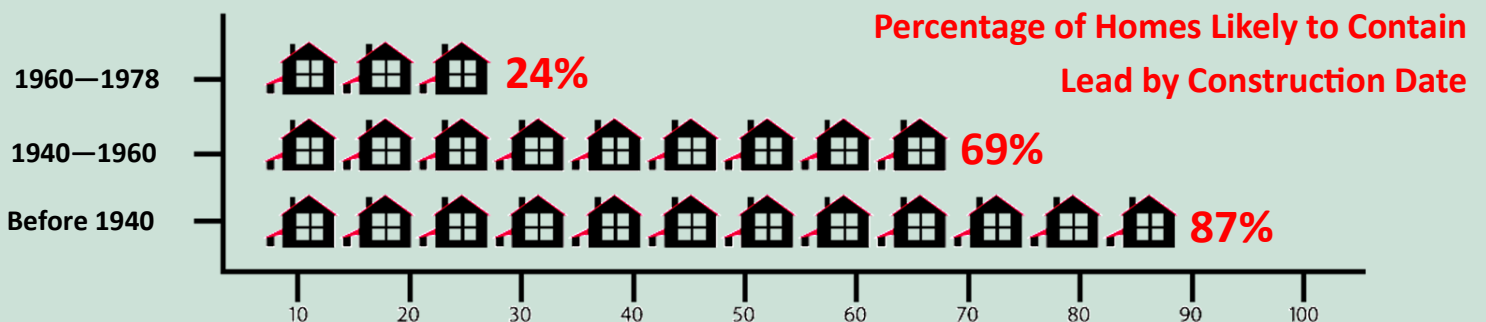
Built Before 1978



Buildings built before 1978, when lead-based paints were banned, may contain lead-based paint.



When the paint peels or cracks, it makes lead dust. Dust particles are too small to see, but children can be poisoned by swallowing or inhaling even a little lead dust.



For child care health and sanitation resources visit: [www.colorado.gov/cdphe/child-care](http://www.colorado.gov/cdphe/child-care).

For more information about lead poisoning prevention, visit: <https://www.epa.gov/lead>.



# Protect yourself and children in your facility from dangers of lead-based paint

**500,000 U.S. children ages 1-5 have blood lead levels high enough to damage their health**

<http://www.cdc.gov/nceh/lead/>



Steps you can take



## Childhood lead poisoning is **100% preventable**

**1** Determine the age of your facility.

**2**

If your facility was built before 1978, assume all painted surfaces contain lead, unless testing shows otherwise.

**A** Consider getting a lead inspection or risk assessment.



To find a lead inspector or risk assessor, visit the Colorado Lead Services Directory: <https://www.colorado.gov/pacific/cdphe/test-lead-based-paint>.

**B** Be sure paint is in good repair and is free of cracking, peeling and risk of disturbance by children.\*



**C** Become or hire a lead-safe certified firm for repairs or renovations.\*



To find an EPA Lead-Safe Certified Renovator, visit: <https://www.epa.gov/lead> and select Find a Lead-Safe Certified firm.

\* It's the law! Take these steps to ensure you're in compliance with Colorado child care health regulations.

**3**

Regularly wash children's hands and toys.



**4**

Take shoes off indoors. Keep lead dust out.



**5**

Wet-mop floors. Wet-wipe windows and sills.



**6**

Learn about lead poisoning prevention. Be a resource for families!

For additional prevention tips, visit the Center for Disease Control and Prevention lead tips website at: <http://www.cdc.gov/nceh/lead/tips.htm>.



# Lead can be found throughout a child's environment



## Doors & Windows

In pre-1978 buildings, dust from lead-based paint can be created where painted surfaces rub together when doors and windows are opened and closed.

## Soil

When exterior lead-based paint from older buildings flakes or peels it can get into the soil where children could be exposed to it.



## Baseboards and Walls

Check baseboards and walls for peeling, cracking or chipped paint in pre-1978 buildings. Learn about LEAD-SAFE WORK PRACTICES before doing anything that may disturb lead-based paint.



## Staircases and Banisters

If you have older painted stairs and banisters in a pre-1978 building, check them for any peeling, cracking or chipped paint from wear and tear over the years.

## Keep Lead Dust Out

Lead dust can be tracked into your facility from the soil outside. Put walk-off mats inside doors. Teach children to wipe their shoes and take them off indoors.



Take action to make your child care lead safe. It's the law.



For more Colorado child care health resources, visit: [www.colorado.gov/cdphe/child-care](http://www.colorado.gov/cdphe/child-care).

For more information about lead poisoning prevention, visit: <https://www.epa.gov/lead>.

