

EXISTING CONDITIONS

PROJECT GOALS:

This area has a history of repeated flooding events and because of that, sediment and debris often get deposited on top of the roadway.

The goals of this project are:

- Address sediment deposition impacts
- Reduce the frequency of maintenance
- Improve public safety
- Identify a potential long-term solution

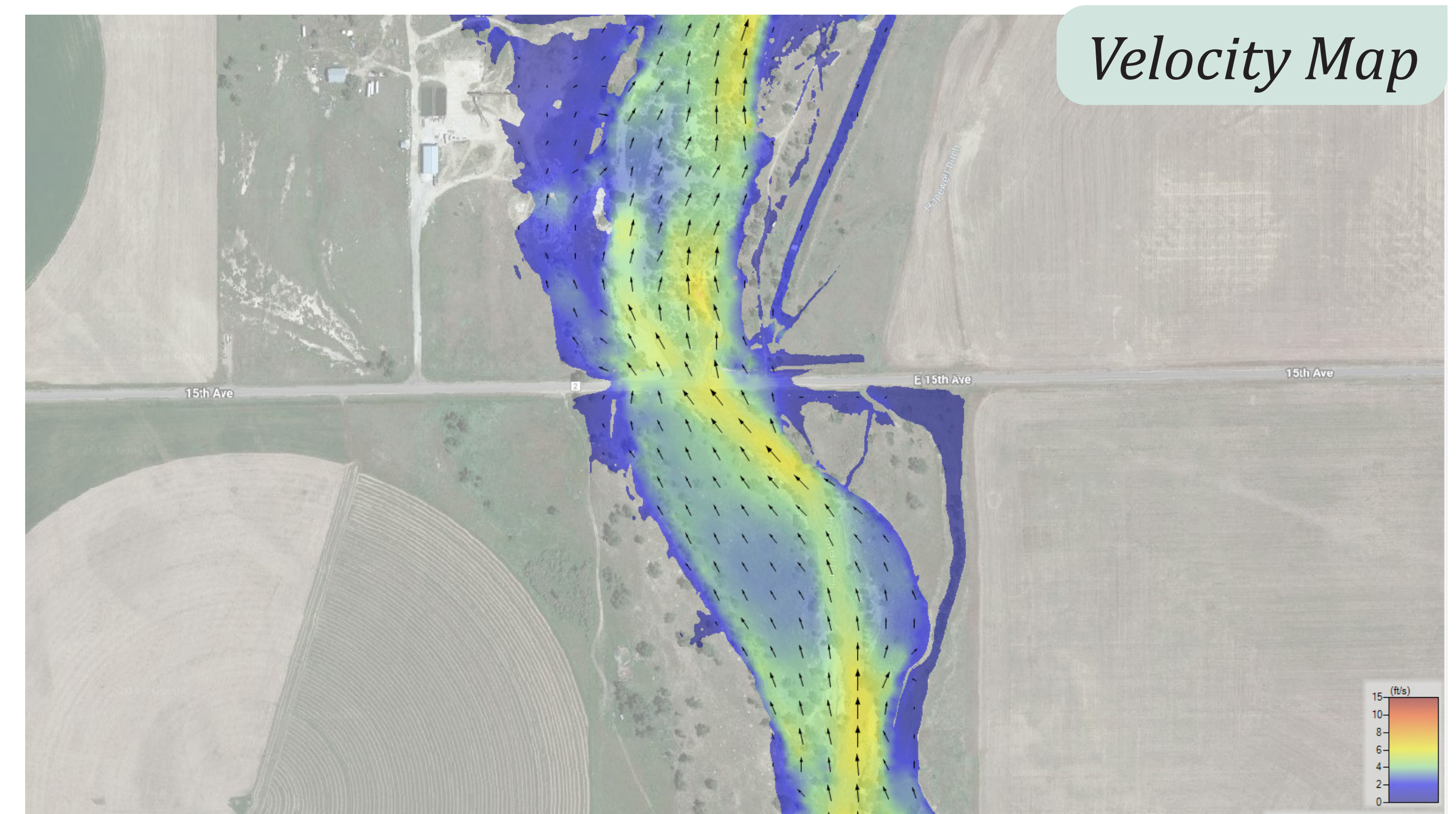
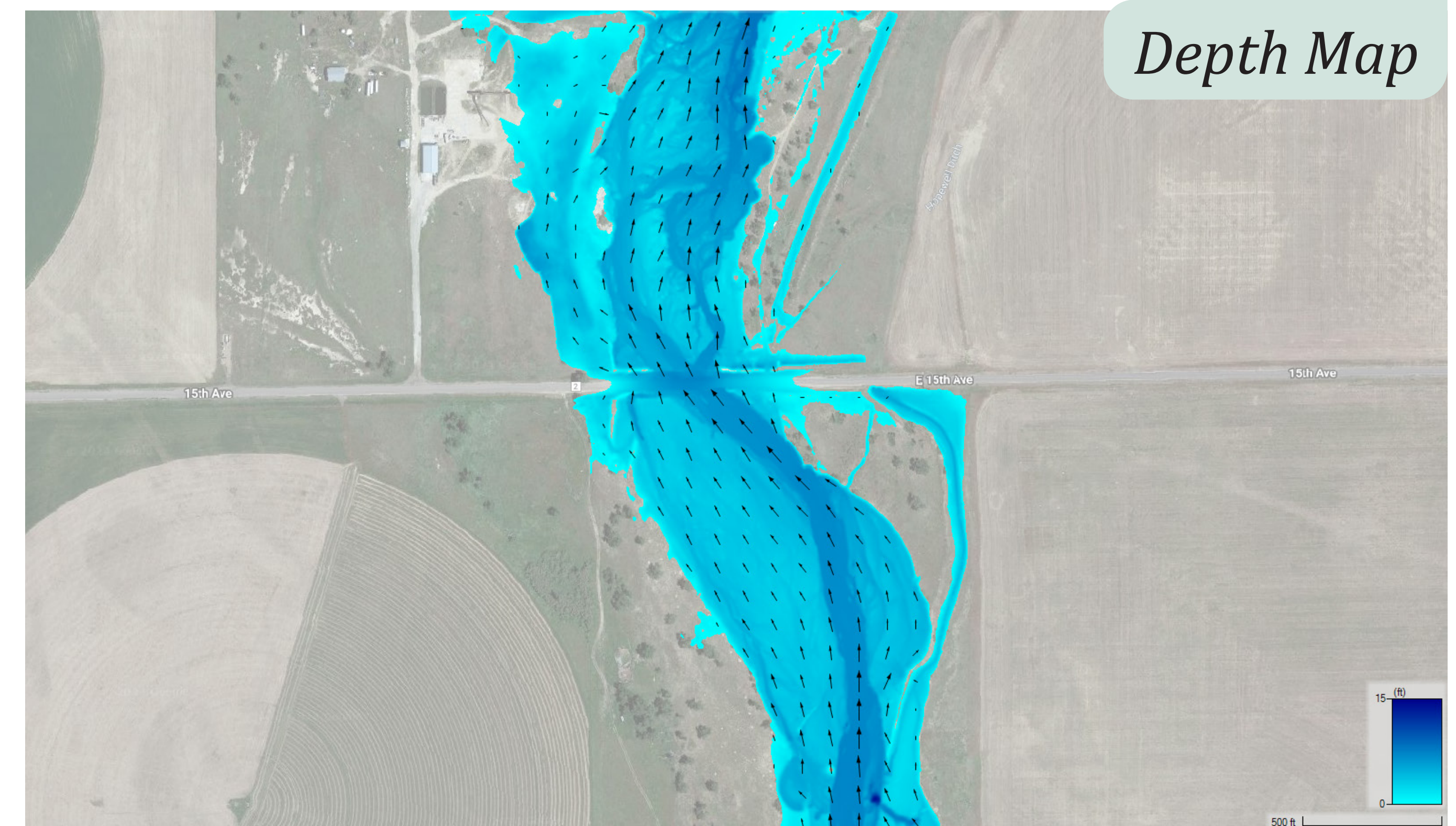
We want to address your concerns and give you a voice in helping us meet the project goals.

PUBLIC SAFETY RISKS:

**6" CAN KNOCK
OVER AN ADULT**

**12" CAN
FLOAT A CAR**

**18" CAN CARRY
A TRUCK**



HISTORIC CONDITIONS



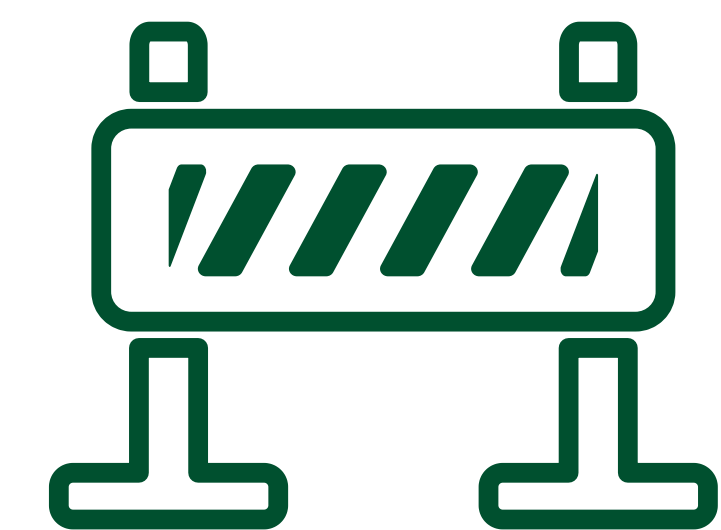
145 MAINTENANCE ISSUES
SINCE 2009



3 MAJOR FLOOD EVENTS IN
2013, 2015, AND 2023



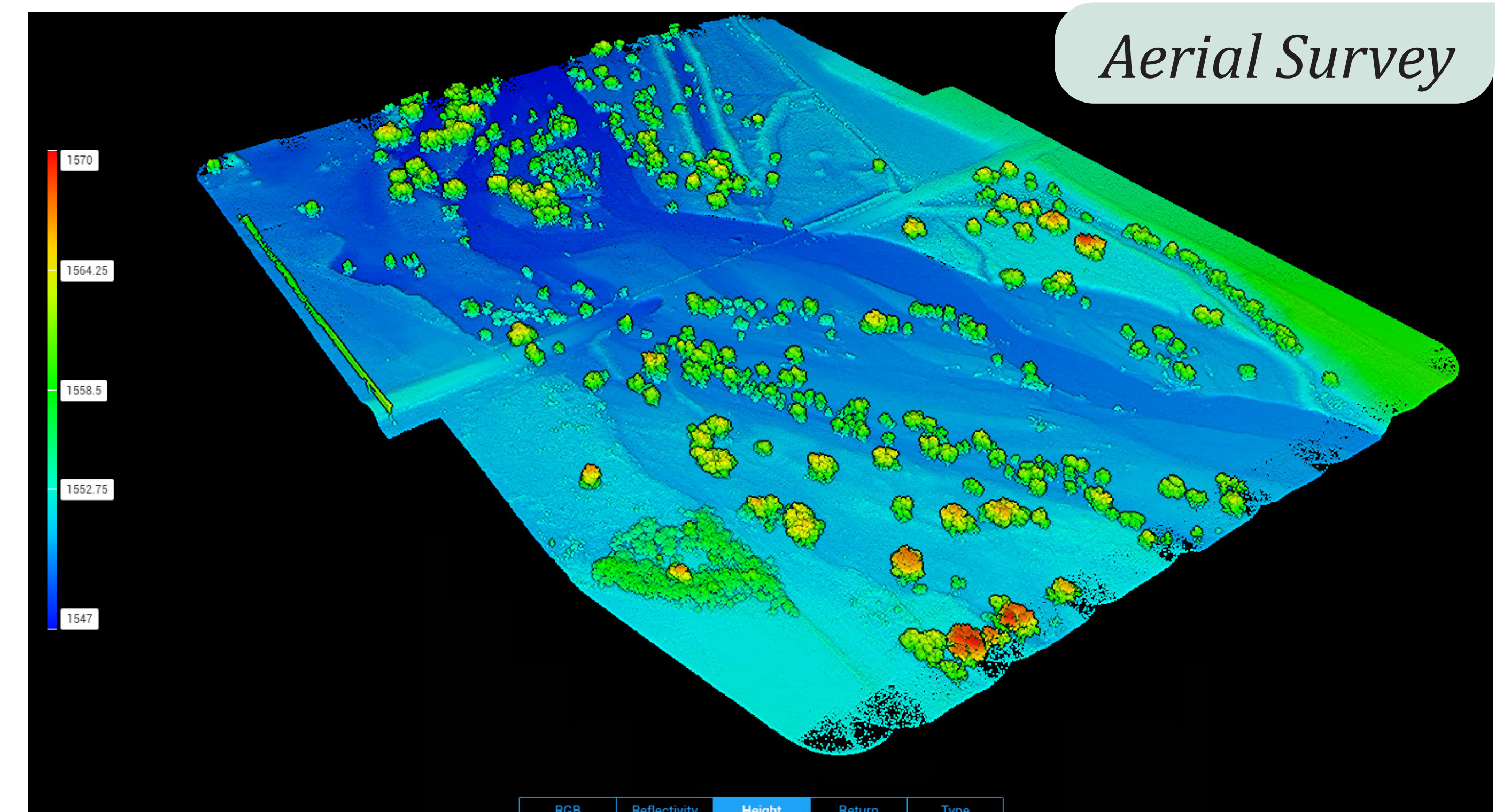
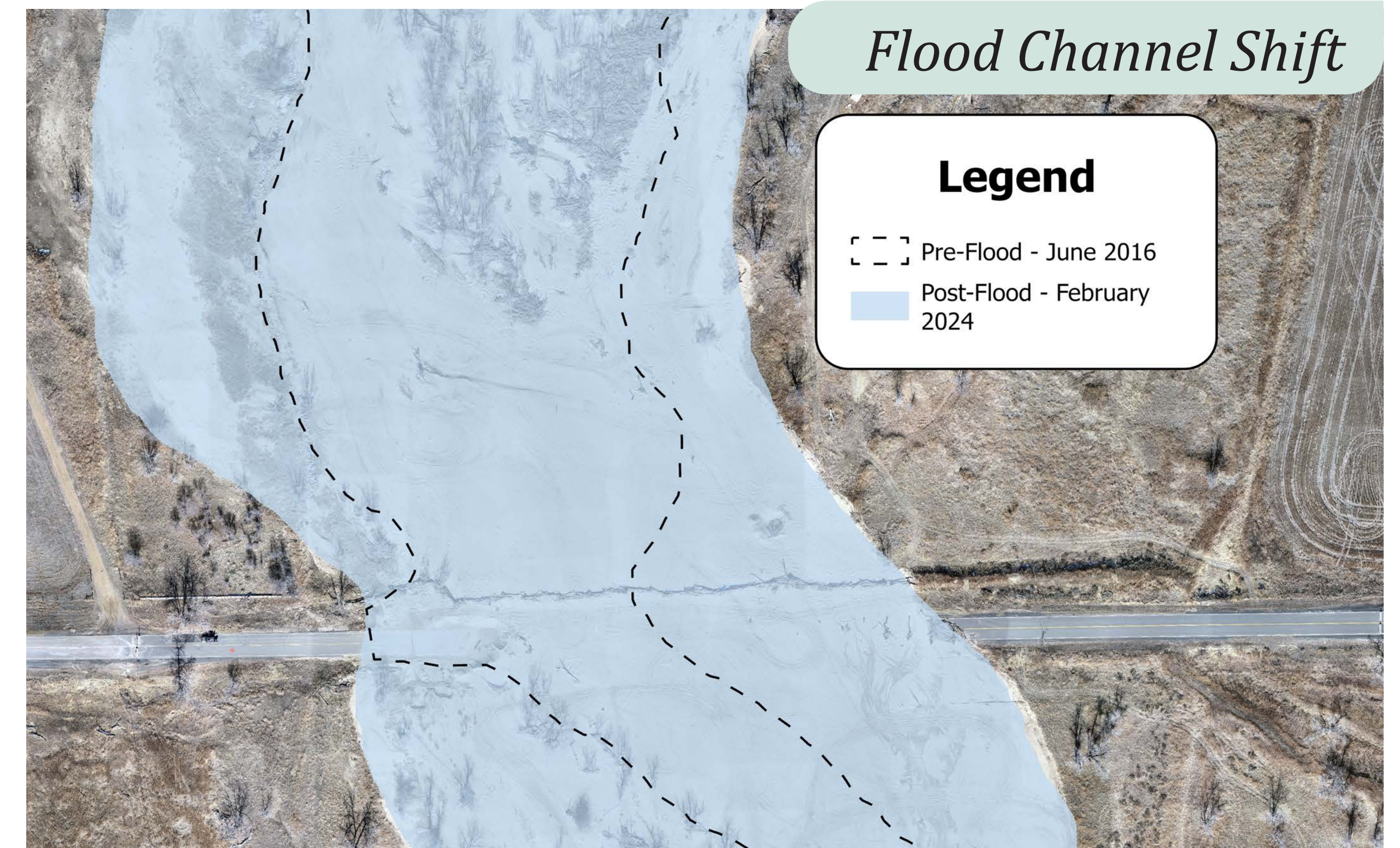
14 TIMES EACH YEAR THE COUNTY
CLEANS THE CROSSING TO KEEP
VEHICLES SAFE



**MULTIPLE ROAD CLOSURES
EACH YEAR DUE TO FLOODING
OR MAINTENANCE**



**SEVERAL INSTANCES OF EMERGENCY
RESCUES INVOLVING TRAPPED
VEHICLES DURING FLOODS**




EXISTING CONDITIONS



TIMELINE OPPORTUNITIES AND SOLUTIONS

ROUND 1
**MARCH
2024**



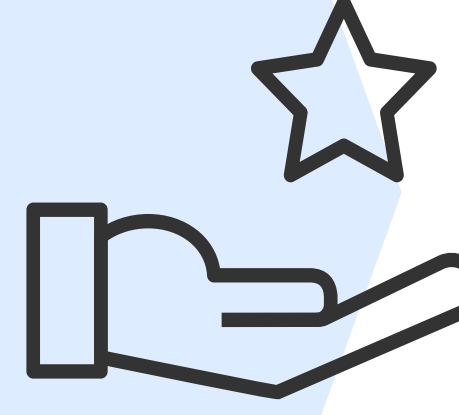
- » Initial engagement
- » Surveying completed

ROUND 2
**APRIL
2024**



- » Clean up the area
- » Evaluate public and stakeholder input
- » Define possible alternatives
- » Engagement follow-up

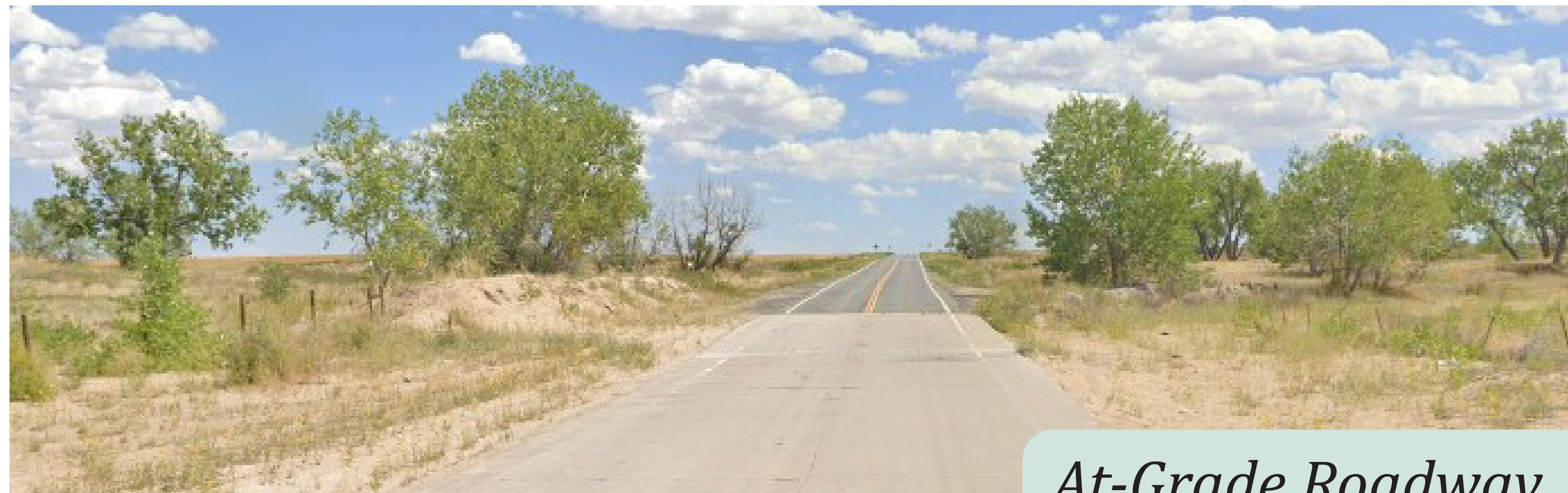
ROUND 3
**JULY
2024**



- » Final engagement
- » Begin evaluating long-term solutions

Opportunities and Solutions

- » Removing sediment
- » Reconstruction of the roadway
- » Opening the roadway
- » Implementing short-term alternatives/solutions
- » Identify funding sources
- » Implement long-term alternatives/solutions
- » Develop maintenance and inspection plans



At-Grade Roadway



Bridge Crossing

WE WANT YOUR FEEDBACK!

Place two sticky dots in the sections *you believe are the most important to focus on* as the project area gets improved.

VEHICLE SAFETY

Examples:

- » Allow cars to drive during floods
- » Install warning mechanisms
- » Reduce speeding

FLOODPLAIN CONVEYANCE

Examples:

- » Keep water in the creek
- » Let water flow under the road
- » Protect the area from erosion

ROADWAY IMPROVEMENTS

Examples:

- » Install culverts
- » Make a bridge
- » At-grade roadway

MAINTENANCE

Examples:

- » Develop a plan
- » Remove sediment and debris in the creek