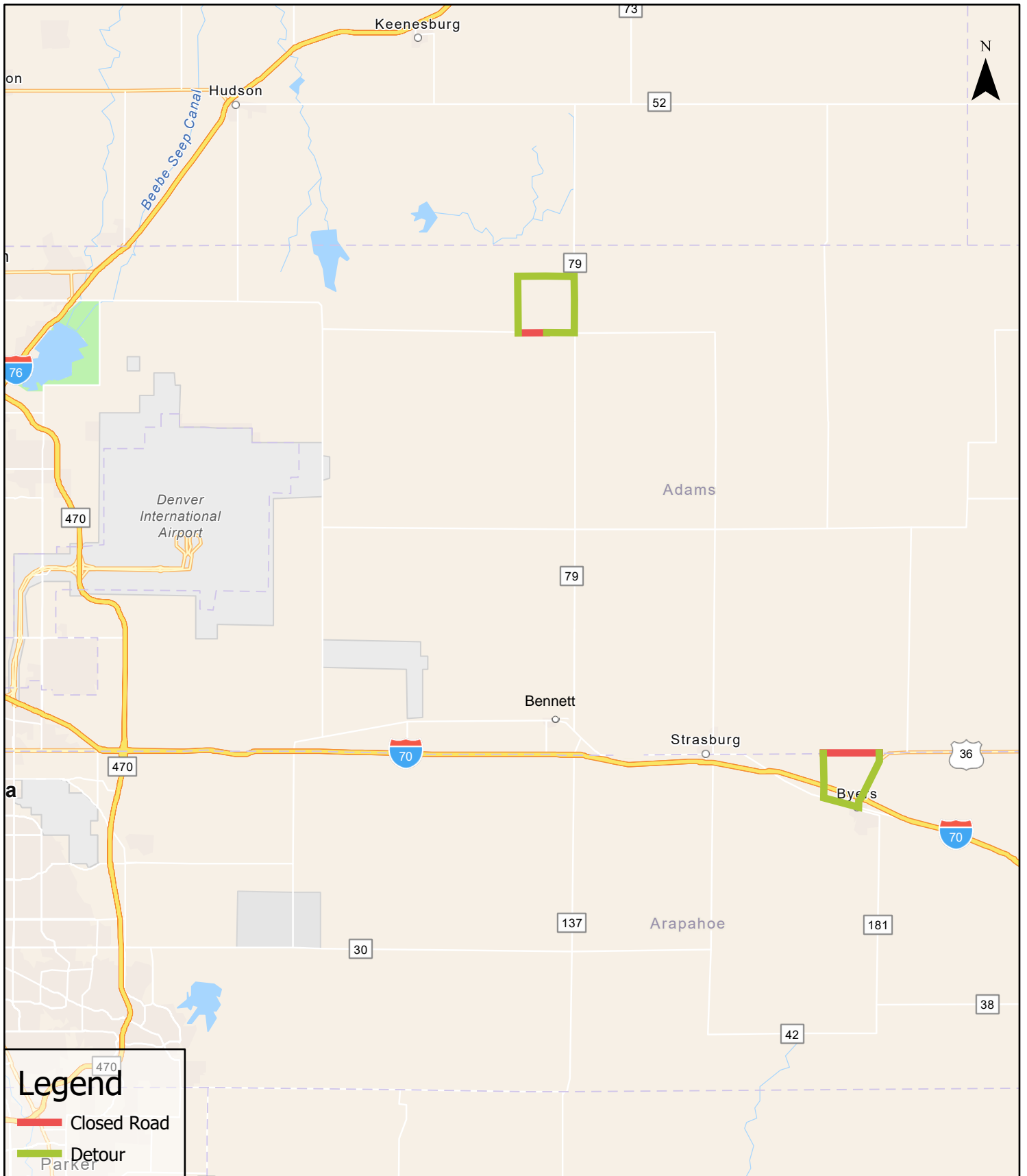




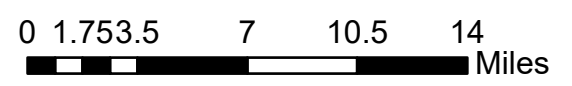
Roadway Closure and Detour

Overview- Updated 4/18/2024



Legend

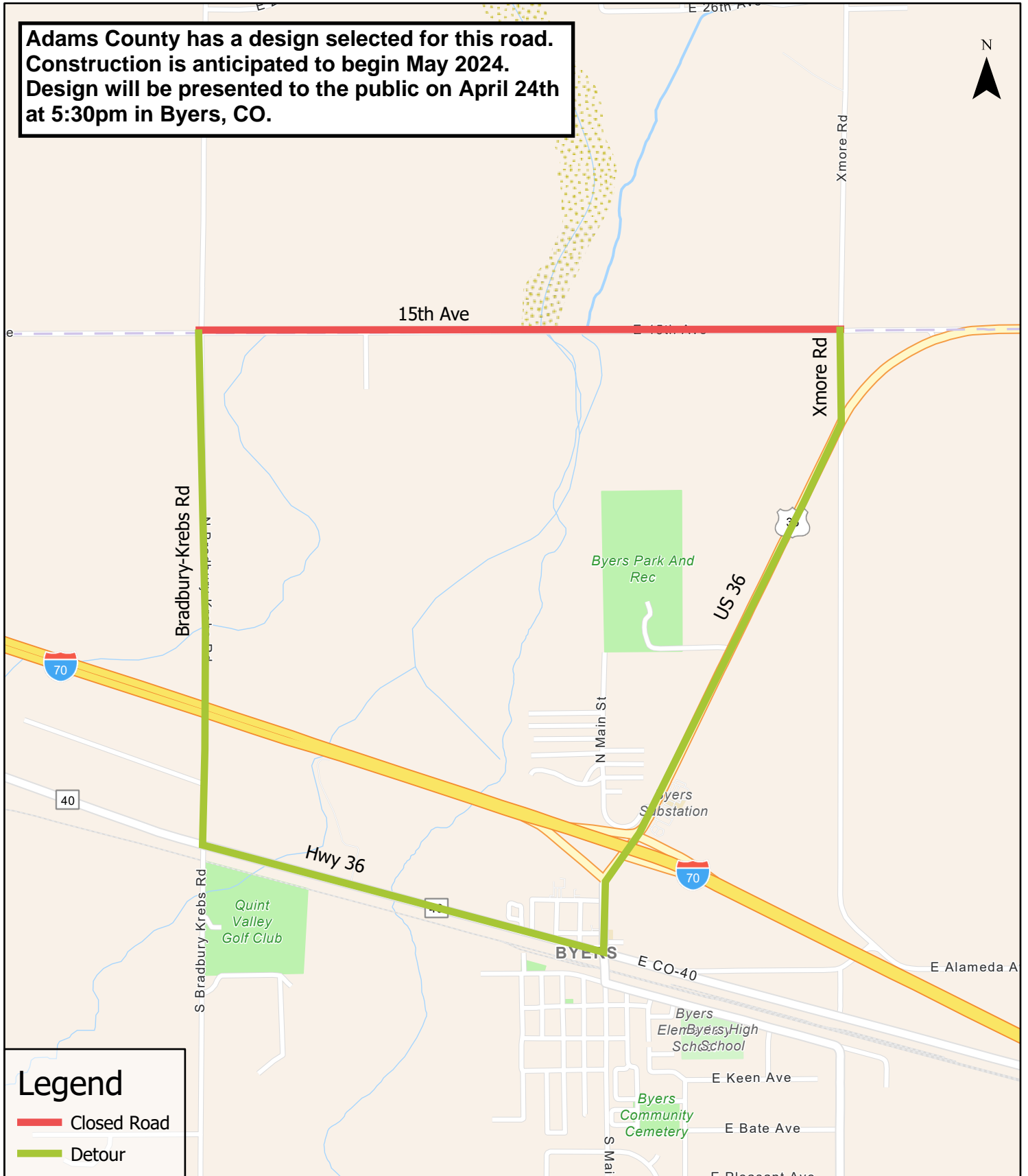
-  Closed Road
-  Detour





Roadway Closure and Detour

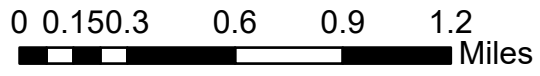
15th Ave from Bradbury-Krebs Rd to Xmore Rd

Adams County has a design selected for this road. Construction is anticipated to begin May 2024. Design will be presented to the public on April 24th at 5:30pm in Byers, CO.



Legend

-  Closed Road
-  Detour





Roadway Closure and Detour

144th Ave from Penrith Rd to Converse Rd

Adams County had obtained a contractor to repair the bridge and anticipates construction to begin summer of 2024.



Legend

-  Closed Road
-  Detour

0 0.330.65 1.3 1.95 2.6 Miles