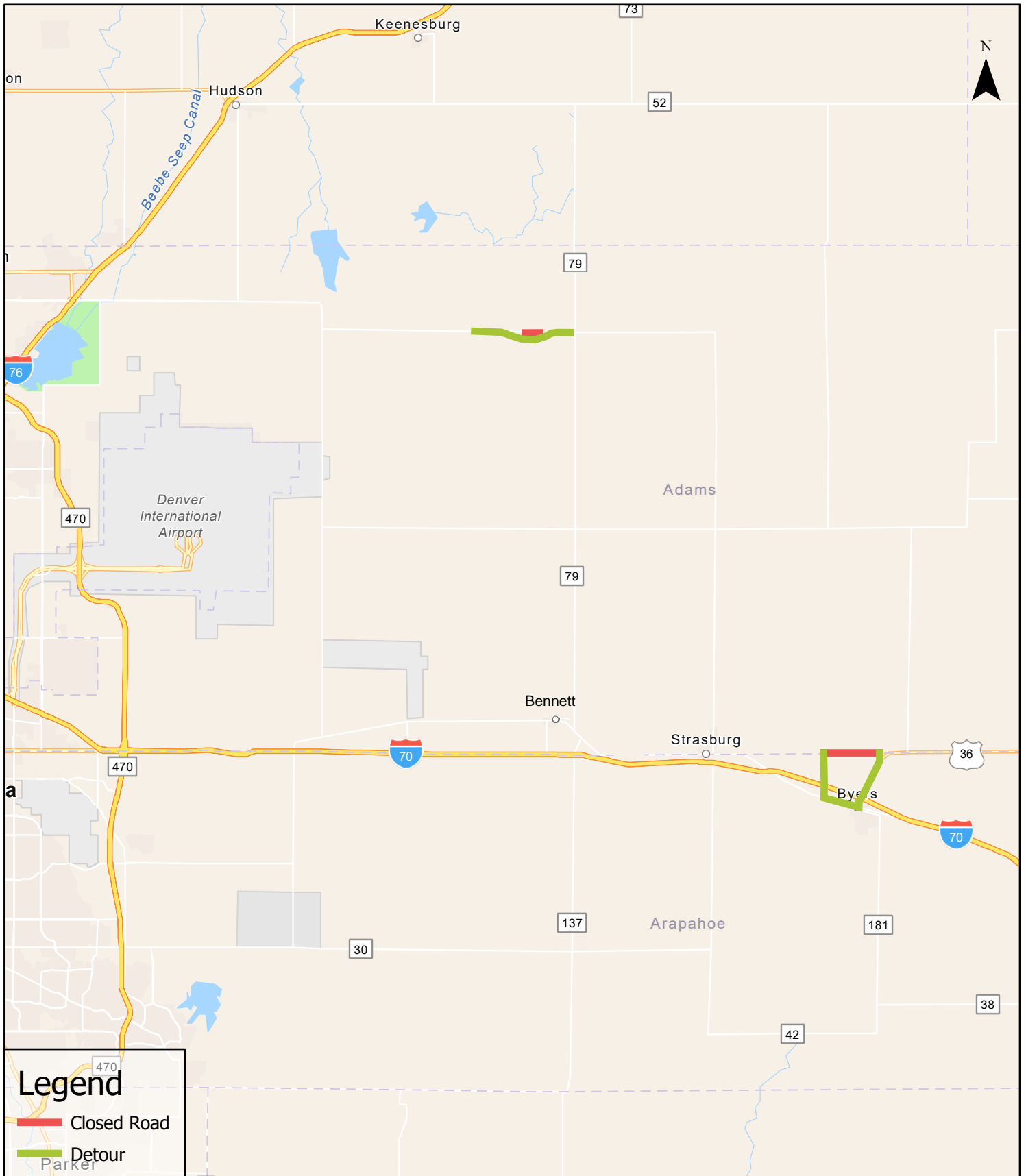




Roadway Closure and Detour

Overview- Updated 6/12/24



Legend

-  Closed Road
-  Detour

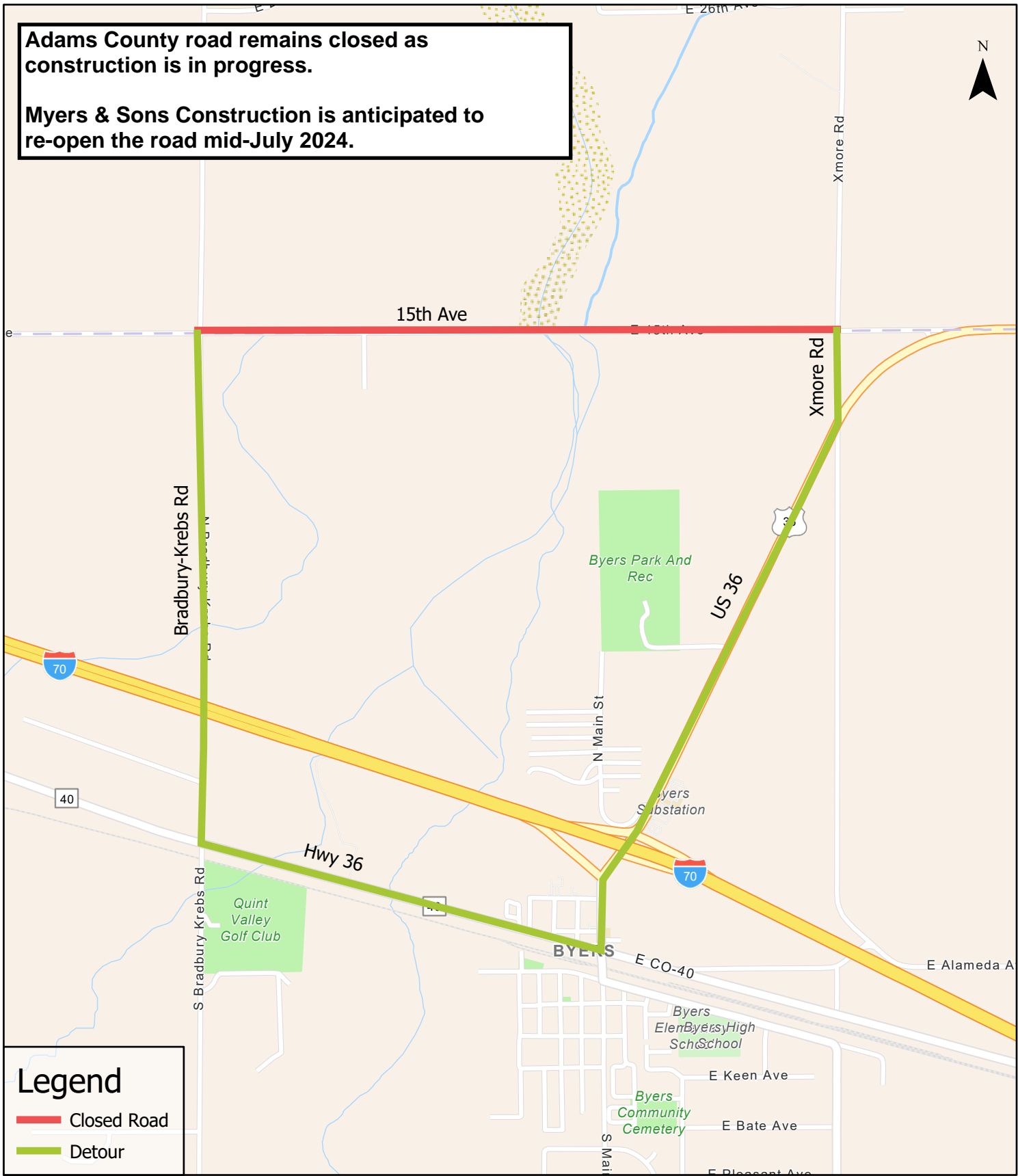
0 1.753.5 7 10.5 14 Miles

Roadway Closure and Detour



15th Ave from Bradbury-Krebs Rd to Xmore Rd

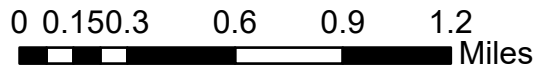
Adams County road remains closed as construction is in progress.

Myers & Sons Construction is anticipated to re-open the road mid-July 2024.



Legend

-  Closed Road
-  Detour

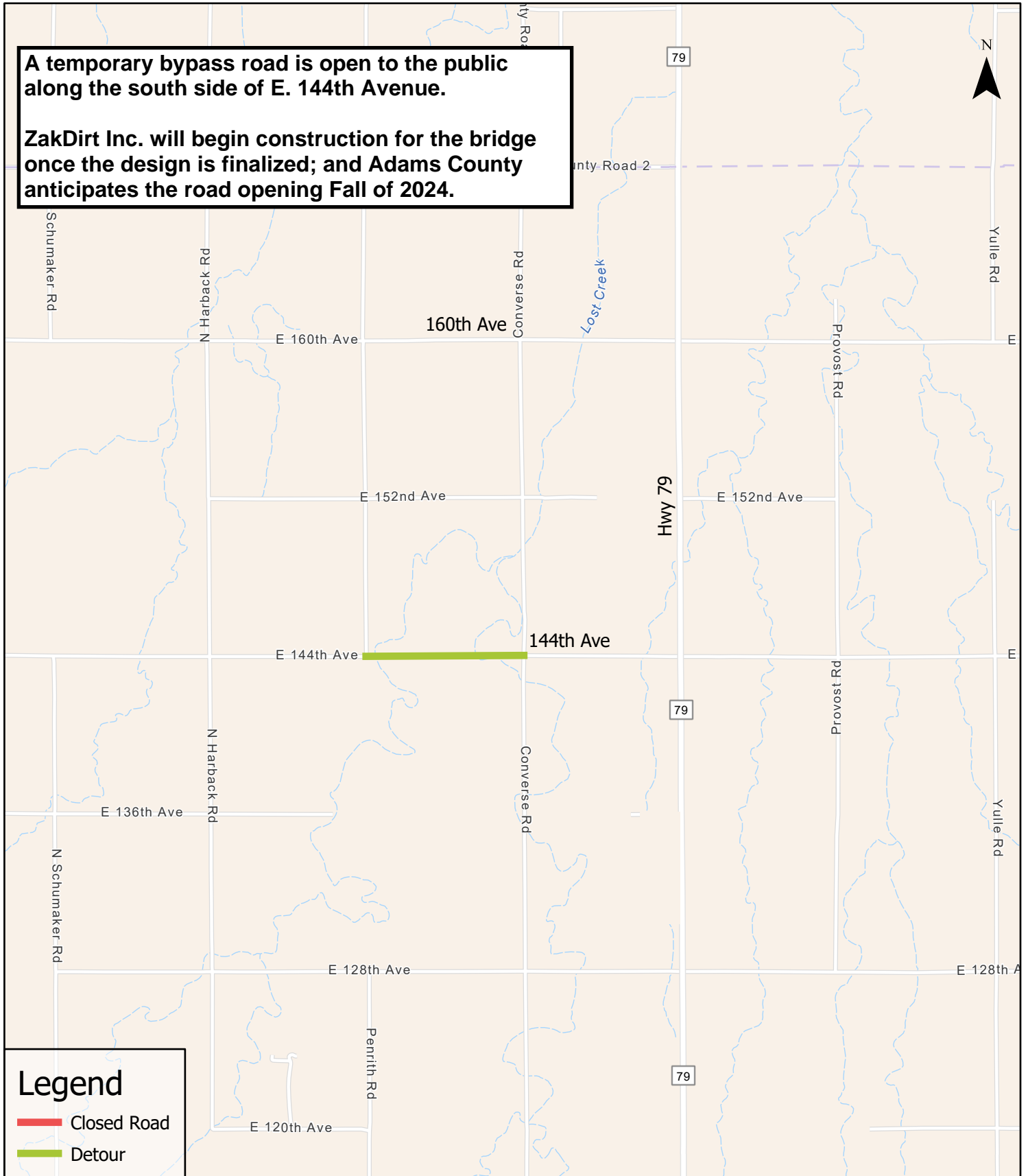


Roadway Closure and Detour



144th Ave from Penrith Rd to Converse Rd

A temporary bypass road is open to the public along the south side of E. 144th Avenue.

ZakDirt Inc. will begin construction for the bridge once the design is finalized; and Adams County anticipates the road opening Fall of 2024.



Legend

-  Closed Road
-  Detour

Detour Length = 7.0 miles

