

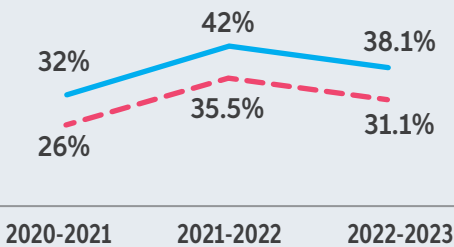
ADAMS COUNTY ATTENDANCE INITIATIVE ATTENDANCE MATTERS

TAKEAWAYS FROM 2022-23 FROM SCHOOL DISTRICTS SERVING ADAMS COUNTY

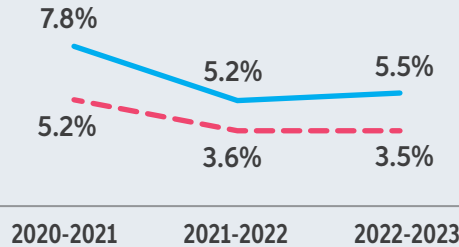
- We saw an improvement similar to state rates in attendance, chronic absenteeism, and truancy.
- There was variation of rates among districts in Adams County.
- Overall rates were lower for attendance and higher for chronic absenteeism.

ADAMS COUNTY TRENDS FOLLOW STATE OF COLORADO TRENDS

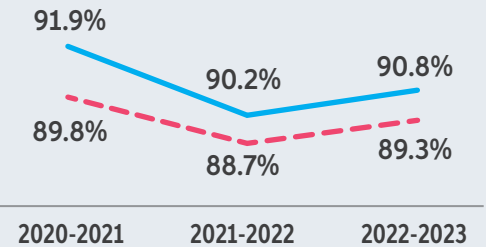
Colorado State and Adams County Chronic Absentee Rates



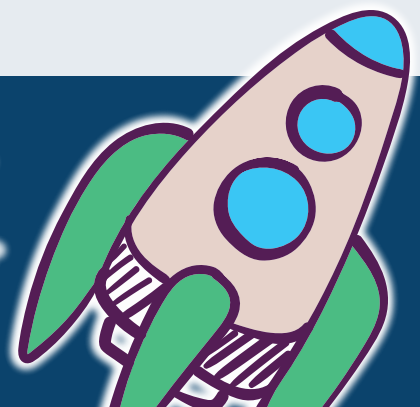
Colorado State and Adams County Truancy Rates



Colorado State and Adams Attendance Rates



■ Adams County ■ State

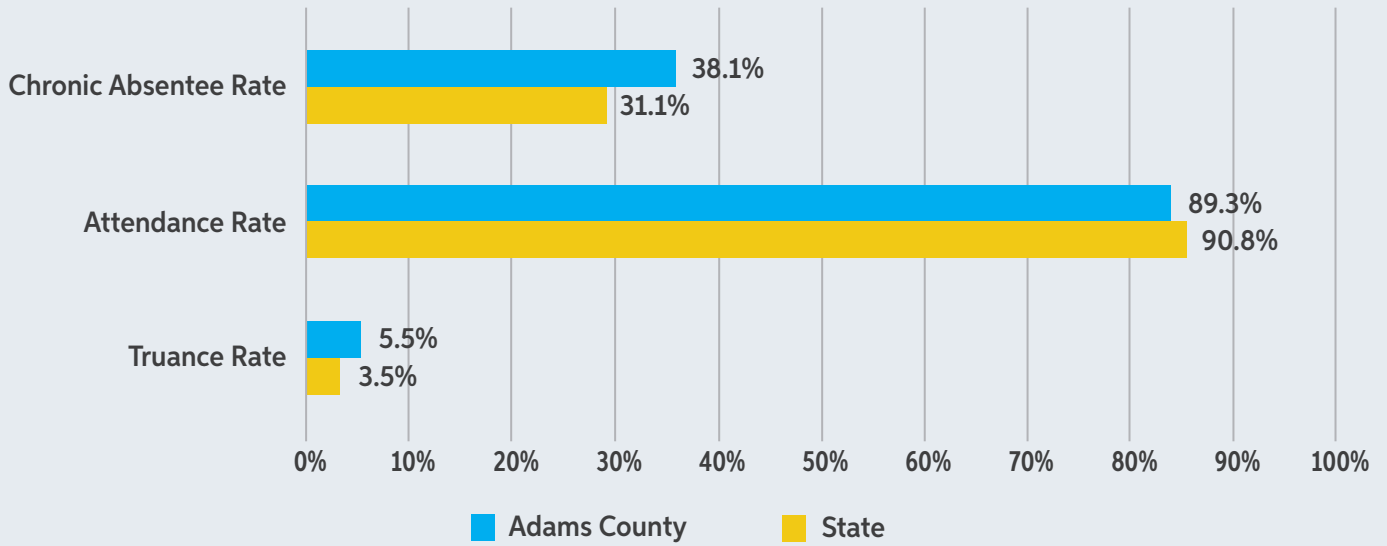


Used with permission from Attendance Works.

THERE IS A CHALLENGE AHEAD

46,000 students in Adams County were chronically absent in the 2022-23 school year.

Colorado State and Adams County 2022-2023 Attendance metrics



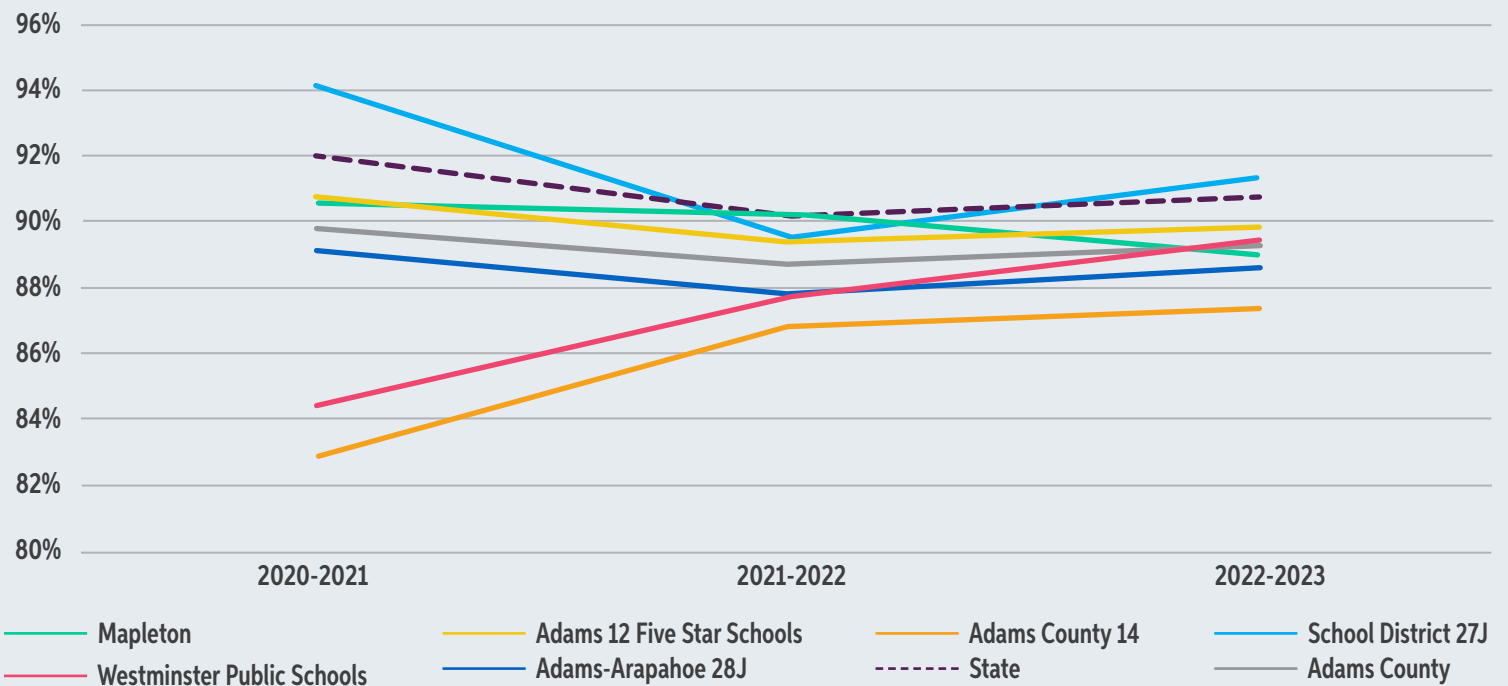
Note. Adams County rates include Mapleton 1, Adams 12 Five Star Schools, Adams County 14, School District 27J, Westminster Public Schools, and Adams-Arapahoe 28J

ADAMS COUNTY ATTENDANCE RATES ARE SLIGHTLY LOWER THAN THE STATE

Districts serving Adams County show variation around this metric but have been slightly lower than the state.

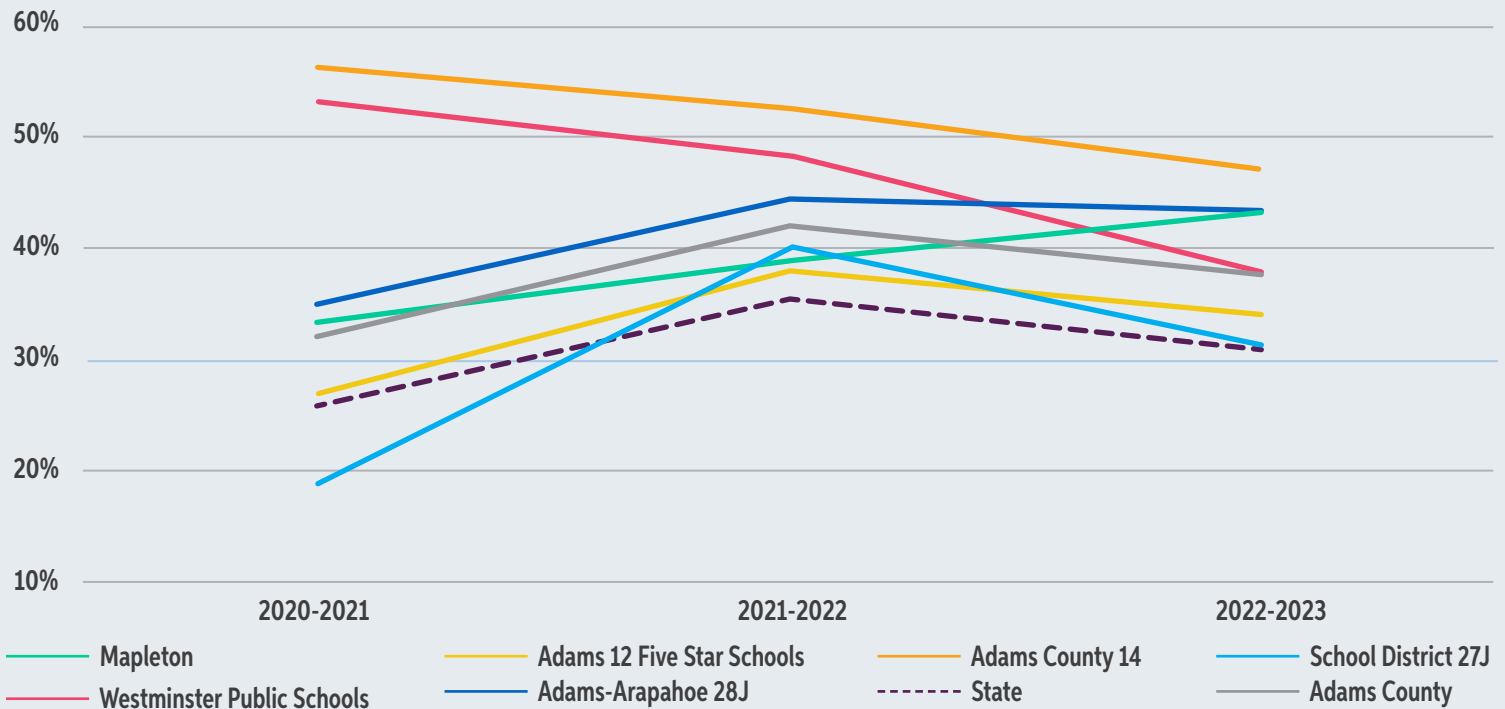


Attendance Rates for the State and Adams County Districts



ADAMS COUNTY CHRONIC ABSENTEE RATES ARE HIGHER THAN THE STATE
Districts serving Adams County show variation around this metric but are higher than the state.

Chronic Absentee Rates for the State and Adams County Districts



WHAT IS ADAMS COUNTY HEARING FROM SCHOOLS AND DISTRICTS

HEALTH AND WELLNESS

- How do we re-norm on the question of how sick is too sick to attend school?
- How do we ensure students feel safe and challenged in school?
- How do we increase a feeling of strong school-community connectedness?

SCHOOL AND DISTRICT STAFFING

- Fill all roles, including operations, support, and instructional.
- Improve consistency in staff attendance.

VALUE OF IN-PERSON AND LIVE LESSONS

- Ability to work remotely.
- Address social and economic pull away from school.

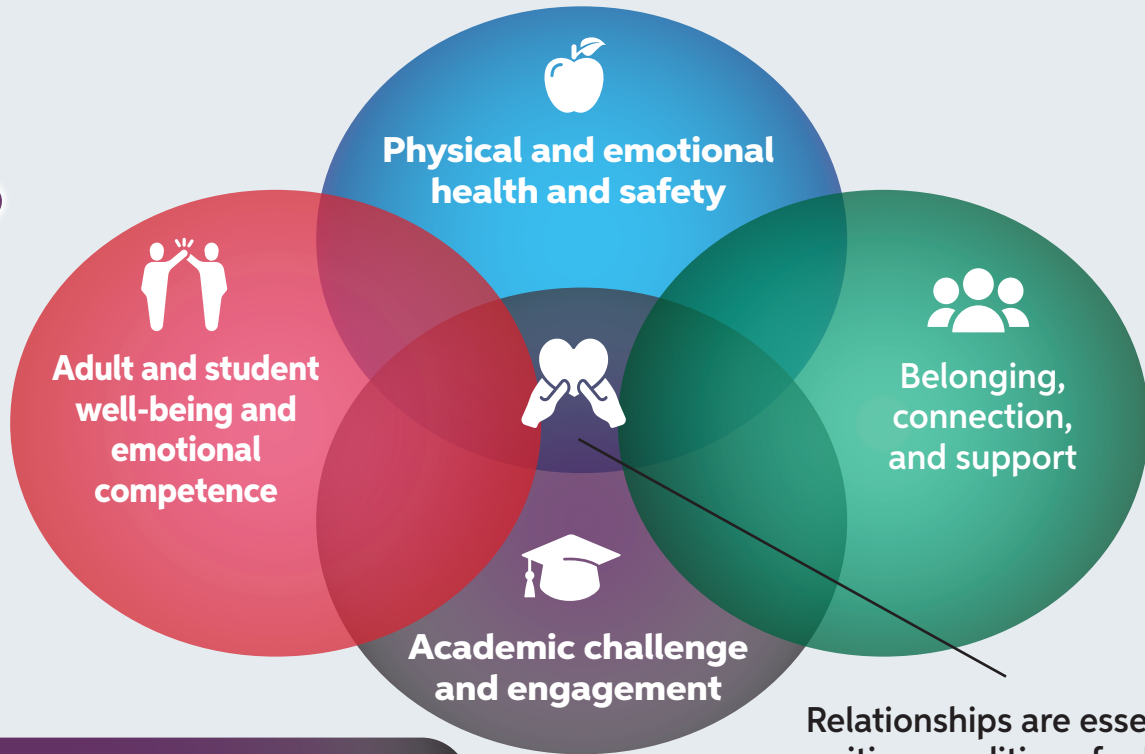
HIGH LEVELS OF NEED

- Need for additional structures and staff for strong attendance and response.



ORGANIZING ADAMS COUNTY'S RESPONSES

Rather than taking a punitive approach, we must understand the continued high levels of chronic absence reflect positive conditions for learning are missing from too many students.

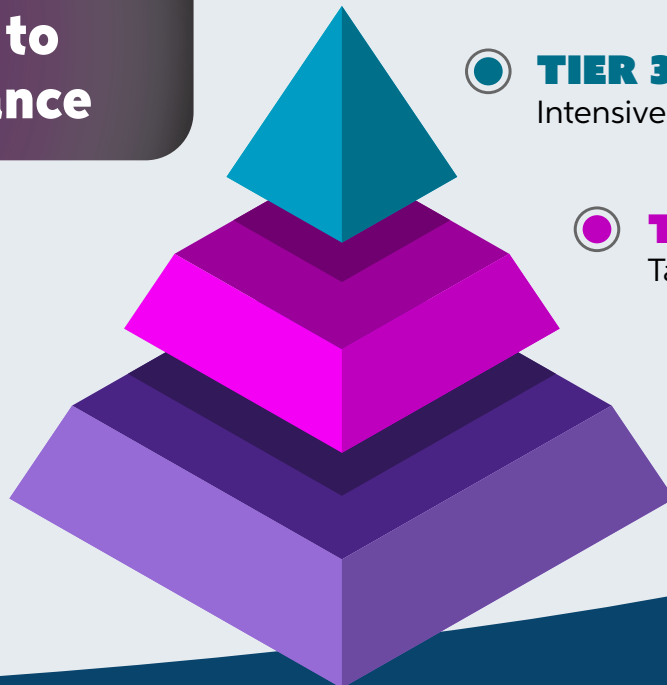


Relationships are essential to positive conditions for learning

Strong foundations and structures to support attendance



SCAN FOR MORE INFORMATION



TIER 3 -
Intensive interventions

TIER 2 -
Targeted interventions

TIER 1 -
Universal promotion and prevention

ATTENDANCE MATTERS

Collectively, we can help additional students with awareness and connection to school.

