

# Elderly population of welby

social planning  
Steffel-Johnson

Korey White, Samantha Larson, Philip Gritzmacher,  
Jennifer Walter, Mario Kuebler, Ian Swallow

# Overview

- **Why the elderly?**
  - Assessment
- **Community Outreach**
  - Methodology
  - Findings
- **Recommendations**
  - Physical and Policy changes that should happen
  - Planner's next steps
    - Who
    - Where
    - How

# AARP Assessment

elderly of  
welby

# Methodology for study areas

- Used the AARP Livable Communities: An Evaluation Guide
  - Key Categories:
    - Mobility
    - Drivability
    - Walkability
    - Safety and Security
    - Shopping
    - Health services
    - Recreation
    - Library

# What did we look for?



resources



accessibility



walkability



# AREAS STUDIED

- St. Anthony's Hospital
- Safeway at Thornton Pkwy
- Anythink Library
- Boyer's Coffee
- Assumption Catholic Church

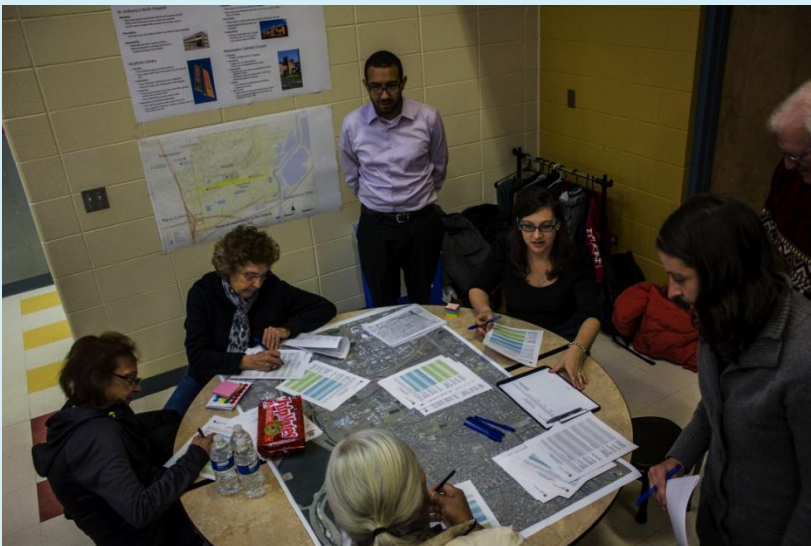


# User group research

elderly of  
welby

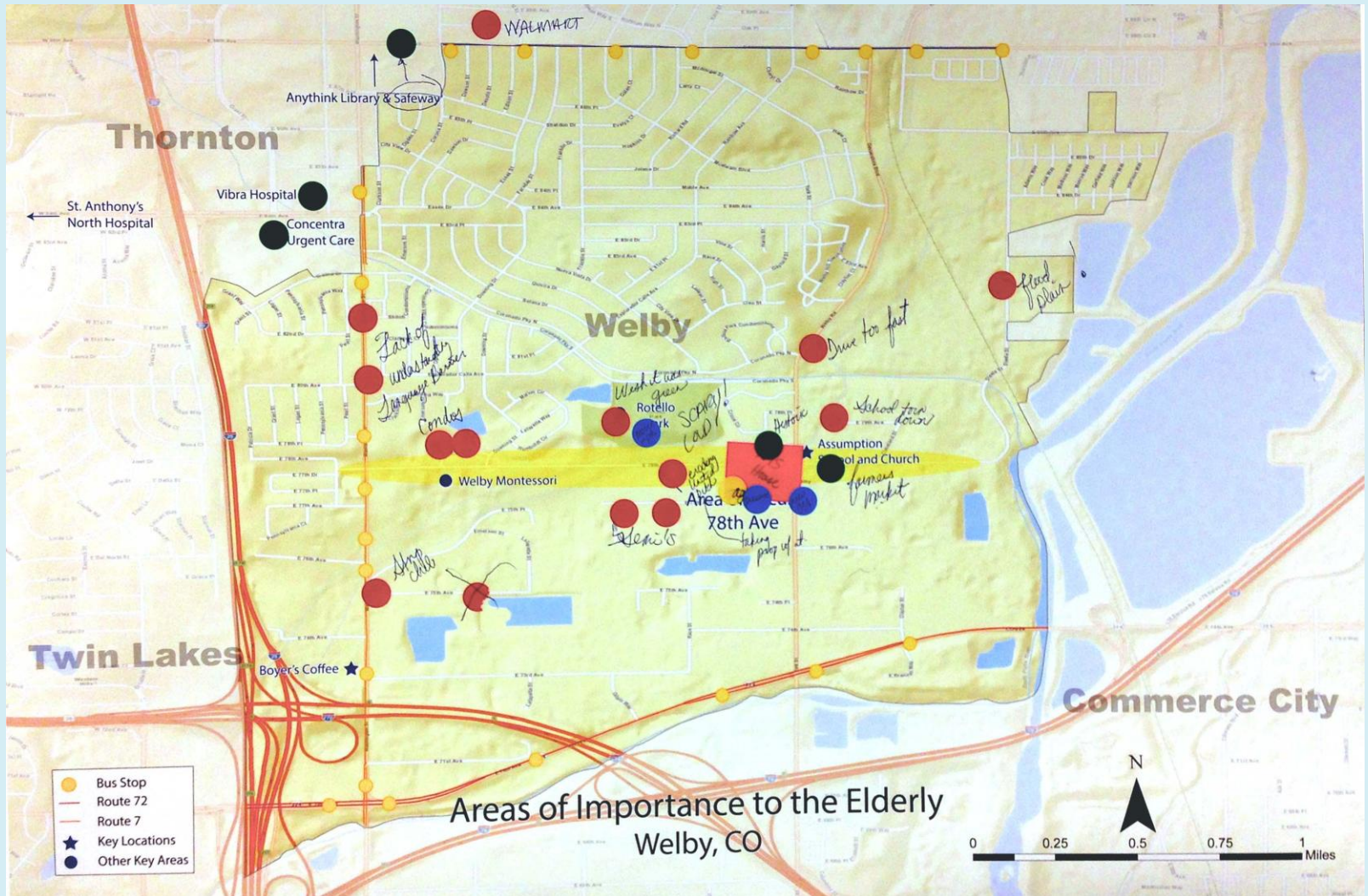
# Who we worked with

- Elderly community members at the Welby Community Meeting April 10th
- Used surveys to gather the information
  - Qualitative
  - Brief History Interviews
- Used maps and stickers to mark issues and assets





# Issues Assets map



# Research findings

elderly of  
welby

# Key issues

## ■ Assets

- Close-knit community
- Community pride in historic homes and buildings
- Location and convenience to I-25
- Platte River Trail

## ■ Problems

- Safety and Security
- Adult entertainment
- Lack of amenities i.e. Grocery Store
- Property Maintenance
- Warehouse District and heavy truck traffic

# Participants Vision for the future

## ■ Ideas

- Small town living, Big City Convenience
- Movies in the Park
- Consistent Farmer's Market at Assumption Church
- Community Programs and Activities



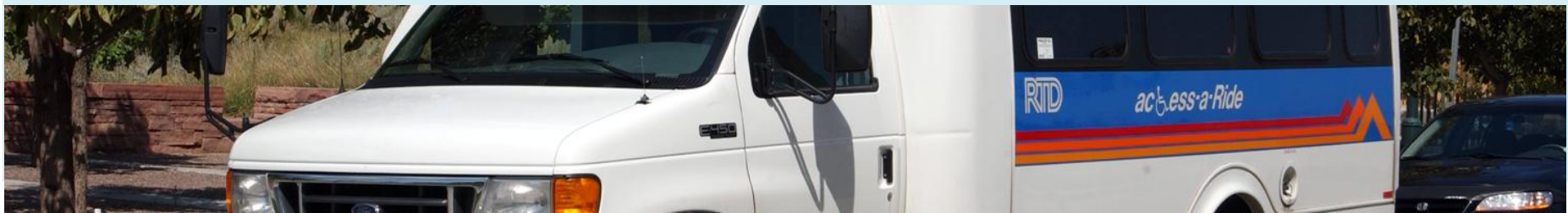
# recommendations

elderly of  
welby

# Physical/policy changes

## ■ Ideas

- Implement policies to restore and preserve historic buildings/homes
- Code enforcement
- Minor infrastructure improvement
  - lighting and sidewalks
- Planning truck routes
- Traffic calming measures in pedestrian-oriented areas
  - 78<sup>th</sup> Ave
- Outreach to A-Lift



# planner's next steps

## ■ Ideas

- Work with more elderly groups in Welby to gain insight to wants and needs
- Create open-ended interview sessions to gain the most valuable information
- Model from City of Lakewood: Citizen's Planning Committee
  - Introduction to city planning and opens a dialogue

## ■ Goals

- Get the elderly to trust the planning department
- Record historical accounts from elderly residents
  - Helps to create a register of what Welby was once like
  - Can be shown to future generations
- Diversify outreach strategies to get non-email people involved



Public now house 78th nice back went homes families well-maintained trucks zoning schools St leave sidewalks  
never farms around commissioner transportation feel playground husband population close  
Property 77th still built areas lack places great Family commercial Quiet  
Farms public home neighbors time car things children zoned taking pollution clean  
resources Aging industrial course center Assumption Community park Washington industry distribution  
area County way cars residential improved bus play walk hang go want Alpine  
Schools progress roads less downtown properties Thornton used Now don even  
knit Adams isn't also drive farming everywhere small store recreation long  
North planning lot lived School small farmers consistent music  
unincorporated shop church make distribution truck Alpine able get use everyone  
along dramatically much gardens  
dramatically



# Resources:

**Livable Communities: An Evaluation Guide. AARP Public Policy Institute. By Arizona State University Herberger Center for Design Excellence.**