



## VALUES

We are committed to:

### A POSITIVE WORK ENVIRONMENT

Providing a respectful, professional work environment that will attract, retain and motivate a workforce that effectively and efficiently serves the Adams County Community

### SERVANT LEADERSHIP

Serving the Adams County community with accountability and responsibility

### TEAMWORK

Working together on behalf of the Adams County community

### TRANSPARENCY

Engaging in open, honest, and respectful practices and communication

### CREDIBILITY

Earning the trust and respect of the Adams County community by acting with integrity and ethics in all we do

**Adams County, Colorado  
Statistical Section Index**

*This part of the Adams County comprehensive annual financial report presents detailed information as a context for understanding what the information in the financial statements, note disclosures, and required supplementary information says about the County's overall financial health.*

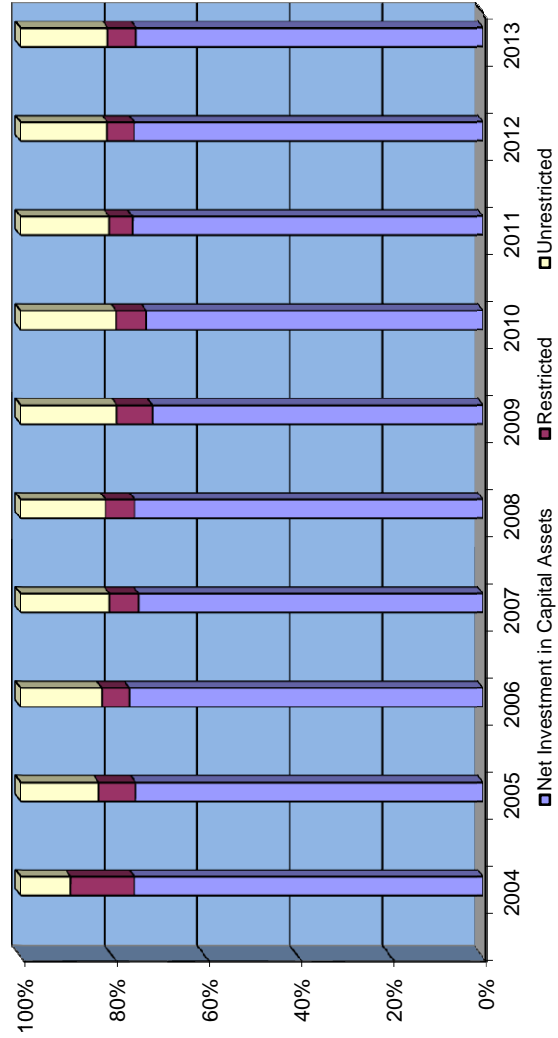
<b>Financial Trends</b>	<b>Page</b>
<i>These schedules contain trend information to help the reader understand how the County's financial performance and well-being have changed over time.</i>	
Net Position by Component	108
Changes in Net Position	109
Governmental Activities Expense Change Graphs	111
Changes in Program & General Revenue Graph	113
Fund Balances, Governmental Funds	114
Changes in Fund Balances, Governmental Funds	115
Changes in Fund Balances, Governmental Funds Graphs	116
<b>Revenue Capacity</b>	
<i>These schedules contain information to help the reader assess the County's most significant sources of revenue.</i>	
Assessed/Actual Value of Taxable Property	117
Property Tax Levies and Collections	118
Principal Property Tax Payers	119
Direct and Overlapping Property Tax Rates	120
<b>Debt Capacity</b>	
<i>These schedules contain information to help the reader assess the affordability of the County's current level of debt and the county's ability to issue debt in the future.</i>	
Ratio of Outstanding Debt by Type	121
Computation of Direct, Overlapping and Underlying Long-Term Debt	122
Legal Debt Margin Information	124
<b>Demographic and Economic Information</b>	
<i>These schedules offer demographic and economic indicators to help the reader understand the environment within which the County's financial activities take place.</i>	
Demographic and Economic Statistics	125
Principal Employers	126
<b>Operating Information</b>	
<i>These schedules contain information regarding types of assets by function/department and the number of employees in various job categories.</i>	
Capital Asset Statistics by Function/Program	127
Full-Time Equivalent County Employees by Function/Program	128

This page is intentionally left blank

Adams County, Colorado  
Net Position by Component  
Last Ten Years

	2004	2005	2006	2007	2008	2009	2010	2011	2012	2013
<b>Governmental Activities</b>										
Net Investment in Capital Assets	\$ 474,873,142	\$ 495,306,316	\$ 534,593,275	\$ 536,994,805	\$ 554,481,895	\$ 534,982,272	\$ 557,397,767	\$ 592,522,933	\$ 596,555,287	\$ 593,574,188
Restricted	88,053,528	53,225,936	42,328,514	46,405,245	46,812,777	58,041,779	50,731,051	39,750,571	46,557,791	49,202,652
Unrestricted	67,507,247	111,080,386	122,288,680	137,797,761	134,148,061	154,930,749	157,176,026	148,150,452	146,459,139	147,915,202
Total governmental activities net position	\$ 630,433,917	\$ 659,612,638	\$ 699,210,469	\$ 721,197,811	\$ 735,442,733	\$ 747,954,800	\$ 765,304,844	\$ 780,423,956	\$ 789,572,217	\$ 790,692,042
<b>Business-type Activities</b>										
Net Investment in Capital Assets	\$ 8,184,808	\$ 8,153,716	\$ 8,052,459	\$ 8,135,188	\$ 8,200,054	\$ 8,083,593	\$ 7,954,054	\$ 7,738,452	\$ 7,778,089	\$ 9,332,133
Unrestricted	1,809,515	2,221,705	2,756,160	2,863,787	2,944,443	3,175,497	3,400,335	3,630,896	3,794,813	3,546,648
Total business-type activities net position	\$ 9,994,323	\$ 10,375,421	\$ 10,808,619	\$ 10,998,975	\$ 11,144,497	\$ 11,259,090	\$ 11,354,389	\$ 11,369,348	\$ 11,572,902	\$ 12,878,781
<b>Total Primary Government</b>										
Net Investment in Capital Assets	\$ 483,057,950	\$ 503,460,032	\$ 542,645,734	\$ 545,129,993	\$ 562,681,949	\$ 543,065,865	\$ 565,351,821	\$ 600,261,385	\$ 604,333,376	\$ 602,906,321
Restricted	88,053,528	53,225,936	42,328,514	46,405,245	46,812,777	58,041,779	50,731,051	39,750,571	46,557,791	49,202,652
Unrestricted	69,316,762	113,302,091	125,044,840	140,661,548	137,092,504	158,106,246	160,576,361	151,781,348	150,253,952	151,461,850
Total primary government net position	\$ 640,428,240	\$ 669,988,059	\$ 710,019,088	\$ 732,196,786	\$ 746,587,230	\$ 759,213,890	\$ 776,659,233	\$ 791,793,304	\$ 801,145,119	\$ 803,570,823

**Percentage of Net Position by Component**

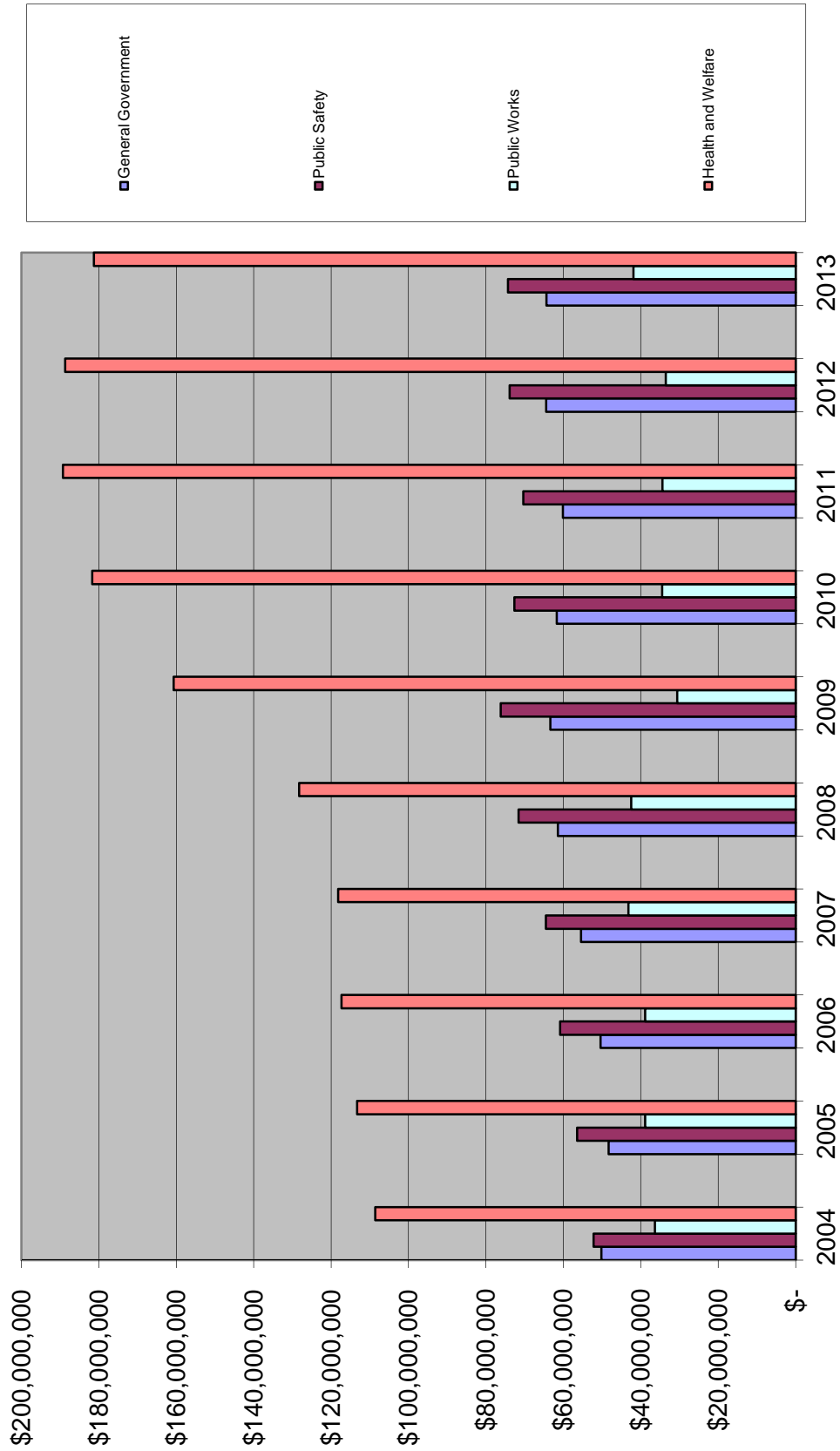


**Adams County Colorado  
Changes in Net Position  
Last Ten Fiscal Years**

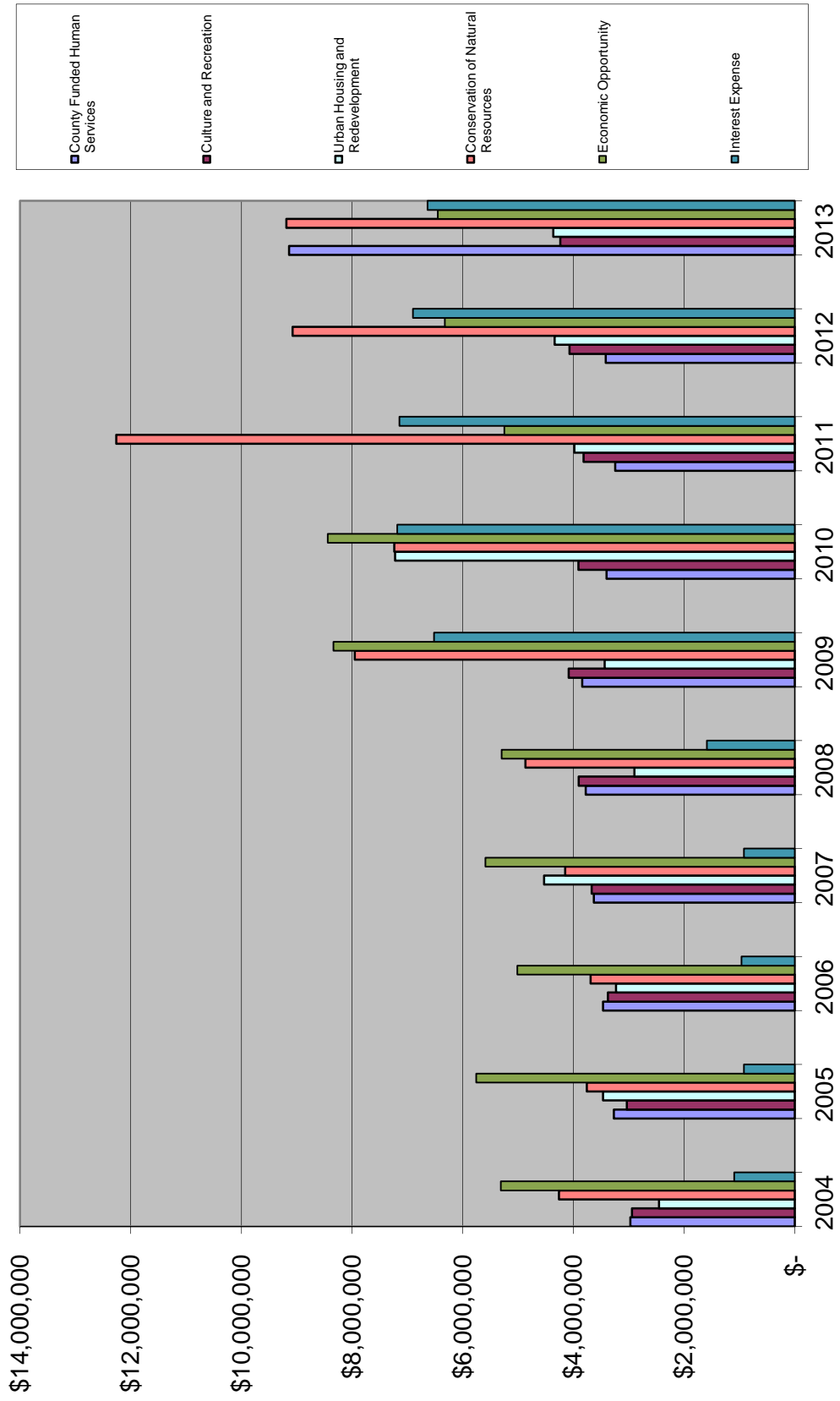
	2004	2005	2006	2007	2008	2009	2010	2011	2012	2013
<b>Expenses</b>										
<b>Governmental Activities</b>										
General Government	\$ 50,151,849	\$ 48,305,546	\$ 50,389,174	\$ 55,429,386	\$ 61,408,120	\$ 63,382,231	\$ 61,728,753	\$ 60,112,427	\$ 64,432,076	\$ 64,364,517
Public Safety	52,225,075	56,423,552	60,814,606	64,528,882	71,585,432	76,201,817	72,666,075	70,374,242	73,890,995	74,297,420
County Funded Human Services	2,969,393	3,267,211	3,464,240	3,629,566	3,777,147	3,842,110	3,398,031	3,244,279	3,414,463	9,138,011
Public Works	36,351,441	38,882,542	38,860,660	43,161,397	42,447,761	30,553,717	34,492,821	34,414,275	33,551,692	41,891,634
Culture and Recreation	2,940,434	3,032,133	3,374,562	3,669,852	3,903,715	4,086,651	3,906,242	3,815,451	4,068,729	4,235,097
Health and Welfare	108,597,884	113,316,811	117,325,278	118,151,381	128,280,011	160,687,705	181,712,150	189,256,037	188,698,818	181,268,279
Urban Housing and Redevelopment	2,451,400	3,463,570	3,227,952	4,528,589	2,897,032	3,437,056	7,220,801	3,983,241	4,340,822	4,362,880
Conservation of Natural Resources	4,262,388	3,756,320	3,686,796	4,150,045	4,868,147	7,952,345	7,235,950	12,258,504	9,074,943	9,185,737
Economic Opportunity	5,313,416	5,757,375	5,014,885	5,592,049	5,297,734	8,335,699	8,436,630	5,249,905	6,323,042	6,451,001
Interest Expense	1,092,976	919,671	963,590	919,108	1,589,421	6,519,982	7,184,199	7,141,671	6,898,470	6,633,838
Total governmental activities expense	266,356,256	277,124,731	287,121,743	303,760,255	326,054,520	364,999,313	387,981,652	389,850,032	394,694,050	401,828,414
<b>Business-type Activities</b>										
Storm Water			2,078,325	2,300,914	2,484,609	2,407,548	2,392,530	2,472,748	2,498,663	550,414
Golf Course	1,987,316	2,086,919	2,078,325	2,300,914	2,484,609	2,407,548	2,392,530	2,472,748	2,498,663	2,638,135
Total business-type activities expense			2,078,325	2,300,914	2,484,609	2,407,548	2,392,530	2,472,748	2,498,663	3,188,549
<b>Total primary government expense</b>	\$ 268,343,572	\$ 279,211,650	\$ 289,200,068	\$ 306,061,169	\$ 328,539,129	\$ 367,406,861	\$ 390,374,182	\$ 392,322,780	\$ 397,192,713	\$ 405,016,963
<b>Program Revenues</b>										
<b>Governmental Activities</b>										
Fines & Charges for Services										
General Government	\$ 14,575,087	\$ 15,545,725	\$ 16,237,322	\$ 17,156,815	\$ 14,828,419	\$ 16,709,196	\$ 16,171,139	\$ 16,501,360	\$ 17,778,143	\$ 16,918,354
Public Safety	2,988,733	4,641,285	4,611,018	4,377,538	5,698,388	5,179,857	5,230,810	5,543,679	5,683,799	6,095,173
Public Works	2,983,856	2,616,752	2,454,320	1,855,448	1,129,707	1,167,755	1,530,828	1,170,586	1,300,403	2,435,131
Culture & Recreation	602,824	617,769	666,705	609,389	723,522	703,766	817,600	742,717	755,843	724,147
Health & Welfare	4,435		350							37,586
Conservation of Natural Resources		56,556	60,916	77,080		41,453	76,626	69,245	25,524	18,508
Economic Opportunity	45,859	72,263	65,258	75,988	52,149	46,201			45,301	
Total Charges for Services	21,200,794	23,550,350	24,095,889	24,152,258	22,432,185	23,848,228	23,827,003	24,027,587	25,589,013	26,228,899
Operating Grants and Contributions										
General Government	2,550,100	1,269,572	2,189,297	1,873,936	2,116,926	1,056,510	2,558,195	2,114,669	2,582,257	2,173,598
Public Safety	5,125,222	4,570,813	4,669,403	5,137,024	5,427,130	6,852,619	6,364,326	6,354,583	6,503,497	6,589,829
Public Works	6,860,833	6,078,488	8,600,237	7,490,684	6,540,109	7,608,658	7,898,145	7,867,990	8,821,239	8,170,146
Culture & Recreation	32,126	24,400								45,000
Health & Welfare	96,815,651	106,440,755	107,772,760	106,844,065	115,792,402	144,947,269	167,856,820	173,872,725	172,599,784	172,547,787
Urban Housing & Redevelopment	2,186,042	3,195,071	3,089,239	4,368,235	2,789,881	3,256,287	6,908,889	4,305,932	4,451,511	4,835,219
Conservation of Natural Resources	753,335	1,225,858	1,240,378	970,542	636,679	3,535,485	567,395	1,184,090	377,732	739,892
Economic Opportunity	5,157,622	5,528,502	4,750,854	5,338,893	5,058,453	8,017,831	8,378,659	5,063,181	6,033,934	6,280,988
Total Operating Grants and Contributions	119,480,931	128,333,459	132,312,168	132,023,379	138,361,580	175,274,659	200,532,429	200,763,170	201,369,954	201,382,459
<b>Capital Grants and Contributions</b>										
General Government	200	13,070	456,758	451,910	53,458		241,108	836,512		274,727
Public Safety	98,173		635,634	14,500				52,921		
Public Works	14,544,581	8,447,430	9,648,528	4,934,395	3,631,678	8,869,245	11,518,693	4,659,639	1,743,430	3,207,537
Health and Welfare							53,737			
Urban Housing and Redevelopment									430,099	
Conservation of Natural Resources	1,604,638				625,000		849,000	7,494,134	3,495,003	1,609,494
Total Capital Grants and Contributions	16,247,592	8,460,500	10,740,920	5,400,805	4,310,136	8,869,245	12,662,538	13,043,206	5,668,532	5,091,758
<b>Total governmental activities program revenue</b>	156,929,317	160,344,309	167,148,977	161,576,442	165,103,901	207,992,132	237,021,970	237,833,963	232,627,499	232,703,116

	2004	2005	2006	2007	2008	2009	2010	2011	2012	2013
<b>Business-type Activity</b>										
Storm Water- Charges for Services	2,572,740	2,748,925	2,731,697	2,688,802	2,902,979	2,848,361	2,820,454	2,823,117	3,035,780	2,030,437
Golf Course- Charges for Services	2,572,740	2,748,925	2,731,697	2,688,802	2,902,979	2,848,361	2,820,454	2,823,117	3,035,780	2,814,234
Total business-type activities program revenue	\$ 159,502,057	\$ 163,093,234	\$ 169,880,674	\$ 164,265,244	\$ 168,006,880	\$ 210,840,493	\$ 239,842,424	\$ 240,657,080	\$ 235,663,279	\$ 237,547,787
Total primary government program revenue										
<b>Net (Expense)/Revenue</b>										
Governmental Activities	\$ (109,426,939)	\$ (116,780,422)	\$ (119,972,766)	\$ (142,183,813)	\$ (160,950,619)	\$ (157,007,181)	\$ (150,959,682)	\$ (152,016,069)	\$ (162,066,551)	\$ (169,125,298)
Business-type Activity	585,424	662,006	653,372	387,888	418,370	440,813	427,924	350,369	537,117	1,656,122
Total primary government net (expense)/revenue	\$ (108,841,515)	\$ (116,118,416)	\$ (119,319,394)	\$ (141,795,925)	\$ (160,532,249)	\$ (156,566,368)	\$ (150,531,758)	\$ (151,665,700)	\$ (161,529,434)	\$ (167,469,176)
<b>General Revenues and Other Changes in Net Position</b>										
Governmental Activities										
Taxes										
Property Taxes	\$ 93,774,948	\$ 98,285,280	\$ 105,568,720	\$ 110,413,882	\$ 119,346,965	\$ 121,842,329	\$ 120,948,144	\$ 120,000,652	\$ 118,469,008	\$ 120,606,411
Sales Taxes	23,930,139	26,118,233	27,235,502	30,165,614	30,494,275	27,672,357	29,037,709	30,981,723	34,520,050	37,352,401
Specific Ownership Taxes	10,348,128	10,287,744	10,816,361	10,591,852	10,193,583	9,064,549	8,211,138	7,932,610	8,390,103	9,232,003
Other Taxes	378,521	361,249	419,199	398,255	419,766	664,877	380,238	415,962	509,974	464,794
Unrestricted Investment Earnings	3,425,198	6,642,999	10,318,270	12,244,860	8,766,805	4,411,282	3,487,202	3,038,344	2,437,223	(1,628,626)
Gain/Loss on Sale of Capital Assets	-	-	-	-	457,605	-	799,263	-	23,347	18,269
Miscellaneous	3,486,069	3,923,638	4,872,545	4,231,536	5,741,602	5,523,854	5,106,032	4,169,552	6,525,107	5,151,514
Special Items	-	-	-	(4,214,844)	-	-	-	-	-	-
Loss on Disposal of Capital Assets	-	-	-	-	-	-	-	-	-	-
Transfers	340,000	340,000	340,000	340,000	340,000	340,000	340,000	340,000	340,000	340,000
Total Governmental Activities	135,683,003	145,959,143	159,570,597	164,171,155	175,760,601	169,519,248	168,309,726	166,878,843	171,214,812	171,536,766
Business-type Activities										
Unrestricted Investment Earning	21,994	59,092	119,826	142,468	67,152	10,022	7,375	4,590	8,518	4,977
Gain/Loss on Sale of Capital Assets	(340,000)	(340,000)	(340,000)	(340,000)	(340,000)	(340,000)	(340,000)	(340,000)	(2,081)	(15,220)
Transfers	(318,006)	(280,908)	(220,174)	(197,532)	(272,848)	(326,220)	(332,625)	(335,410)	(333,563)	(350,243)
Total Business-type Activities	\$ 135,364,997	\$ 145,678,235	\$ 159,350,423	\$ 163,973,623	\$ 175,487,753	\$ 169,193,028	\$ 167,977,101	\$ 166,543,433	\$ 170,881,249	\$ 171,186,523
Total Primary Government General Revenues										
<b>Change in Net Position</b>										
Governmental Activities	\$ 26,256,064	\$ 29,178,721	\$ 39,597,831	\$ 21,987,342	\$ 14,809,982	\$ 12,512,067	\$ 17,350,044	\$ 14,862,774	\$ 9,148,261	\$ 2,411,468
Business-type Activities	267,418	381,098	433,198	190,356	145,522	114,593	95,299	14,959	203,554	1,305,879
Total Primary Government	\$ 26,523,482	\$ 29,559,819	\$ 40,031,029	\$ 22,177,698	\$ 14,955,504	\$ 12,626,660	\$ 17,445,343	\$ 14,877,733	\$ 9,351,815	\$ 3,717,347

# Governmental Activities Expense Changes

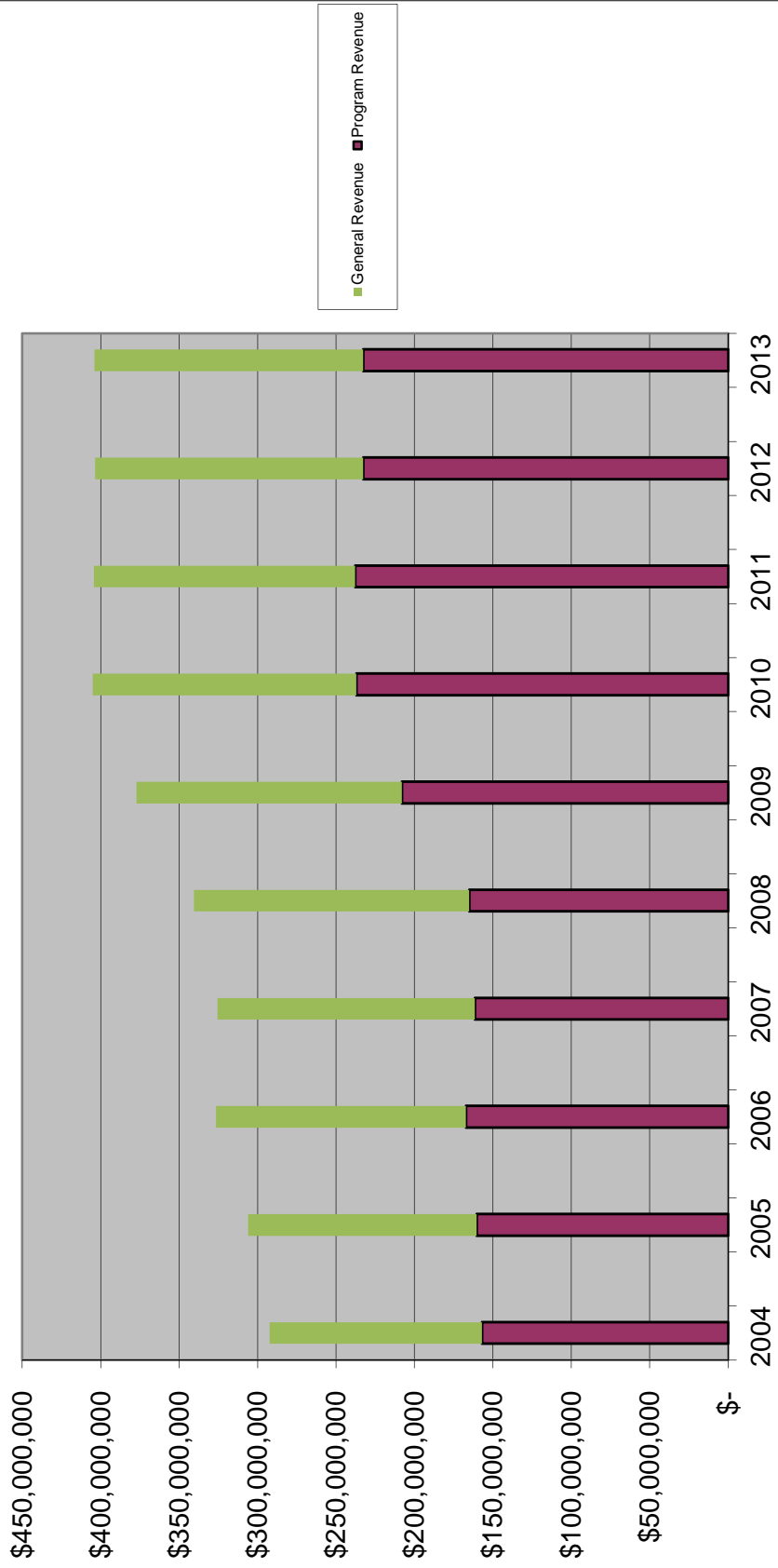


# Governmental Activities Expense Changes





## Changes in Program & General Revenues



Adams County, Colorado  
Fund Balances, Governmental Funds  
Last Ten Years

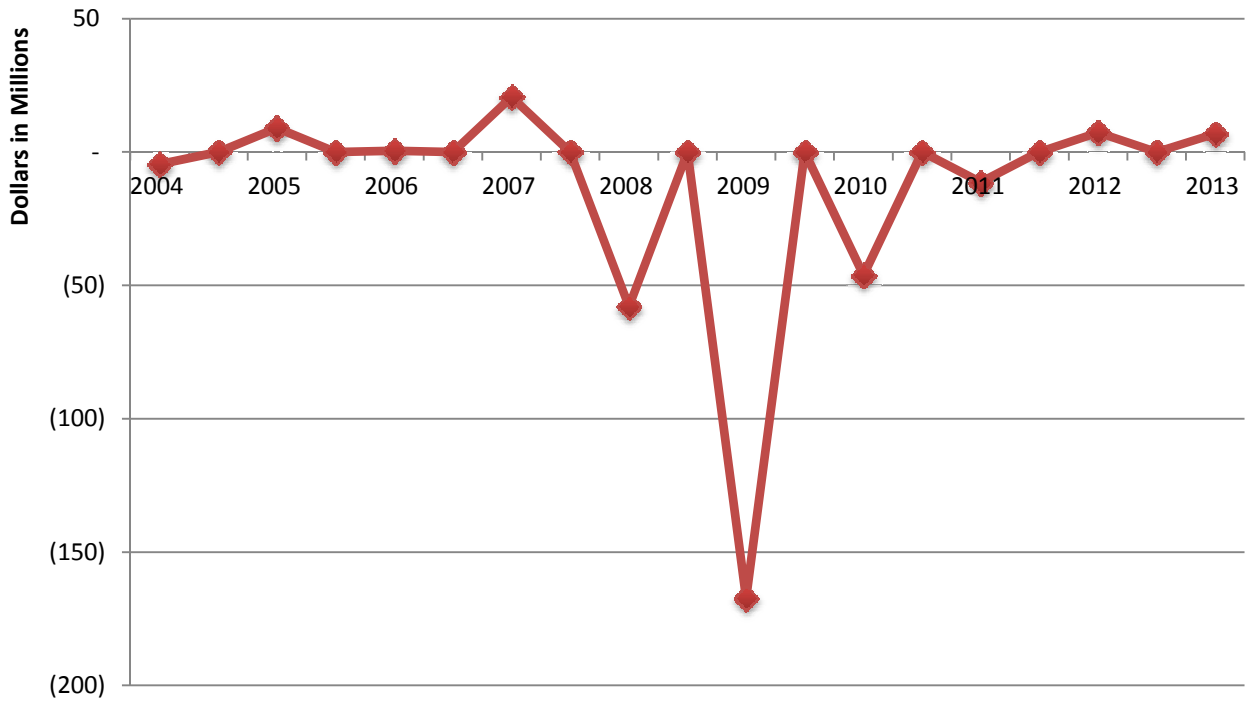
General Fund	2004	2005	2006	2007	2008	2009	2010	2011	2012	2013
Restricted	\$ -	\$ -	\$ -	\$ -	\$ -	\$ 11,064,500	\$ 11,492,899	\$ 17,249,860	\$ 17,468,266	\$ 17,438,298
Committed	-	-	-	-	-	-	-	38,548,895	39,850,069	40,001,844
Assigned	-	-	-	-	-	-	-	157,389	207,750	196,401
Unassigned	63,572,141	71,217,307	82,074,695	95,414,250	95,084,429	93,367,951	93,293,454	62,304,685	60,123,396	54,886,069
Total General fund	\$ 63,572,141	\$ 71,217,307	\$ 82,074,695	\$ 95,414,250	\$ 95,084,429	\$ 104,432,451	\$ 104,786,353	\$ 118,260,829	\$ 117,649,481	\$ 112,522,612
<b>All Other Governmental Funds</b>										
Restricted	\$ 5,755,830	\$ 5,354,606	\$ 9,222,061	\$ 9,347,219	\$ 9,652,138	\$ 10,790,582	\$ 10,029,217	\$ 33,565,211	\$ 40,154,025	\$ 42,828,854
Assigned, reported in:										
Major funds	43,272,518	46,061,332	36,570,272	38,477,055	40,592,795	44,040,554	43,215,574	30,373,767	32,226,470	38,248,453
Special revenue funds	18,077,323	21,476,468	21,532,411	30,629,297	33,473,483	35,855,475	37,418,027	8,622,543	6,261,632	8,883,906
Capital Project funds	22,969,802	18,189,410	12,312,409	8,034,657	17,427,501	44,727,126	16,570,438	12,966,286	15,219,474	16,995,878
Total all other governmental funds	\$ 90,075,473	\$ 91,081,816	\$ 79,637,153	\$ 86,488,228	\$ 101,145,917	\$ 135,413,737	\$ 107,233,256	\$ 85,527,807	\$ 93,861,601	\$ 106,957,091
Total General & All Other Governmental Funds	\$ 153,647,614	\$ 162,299,123	\$ 161,711,848	\$ 181,902,478	\$ 196,230,346	\$ 239,846,188	\$ 212,019,609	\$ 203,788,636	\$ 211,511,082	\$ 219,479,703

Note: Fund Balance categories changed as of 1/1/2011 pursuant to GASB 54. Data for retroactive categorizing not available.

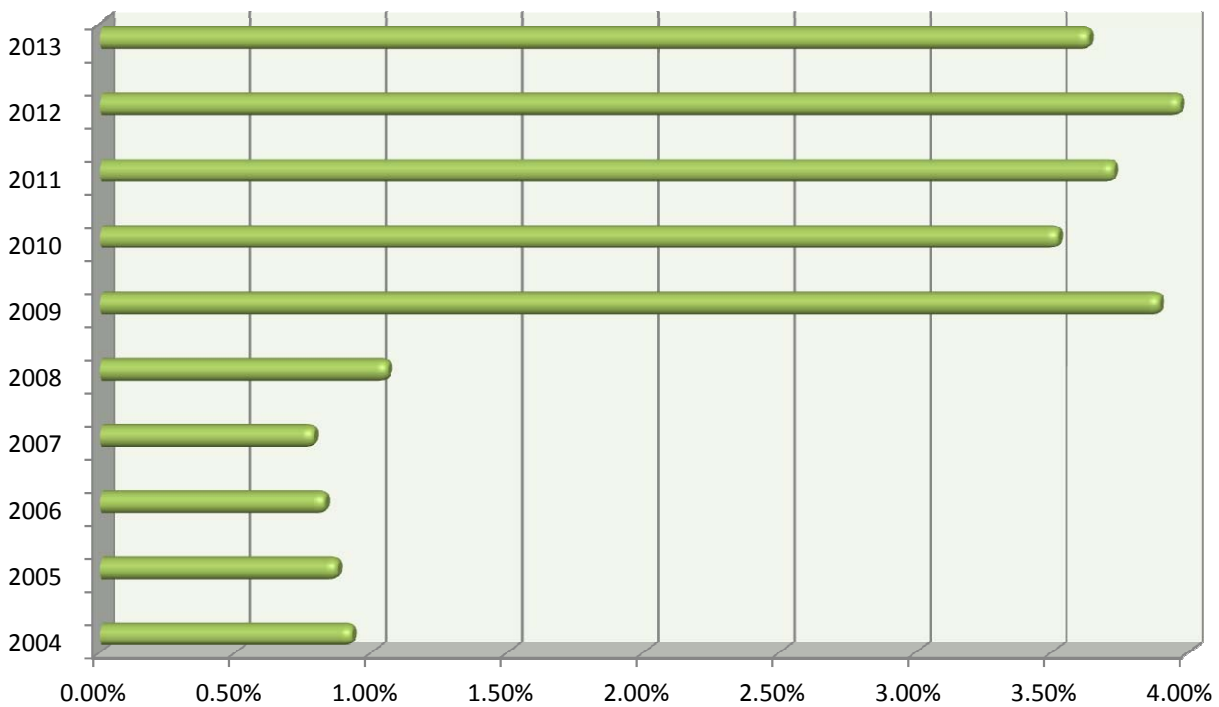
Adams County, Colorado  
Changes in Fund Balances, Governmental Funds  
Last Ten Years

	2004	2005	2006	2007	2008	2009	2010	2011	2012	2013
<b>Revenues:</b>										
Taxes	\$ 128,053,215	\$ 135,052,506	\$ 144,039,782	\$ 151,569,603	\$ 160,454,589	\$ 159,244,112	\$ 158,577,229	\$ 159,330,946	\$ 161,889,135	\$ 167,655,609
Licenses and Permits	1,343,771	1,278,383	1,337,706	1,153,953	680,665	692,531	1,094,570	753,458	777,015	1,412,564
Intergovernmental	119,859,452	128,333,459	132,312,168	132,023,379	138,361,580	185,244,245	208,106,791	207,483,230	202,003,859	202,544,757
Program Income	-	-	-	-	-	-	-	1,153,693	193,882	1,541,146
Charges for Services	19,857,023	22,271,967	22,758,183	22,998,305	21,751,520	22,055,356	22,732,433	23,274,129	24,811,998	24,816,335
Interest Earnings	3,425,198	6,642,999	10,318,270	12,244,860	8,766,805	4,411,282	3,487,202	3,038,344	2,437,223	(1,628,626)
Miscellaneous	3,862,174	3,928,138	4,877,045	4,236,036	6,284,069	6,839,604	5,059,405	4,226,509	6,478,480	5,136,715
Total Revenues	276,400,833	297,507,452	315,643,154	324,226,136	336,299,228	378,487,130	399,057,630	399,260,309	398,591,592	401,478,500
<b>Expenditures:</b>										
General Government	45,988,101	46,278,182	48,377,182	52,229,232	57,516,054	60,022,849	60,012,382	54,911,702	57,605,004	57,464,384
Public Works	30,068,876	31,671,119	33,146,782	36,689,909	35,263,521	24,283,840	27,740,860	25,084,133	25,212,451	33,513,222
Public Safety	47,123,634	51,423,724	56,335,493	59,744,019	66,227,502	70,721,636	66,856,170	65,222,597	66,354,652	67,400,439
County Funded Human Services	2,969,393	3,267,211	3,464,240	3,629,566	3,777,147	3,842,110	3,398,031	3,244,279	3,414,463	3,373,199
Health and Welfare	107,898,233	112,686,336	116,434,773	116,900,553	126,982,887	159,245,854	180,836,695	188,042,147	187,072,779	185,618,415
Culture and Recreation	2,518,499	2,586,029	3,006,940	3,258,609	3,430,407	3,425,260	3,340,087	3,220,777	3,402,746	3,520,402
Economic Opportunity	5,201,006	5,690,464	4,941,304	5,531,616	5,248,977	8,202,896	8,361,926	5,120,135	6,155,373	6,242,538
Urban Housing/Redevelopment	2,427,225	3,454,746	3,218,874	4,517,205	2,884,458	3,425,126	7,212,069	3,973,099	4,333,582	4,350,145
Conservation of Nation Resources	4,287,091	3,733,965	3,633,261	3,989,670	4,839,595	7,872,237	7,153,025	12,119,294	8,780,062	8,987,564
Capital Outlay	30,115,273	25,409,458	40,326,430	14,839,548	84,803,505	190,968,890	67,038,805	35,809,762	13,936,789	10,278,190
Debt Service										
Principal	1,092,976	1,260,000	1,300,000	1,345,000	1,478,061	6,563,211	6,075,143	6,796,777	8,043,300	7,304,914
Interest	1,225,000	1,029,001	968,994	918,526	1,395,000	6,221,600	7,117,260	7,158,834	6,921,292	6,655,097
Issuance Costs	-	-	-	-	391,384	1,023,216	119,184	-	-	-
Total Expenditures	280,915,307	288,490,235	315,154,273	303,593,453	394,238,498	545,818,725	445,261,637	410,703,536	391,232,493	394,708,509
Excess of revenues over (under) expenditures	(4,514,474)	9,017,217	488,881	20,632,683	(57,939,270)	(167,331,595)	(46,204,007)	(11,443,227)	7,359,099	6,769,991
<b>Other Financing Sources (Uses)</b>										
Transfers In	12,377,357	9,439,698	12,778,296	5,867,033	8,612,315	23,811,811	12,800,101	15,088,566	15,675,558	17,960,497
Transfers Out	(13,351,399)	(9,906,355)	(13,572,943)	(6,283,150)	(9,088,017)	(23,487,507)	(12,460,101)	(14,132,580)	(15,335,558)	(16,780,136)
Issuance of Debt	-	-	-	-	-	-	-	1,999,930	-	-
Proceeds Certificates of Participation	-	-	-	-	35,000,000	110,645,000	15,500,000	-	-	-
Proceeds from Sale of Assets	-	-	-	-	35,000,000	105,000,000	2,537,428	-	23,347	18,269
Payment to Escrow Agent	-	-	-	-	(5,581,171)	-	-	-	-	-
Premium on Bonds	-	-	-	-	-	641,423	-	-	-	-
Total other financing sources (uses)	(974,042)	(466,657)	(794,647)	(416,117)	69,524,298	211,029,556	18,377,428	2,955,916	363,347	1,198,630
<b>Net Change in Fund Balances</b>	<b>\$ (5,488,516)</b>	<b>\$ 8,550,560</b>	<b>\$ (305,766)</b>	<b>\$ 20,216,566</b>	<b>\$ 11,585,028</b>	<b>\$ 43,697,961</b>	<b>\$ (27,826,579)</b>	<b>\$ (8,487,311)</b>	<b>\$ 7,722,446</b>	<b>\$ 7,968,621</b>
Debt service as a percentage of noncapital expenditures	0.92%	0.87%	0.83%	0.78%	1.05%	3.89%	3.52%	3.72%	3.97%	3.63%

## Revenues Over/Under Expenditures



## Debt as a Percentage of Expenditures



**Adams County, Colorado**  
**Assessed/Actual Value of Taxable Property(1)**  
**Last Ten Years**

<b>Year Ended 12/31</b>	<b>Residential Property</b>	<b>Commercial Property</b>	<b>Industrial Property</b>	<b>Vacant Land</b>	<b>Agricultural Acre Valuation</b>	<b>Natural Resources</b>	<b>State Assessed Property</b>	<b>Tax-Exempt Property</b>	<b>Total Taxable Assessed Value</b>	<b>Total Direct Tax Rate(2)</b>
2004	1,817,164,600	1,133,324,020	172,585,680	163,125,320	21,377,270	47,395,610	304,244,440	433,574,640	3,659,216,940	26.903
2005	1,996,105,110	1,211,307,330	179,284,260	189,052,140	18,299,200	57,591,930	309,937,150	485,896,500	3,961,577,120	26.804
2006	2,078,292,790	1,253,123,650	189,591,830	191,121,120	18,144,350	68,024,410	301,926,570	552,668,600	4,100,224,720	26.974
2007	2,133,545,890	1,413,864,230	283,101,710	206,593,000	18,542,410	65,225,140	316,986,840	753,675,810	4,437,859,220	26.899
2008	2,173,141,540	1,480,135,780	314,806,400	186,478,600	18,565,270	58,557,700	323,369,960	955,028,920	4,555,055,250	26.809
2009	2,000,551,940	1,568,191,330	342,273,510	164,563,270	18,996,430	88,818,250	346,477,300	969,669,170	4,529,872,030	26.824
2010	2,010,666,990	1,572,491,250	311,982,840	150,930,860	19,222,130	46,346,980	375,729,210	1,063,467,690	4,487,370,260	26.883
2011	1,962,487,880	1,567,274,910	294,197,630	126,806,330	21,378,430	60,736,530	413,097,550	1,278,225,880	4,445,979,260	26.806
2012	1,975,519,290	1,584,428,650	311,321,490	120,063,400	21,515,790	69,716,900	441,560,540	1,289,313,230	4,524,126,060	26.903
2013	1,967,829,680	1,677,906,190	306,265,940	123,696,390	25,047,890	78,886,450	470,236,880	1,308,737,380	4,649,869,420	26.815

(1) The County assesses property frequently; therefore assessed and actual are substantially equal.

(2) Tax rate is per \$1,000 of assessed value

Source: Adams County Assessor's Office

**Adams County, Colorado**  
**Property Tax Levies and Collections**  
**Last Ten Years**

<b>Fiscal Year Ended December 31</b>	<b>Taxes Levied for Collection in the Fiscal Year</b>	<b>Current Collections</b>		<b>Collections in Subsequent Years (1)</b>	<b>Total Collections to Date</b>	
		<b>Amount</b>	<b>Percentage of Levy</b>		<b>Total Taxes Collected</b>	<b>Percentage of Levy</b>
2004	94,021,777	93,875,226	99.84%	125,933	94,001,159	99.98%
2005	98,443,913	97,912,755	99.46%	164,891	98,077,646	99.63%
2006	106,186,113	105,414,152	99.27%	140,706	105,554,858	99.41%
2007	110,599,462	109,940,545	99.40%	82,852	110,023,397	99.48%
2008	119,373,976	119,152,400	99.81%	147,481	119,299,881	99.94%
2009	122,116,476	121,547,279	99.53%	270,992	121,818,271	99.76%
2010	121,507,945	120,560,734	99.22%	213,814	120,774,548	99.40%
2011	120,633,975	119,783,006	99.29%	172,720	119,955,726	99.44%
2012	119,178,920	118,077,276	99.08%	173,295	118,250,571	99.22%
2013	121,712,563	120,712,476	99.18%	-	120,712,476	99.18%

(1) Property taxes are collected in the fiscal year following the year levied, for example taxes levied at the end of 2012 in the amount of \$121,712,563 will be collected in 2013

Source: Adams County Assessor, Adams County Treasurer

Note: The information in this schedule relates to the County's own property tax levies, and does not include those it collects on behalf of other governments.

**Adams County, Colorado  
Principal Property Tax Payers (1)  
Current Year and Nine Years Ago**

<b>Taxpayer</b>	<b>2013</b>			<b>2004</b>		
	<b>Taxable Assessed Value</b>	<b>Rank</b>	<b>Percentage of Total County Taxable Assessed Value</b>	<b>Taxable Assessed Value</b>	<b>Rank</b>	<b>Percentage of Total County Taxable Assessed Value</b>
Xcel Energy Co (Public Service Co)	\$ 125,922,410	2	2.71%	109,696,650	1	3.00%
Suncor Energy, USA, Inc	143,996,240	1	3.10%	19,867,230	6	
Qwest Corporation	78,760,700	3	1.69%	55,544,800	2	1.52%
Colorado Interstate Gas Co.	53,532,200	5	1.15%	12,318,800	10	0.34%
Verizon Wireless, LLC(Cellco Prtnrshp)	22,506,500	8	0.48%	12,609,800	8	0.34%
Kerr-McGee Gathering LLC	23,399,220	6	0.50%			
Tri-State Generation	21,679,720	9	0.47%	15,354,300	7	0.42%
Denver/Rocky Mtn Newspaper			0.00%			0.00%
Wal-Mart Real Estate Business Trust	19,808,560	10	0.43%			
United Power, Inc	22,885,900	7	0.49%			
Public Servie Co of Colorado	76,121,650	4	1.64%			
Avaya, Inc				20,880,000	5	0.57%
AT & T Communications				24,413,600	3	0.67%
Avaya Equipment Leasing				12,589,030	9	0.34%
Blue Spruce Energy Center				22,032,100	4	0.60%
<b>Total</b>	<b>\$ 588,613,100</b>		<b>12.66%</b>	<b>\$ 305,306,310</b>		<b>7.80%</b>
2013 Total Taxable Property	\$4,650,461,850					
2004 Total Taxable Property	\$3,659,216,940					

(1) Source: Adams County Assessor's Office

**Adams County, Colorado**  
**Direct and Overlapping Property Tax Rates (1)**  
**Last Ten Fiscal Years**

	2004	2005	2006	2007	2008	2009	2010	2011	2012	2013
<b>Adams County</b>	26.903	26.804	26.974	26.899	26.809	26.824	26.883	26.806	26.903	26.815
County General	22.143	22.044	23.064	22.989	22.899	22.914	22.973	22.896	22.993	22.905
Road / Bridge	1.300	1.300	1.300	1.300	1.300	1.300	1.300	1.300	1.300	1.300
Social Services	2.353	2.353	2.353	2.353	2.353	2.353	2.353	2.353	2.353	2.353
Retirement	0.850	0.850	0.000	0.000	0.000	0.000	0.000	0.000	0.000	0.000
Developmentally Disabled	0.257	0.257	0.257	0.257	0.257	0.257	0.257	0.257	0.257	0.257
<b>Cities</b>										
Arvada	4.310	4.310	4.310	4.310	4.310	4.310	4.310	4.310	4.310	4.310
Aurora	11.079	10.958	10.867	10.701	10.644	10.494	10.595	10.653	10.290	10.290
Bennett	11.950	11.950	11.950	11.950	11.950	11.950	11.950	11.950	11.950	11.950
Brighton	6.650	6.650	6.650	6.650	6.650	6.650	6.650	6.650	6.650	6.650
Commerce City	33.280	3.280	3.280	3.280	3.280	3.280	3.206	3.280	3.269	3.280
Federal Heights	0.680	0.680	0.680	0.680	0.680	0.680	0.680	0.680	0.680	0.680
Lochbuie	0.000	0.000	13.876	13.876	11.624	15.313	17.136	19.240	16.908	18.061
Northglenn	11.597	11.597	11.597	11.597	11.597	11.597	11.597	11.597	11.597	11.597
Thornton	25.210	10.210	10.210	10.210	10.210	10.210	10.210	10.210	10.597	10.210
Westminster	19.650	3.650	3.650	3.650	3.650	3.650	3.650	3.650	3.650	3.650
<b>School Districts</b>										
District No 1	39.550	36.273	37.107	36.454	35.852	40.118	43.605	43.740	43.906	46.794
District No 12	68.763	67.060	67.044	64.595	69.671	70.179	70.359	70.276	70.602	68.605
District No 14	43.839	41.340	47.443	45.279	44.961	44.813	44.908	44.977	44.917	45.080
District No 26	33.000	31.163	30.169	27.432	27.355	27.342	27.319	27.293	27.309	27.221
District No 27	48.022	39.244	45.562	45.264	45.215	45.284	45.703	45.629	45.629	45.629
District No 28	47.003	45.824	45.745	45.530	53.248	53.455	53.919	54.159	63.830	67.323
District No 29	37.903	36.340	34.156	34.246	35.724	33.381	33.258	33.330	33.281	33.399
District No 31	49.666	49.666	50.631	50.631	50.738	49.335	46.458	42.494	41.135	39.952
District No 32	36.451	34.284	33.910	33.603	32.607	32.520	32.305	33.148	31.407	30.726
District No 50	48.154	46.790	54.276	55.601	56.970	59.704	58.722	61.473	59.983	58.451
District No RE 3	40.040	32.145	31.230	30.708	26.196	21.705	22.242	21.786	19.589	16.936
District No RE 50	42.719	38.603	35.853	36.027	35.707	35.382	35.494	35.297	34.174	32.085
<b>Library Districts</b>										
Anapahoe Library	4.900	4.963	4.893	4.814	4.827	4.783	4.869	4.981	4.903	4.861
Rangeview Library	1.394	1.388	3.659	3.504	3.659	3.659	3.659	3.659	3.659	3.659
<b>Urban Drainage &amp; Flood Control</b>	0.604	0.597	0.608	0.568	0.591	0.569	0.576	0.623	0.599	0.608
<b>Aims Junior College</b>	6.328	6.357	6.330	6.308	6.323	6.312	6.360	6.355	6.318	6.302
<b>Water, Sewer &amp; Sanitation Districts</b>	0.027 to 90.000	0.027 to 60.000	0.027 to 60.000	0.028 to 60.000	.029 to 60.000	.030 to 60.000	0.425 to 80.108	.030 to 102.171	0.030 to 99.300	0.000 to 96.110
<b>Fire Districts</b>	0.890 to 13.684	0.500 to 13.569	4.300 to 13.595	4.300 to 21.000	.500 to 54.000	.500 to 21.000	0.500 to 21.000	0.500 to 21.000	0.500 to 21.00	0.500 to 21.000
<b>Park and Recreation Districts</b>	2.517 to 10.000	2.497 to 10.000	2.575 to 10.000	2.589 to 10.000	5.010 to 10.000	5.010 to 10.000	2.589 to 10.000	2.589 to 10.000	2.589 to 10.00	2.589 to 10.000
<b>Metro Districts</b>	10.845 to 112.530	3.000 to 112.530	84.183 to 115.581	3.000 to 65.000	25.000 to 99.000	25.000 to 99.000	31.000 to 99.000	1.000 to 99.000	1.00 to 99.000	2.000 to 99.000
<b>Urban Renewal/Improvement Districts</b>	1.488 to 115.487	1.383 to 115.581	5.000 to 121.061	5.000 to 45.000	5.000 to 45.000	5.000 to 45.000	5.000 to 45.000	5.000 to 45.000	86.807 to 124.793	1.000 to 122.594

(1) Source: Adams County Assessor's Office



**Adams County, Colorado**  
**Ratio of Outstanding Debt by Type**  
**December 31, 2013**  
**Last Ten Years**

**Governmental Activities**

---

<u>Fiscal Year</u>	<u>Certificates of Participation</u>	<u>Per Capita</u>	<u>Percentage of Personal Income</u>
2004	23,600,000	60.42	0.22%
2005	22,340,000	55.66	0.19%
2006	21,040,000	50.74	0.17%
2007	19,695,000	46.80	0.15%
2008	53,300,000	123.71	0.38%
2009	151,936,789	345.44	1.09%
2010	161,361,646	365.40	1.14%
2011	154,564,869	342.28	1.04%
2012	147,521,569	320.89	0.93%
2013	140,216,655	Not Available	Not Available

**Adams County, Colorado**  
**Computation of Direct, Overlapping and Underlying Long-Term Debt**  
**December 31, 2013**

<b>GOVERNMENTAL UNIT</b>	<b>Long-Term Debt</b>	<b>Percent Applicable to County</b>	<b>County's Share of Debt</b>
<b>Direct:</b>			
Adams County	\$ -	-	\$ -
<b>Overlapping:</b>			
City of Aurora	7,067,250	20.93%	1,479,182
Town of Lochbuie	1,997,931	1.30%	25,922
School District No. 12	286,987,166	82.06%	235,494,819
School District No. 27J	148,825,000	96.69%	143,900,641
School District No. 28J	344,584,578	35.54%	122,481,263
School District No. 29J	8,137,000	55.41%	4,508,432
School District No. 31J	9,035,000	74.11%	6,695,993
School District No. 32J	945,000	50.40%	476,316
School District No. RE-3J	30,542,699	0.70%	214,906
School District No. RE-50J	377,791	3.15%	11,900
Bromley Park #2	33,515,000	99.31%	33,284,341
Central Colorado Groundwater Mgmt	15,719,173	7.19%	1,130,593
Central Colorado Waster Conservation	30,000,000	19.73%	5,918,706
Central Colorado Well Augmentation	13,888,360	0.45%	62,660
North Metro Fire Rescue District	21,875,000	22.25%	4,868,230
North Washington Fire Protection Dist 3	4,070,285	102.00%	4,151,851
Sable-Altura Fire Protection District	4,475,000	64.65%	2,892,926
Aurora Urban Renewal	344,584,578	0.50%	1,708,808
Sand Creek Metropolitan	64,890,000	79.73%	51,739,610
<b>Underlying:</b>			
School District No. 1	37,551,271	100.00%	37,551,271
School District No. 14	81,943,326	100.00%	81,943,326
School District 50	86,735,000	100.00%	86,735,000
Aberdeen Metro No. 1	7,870,000	100.00%	7,870,000
Aberdeen Metro No. 2	2,090,000	100.00%	2,090,000
Airways Business Center Metro District	1,925,000	100.00%	1,925,000
Aspen Hills Metropolitan District	1,065,000	100.00%	1,065,000
Aurora Single Tree Metropolitan District	8,065,000	100.00%	8,065,000
Belle Creek Metro #1	4,105,000	100.00%	4,105,000
Bennett Park & Rec	1,759,000	100.00%	1,759,000
Big Dry Creek Metro District	550,800	100.00%	550,800
BNC Metropolitan District No. 1	5,380,000	100.00%	5,380,000
BNC Metropolitan District No. 2	5,000,000	100.00%	5,000,000
Bradburn Metro No. 2	7,094,071	100.00%	7,094,071
Bradburn Metro No. 3	7,888,656	100.00%	7,888,656
Brighton Crossing No. 4	15,275,000	100.00%	15,275,000
Bromley Park No. 3	19,300,000	100.00%	19,300,000
Bromley Park No. 5	2,860,000	100.00%	2,860,000
Bromley Park No. 6	4,315,000	100.00%	4,315,000
Buffalo Ridge	18,899,537	100.00%	18,899,537
Buffalo Ridge Metropolitan District	14,870,391	100.00%	14,870,391
Buffalo Run Mesa Metropolitan District	6,874,000	100.00%	6,874,000
Colorado International Center Metro Dist 3	2,868,000	100.00%	2,868,000
Commerce City Northern Infrastructure GID	84,735,000	100.00%	84,735,000

Continued on Next Page

<b>GOVERNMENTAL UNIT</b>	<b>Long-Term Debt</b>	<b>Percent Applicable to County</b>	<b>County's Share of Debt</b>
Colorado Science Tech Metro #1	6,671,354	100.00%	6,671,354
Country Club Village 1	2,865,000	100.00%	2,865,000
Cutler Farms Metro District	127,260	100.00%	127,260
Diatc Metropolitan District	2,500,000	100.00%	2,500,000
Eagle Creek Metropolitan District	3,312,351	100.00%	3,312,351
Eagle Shadow Metropolitan Dist. No. 1	10,565,000	100.00%	10,565,000
Eastpark 70 Metro District	8,380,000	100.00%	8,380,000
Fallbrook Metropolitan District	6,849,646	100.00%	6,849,646
Fire District 2 Southwest Adams	388,100	100.00%	388,100
Fire District 2 Bond Southwest Adams	388,100	100.00%	388,100
Fronterra Village Metropolitan District	12,259,714	100.00%	12,259,714
Fronterra Village Metropolitan District No. 2	7,152,722	100.00%	7,152,722
Greatrock North Water & Sanitation District	5,435,000	100.00%	5,435,000
Hazeltine Heights Water & Sanitation	326,143	100.00%	326,143
Heritage Todd Creek Metro District	27,587,000	100.00%	27,587,000
Highpoint Metropolitan District	1,645,000	100.00%	1,645,000
Highpoint Park Metro District	1,470,000	100.00%	1,470,000
Himalaya Water & Sanitation	4,395,000	100.00%	4,395,000
Horse Creek Metropolitan District	1,413,000	100.00%	1,413,000
Huntington Trails Metropolitan	6,380,000	100.00%	6,380,000
Hyland Hills Park & Recreation	10,390,000	100.00%	10,390,000
Lakeview Estates Water	866,385	100.00%	866,385
Lambertson Lakes Metropolitan District	6,220,000	100.00%	6,220,000
Laredo Metropolitan District	4,700,000	100.00%	4,700,000
Larkridge Metro District No. 1	10,950,000	100.00%	10,950,000
Larkridge Metro District No. 2	2,944,661	100.00%	2,944,661
Marshall Lake Metropolitan District	2,705,000	100.00%	2,705,000
North Range Metropolitan District No. 1	30,815,000	100.00%	30,815,000
North Range Metropolitan District No. 2	26,375,000	100.00%	26,375,000
North Range Village Metro District	8,125,892	100.00%	8,125,892
Northern Metropolitan Bond	1,200,000	100.00%	1,200,000
Northern Metropolitan District	1,645,000	100.00%	1,645,000
Park 70 Metropolitan District	10,950,000	100.00%	10,950,000
PLA Metro District	1,365,000	100.00%	1,365,000
Potomac Farms Metropolitan District	5,530,000	100.00%	5,530,000
Prairie Center Metro No. 3	34,195,000	100.00%	34,195,000
Riverdale Dunes Metropolitan Dist. No. 1	2,675,000	100.00%	2,675,000
Riverdale Peaks No. 2	3,070,000	100.00%	3,070,000
River Oaks Metropolitan District	8,985,000	100.00%	8,985,000
Talon Pointe Metropolitan District	8,000,000	100.00%	8,000,000
Todd Creek Farms Metropolitan Dist. No. 2	1,135,000	100.00%	1,135,000
Tower Metro District	13,270,000	100.00%	13,270,000
	<u>\$ 2,106,758,191</u>		<u>\$ 1,356,288,479</u>

Source: Adams County Finance Department

Note: Overlapping Debt percentage is calculated using Adams County Total Assessed Value divided by the District's Total Assessed Value as provided by the District.

Adams County, Colorado  
**Legal Debt Margin Information**  
 Last Ten Years

	<u>2004</u>	<u>2005</u>	<u>2006</u>	<u>2007</u>	<u>2008</u>	<u>2009</u>	<u>2010</u>	<u>2011</u>	<u>2012</u>	<u>2013</u>
Actual Property Value (1)										
Assessed Property Value (2)	\$ 4,092,791,580	\$ 4,447,473,620	\$ 4,652,893,320	\$ 5,191,535,030	\$ 5,510,084,170	\$ 5,499,491,100	\$ 5,550,837,950	\$ 5,724,205,140	\$ 5,813,439,290	\$ 5,959,199,230
Statutory Debt Limit 3%	122,783,747	133,424,209	139,586,800	155,746,051	165,302,525	164,984,733	166,525,139	171,726,154	174,403,179	178,775,977
Debt Applicable to Limit										
General Obligation Bonds	-	-	-	-	-	-	-	-	-	-
Other Applicable Debt	-	-	-	-	-	-	-	-	-	-
Net Debt Applicable to Limits	-	-	-	-	-	-	-	-	-	-
Legal Debt Margin (3)	\$ 122,783,747	\$ 133,424,209	\$ 139,586,800	\$ 155,746,051	\$ 165,302,525	\$ 164,984,733	\$ 166,525,139	\$ 171,726,154	\$ 174,403,179	\$ 178,775,977
Total Debt as percentage of debt limit	0%	0%	0%	0%	0%	0%	0%	0%	0%	0%

(1) The County assesses property frequently; therefore assessed and actual are substantially equal.  
 (2) Difference between assessed property value to compute Legal Debt Margin in this schedule and the assessed/actual value of taxable property in the schedule on page 108 is in the Tax Exempt Property.  
 (3) For years beginning 2003 debt limits are calculated using the 2002 revised Section 30-26-301, which states a County shall not have debt in excess of 3% of the actual value of the taxable property as determined by the Assessor.

**Adams County, Colorado**  
**Demographic and Economic Statistics**  
**Last Ten Years**

<b>Fiscal Year</b>	<b>Population (1)</b>	<b>Per Capita Personal Income (2)</b>	<b>Annual Total Personal Income (2)</b>	<b>Median Age (3)</b>	<b>Public School Enrollment (4)</b>	<b>Unemployment Rate (2)</b>
2004	390,587	28,119	10,967,707,000	32.00	68,629	6.5%
2005	401,332	29,001	11,664,586,000	32.10	73,348	5.2%
2006	414,652	29,598	12,272,985,000	32.10	74,157	5.0%
2007	420,833	30,351	12,772,840,000	32.30	75,780	4.8%
2008	430,836	32,588	13,999,767,000	32.10	79,253	5.5%
2009	439,836	31,727	13,991,470,000	32.80	79,477	8.6%
2010	441,603	31,849	14,130,401,000	32.40	81,838	10.2%
2011	451,576	33,061	14,925,051,000	32.10	85,951	9.5%
2012	459,730	34,695	15,945,588,000	33.00	88,011	8.9%
2013	467,666	Not Available	Not Available	32.40	88,949	6.5%

(1) Source: State Demography Office, Colorado Division of Local Government.  
Population is adjusted as forecasts and estimates change

(2) Source: Bureau of Economic Analysis, US Bureau of Labor Statistics

(3) Source: Colorado Department of Local Affairs

(4) Source: US Census Bureau

**Adams County, Colorado  
Principal Employers  
2013 and 2004**

<b>Employer</b>	<b>2013</b>			<b>2004</b>		
	<b>Employees</b>	<b>Rank</b>	<b>Percentage of Total County Employment</b>	<b>Employees</b>	<b>Rank</b>	<b>Percentage of Total County Employment</b>
Children's Hospital	4900	1	2.25%			
University of Colorado Hospital	4890	2	2.25%			
United Parcel Service	2330	3	1.07%	2600	1	1.42%
Avaya Communications	1000	4	0.46%	1711	2	0.93%
Centura St Anthony Hospital North	860	5	0.39%			
HealthOne: North Suburban Medical Center	750	6	0.34%			
Sturgeon Electric	730	7	0.34%			
DISH Network	690	8	0.32%			
Shamrock Foods	680	9	0.31%	588	6	0.32%
Alliance Data	540	10	0.25%			
Wagner Equipment				650	5	0.35%
EchoStar				1350	3	0.74%
Western Distributing				570	7	0.31%
Sara Lee Bakery				450	9	0.25%
HVH Transportation				420	10	0.23%
Federal Express				975	4	0.53%
Denver Auto Auction				515	8	0.28%
<b>Total</b>	<b>17,370</b>		<b>7.97%</b>	<b>9,829</b>		<b>5.36%</b>
<b>Total County Employment</b>	<b>217,815</b>			<b>183,515</b>		

Sources: Adams County Economic Development (Employer Data)  
Colorado Department of Labor & Employment (Total employed in Adams County)

Does not include governmental entity employers.

**Adams County, Colorado**  
**Capital Asset Statistics by Function/Program**  
**Last Nine Fiscal Years**

<u>Function/Program</u>	<u>2005</u>	<u>2006</u>	<u>2007</u>	<u>2008</u>	<u>2009</u>	<u>2010</u>	<u>2011</u>	<u>2012</u>	<u>2013</u>
<b>General Government</b>									
Square Footage of Buildings	190,482	190,482	190,482	190,482	190,482	190,482	448,668	448,668	488,668
Number of Vehicles (Including Motor Pool)	89	85	87	88	92	90	77	83	119
<b>Public Safety</b>									
Square Footage of Detention Center	342,107	342,107	342,107	342,107	342,107	342,107	342,107	342,107	342,107
Square Footage of Justice Center	202,268	202,268	202,268	202,268	304,768	304,768	304,768	304,768	304,768
Square Footage of Other Buildings	158,108	186,468	168,360	168,360	174,360	174,360	174,360	174,360	174,360
Number of Vehicles	152	164	169	172	173	171	160	187	181
<b>Public Works</b>									
Miles of Roads and Streets Maintained	1,147	1,159	1,162	1,165	1,144	1,144	1,144	1,144	1,139
Number of Traffic Signals Maintained	25	25	29	62	30	36	36	43	43
Number of Vehicles	67	65	65	62	58	84	77	72	71
<b>Culture &amp; Recreation</b>									
Acres of Parks	1,200	1,200	1,200	1,200	1,200	2,497	2,497	1,213	1,213
Miles of Trails	20	20	22	23	30	38	38	38	39
Number of Vehicles	0	0	0	0	0	0	0	7	9
<b>Health and Welfare</b>									
Square Footage of Buildings	134,798	134,798	134,798	134,798	134,798	134,798	134,798	134,798	134,798
Number of Vehicles	0	0	0	0	0	0	0	27	26
<b>Conservation of Natural Resources</b>									
Acres of Open Space Land	827	1,157	1,157	1,301	1,226	3,098	3,098	2,164	1,905
Acres of Conservation Easements	385	385	406	2,063	2,338	5,255	5,274	5,423	5,312
Number of Vehicles	0	0	0	0	0	0	0	9	7

Source: Various Adams County Departments

Note: Ten years of comparable data is not available.

Note: All Functions did not have vehicles assigned until 2013.

Adams County, Colorado  
Full-time Equivalent County Employees by Function/Program  
Last Ten Years  
Full-time Equivalent Employees as of December 31

Program/Function	2004	2005	2006	2007	2008	2009	2010	2011	2012	2013
<b>General Government</b>										
Management	53.00	77.00	72.50	85.00	37.00	31.00	28.00	28.00	31.50	97.00
Professional/Technical	148.50	136.00	129.50	151.00	200.00	209.00	191.00	187.50	205.75	151.25
Administrative Support	169.75	163.25	157.50	180.75	187.75	189.00	168.50	171.75	155.75	166.50
Labor and Trade	40.00	48.50	25.00	36.00	41.00	41.00	37.00	40.00	43.00	41.00
<b>Public Safety</b>										
Management	7.00	7.00	6.00	6.00	6.00	5.00	6.00	7.00	5.00	9.00
Officers	365.00	359.00	384.00	396.00	399.00	407.00	397.00	388.00	388.00	403.00
Civilian Professional/Technical	32.50	45.00	37.00	45.25	45.00	38.00	36.00	38.00	47.50	51.50
Administrative Support	94.00	84.50	94.00	93.75	104.50	115.00	114.25	96.25	91.75	93.25
<b>Health &amp; Welfare</b>										
Management	11.00	12.00	8.00	9.00	11.00	11.75	10.00	10.00	8.00	16.00
Professional/Technical	372.00	347.50	377.00	376.50	393.25	421.00	422.25	405.25	432.50	445.25
Administrative Support	66.50	55.00	76.00	76.00	73.00	69.00	69.00	64.00	61.00	57.50
Labor & Trade	8.00	11.50	10.00	10.75	9.75	9.75	9.50	7.75	7.75	7.00
<b>Economic Opportunity</b>										
Management	1.00	0.00	2.00	2.00	2.00	2.00	2.00	2.00	2.00	2.00
Professional/Technical	40.50	58.00	57.00	45.00	45.00	46.00	47.75	46.00	51.00	47.50
Administrative Support	2.50	4.00	4.00	3.00	3.00	3.00	3.00	3.00	3.00	3.00
<b>Public Works</b>										
Management	5.00	5.00	5.00	4.00	2.00	4.00	5.00	6.00	5.00	8.00
Professional/Technical	29.00	27.00	28.00	25.00	29.00	25.00	31.00	25.00	31.00	37.00
Administrative Support	6.00	7.00	8.00	8.00	7.00	7.00	7.00	6.00	14.00	15.00
Labor & Trade	67.00	76.00	82.00	84.00	82.00	75.00	76.00	69.00	68.00	67.00
<b>Urban Housing and Redevelopment</b>										
Management	1.00	1.00	2.00	2.00	1.00	0.25	2.00	2.00	1.00	1.00
Professional/Technical	4.00	4.00	4.00	5.00	4.00	2.00	5.00	5.00	4.00	6.00
Administrative Support	3.00	3.00	2.00	2.00	1.00	1.00	0.00	0.00	0.00	0.00
<b>Conservation of Natural Resources</b>										
Management	2.00	4.00	4.00	4.00	4.00	4.00	4.00	4.00	4.00	4.00
Professional/Technical	11.00	7.00	5.00	7.00	7.00	5.00	7.00	9.00	9.00	10.00
Administrative Support	5.00	5.00	1.50	2.75	2.00	1.00	5.00	2.00	2.00	2.00
Labor & Trade	19.00	20.00	24.00	17.00	18.00	19.00	19.00	18.00	19.00	19.00
<b>Total FTE Employees</b>	<b>1563.25</b>	<b>1567.25</b>	<b>1605.00</b>	<b>1676.75</b>	<b>1714.25</b>	<b>1740.75</b>	<b>1702.25</b>	<b>1640.50</b>	<b>1690.50</b>	<b>1759.75</b>

Source: Adams County Human Resources Department



This page is intentionally left blank