



VALUES

We are committed to:

A POSITIVE WORK ENVIRONMENT

Providing a respectful, professional work environment that will attract, retain and motivate a workforce that effectively and efficiently serves the Adams County Community

SERVANT LEADERSHIP

Serving the Adams County community with accountability and responsibility

TEAMWORK

Working together on behalf of the Adams County community

TRANSPARENCY

Engaging in open, honest, and respectful practices and communication

CREDIBILITY

Earning the trust and respect of the Adams County community by acting with integrity and ethics in all we do

Adams County, Colorado
Statistical Section Index

This part of the Adams County comprehensive annual financial report presents detailed information as a context for understanding what the information in the financial statements, note disclosures, and required supplementary information says about the County's overall financial health.

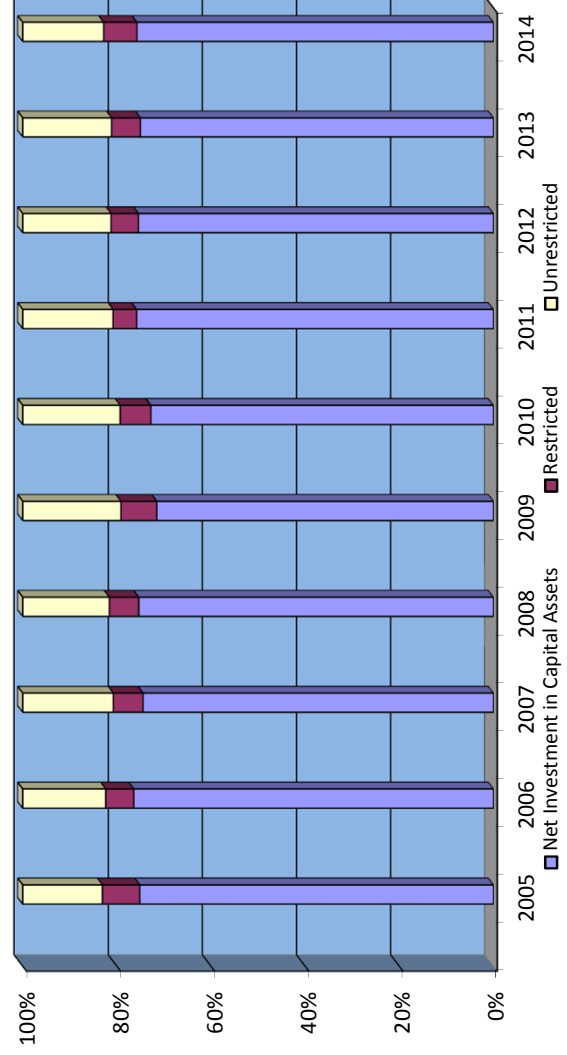
Financial Trends	Page
<i>These schedules contain trend information to help the reader understand how the County's financial performance and well-being have changed over time.</i>	
Net Position by Component	100
Changes in Net Position	101
Governmental Activities Expense Change Graphs	103
Changes in Program & General Revenue Graph	105
Fund Balances, Governmental Funds	106
Changes in Fund Balances, Governmental Funds	107
Changes in Fund Balances, Governmental Funds Graphs	108
Revenue Capacity	
<i>These schedules contain information to help the reader assess the County's most significant sources of revenue.</i>	
Assessed/Actual Value of Taxable Property	109
Property Tax Levies and Collections	110
Principal Property Tax Payers	111
Direct and Overlapping Property Tax Rates	112
Debt Capacity	
<i>These schedules contain information to help the reader assess the affordability of the County's current level of debt and the county's ability to issue debt in the future.</i>	
Ratio of Outstanding Debt by Type	113
Computation of Direct, Overlapping and Underlying Long-Term Debt	114
Legal Debt Margin Information	116
Demographic and Economic Information	
<i>These schedules offer demographic and economic indicators to help the reader understand the environment within which the County's financial activities take place.</i>	
Demographic and Economic Statistics	117
Principal Employers	118
Operating Information	
<i>These schedules contain information regarding types of assets by function/department and the number of employees in various job categories.</i>	
Capital Asset Statistics by Function/Program	119
Full-Time Equivalent County Employees by Function/Program	120

This Page Intentionally Left Blank.

Adams County, Colorado
Net Position by Component
Last Ten Years

	2005	2006	2007	2008	2009	2010	2011	2012	2013	2014
Governmental Activities										
Net Investment in Capital Assets	\$ 495,306,316	\$ 534,593,275	\$ 536,994,805	\$ 554,481,895	\$ 534,982,272	\$ 557,397,767	\$ 592,522,933	\$ 596,555,287	\$ 593,574,188	\$ 606,202,634
Restricted	53,225,936	42,328,514	46,405,245	46,812,777	58,041,779	50,731,051	39,750,571	46,557,791	49,202,652	60,449,728
Unrestricted	111,080,386	122,288,680	137,797,761	134,148,061	154,930,749	157,176,026	148,150,452	146,459,139	147,915,202	140,193,413
Total governmental activities net position	\$ 659,612,638	\$ 699,210,469	\$ 721,197,811	\$ 735,442,733	\$ 747,954,800	\$ 765,304,844	\$ 780,423,956	\$ 789,572,217	\$ 790,692,042	\$ 806,845,775
Business-type Activities										
Net Investment in Capital Assets	\$ 8,153,716	\$ 8,052,459	\$ 8,135,188	\$ 8,200,054	\$ 8,083,593	\$ 7,954,054	\$ 7,738,452	\$ 7,778,089	\$ 9,332,133	\$ 40,564,861
Unrestricted	2,221,705	2,756,160	2,863,787	2,944,443	3,175,497	3,400,335	3,630,896	3,794,813	3,546,648	6,327,369
Total business-type activities net position	\$ 10,375,421	\$ 10,808,619	\$ 10,998,975	\$ 11,144,497	\$ 11,259,090	\$ 11,354,389	\$ 11,369,348	\$ 11,572,902	\$ 12,878,781	\$ 46,892,230
Total Primary Government										
Net Investment in Capital Assets	\$ 503,460,032	\$ 542,645,734	\$ 545,129,993	\$ 562,681,949	\$ 543,065,865	\$ 565,351,821	\$ 600,261,385	\$ 604,333,376	\$ 602,906,321	\$ 646,767,495
Restricted	53,225,936	42,328,514	46,405,245	46,812,777	58,041,779	50,731,051	39,750,571	46,557,791	49,202,652	60,449,728
Unrestricted	113,302,091	125,044,840	140,661,548	137,092,504	158,106,246	160,576,361	151,781,348	150,253,952	151,461,850	146,520,782
Total primary government net position	\$ 669,988,059	\$ 710,019,088	\$ 732,196,786	\$ 746,587,230	\$ 759,213,890	\$ 776,659,233	\$ 791,793,304	\$ 801,145,119	\$ 803,570,823	\$ 853,738,005

Percentage of Net Position by Component



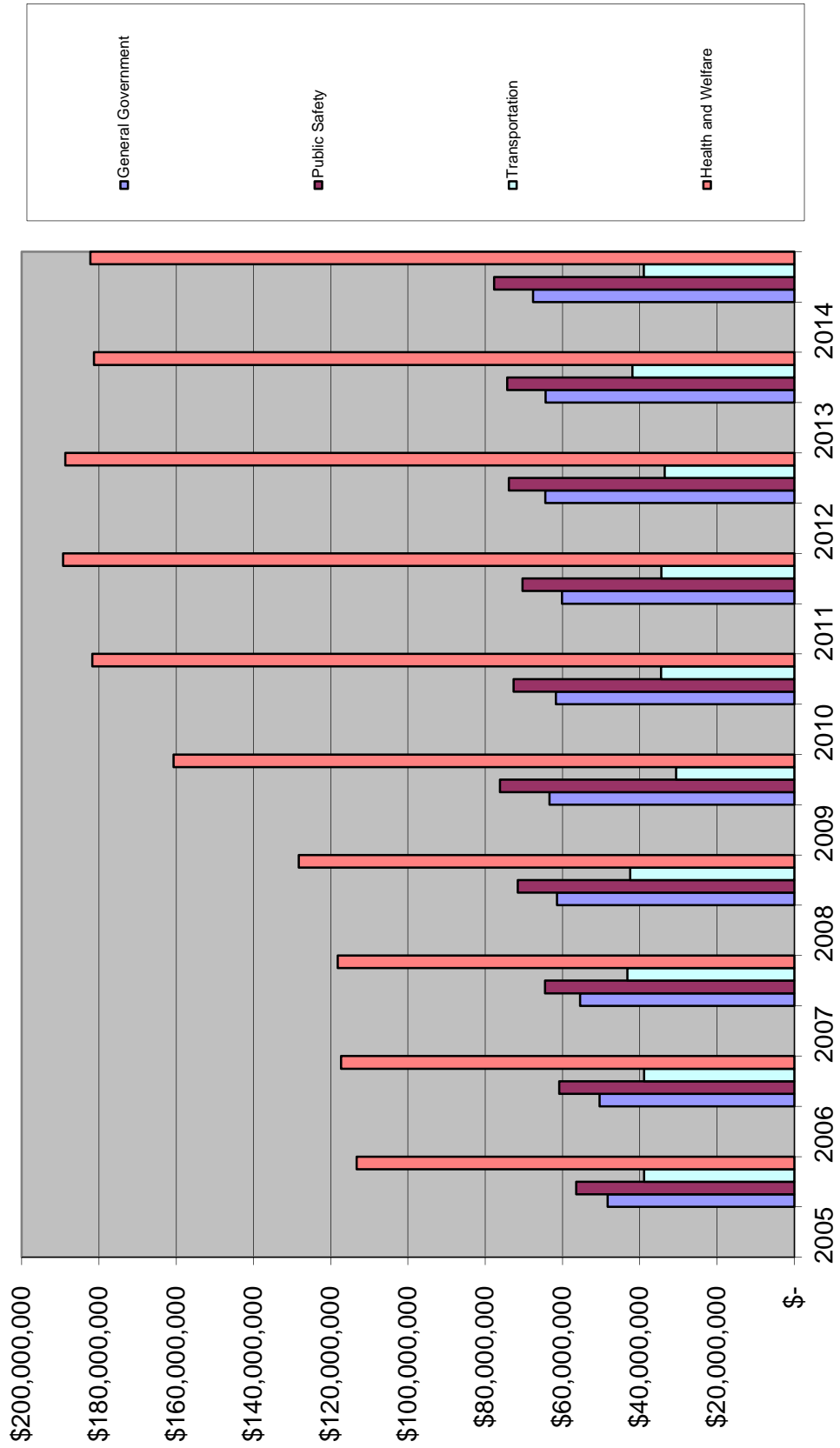
Adams County, Colorado
Changes in Net Position
Last Ten Years

	2005	2006	2007	2008	2009	2010	2011	2012	2013	2014
Expenses										
Governmental Activities										
General Government	\$ 48,305,546	\$ 50,389,174	\$ 55,429,386	\$ 61,408,120	\$ 63,382,231	\$ 61,728,753	\$ 60,112,427	\$ 64,432,076	\$ 64,364,517	\$ 67,645,619
Public Safety	56,423,552	60,814,606	64,528,882	71,585,432	76,201,817	72,666,075	70,374,242	73,890,995	74,297,420	77,728,278
County Funded Human Services	3,267,211	3,464,240	3,629,566	3,777,147	3,842,110	3,398,031	3,244,279	3,414,463	9,138,011	3,688,208
Transportation	38,882,542	38,860,660	43,161,397	42,447,761	30,553,717	34,492,821	34,414,275	33,551,692	41,891,634	38,966,452
Culture and Recreation	3,032,133	3,374,562	3,669,852	3,903,715	4,086,651	3,906,242	3,815,451	4,068,729	4,235,097	4,340,240
Health and Welfare	113,316,811	117,325,278	118,151,381	128,280,011	160,687,705	181,712,150	189,256,037	188,698,818	181,268,279	182,252,125
Urban Housing and Redevelopment	3,463,570	3,227,952	4,528,589	2,897,032	3,437,056	7,220,801	3,983,241	4,340,822	4,362,880	2,974,908
Conservation of Natural Resources	3,756,320	3,686,796	4,150,045	4,868,147	7,952,345	7,235,950	12,258,504	9,074,943	9,185,737	11,556,202
Economic Opportunity	5,757,375	5,014,885	5,592,049	5,297,734	8,335,699	8,436,630	5,249,905	6,323,042	6,451,001	5,646,147
Interest Expense	919,671	963,590	919,108	1,589,421	6,519,982	7,184,199	7,141,671	6,898,470	6,633,838	6,322,611
Total governmental activities expense	277,124,731	287,121,743	303,760,255	326,054,520	364,999,313	387,981,652	389,850,032	394,694,050	401,828,414	401,120,790
Business-type Activities										
Golf Course	2,086,919	2,078,325	2,300,914	2,484,609	2,407,548	2,392,530	2,472,748	2,498,663	2,653,355	2,868,095
Storm Water	-	-	-	-	-	-	-	-	550,414	259,467
Airport Authority	-	-	-	-	-	-	-	-	-	4,272,009
Water and Waste Water Treatment Plant	-	-	-	-	-	-	-	-	-	-
Total business-type activities expense	2,086,919	2,078,325	2,300,914	2,484,609	2,407,548	2,392,530	2,472,748	2,498,663	3,203,769	7,609,670
Total primary government expense	\$ 279,211,650	\$ 289,200,068	\$ 306,061,169	\$ 328,539,129	\$ 367,406,861	\$ 390,374,182	\$ 392,322,780	\$ 397,192,713	\$ 405,032,183	\$ 408,730,460
Program Revenues										
Governmental Activities										
Fines & Charges for Services										
General Government	\$ 15,545,725	\$ 16,237,322	\$ 17,156,815	\$ 14,828,419	\$ 16,709,196	\$ 16,171,139	\$ 16,501,360	\$ 17,778,143	\$ 16,918,354	\$ 20,930,542
Public Safety	4,641,285	4,611,018	4,377,538	5,698,388	5,179,857	5,230,810	5,543,679	5,683,799	6,095,173	4,719,632
Transportation	2,616,752	2,454,320	1,855,448	1,129,707	1,167,755	1,530,828	1,170,586	1,300,403	2,435,131	2,722,053
Culture & Recreation	617,769	666,705	609,389	723,522	703,766	817,600	742,717	755,843	724,147	815,522
Health & Welfare	-	350	-	-	-	-	-	-	37,586	-
Conservation of Natural Resources	56,556	60,916	77,080	-	41,453	76,626	69,245	25,524	18,508	52,342
Economic Opportunity	72,263	65,258	75,988	52,149	46,201	-	-	45,301	-	-
Total Charges for Services	23,550,350	24,095,889	24,152,258	22,432,185	23,848,228	23,827,003	24,027,587	25,589,013	26,228,899	29,240,091
Operating Grants and Contributions										
General Government	1,269,572	2,189,297	1,873,936	2,116,926	1,056,510	2,558,195	2,114,669	2,582,257	2,173,598	3,197,375
Public Safety	4,570,813	4,669,403	5,137,024	5,427,130	6,852,619	6,364,326	6,354,583	6,503,497	6,589,829	6,616,344
Transportation	6,078,488	8,600,237	7,490,684	6,540,109	7,608,658	7,898,145	7,867,990	8,821,239	8,170,146	8,416,415
Culture & Recreation	24,400	-	-	-	-	-	-	-	45,000	-
Health & Welfare	106,440,755	107,772,760	106,844,065	115,792,402	144,947,269	167,856,820	173,872,725	172,599,784	172,547,787	168,737,254
Urban Housing & Redevelopment	3,195,071	3,089,239	4,368,235	2,789,881	3,256,287	6,908,889	4,305,932	4,451,511	4,835,219	2,557,871
Conservation of Natural Resources	1,225,858	1,240,378	970,542	636,679	3,535,485	567,395	1,184,090	377,732	739,892	670,555
Economic Opportunity	5,528,502	4,750,854	5,338,893	5,058,453	8,017,831	8,378,659	5,063,181	6,033,934	6,280,988	5,312,496
Total Operating Grants and Contributions	128,333,459	132,312,168	132,023,379	138,361,580	175,274,659	200,532,429	200,763,170	201,369,954	201,382,459	195,508,310

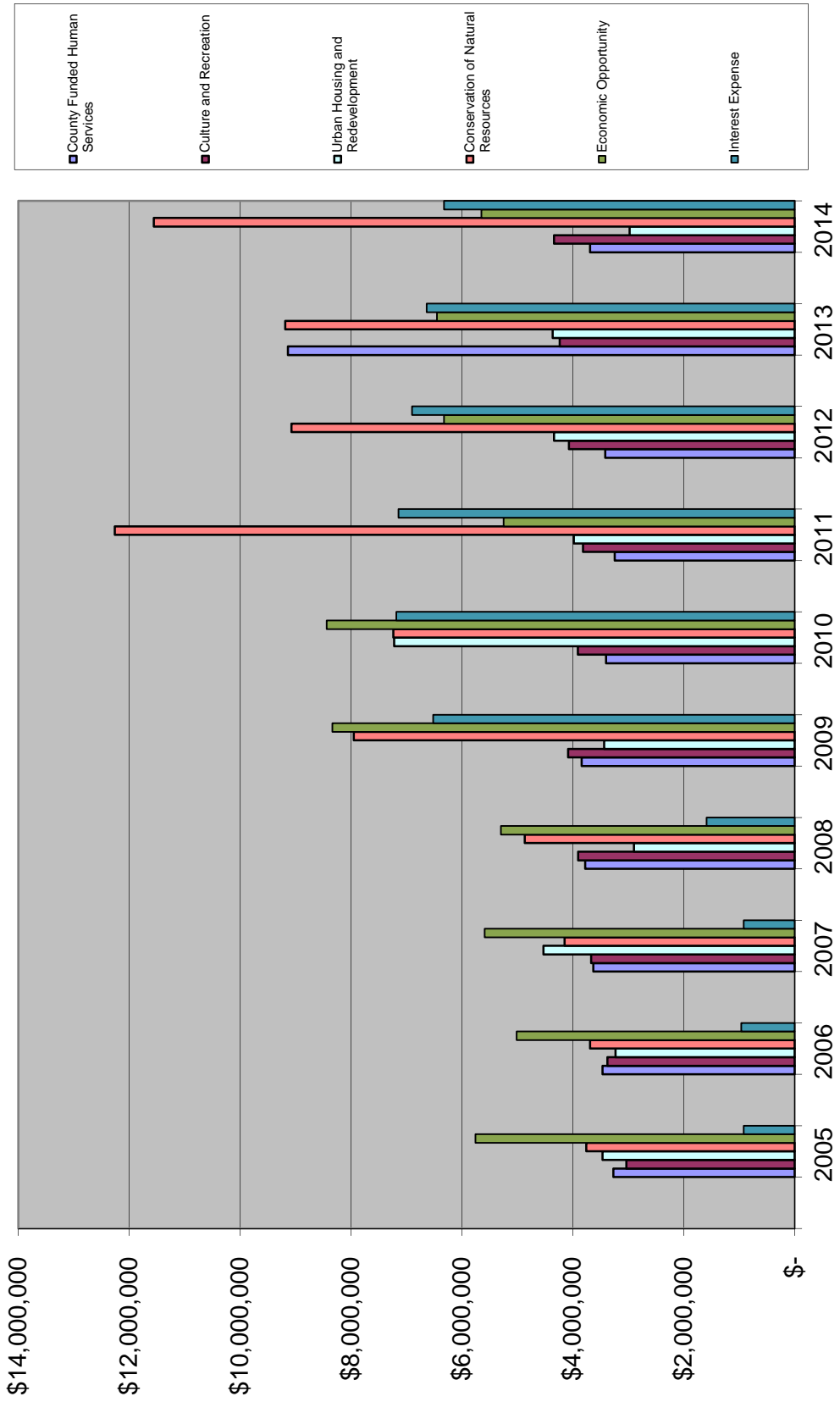
Adams County, Colorado
Changes in Net Position
Last Ten Years

	2005	2006	2007	2008	2009	2010	2011	2012	2013	2014
Capital Grants and Contributions										
General Government	13,070	456,758	451,910	53,458	-	241,108	836,512	-	274,727	5,980
Public Safety	-	635,634	14,500	-	-	-	52,921	-	-	-
Transportation	8,447,430	9,648,528	4,934,395	3,631,678	8,869,245	11,518,693	4,659,639	1,743,430	3,207,537	8,082,282
Health and Welfare	-	-	-	-	-	53,737	-	-	-	-
Urban Housing and Redevelopment	-	-	-	-	-	-	-	430,099	-	-
Conservation of Natural Resources	-	-	-	625,000	-	849,000	7,494,134	3,495,003	1,609,494	1,276,239
Total Capital Grants and Contributions	8,460,500	10,740,920	5,400,805	4,310,136	8,869,245	12,662,538	13,043,206	5,668,532	5,091,758	9,364,501
Total governmental activities program revenue	160,344,309	167,148,977	161,576,442	165,103,901	207,992,132	237,021,970	237,833,963	232,627,499	232,703,116	234,112,902
Business-type Activities										
Golf Course - Charges for Services	2,748,925	2,731,697	2,688,802	2,902,979	2,848,361	2,820,454	2,823,117	3,035,780	2,814,234	3,597,681
Storm Water - Charges for Services	-	-	-	-	-	-	-	-	2,030,437	2,234,921
Airport Authority - Charges for Services	-	-	-	-	-	-	-	-	-	3,201,258
Water and Waste Water Treatment Plant - Charges for Services	-	-	-	-	-	-	-	-	-	17,881
Airport Authority - Capital Grants and Contributions	-	-	-	-	-	-	-	-	-	3,148,166
Total business-type activities program revenue	2,748,925	2,731,697	2,688,802	2,902,979	2,848,361	2,820,454	2,823,117	3,035,780	4,844,671	12,199,907
Total primary government program revenue	\$ 163,093,234	\$ 169,880,674	\$ 164,265,244	\$ 168,006,880	\$ 210,840,493	\$ 239,842,424	\$ 240,657,080	\$ 235,663,279	\$ 237,547,787	\$ 246,312,809
Net (Expense)/Revenue										
Governmental Activities	\$ (116,780,422)	\$ (119,972,766)	\$ (142,183,813)	\$ (160,950,619)	\$ (157,007,181)	\$ (150,959,682)	\$ (152,016,069)	\$ (162,066,551)	\$ (169,125,298)	\$ (167,007,888)
Business-type Activities	662,006	653,372	387,888	418,370	440,813	427,924	350,369	537,117	1,640,902	4,590,237
Total primary government net (expense)/revenue	\$ (116,118,416)	\$ (119,319,394)	\$ (141,795,925)	\$ (160,532,249)	\$ (156,566,368)	\$ (150,531,758)	\$ (151,665,700)	\$ (161,529,434)	\$ (167,484,396)	\$ (162,417,651)
General Revenues and Other Changes in Net Position										
Governmental Activities										
Taxes										
Property Taxes	\$ 98,285,280	\$ 105,568,720	\$ 110,413,882	\$ 119,346,965	\$ 121,842,329	\$ 120,948,144	\$ 120,000,652	\$ 118,469,008	\$ 120,606,411	\$ 123,964,311
Sales Taxes	26,118,233	27,235,502	30,165,614	30,494,275	27,672,357	29,037,709	30,981,723	34,520,050	37,352,401	41,115,244
Specific Ownership Taxes	10,287,744	10,816,361	10,591,852	10,193,583	9,064,549	8,211,138	7,932,610	8,390,103	9,232,003	10,135,792
Other Taxes	361,249	419,199	398,255	419,766	664,877	380,238	415,962	509,974	464,794	765,698
Unrestricted Investment Earnings	6,642,999	10,318,270	12,244,860	8,766,805	4,411,282	3,487,202	3,038,344	2,437,223	(1,628,626)	3,180,819
Gain/Loss on Sale of Capital Assets	-	-	-	457,605	-	799,263	-	23,347	18,269	-
Miscellaneous	3,923,638	4,872,545	4,231,536	5,741,602	5,523,854	5,106,032	4,169,552	6,525,107	5,151,514	4,662,442
Loss on Disposal of Capital Assets	-	-	(4,214,844)	-	-	-	-	-	-	-
Transfers	340,000	340,000	340,000	340,000	340,000	340,000	340,000	340,000	340,000	(662,685)
Total Governmental Activities	145,959,143	159,570,597	164,171,155	175,760,601	169,519,248	168,309,726	166,878,843	171,214,812	171,536,766	183,161,621
Business-type Activities										
Unrestricted Investment Earning	59,092	119,826	142,468	67,152	10,022	7,375	4,590	8,518	4,977	1,718
Gain/Loss on Sale of Capital Assets	-	-	-	-	3,758	-	-	(2,081)	(15,220)	-
Miscellaneous	(340,000)	(340,000)	(340,000)	(340,000)	(340,000)	(340,000)	(340,000)	(340,000)	(340,000)	79,811
Transfers	(280,908)	(220,174)	(197,532)	(272,848)	(326,220)	(332,625)	(335,410)	(333,563)	(350,243)	744,214
Total Business-type Activities	\$ 145,678,235	\$ 159,350,423	\$ 163,973,623	\$ 175,487,753	\$ 169,193,028	\$ 167,977,101	\$ 166,543,433	\$ 170,881,249	\$ 171,186,523	\$ 183,905,835
Total Primary Government General Revenues										
Change in Net Position										
Governmental Activities	\$ 29,178,721	\$ 39,597,831	\$ 21,987,342	\$ 14,809,982	\$ 12,512,067	\$ 17,350,044	\$ 14,862,774	\$ 9,148,261	\$ 2,411,468	\$ 16,153,733
Business-type Activities	381,098	433,198	190,356	145,522	114,593	95,299	14,959	203,554	1,290,659	5,334,451
Total Primary Government	\$ 29,559,819	\$ 40,031,029	\$ 22,177,698	\$ 14,955,504	\$ 12,626,660	\$ 17,445,343	\$ 14,877,733	\$ 9,351,815	\$ 3,702,127	\$ 21,488,184

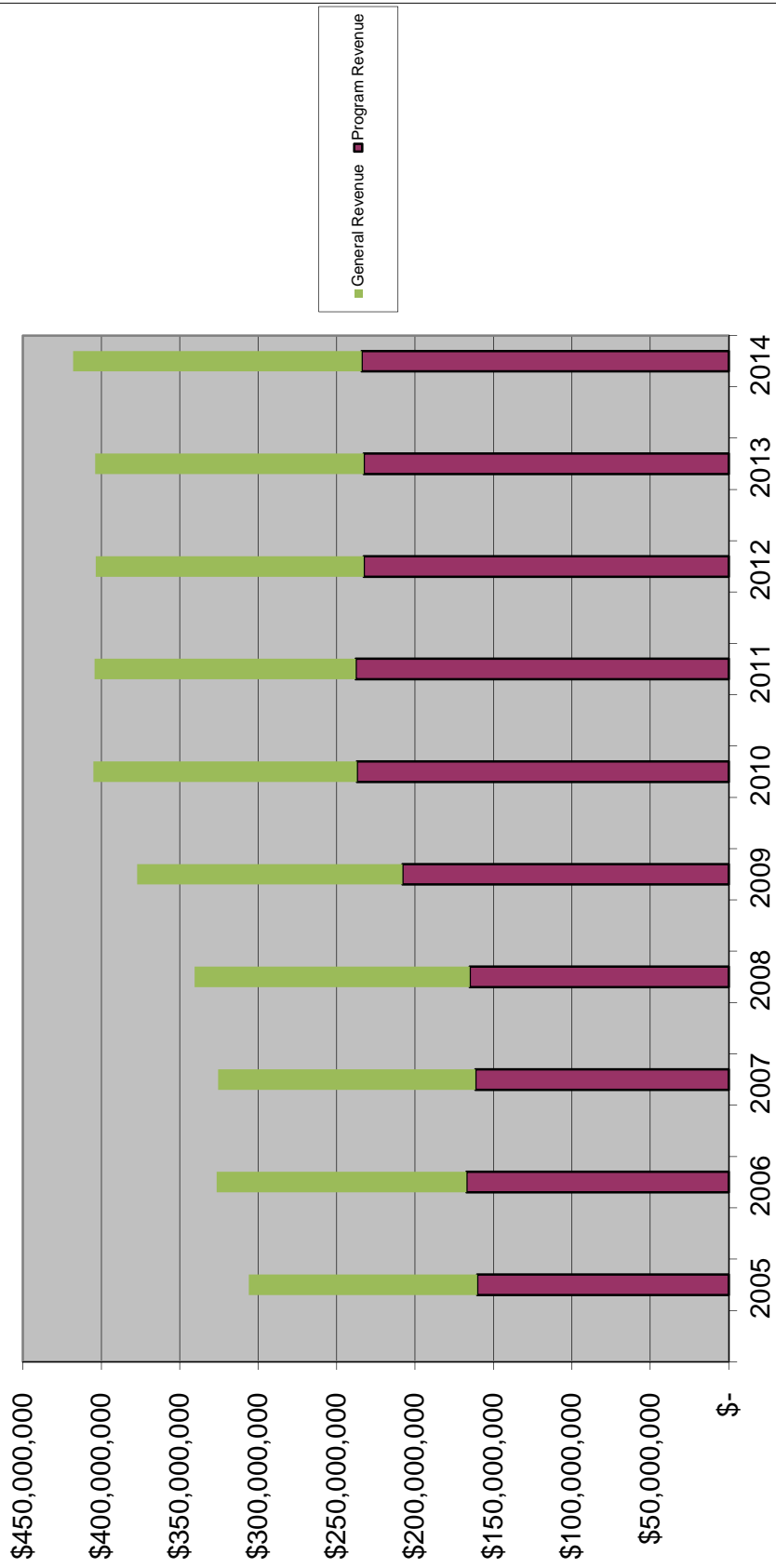
Governmental Activities Expense Changes



Governmental Activities Expense Changes



Changes in Program & General Revenues



Adams County, Colorado
Fund Balances, Governmental Funds
Last Ten Years

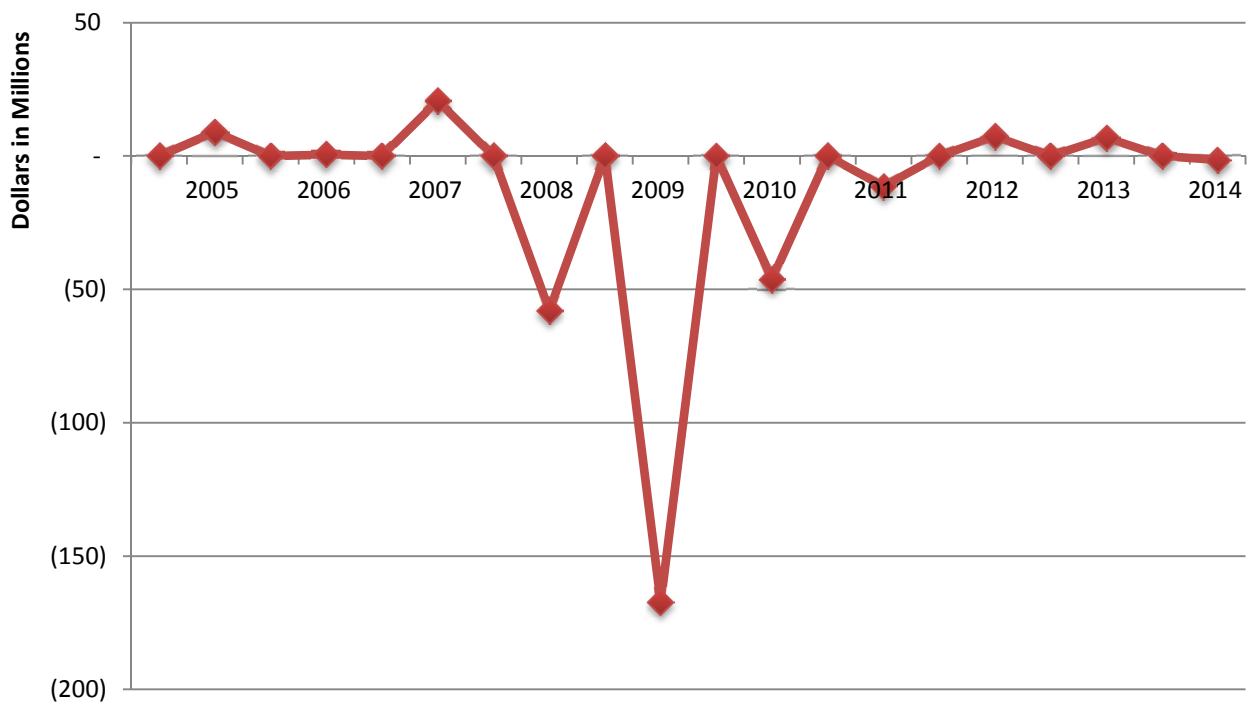
	2005	2006	2007	2008	2009	2010	2011	2012	2013	2014
General Fund										
Restricted	\$ -	\$ -	\$ -	\$ -	\$ 11,064,500	\$ 11,492,899	\$ 17,249,860	\$ 17,468,266	\$ 17,438,298	\$ 17,603,898
Committed	-	-	-	-	-	-	38,548,895	39,850,069	40,001,844	40,052,989
Assigned	-	-	-	-	-	-	157,389	207,750	196,401	237,565
Unassigned	71,217,307	82,074,695	95,414,250	95,084,429	93,367,951	93,293,454	62,304,685	60,123,396	54,886,069	56,698,238
Total General Fund	\$ 71,217,307	\$ 82,074,695	\$ 95,414,250	\$ 95,084,429	\$ 104,432,451	\$ 104,786,353	\$ 118,260,829	\$ 117,649,481	\$ 112,522,612	\$ 114,592,690
All Other Governmental Funds										
Restricted	\$ 5,354,606	\$ 9,222,061	\$ 9,347,219	\$ 9,652,138	\$ 10,790,582	\$ 10,029,217	\$ 33,565,211	\$ 40,154,025	\$ 42,828,854	\$ 53,345,830
Assigned, reported in:										
Major funds	64,250,742	48,882,681	46,511,712	58,020,296	88,767,680	59,786,012	43,340,053	47,445,944	55,244,331	56,932,702
Special revenue funds	21,476,468	21,532,411	30,629,297	33,473,483	35,855,475	37,418,027	8,622,543	6,261,632	8,883,906	9,202,058
Total all other governmental funds	\$ 91,081,816	\$ 79,637,153	\$ 86,488,228	\$ 101,145,917	\$ 135,413,737	\$ 107,233,256	\$ 85,527,807	\$ 93,861,601	\$ 106,957,091	\$ 119,480,590
Total General & All Other Governmental Funds	\$ 162,299,123	\$ 161,711,848	\$ 181,902,478	\$ 196,230,346	\$ 239,846,188	\$ 212,019,609	\$ 203,788,636	\$ 211,511,082	\$ 219,479,703	\$ 234,073,280

Note: Fund Balance categories changed as of 1/1/2011 pursuant to GASB 54. Data for retroactive categorizing not available.

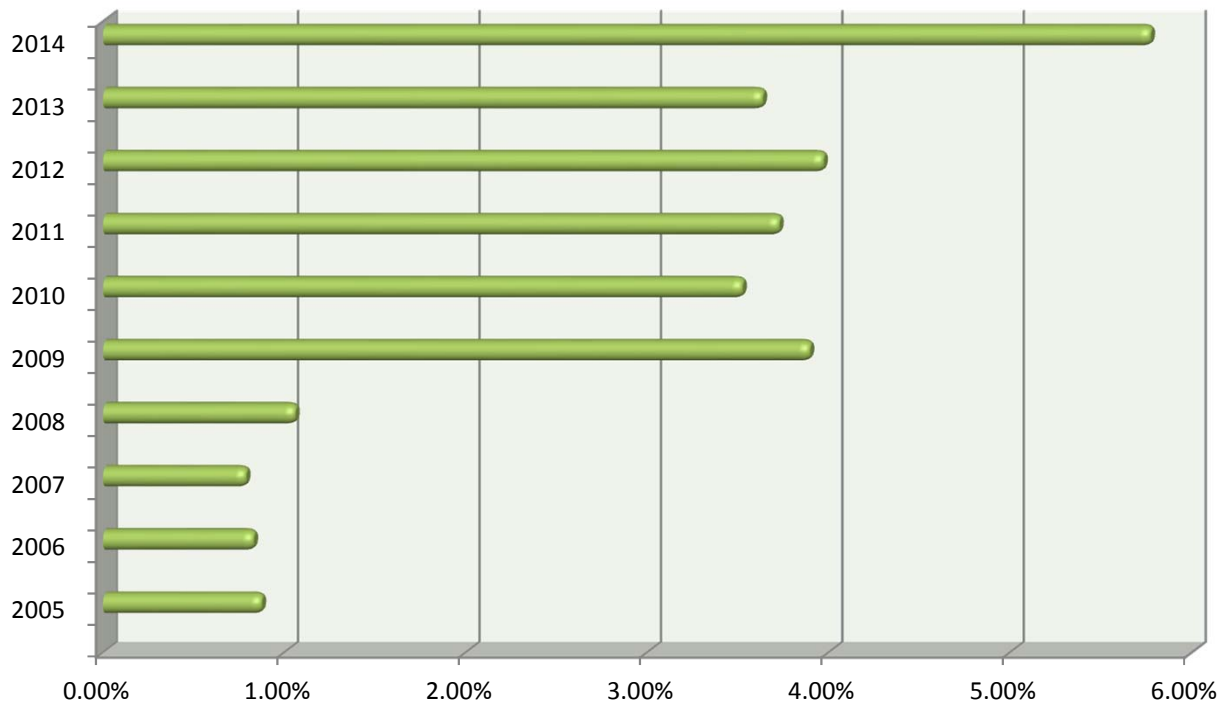
Adams County, Colorado
Changes in Fund Balances, Governmental Funds
Last Ten Years

	2005	2006	2007	2008	2009	2010	2011	2012	2013	2014
Revenues:										
Taxes	\$ 135,052,506	\$ 144,039,782	\$ 151,569,603	\$ 160,454,589	\$ 159,244,112	\$ 158,577,229	\$ 159,330,946	\$ 161,889,135	\$ 167,655,609	\$ 175,981,045
Licenses and Permits	1,278,383	1,337,706	1,153,953	680,665	692,531	1,094,570	753,458	777,015	1,412,564	1,771,733
Intergovernmental	128,333,459	132,312,168	132,023,379	138,361,580	185,244,245	208,106,791	207,483,230	202,003,859	202,544,757	197,524,023
Program Income	-	-	-	-	-	-	1,153,693	193,882	1,541,146	830,432
Charges for Services	22,271,967	22,758,183	22,998,305	21,751,520	22,055,356	22,732,433	23,274,129	24,811,998	24,816,335	27,468,358
Interest Earnings	6,642,999	10,318,270	12,244,860	8,766,805	4,411,282	3,487,202	3,038,344	2,437,223	(1,628,626)	3,180,819
Miscellaneous	3,928,138	4,877,045	4,236,036	6,284,069	6,839,604	5,059,405	4,226,509	6,478,480	5,136,715	4,653,909
Total Revenues	297,507,452	315,643,154	324,226,136	336,299,228	378,487,130	399,057,630	399,260,309	398,591,592	401,478,500	411,410,319
Expenditures:										
General Government	46,278,182	48,377,182	52,229,232	57,516,054	60,022,849	60,012,382	54,911,702	57,605,004	57,464,384	60,830,525
Transportation	31,671,119	33,146,782	36,689,909	35,263,521	24,283,840	27,740,860	25,084,133	25,212,451	33,513,222	30,444,923
Public Safety	51,423,724	56,335,493	59,744,019	66,227,502	70,721,636	66,856,170	65,222,597	66,354,652	67,400,439	70,534,412
County Funded Human Services	3,267,211	3,464,240	3,629,566	3,777,147	3,842,110	3,398,031	3,244,279	3,414,463	3,373,199	3,688,208
Health and Welfare	112,686,336	116,434,773	116,900,553	126,982,887	159,245,854	180,836,695	188,042,147	187,072,779	185,618,415	180,746,821
Culture and Recreation	2,586,029	3,006,940	3,258,609	3,430,407	3,425,260	3,340,087	3,220,777	3,402,746	3,520,402	3,574,241
Economic Opportunity	5,690,464	4,941,304	5,531,616	5,248,977	8,202,896	8,361,926	5,120,135	6,155,373	6,242,538	5,438,626
Urban Housing/Redevelopment	3,454,746	3,218,874	4,517,205	2,884,458	3,425,126	7,212,069	3,973,099	4,333,582	4,350,145	2,960,407
Conservation of Nation Resources	3,733,965	3,633,261	3,989,670	4,839,595	7,872,237	7,153,025	12,119,294	8,780,062	8,987,564	11,353,241
Capital Outlay	25,409,458	40,326,430	14,839,548	84,803,505	190,968,890	67,038,805	35,809,762	13,936,789	10,278,190	20,690,498
Debt Service										
Principal	1,260,000	1,300,000	1,345,000	1,478,061	6,563,211	6,075,143	6,796,777	8,043,300	7,304,914	16,186,819
Interest	1,029,001	968,994	918,526	1,395,000	6,221,600	7,117,260	7,158,834	6,921,292	6,655,097	6,433,949
Issuance Costs	-	-	-	391,384	1,023,216	119,184	-	-	-	-
Total Expenditures	288,490,235	315,154,273	303,593,453	394,238,498	545,818,725	445,261,637	410,703,536	391,232,493	394,708,509	412,882,670
Excess of revenues over (under) expenditures	9,017,217	488,881	20,632,683	(57,939,270)	(167,331,595)	(46,204,007)	(11,443,227)	7,359,099	6,769,991	(1,472,351)
Other Financing Sources (Uses)										
Transfers In	9,439,698	12,778,296	5,867,033	8,612,315	23,811,811	12,800,101	15,088,566	15,675,558	17,960,497	13,899,964
Transfers Out	(9,906,355)	(13,572,943)	(6,283,150)	(9,088,017)	(23,487,507)	(12,460,101)	(14,132,580)	(15,335,558)	(16,780,136)	(14,562,649)
Issuance of Debt	-	-	-	-	-	-	1,999,930	-	-	16,720,000
Proceeds Certificates of Participation	-	-	-	35,000,000	110,645,000	15,500,000	-	-	-	-
Proceeds from Sale of Assets	-	-	-	35,000,000	105,000,000	2,537,428	-	23,347	18,269	8,613
Payment to Escrow Agent	-	-	-	-	(5,581,171)	-	-	-	-	-
Premium on Bonds	-	-	-	-	641,423	-	-	-	-	-
Total other financing sources (uses)	(466,657)	(794,647)	(416,117)	69,524,298	211,029,556	18,377,428	2,955,916	363,347	1,198,630	16,065,928
Net Change in Fund Balances	\$ 8,550,560	\$ (305,766)	\$ 20,216,566	\$ 11,585,028	\$ 43,697,961	\$ (27,826,579)	\$ (8,487,311)	\$ 7,722,446	\$ 7,968,621	\$ 14,593,577
Debt service as a percentage of noncapital expenditures	0.87%	0.83%	0.78%	1.05%	3.89%	3.52%	3.72%	3.97%	3.63%	5.77%

Revenues Over/Under Expenditures



Debt as a Percentage of Expenditures



Adams County, Colorado
Assessed/Actual Value of Taxable Property(1)
Last Ten Years

Year Ended 12/31	Residential Property	Commercial Property	Industrial Property	Vacant Land	Agricultural Acre Valuation	Natural Resources	State Assessed Property	Tax-Exempt Property	Total Taxable Assessed Value	Total Direct Tax Rate(2)
2005	1,996,105,110	1,211,307,330	179,284,260	189,052,140	18,299,200	57,591,930	309,937,150	485,896,500	3,961,577,120	26.804
2006	2,078,292,790	1,253,123,650	189,591,830	191,121,120	18,144,350	68,024,410	301,926,570	552,668,600	4,100,224,720	26.974
2007	2,133,545,890	1,413,864,230	283,101,710	206,593,000	18,542,410	65,225,140	316,986,840	753,675,810	4,437,859,220	26.899
2008	2,173,141,540	1,480,135,780	314,806,400	186,478,600	18,565,270	58,557,700	323,369,960	955,028,920	4,555,055,250	26.809
2009	2,000,551,940	1,568,191,330	342,273,510	164,563,270	18,996,430	88,818,250	346,477,300	969,669,170	4,529,872,030	26.824
2010	2,010,666,990	1,572,491,250	311,982,840	150,930,860	19,222,130	46,346,980	375,729,210	1,063,467,690	4,487,370,260	26.883
2011	1,962,487,880	1,567,274,910	294,197,630	126,806,330	21,378,430	60,736,530	413,097,550	1,278,225,880	4,445,979,260	26.806
2012	1,975,519,290	1,584,428,650	311,321,490	120,063,400	21,515,790	69,716,900	441,560,540	1,289,313,230	4,524,126,060	26.903
2013	1,967,829,680	1,677,906,190	306,265,940	123,696,390	25,047,890	78,886,450	470,236,880	1,308,737,380	4,649,869,420	26.815
2014	1,994,693,510	1,695,185,290	298,835,650	110,728,240	24,933,780	77,575,760	477,030,530	1,312,798,000	5,991,780,760	27.042

(1) The County assesses property frequently; therefore assessed and actual are substantially equal.

(2) Tax rate is per \$1,000 of assessed value

Source: Adams County Assessor's Office

**Adams County, Colorado
Property Tax Levies and Collections
Last Ten Years**

Fiscal Year Ended December 31	Taxes Levied for Collection in the Fiscal Year	Current Collections		Collections in Subsequent Years (1)	Total Collections to Date	
		Amount	Percentage of Levy		Total Taxes Collected	Percentage of Levy
2005	98,443,913	97,912,755	99.46%	164,891	98,077,646	99.63%
2006	106,186,113	105,414,152	99.27%	140,706	105,554,858	99.41%
2007	110,599,462	109,940,545	99.40%	82,852	110,023,397	99.48%
2008	119,373,976	119,152,400	99.81%	147,481	119,299,881	99.94%
2009	122,116,476	121,547,279	99.53%	270,992	121,818,271	99.76%
2010	121,507,945	120,560,734	99.22%	213,814	120,774,548	99.40%
2011	120,633,975	119,783,006	99.29%	172,720	119,955,726	99.44%
2012	119,178,920	118,077,276	99.08%	173,295	118,250,571	99.22%
2013	121,712,563	120,712,476	99.18%	391,104	121,103,580	99.50%
2014	124,702,135	124,005,250	99.44%	-	124,005,250	99.44%

(1) Property taxes are collected in the fiscal year following the year levied, for example taxes levied at the end of 2013 in the amount of \$124,702,135 will be collected in 2014

Source: Adams County Assessor, Adams County Treasurer

Note: The information in this schedule relates to the County's own property tax levies, and does not include those it collects on behalf of other governments.

**Adams County, Colorado
Principal Property Tax Payers (1)
Current Year and Nine Years Ago**

Taxpayer	2014			2005		
	Taxable Assessed Value	Rank	Percentage of Total County Taxable Assessed Value	Taxable Assessed Value	Rank	Percentage of Total County Taxable Assessed Value
Suncor Energy, USA, Inc	\$ 135,434,230	1	2.89%	23,757,440	4	0.60%
Xcel Energy Co (Public Service Co)	\$ 130,936,430	2	2.80%	113,893,620	1	2.87%
Public Service Co of Colorado	\$ 77,749,560	3	1.66%			
Qwest Corporation	\$ 69,979,500	4	1.50%	52,776,600	2	1.33%
Colorado Interstate Gas Co.	\$ 53,532,200	5	1.14%	13,492,200	9	0.34%
Verizon Wireless, LLC(Cellco Prtnrshp)	\$ 24,922,200	6	0.53%	14,560,500	8	0.37%
United Power, Inc	\$ 22,994,300	7	0.49%			
Tri-State Generation	\$ 22,478,120	8	0.48%	17,408,300	6	0.44%
Kerr-McGee Gathering LLC	\$ 20,987,860	9	0.45%			
Wal-Mart Real Estate Business Trust	\$ 19,808,560	10	0.42%			
Blue Spruce Energy				27,838,900	3	0.70%
Avaya, Inc				18,270,000	5	0.46%
AT&T Communications				15,158,400	7	0.38%
Pro Logis				11,214,350	10	0.28%
Total	\$ 578,822,960		12.37%	\$ 308,370,310		7.78%
2014 Total Taxable Property	\$4,678,982,760					
2005 Total Taxable Property	\$3,961,577,120					

(1) Source: Adams County Assessor's Office

Adams County, Colorado
Direct and Overlapping Property Tax Rates (1)
Last Ten Fiscal Years

	2005	2006	2007	2008	2009	2010	2011	2012	2013	2014
Adams County	26.804	26.974	26.899	26.809	26.824	26.883	26.806	26.903	26.815	27.042
County General	22.044	23.064	22.989	22.899	22.914	22.973	22.896	22.993	22.905	23.132
Road / Bridge	1.300	1.300	1.300	1.300	1.300	1.300	1.300	1.300	1.300	1.300
Social Services	2.353	2.353	2.353	2.353	2.353	2.353	2.353	2.353	2.353	2.353
Retirement	0.850	0.000	0.000	0.000	0.000	0.000	0.000	0.000	0.000	0.000
Developmentally Disabled	0.257	0.257	0.257	0.257	0.257	0.257	0.257	0.257	0.257	0.257
Cities										
Arvada	4.310	4.310	4.310	4.310	4.310	4.310	4.310	4.310	4.310	4.310
Aurora	10.958	10.867	10.701	10.644	10.494	10.595	10.653	10.290	10.290	8.886
Bennett	11.950	11.950	11.950	11.950	11.950	11.950	11.950	11.950	11.950	11.950
Brighton	6.650	6.650	6.650	6.650	6.650	6.650	6.650	6.650	6.650	66.500
Commerce City	3.280	3.280	3.280	3.280	3.280	3.206	3.280	3.269	3.280	3.280
Federal Heights	0.680	0.680	0.680	0.680	0.680	0.680	0.680	0.680	0.680	0.680
Lochbuie	0.000	13.876	13.876	11.624	15.313	17.136	19.240	16.908	18.061	18.167
Northglenn	11.597	11.597	11.597	11.597	11.597	11.597	11.597	11.597	11.597	11.597
Thornton	10.210	10.210	10.210	10.210	10.210	10.210	10.210	10.597	10.210	10.210
Westminster	3.650	3.650	3.650	3.650	3.650	3.650	3.650	3.650	3.650	3.650
School Districts										
District No 1	36.273	37.107	36.454	35.852	40.118	43.605	43.740	43.906	46.794	47.787
District No 12	67.060	67.044	64.595	69.671	70.179	70.359	70.276	70.602	68.605	68.781
District No 14	41.340	47.443	45.279	44.961	44.813	44.908	44.977	44.917	45.080	45.080
District No 26	31.163	30.169	27.432	27.355	27.342	27.319	27.293	27.309	27.221	27.237
District No 27	39.244	45.562	45.264	45.215	45.284	45.703	45.629	45.629	45.629	47.628
District No 28	45.824	45.745	45.530	53.248	53.455	53.919	54.159	63.830	67.323	67.635
District No 29	36.340	34.156	34.246	35.724	33.381	33.258	33.330	33.281	33.399	32.950
District No 31	49.666	50.631	50.631	50.738	49.335	46.458	42.494	41.135	39.952	39.655
District No 32	34.284	33.910	33.603	32.607	32.520	32.305	33.148	31.407	30.726	30.695
District No 50	46.790	54.276	55.601	56.970	59.704	58.722	61.473	59.983	58.451	59.695
District No RE 3	32.145	31.230	30.708	26.196	21.705	22.242	21.786	19.589	16.936	14.140
District No RE 50	38.603	35.853	36.027	35.707	35.382	35.494	35.297	34.174	32.085	32.127
Library Districts										
Arapahoe Library	4.963	4.893	4.814	4.827	4.783	4.869	4.981	4.903	4.861	4.794
Rangeview Library	1.388	3.659	3.504	3.659	3.659	3.659	3.659	3.659	3.659	3.659
Urban Drainage & Flood Control	0.597	0.608	0.568	0.591	0.569	0.576	0.623	0.599	0.608	0.632
Aims Junior College	6.357	6.330	6.308	6.323	6.312	6.360	6.355	6.318	6.302	6.333
Water, Sewer & Sanitation Districts	0.027 to 60.000	0.027 to 60.000	0.028 to 60.000	.029 to 60.000	.030 to 60.000	0.425 to 80.108	.030 to 102.171	0.030 to 99.300	0.000 to 96.110	0.000 to 97.733
Fire Districts	0.500 to 13.569	4.300 to 13.595	4.300 to 21.000	.500 to 54.000	.500 to 21.000	0.500 to 21.000	0.500 to 21.000	0.500 to 21.000	0.500 to 21.000	1.000 to 21.000
Park and Recreation Districts	2.497 to 10.000	2.575 to 10.000	2.589 to 10.000	5.010 to 10.000	5.010 to 10.000	2.589 to 10.000	2.589 to 10.000	2.589 to 10.000	2.589 to 10.000	2.589 to 10.000
Metro Districts	3.000 to 112.530	84.183 to 115.581	3.000 to 65.000	25.000 to 99.000	25.000 to 99.000	31.000 to 99.000	1.000 to 99.000	1.00 to 99.000	2.000 to 99.000	0.000 to 99.000
Urban Renewal/Improvement Districts	1.383 to 115.581	5.000 to 121.061	5.000 to 45.000	5.000 to 45.000	5.000 to 45.000	5.000 to 45.000	5.000 to 45.000	86.807 to 124.793	1.000 to 122.594	92.763 to 110.392

(1) Source: Adams County Assessor's Office

Adams County, Colorado
Ratio of Outstanding Debt by Type
December 31, 2014
Last Ten Years

<u>Fiscal Year</u>	<u>Governmental Activities</u>		<u>Business-Type Activities</u>	<u>Total Primary</u>		<u>Percentage of</u> <u>Personal Income^</u>
	<u>Certificates of Participation</u>	<u>Section 108 Loan</u>	<u>2007 Note Payable</u>	<u>Government</u>	<u>Per Capita*</u>	
2005	22,340,000	-	-	-	55.66	0.19%
2006	21,040,000	-	-	-	50.74	0.17%
2007	19,695,000	-	-	-	46.80	0.15%
2008	53,300,000	-	-	-	123.71	0.38%
2009	151,936,789	-	-	-	345.44	1.09%
2010	161,361,646	-	-	-	365.40	1.14%
2011	154,564,869	-	-	-	342.28	1.04%
2012	147,521,569	-	-	-	320.89	0.93%
2013	140,216,655	1,000,000	-	-	299.82	0.85%
2014	133,132,555	9,000,000	596,880	142,729,435	304.20	N/A

Adams County, Colorado
Computation of Direct, Overlapping and Underlying Long-Term Debt
December 31, 2014

<u>GOVERNMENTAL UNIT</u>	<u>Long-Term Debt</u>	<u>Percent Applicable to County</u>	<u>County's Share of Debt</u>
Direct:			
Adams County	\$ -	-	\$ -
Overlapping:			
City of Aurora	2,115,000	21.47%	454,031
Town of Lochbuie	1,765,000	1.12%	19,688
School District No. 12	265,071,599	81.82%	216,892,422
School District No. 27J	134,210,000	94.80%	127,228,650
School District No. 28J	327,895,177	36.29%	119,001,096
School District No. 29J	7,571,000	24.57%	1,859,915
School District No. 31J	8,460,000	75.31%	6,371,022
School District No. 32J	715,000	50.57%	361,551
School District No. RE-3J	31,441,954	0.35%	111,007
School District No. RE-50J	388,519	1.59%	6,176
Bromley Park #2	21,920,000	99.39%	21,786,021
Central Colorado Groundwater Mgmt	15,719,173	8.53%	1,340,827
Central Colorado Waster Conservation	29,575,000	20.12%	5,949,058
Central Colorado Well Augmentation	13,888,360	0.50%	69,025
North Metro Fire Bond (FKA FD1B)	20,995,000	1.48%	311,497
North Metro Fire Rescue District	20,995,000	20.18%	4,236,831
Adams County Fire Protection Dist	3,564,048	98.61%	3,514,678
Sable-Altura Fire Protection District	4,720,000	57.55%	2,716,441
Aurora Urban Renewal	327,895,177	0.46%	1,500,099
Sand Creek Metropolitan	66,400,000	79.23%	52,607,022
Underlying:			
School District No. 1	34,998,114	100.00%	34,998,114
School District No. 14	77,355,000	100.00%	77,355,000
School District 50	81,525,000	100.00%	81,525,000
Aberdeen Metro No. 1	7,870,000	100.00%	7,870,000
Aberdeen Metro No. 2	2,090,000	100.00%	2,090,000
Acc Metropolitan District	1,980,000	100.00%	1,980,000
Airways Business Center Metro District	1,925,000	100.00%	1,925,000
Amber Creek Metro District	498,642	100.00%	498,642
Aspen Hills Metropolitan District	1,065,000	100.00%	1,065,000
Aurora Single Tree Metropolitan District	8,065,000	100.00%	8,065,000
Belle Creek Metro #1	4,065,000	100.00%	4,065,000
Bennett Park & Rec	1,690,000	100.00%	1,690,000
BNC Metropolitan District No. 1	5,238,000	100.00%	5,238,000
BNC Metropolitan District No. 2	5,000,000	100.00%	5,000,000
Bradburn Metro No. 2	5,017,000	100.00%	5,017,000
Bradburn Metro No. 3	7,615,000	100.00%	7,615,000
Brighton Crossing No. 4	15,275,000	100.00%	15,275,000
Bromley Park No. 3	18,980,000	100.00%	18,980,000
Bromley Park No. 5	2,810,000	100.00%	2,810,000
Bromley Park No. 6	4,240,000	100.00%	4,240,000
Buffalo Highlands Metro District	4,805,695	100.00%	4,805,695
Buffalo Ridge	15,285,000	100.00%	15,285,000
Buffalo Run Mesa Metropolitan District	6,874,000	100.00%	6,874,000
City of Thornton 136th Ave GID	2,420,000	100.00%	2,420,000
Colorado International Center Metro Dist 3	2,824,000	100.00%	2,824,000
Commerce City Northern Infrastructure GID	83,530,000	100.00%	83,530,000

Continued on Next Page

<u>GOVERNMENTAL UNIT</u>	<u>Long-Term Debt</u>	<u>Percent Applicable to County</u>	<u>County's Share of Debt</u>
Colorado Science Tech Metro #1	17,315,856	100.00%	17,315,856
Country Club Village 1	2,950,000	100.00%	2,950,000
Cundall Farms Metro	6,835,000	100.00%	6,835,000
Diatc Metropolitan District	2,500,000	100.00%	2,500,000
Eagle Creek Metropolitan District	3,060,000	100.00%	3,060,000
Eagle Shadow Metropolitan Dist. No. 1	10,245,000	100.00%	10,245,000
Eastpark 70 Metro District	5,762,004	100.00%	5,762,004
Fallbrook Metropolitan District	6,367,000	100.00%	6,367,000
Fire District 2 Southwest Adams	192,770	100.00%	192,770
Fronterra Village Metropolitan District	13,550,000	100.00%	13,550,000
Fronterra Village Metropolitan District No. 2	7,365,000	100.00%	7,365,000
Greatrock North Water & Sanitation District	5,410,000	100.00%	5,410,000
Hazeltine Heights Water & Sanitation	319,120	100.00%	319,120
Heritage Todd Creek Metro District	27,587,000	100.00%	27,587,000
Highpoint Metropolitan District	2,219,496	100.00%	2,219,496
Highpoint Park Metro District	2,830,000	100.00%	2,830,000
Himalaya Water & Sanitation	4,565,000	100.00%	4,565,000
Horse Creek Metropolitan District	1,416,000	100.00%	1,416,000
Huntington Trails Metropolitan	7,147,336	100.00%	7,147,336
Hyland Hills Park & Recreation	9,400,000	100.00%	9,400,000
Lakeview Estates Water	809,273	100.00%	809,273
Lambertson Lakes Metropolitan District	6,040,000	100.00%	6,040,000
Laredo Metropolitan District	5,701,244	100.00%	5,701,244
Larkridge Metro District No. 1	12,815,000	100.00%	12,815,000
Larkridge Metro District No. 2	4,010,000	100.00%	4,010,000
Marshall Lake Metropolitan District	2,565,000	100.00%	2,565,000
North Range Metropolitan District No. 1	27,805,000	100.00%	27,805,000
North Range Metropolitan District No. 2	25,820,000	100.00%	25,820,000
North Range Village Metro District	7,715,000	100.00%	7,715,000
Northern Commerce Metro Dist	2,118,996	100.00%	2,118,996
Northern Metropolitan Bond	815,000	100.00%	815,000
Northern Metropolitan District	815,000	100.00%	815,000
Park 70 Metropolitan District	10,570,000	100.00%	10,570,000
PLA Metro District	1,365,000	100.00%	1,365,000
Potomac Farms Metropolitan District	5,485,000	100.00%	5,485,000
Prairie Center Metro No. 3	34,195,000	100.00%	34,195,000
PV Water & Sanitation Metro District	35,878,254	100.00%	35,878,254
Rangeview Library District	35,710,000	100.00%	35,710,000
Riverdale Dunes Metropolitan Dist. No. 1	2,540,000	100.00%	2,540,000
Riverdale Peaks No. 2	3,065,000	100.00%	3,065,000
River Oaks Metropolitan District	4,265,000	100.00%	4,265,000
Talon Pointe Metropolitan District	8,000,000	100.00%	8,000,000
Todd Creek Farms Metropolitan Dist. No. 2	925,000	100.00%	925,000
Tower Metro District	13,670,000	100.00%	13,670,000
	<u>\$ 2,106,758,191</u>		<u>\$ 1,356,288,479</u>

Source: Adams County Finance Department

Note: Overlapping Debt percentage is calculated using Adams County Total Assessed Value divided by the District's Total Assessed Value as provided by the District.

Adams County, Colorado
Legal Debt Margin Information
Last Ten Years

	2005	2006	2007	2008	2009	2010	2011	2012	2013	2014
Actual Property Value (1)										
Assessed Property Value (2)	\$ 4,447,473,620	\$ 4,652,893,320	\$ 5,191,535,030	\$ 5,510,084,170	\$ 5,499,491,100	\$ 5,550,837,950	\$ 5,724,205,140	\$ 5,813,439,290	\$ 5,959,199,230	\$ 5,991,780,760
Statutory Debt Limit 3%	133,424,209	139,586,800	155,746,051	165,302,525	164,984,733	166,525,139	171,726,154	174,403,179	178,775,977	179,753,423
Debt Applicable to Limit										
General Obligation Bonds	-	-	-	-	-	-	-	-	-	-
Other Applicable Debt	-	-	-	-	-	-	-	-	-	-
Net Debt Applicable to Limits	-	-	-	-	-	-	-	-	-	-
Legal Debt Margin (3)	\$ 133,424,209	\$ 139,586,800	\$ 155,746,051	\$ 165,302,525	\$ 164,984,733	\$ 166,525,139	\$ 171,726,154	\$ 174,403,179	\$ 178,775,977	\$ 179,753,423
Total Debt as percentage of debt limit	0%	0%	0%	0%	0%	0%	0%	0%	0%	0%

(1) The County assesses property frequently; therefore assessed and actual are substantially equal.

(2) Difference between assessed property value to compute Legal Debt Margin in this schedule and the assessed/actual value of taxable property in the schedule on page 108 is in the Tax Exempt Property.

(3) For years beginning 2003 debt limits are calculated using the 2002 revised Section 30-26-301, which states a County shall not have debt in excess of 3% of the actual value of the taxable property as determined by the Assessor.

Adams County, Colorado
Demographic and Economic Statistics
Last Ten Years

Fiscal Year	Population (1)	Per Capita Personal Income (2)	Annual Total Personal Income (2)	Median Age (3)	Public School Enrollment (4)	Unemployment Rate (2)
2005	401,332	29,001	11,664,586,000	32.10	73,348	5.2%
2006	414,652	29,598	12,272,985,000	32.10	74,157	5.0%
2007	420,833	30,351	12,772,840,000	32.30	75,780	4.8%
2008	430,836	32,588	13,999,767,000	32.10	79,253	5.5%
2009	439,836	31,727	13,991,470,000	32.80	79,477	8.6%
2010	441,603	31,849	14,130,401,000	32.40	81,838	10.2%
2011	451,576	33,061	14,925,051,000	32.10	85,951	9.5%
2012	459,730	34,695	15,945,588,000	33.00	88,011	8.9%
2013	467,666	35,334	16,578,475,000	32.40	88,949	6.5%
2014	469,193	Not Available	Not Available	33.70	101,222	4.4%

(1) Source: State Demography Office, Colorado Division of Local Government.
Population is adjusted as forecasts and estimates change

(2) Source: Bureau of Economic Analysis, US Bureau of Labor Statistics

(3) Source: Colorado Department of Local Affairs

(4) Source: US Census Bureau

**Adams County, Colorado
Principal Employers
2014 and 2005**

Employer	2014			2005		
	Employees	Rank	Percentage of Total County Employment	Employees	Rank	Percentage of Total County Employment
University of Colorado Hospital	5750	1	3.15%	1500	3	0.79%
Children's Hospital	5650	2	3.10%			
United Parcel Service	2040	3	1.12%	2600	1	1.36%
Sturgeon Electric	930	4	0.51%			
HealthOne: North Suburban Medical Center	800	5	0.44%			
Centura St Anthony Hospital North	710	6	0.39%			
Steven Roberts Original Desserts	690	7	0.38%			
Shamrock Foods	640	8	0.35%	588	7	0.31%
Staples	620	9	0.34%			
DISH Network	610	10	0.33%			
Avaya Communications				1711	2	0.90%
Wagner Equipment				800	6	0.42%
EchoStar				1350	4	0.71%
Sara Lee Bakery				421	10	0.22%
HVH Transportation				470	8	0.25%
Federal Express				975	5	0.51%
Denver Newspaper Agency				425	9	0.22%
Total	12,690		6.96%	10,840		5.68%
Total County Employment	182,285			190,706		

Sources: Adams County Economic Development (Employer Data)
Colorado Department of Labor & Employment (Total employed in Adams County)

Does not include governmental entity employers.

Adams County, Colorado
Capital Asset Statistics by Function/Program
Last Ten Fiscal Years

<u>Function/Program</u>	<u>2005</u>	<u>2006</u>	<u>2007</u>	<u>2008</u>	<u>2009</u>	<u>2010</u>	<u>2011</u>	<u>2012</u>	<u>2013</u>	<u>2014</u>
General Government										
Square Footage of Buildings	190,482	190,482	190,482	190,482	190,482	190,482	448,668	448,668	488,668	488,668
Number of Vehicles (Including Motor Pool)	89	85	87	88	92	90	77	83	119	160
Public Safety										
Square Footage of Detention Center	342,107	342,107	342,107	342,107	342,107	342,107	342,107	342,107	342,107	342,107
Square Footage of Justice Center	202,268	202,268	202,268	202,268	304,768	304,768	304,768	304,768	304,768	304,768
Square Footage of Other Buildings	158,108	186,468	168,360	168,360	174,360	174,360	174,360	174,360	174,360	174,360
Number of Vehicles	152	164	169	172	173	171	160	187	181	163
Public Works										
Miles of Roads and Streets Maintained	1,147	1,159	1,162	1,165	1,144	1,144	1,144	1,144	1,139	
Number of Traffic Signals Maintained	25	25	29		30	36	36	43	43	
Number of Vehicles	67	65	65	62	58	84	77	72	71	60
Culture & Recreation										
Acres of Parks	1,200	1,200	1,200	1,200	1,200	2,497	2,497	1,213	1,213	1,213
Miles of Trails	20	20	22	23	30	38	38	38	39	39
Number of Vehicles	0	0	0	0	0	0	0	7	9	6
Health and Welfare										
Square Footage of Buildings	134,798	134,798	134,798	134,798	134,798	134,798	134,798	134,798	134,798	454,798
Number of Vehicles	0	0	0	0	0	0	0	27	26	23
Conservation of Natural Resources										
Acres of Open Space Land	827	1,157	1,157	1,301	1,226	3,098	3,098	2,164	1,905	1,905
Acres of Conservation Easements	385	385	406	2,063	2,338	5,255	5,274	5,423	5,312	5,312
Number of Vehicles	0	0	0	0	0	0	0	9	7	6

Source: Various Adams County Departments

Note: Ten years of comparable data is not available.

Note: All Functions did not have vehicles assigned until 2013.

Adams County, Colorado
Full-time Equivalent County Employees by Function/Program
Last Ten Years

Full-time Equivalent Employees as of December 31

Program/Function	2005	2006	2007	2008	2009	2010	2011	2012	2013	2014
General Government										
Management	77.00	72.50	85.00	37.00	31.00	28.00	28.00	31.50	97.00	60.00
Professional/Technical	136.00	129.50	151.00	200.00	209.00	191.00	187.50	205.75	151.25	197.75
Administrative Support	163.25	157.50	180.75	187.75	189.00	168.50	171.75	155.75	166.50	192.50
Labor and Trade	48.50	25.00	36.00	41.00	41.00	37.00	40.00	43.00	41.00	71.50
Public Safety										
Management	7.00	6.00	6.00	6.00	5.00	6.00	7.00	5.00	9.00	5.00
Officers	359.00	384.00	396.00	399.00	407.00	397.00	388.00	388.00	403.00	388.00
Civilian Professional/Technical	45.00	37.00	45.25	45.00	38.00	36.00	38.00	47.50	51.50	40.00
Administrative Support	84.50	94.00	93.75	104.50	115.00	114.25	96.25	91.75	93.25	87.25
Health & Welfare										
Management	12.00	8.00	9.00	11.00	11.75	10.00	10.00	8.00	16.00	15.00
Professional/Technical	347.50	377.00	376.50	393.25	421.00	422.25	405.25	432.50	445.25	286.75
Administrative Support	55.00	76.00	76.00	73.00	69.00	69.00	64.00	61.00	57.50	225.25
Labor & Trade	11.50	10.00	10.75	9.75	9.75	9.50	7.75	7.75	7.00	4.50
Economic Opportunity										
Management	0.00	2.00	2.00	2.00	2.00	2.00	2.00	2.00	2.00	2.00
Professional/Technical	58.00	57.00	45.00	45.00	46.00	47.75	46.00	51.00	47.50	43.00
Administrative Support	4.00	4.00	3.00	3.00	3.00	3.00	3.00	3.00	3.00	3.00
Public Works										
Management	5.00	5.00	4.00	2.00	4.00	5.00	6.00	5.00	8.00	2.00
Professional/Technical	27.00	28.00	25.00	29.00	25.00	31.00	25.00	31.00	37.00	12.00
Administrative Support	7.00	8.00	8.00	7.00	7.00	7.00	6.00	14.00	15.00	6.00
Labor & Trade	76.00	82.00	84.00	82.00	75.00	76.00	69.00	68.00	67.00	44.00
Urban Housing and Redevelopment										
Management	1.00	2.00	2.00	1.00	0.25	2.00	2.00	1.00	1.00	0.00
Professional/Technical	4.00	4.00	5.00	4.00	2.00	5.00	5.00	4.00	6.00	4.00
Administrative Support	3.00	2.00	2.00	1.00	1.00	0.00	0.00	0.00	0.00	2.00
Conservation of Natural Resources										
Management	4.00	4.00	4.00	4.00	4.00	4.00	4.00	4.00	4.00	5.00
Professional/Technical	7.00	5.00	7.00	7.00	5.00	7.00	9.00	9.00	10.00	3.00
Administrative Support	5.00	1.50	2.75	2.00	1.00	5.00	2.00	2.00	2.00	6.00
Labor & Trade	20.00	24.00	17.00	18.00	19.00	19.00	18.00	19.00	19.00	22.00
Total FTE Employees	1567.25	1605.00	1676.75	1714.25	1740.75	1702.25	1640.50	1690.50	1759.75	1727.50

Source: Adams County Human Resources Department

This Page Intentionally Left Blank.