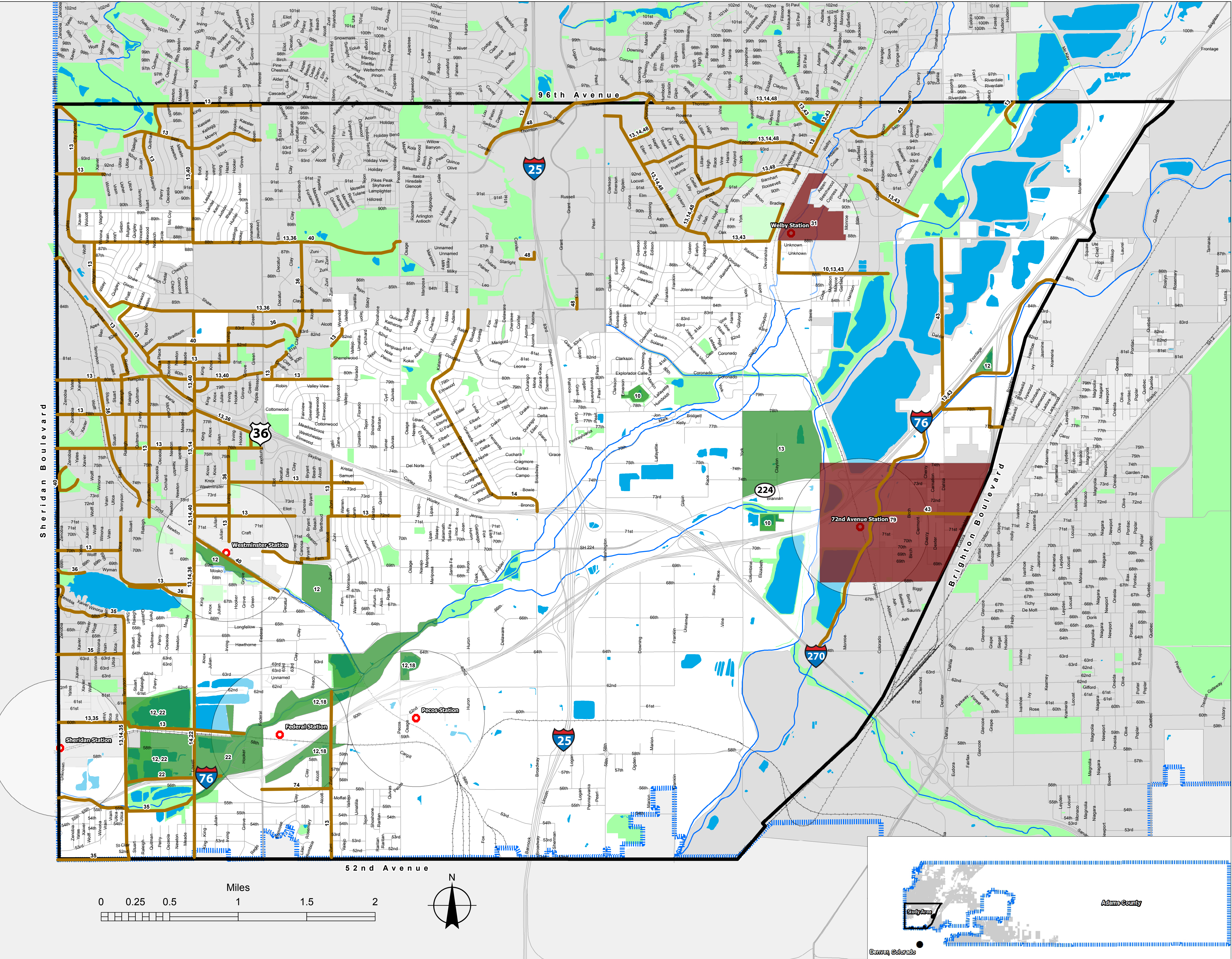


Environment, Health, Parks & Trails | Medio ambiente, salud, parques y senderos



Legend

- Adams County Boundary
- Study Area Boundary
- Unincorporated Land
- Future Rail Station
- County Streets
- County Rivers
- Waterbody
- County Rail
- City Limits
- Parks
- Half Mile Radius
- Non-Motorized Transportation Facilities
- Parks and Open Space
- Mixed Use with Open Space Element

- Plan ID

Plan ID Key

Plan ID	Plan/Study/Report Name	Agency
10	Welby: Where Deep Roots Grow	Adams County
12	Imagine Adams County	Adams County
13	Open Space, Parks & Trails Master Plan	Adams County
14	Imagine Adams County Transportation Plan	Adams County
22	Southwest Adams County Framework for Future Planning	Adams County
35	Arvada Comprehensive Plan	City of Arvada
36	Trails Master Plan	City of Westminster
40	Westminster Comprehensive Plan	City of Westminster
43	Commerce City Transportation Plan	City of Commerce City
48	Thornton Transportation Plan	City of Thornton
74	Clear Creek Valley TOD Plan	Adams County

Policies from Previous Plans

Plan ID	Plan/Study/Report Name	Policies & Strategies
10	Welby: Where Deep Roots Grow	<ul style="list-style-type: none"> -Seek to create a greener and healthier environment for the community through respectful use, care and maintenance of the area's overall environment to support a high quality of life. -Provide a variety of recreational opportunities and preserve open space.
12	Imagine Adams County	<ul style="list-style-type: none"> -Preserve water corridors and reservoirs. -Protect culturally and historically significant areas. -Provide a variety of recreation opportunities. -Conserve high quality agricultural lands and address transitions from agricultural land. -Reduce risk and effects of natural hazards. -Increase public awareness of natural hazards
13	Open Space, Parks & Trails Master Plan	<ul style="list-style-type: none"> -Promote an open space system that conserves agricultural lands; preserves wildlife habitats and corridors; and protects and improves important natural and scenic resources.
20	Transit Oriented Development and Rail Station Area Planning Guidelines	<ul style="list-style-type: none"> -Open Space and Gateway Concept - Identification of Station Area open space, greenways, parks, trails, wildlife corridors, watersheds, and important gateways. This concept should identify the size, location, and designation (public vs. private) of spaces and linkages to the countywide parks and trails system.
21	Mineral Extraction Plan	<ul style="list-style-type: none"> -Address conservation of natural areas - increase setbacks of mining operations from rivers and streams. -Establish a policy for on- or off-site set-aside lands to offset habitat loss. -Permitting process - Institute periodic review of Conditional Use Permits. Authorize shorter time frames on Conditional Use Permits.
23	Riverdale Road Corridor Plan	<ul style="list-style-type: none"> -Corridor enhancement - Enhance parks to expand recreational opportunities. -Develop environmental education and interpretive programs.
40	Westminster Comprehensive Plan	<ul style="list-style-type: none"> -Pursue park landscaping and planting schemes that will reduce water consumption.
44	Northglenn Comprehensive Plan	<ul style="list-style-type: none"> -Provide for the recreational and tourism needs of city residents and visitors. -Encourage partnerships between and among municipalities, other jurisdictions, and the private sector to promote open space conservation, parkland creation, trailways and corridors.

MAKING CONNECTIONS/SW ADAMS COUNTY PLANNING AND IMPLEMENTATION PLAN

MAKING CONNECTIONS/PLANEACIÓN Y PLAN DE IMPLEMENTACIÓN EN EL SUROESTE DEL CONDADO DE ADAMS

