

# Making Connections: Map Atlas



## Contents

1	Project Overview.....	4
	Planning Area .....	4
	2015 Population .....	5
	2040 Population .....	6
	Percent Low Moderate Income Households .....	7
2	Land Use & Economic Development.....	8
	Existing Land Use .....	8
	Existing Zoning .....	9
	Improvement to Land Value Ratio .....	10
	Future Land Use .....	11
3	Housing & Neighborhoods.....	12
	Residential Zoning Allowed.....	12
	Age of Structures.....	13
4	TRANSPORTATION .....	14
	Roadway Classifications .....	14
	County-Owned Roads .....	15
	Speed Limits .....	16
	Pedestrian Facilities .....	17
	Bicycle Facilities .....	18
	Transit Facilities .....	19
5	Drainage & UTILITIES.....	20
	Water & Sanitation Districts .....	20



Water Distribution ..... 21

Sanitary Sewer ..... 22

Storm Sewer ..... 23

Floodplains ..... 24

6 Environment, Health, Parks & Trails ..... 25

    Environment..... 25

    Health ..... 26

    Parks & Trails..... 27

7 Identified Projects..... 28

    Land Use & Economic Development..... 28

    Housing & Neighborhoods ..... 29

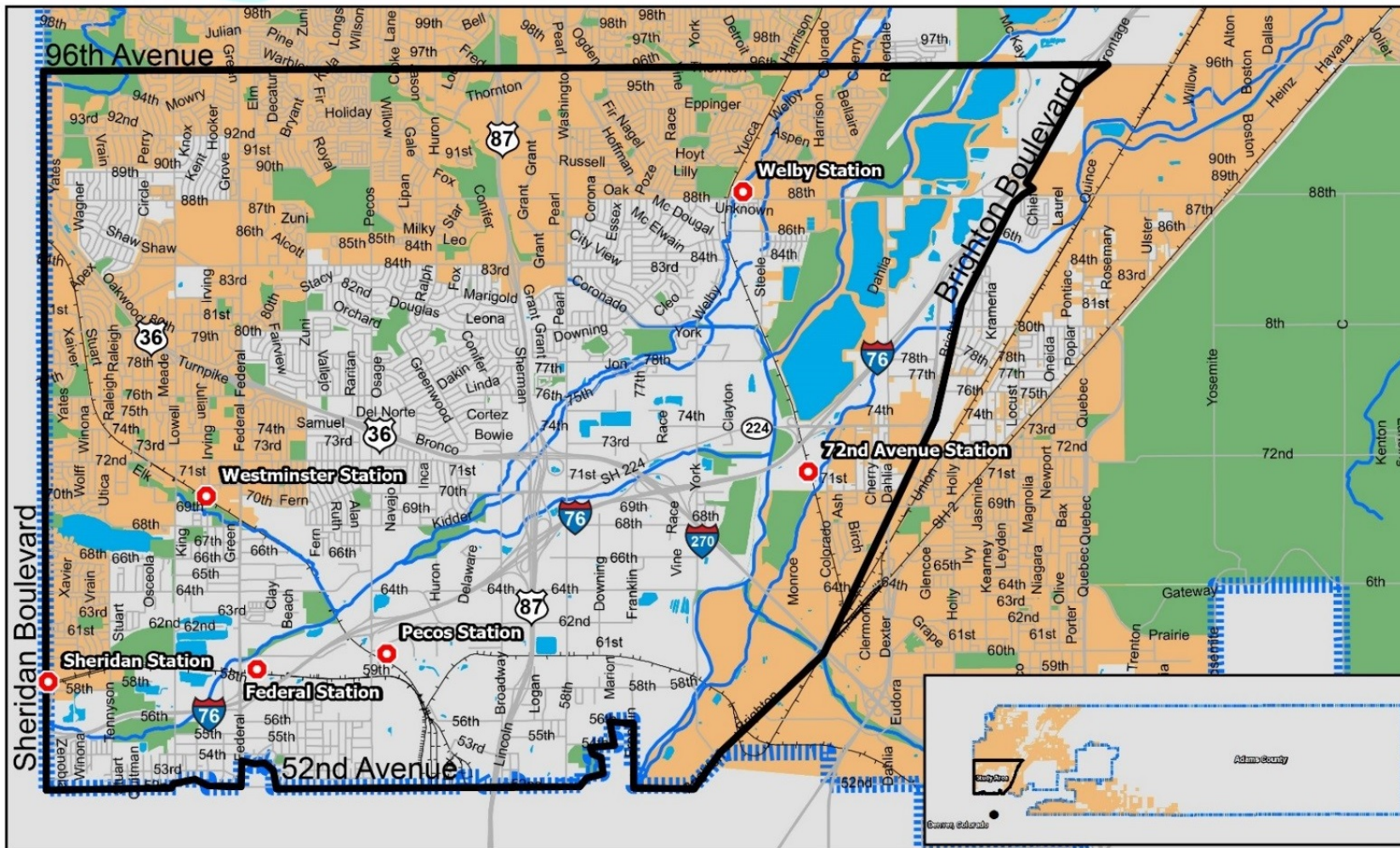
    Transportation ..... 30

    Drainage & Utilities ..... 31

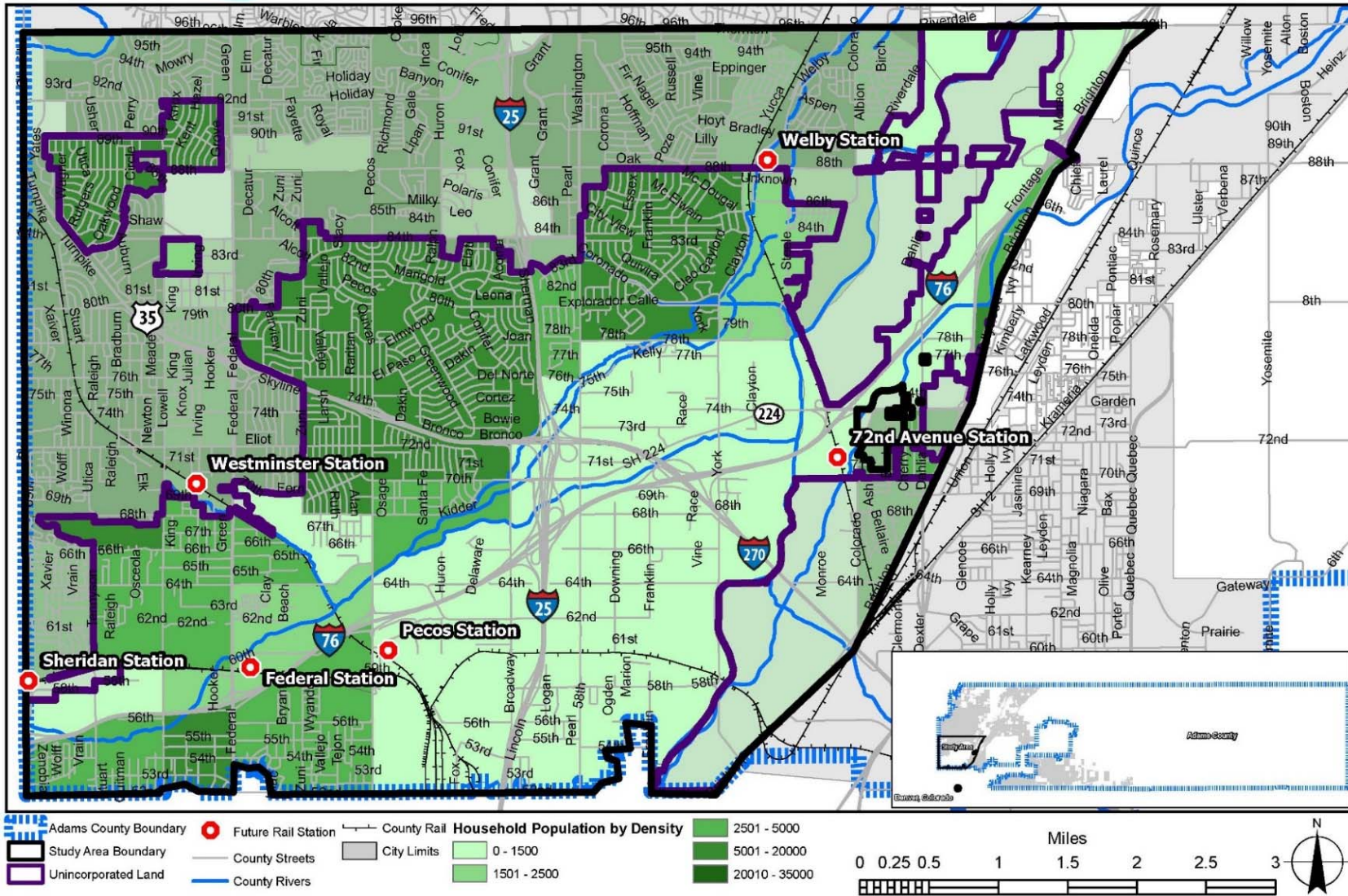
    Environment, Health, Parks & Trails ..... 32

# 1 PROJECT OVERVIEW

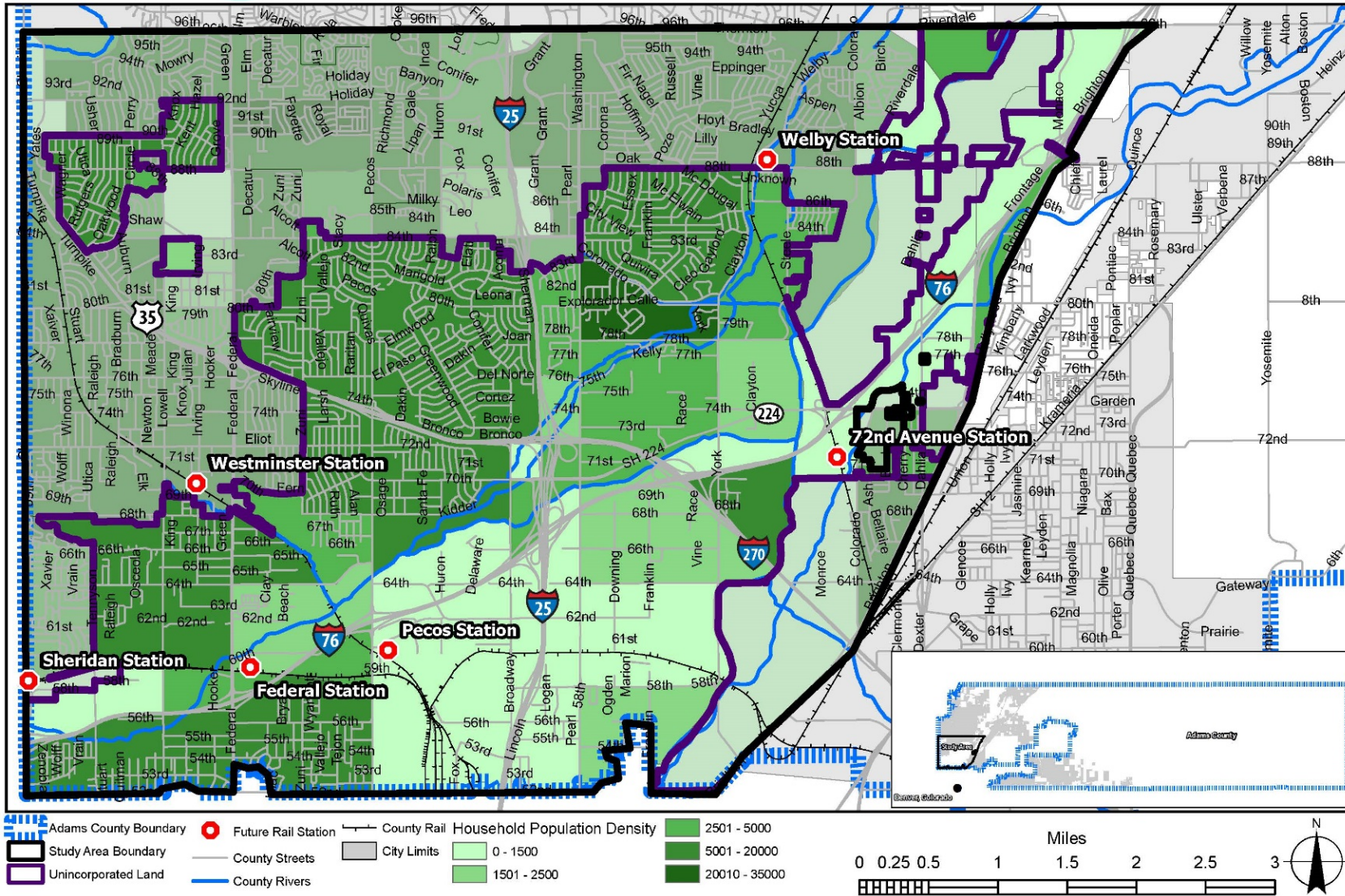
## Planning Area



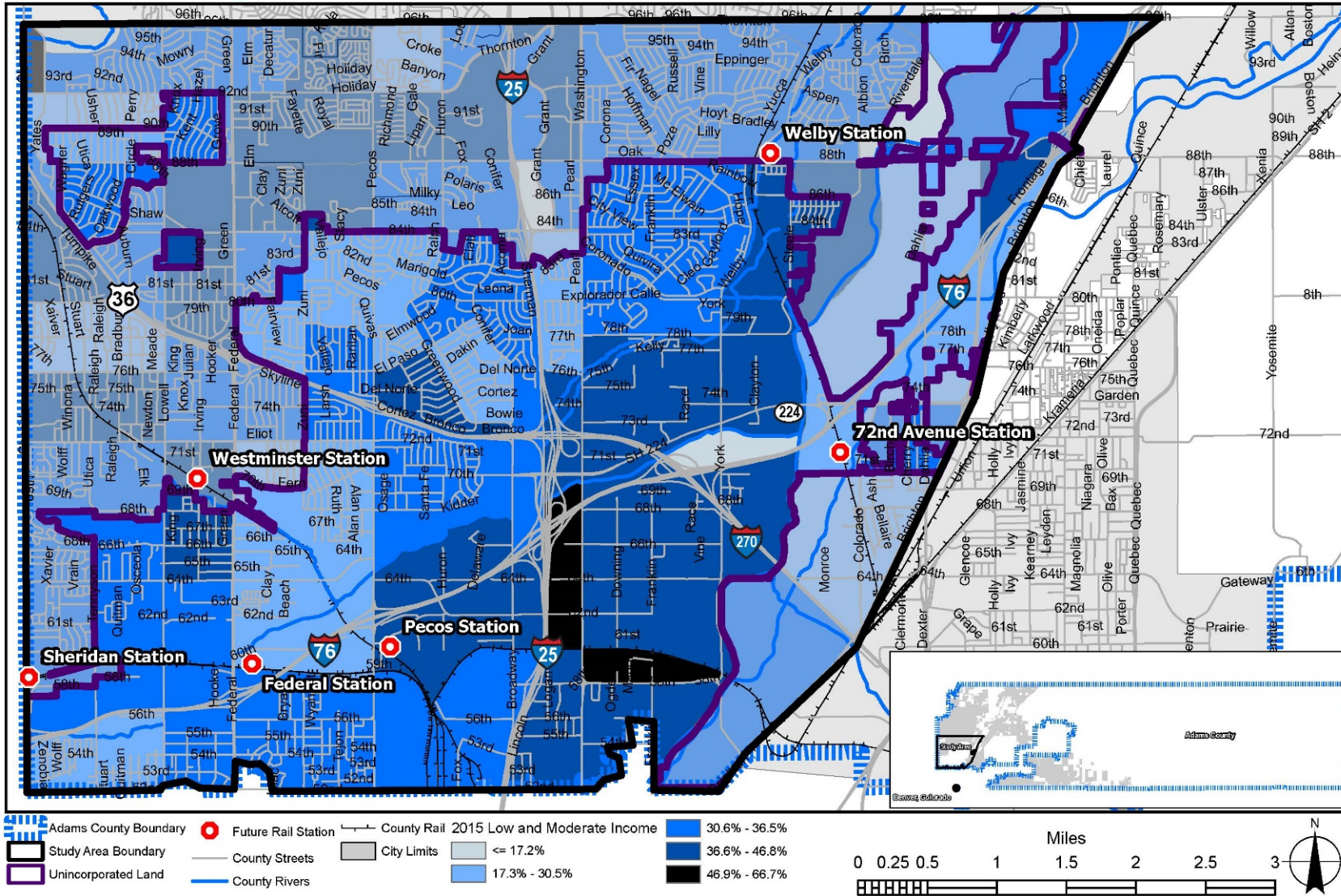
2015 Population



2040 Population

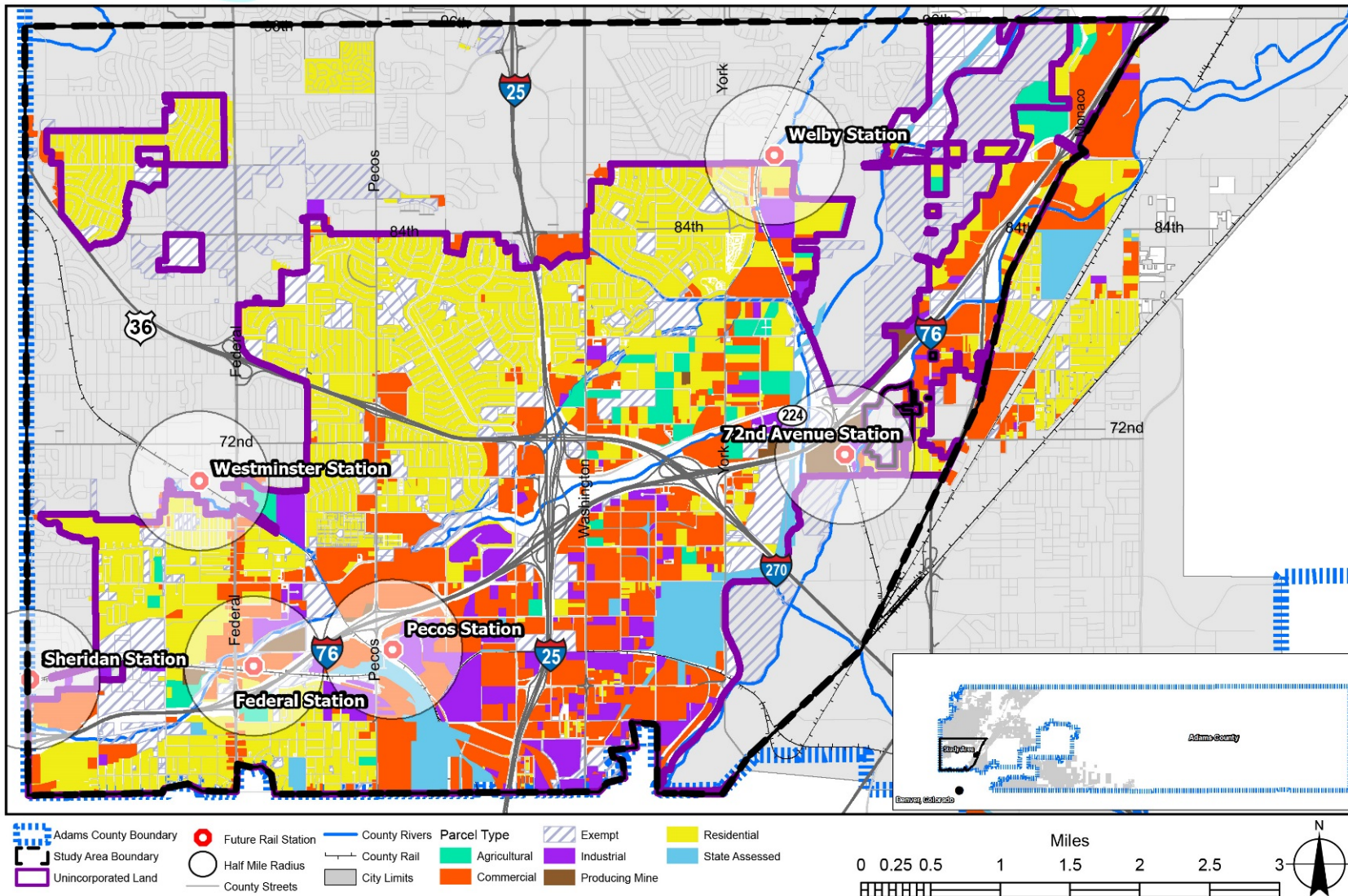


Percent Low Moderate Income Households



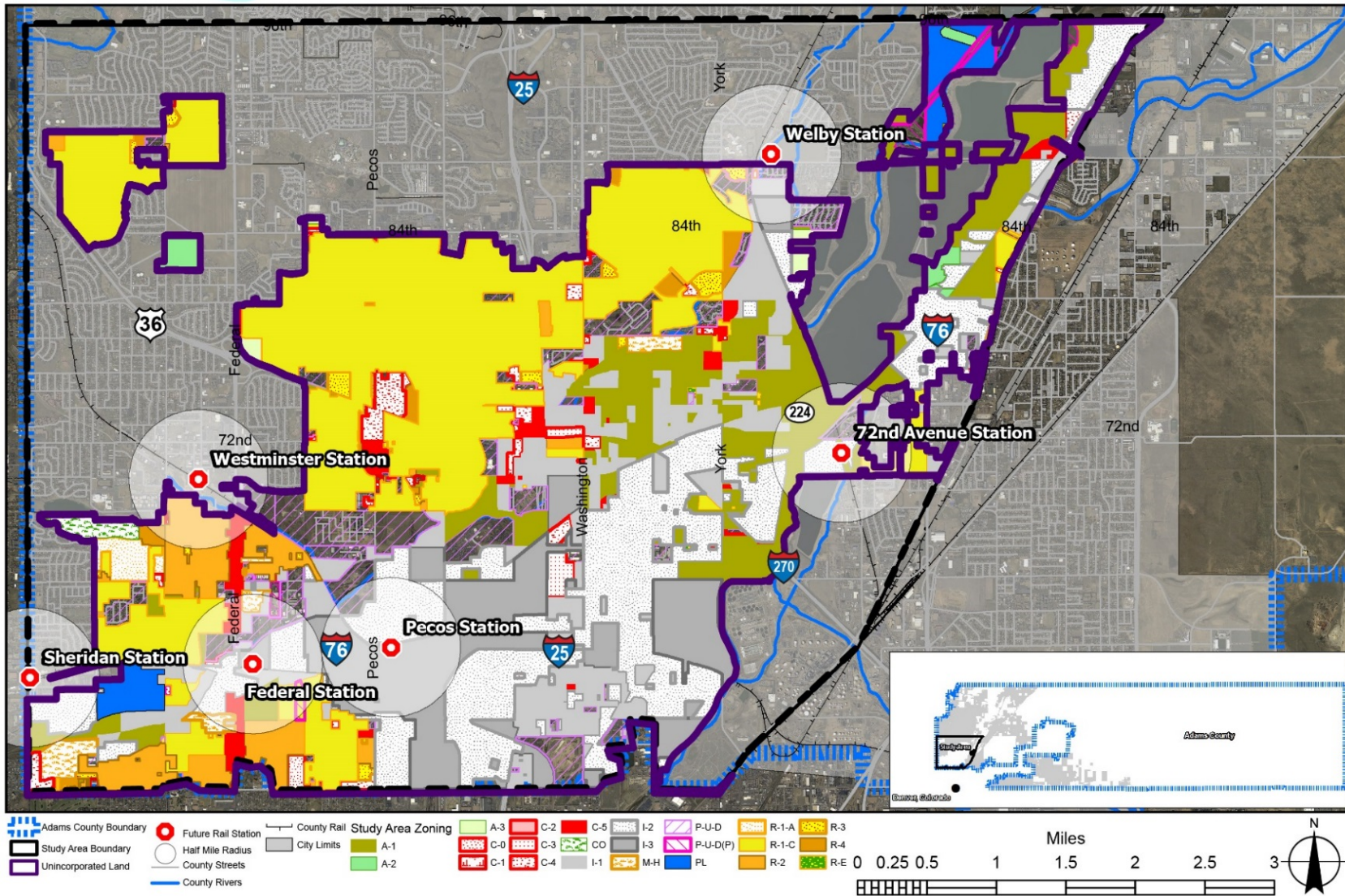
## 2 LAND USE & ECONOMIC DEVELOPMENT

### Existing Land Use

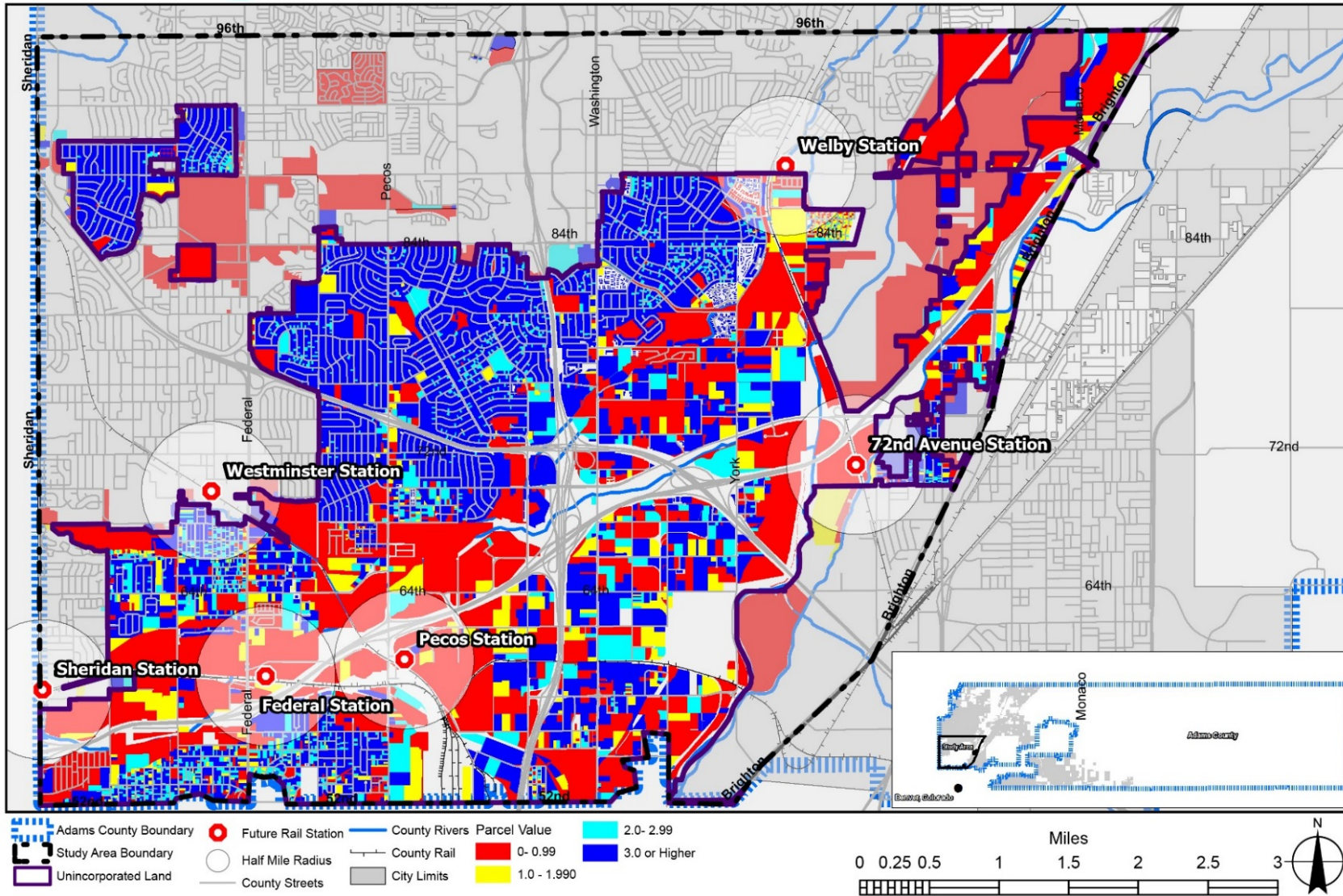




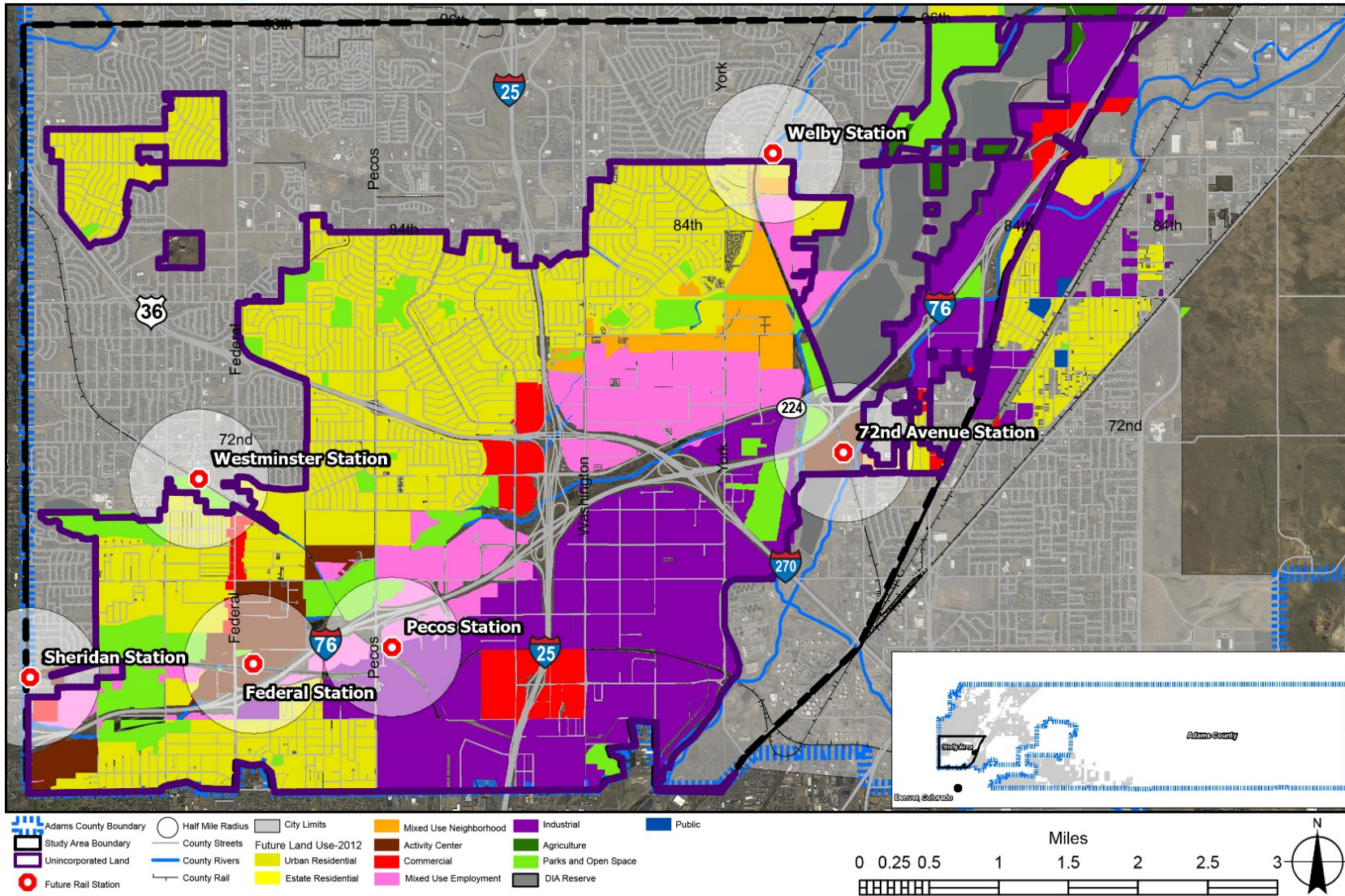
Existing Zoning



Improvement to Land Value Ratio

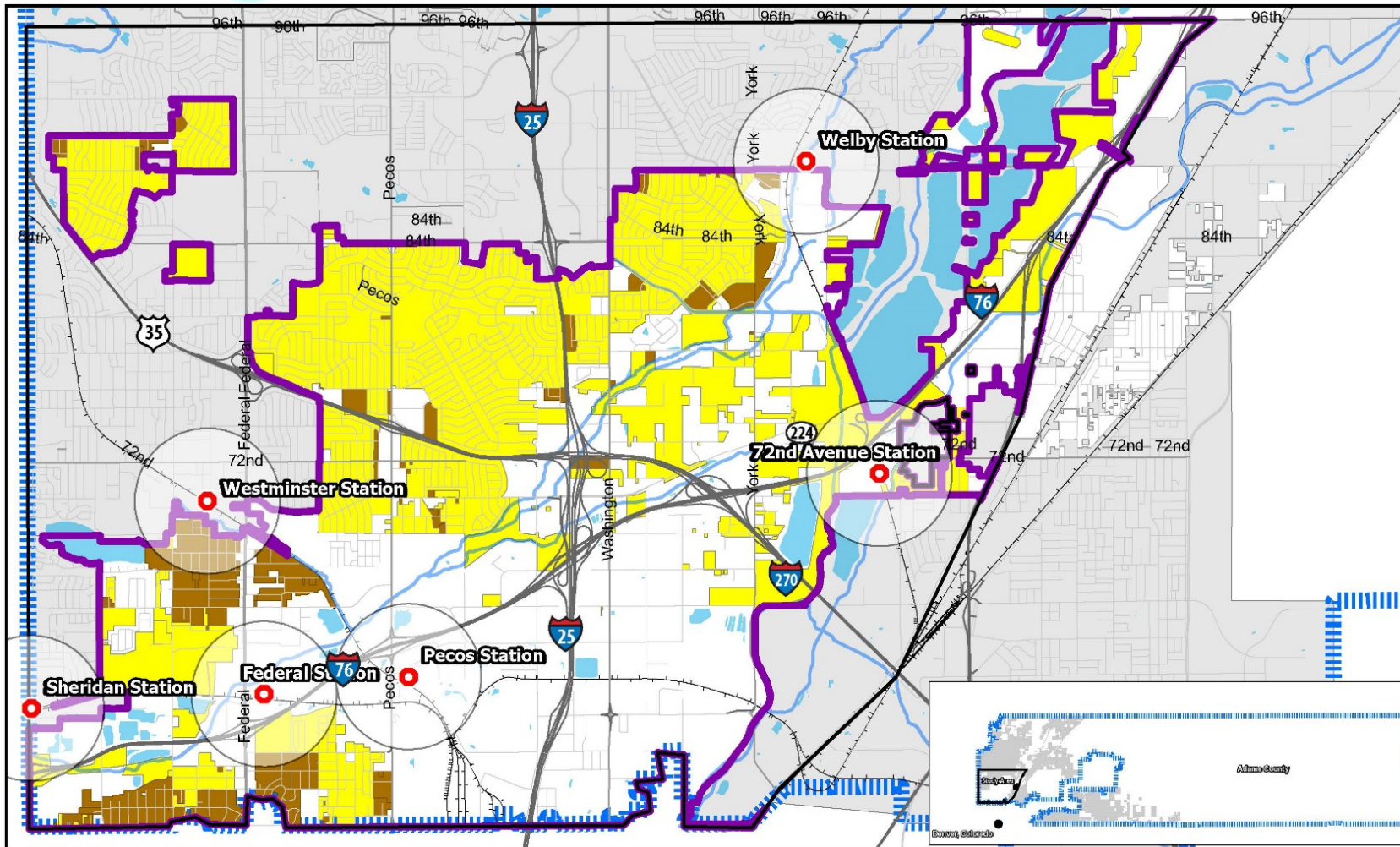


Future Land Use

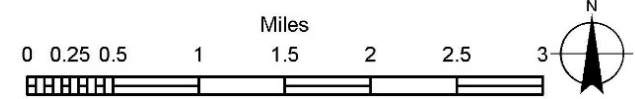


### 3 HOUSING & NEIGHBORHOODS

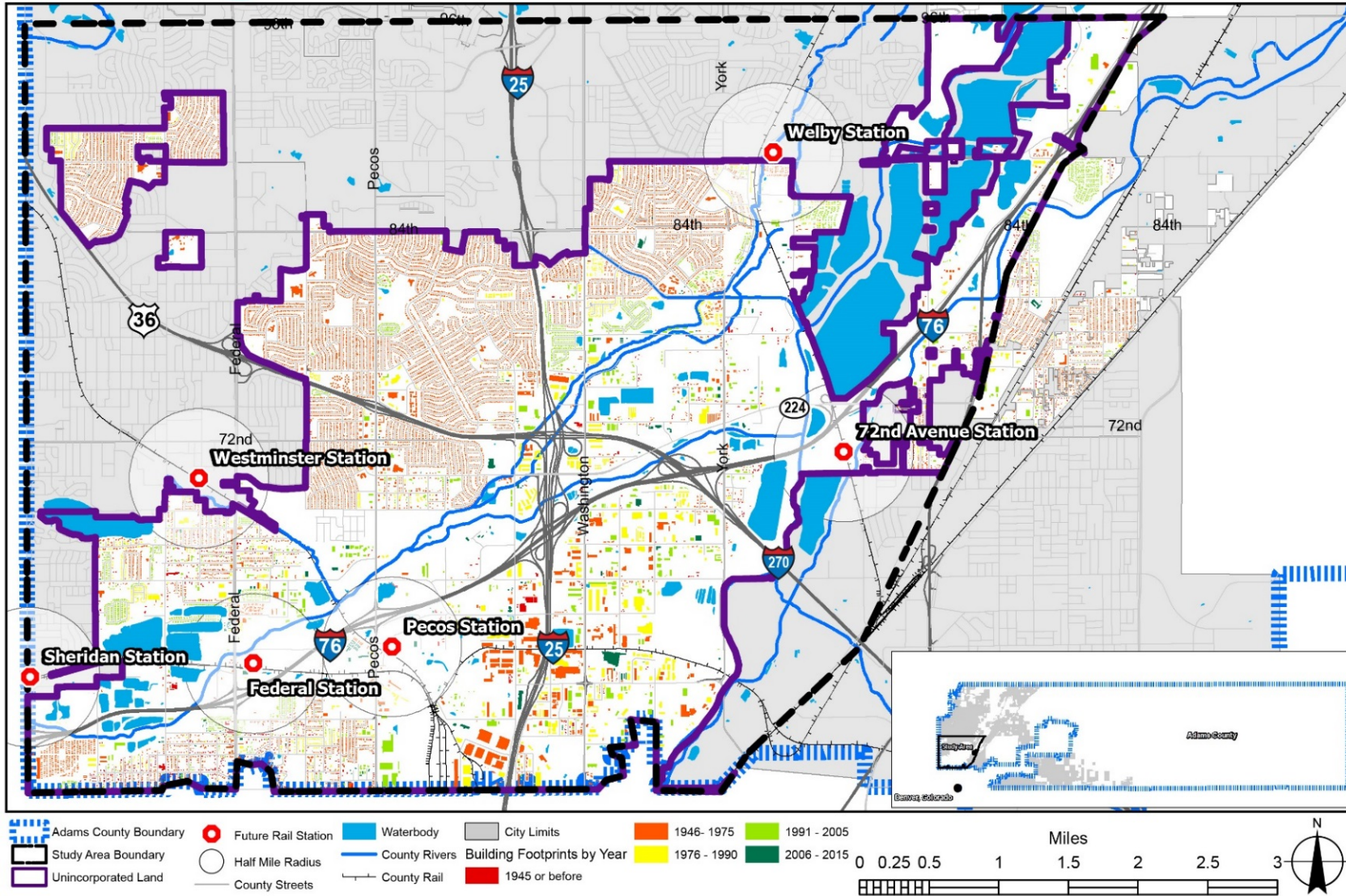
#### Residential Zoning Allowed



- |                       |                     |               |                           |
|-----------------------|---------------------|---------------|---------------------------|
| Adams County Boundary | Future Rail Station | County Rivers | <b>Residential Zoning</b> |
| Study Area Boundary   | Half Mile Radius    | County Rail   | Single Family             |
| Unincorporated Land   | County Streets      | City Limits   | Multi-Family              |

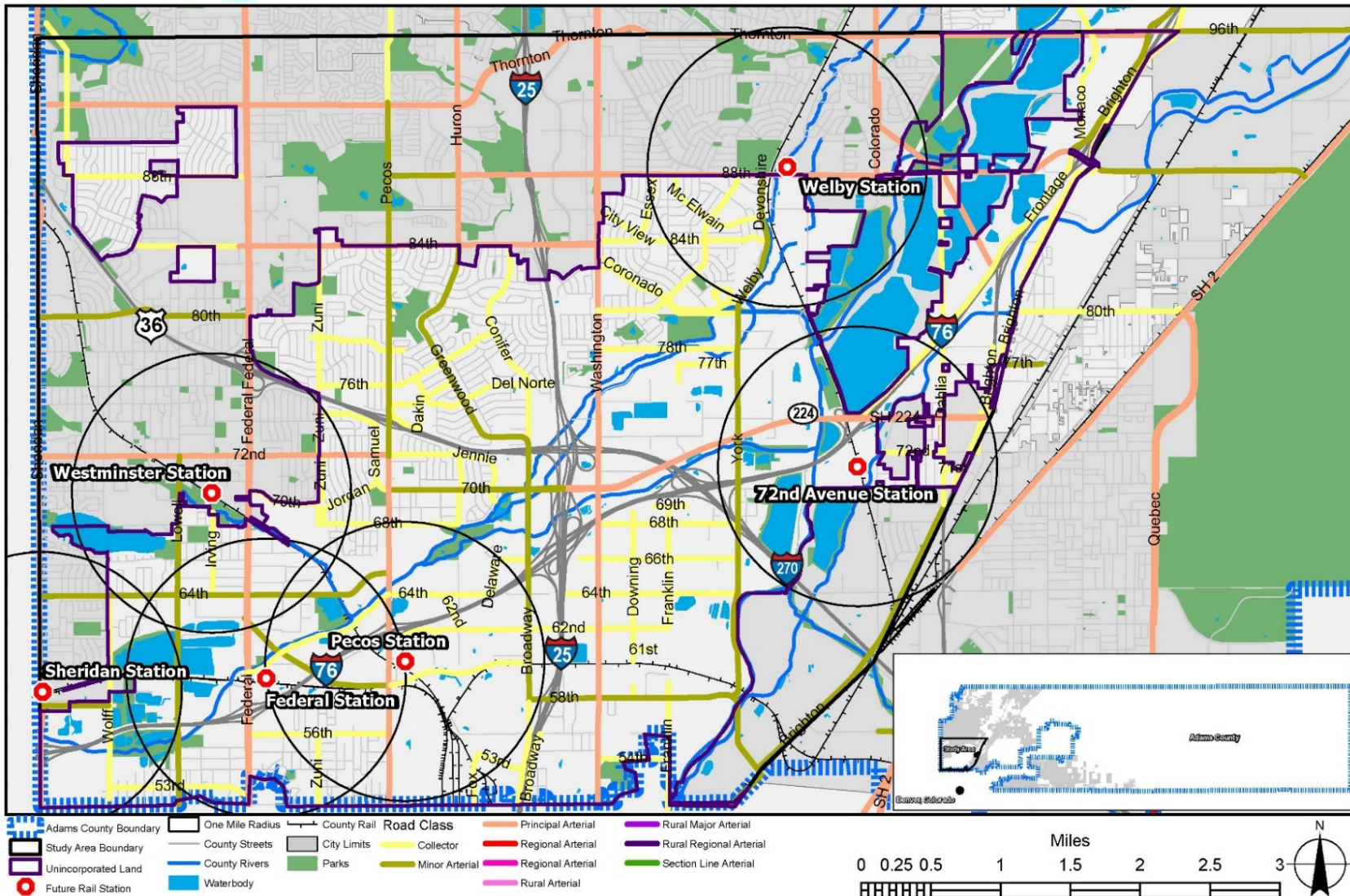


Age of Structures

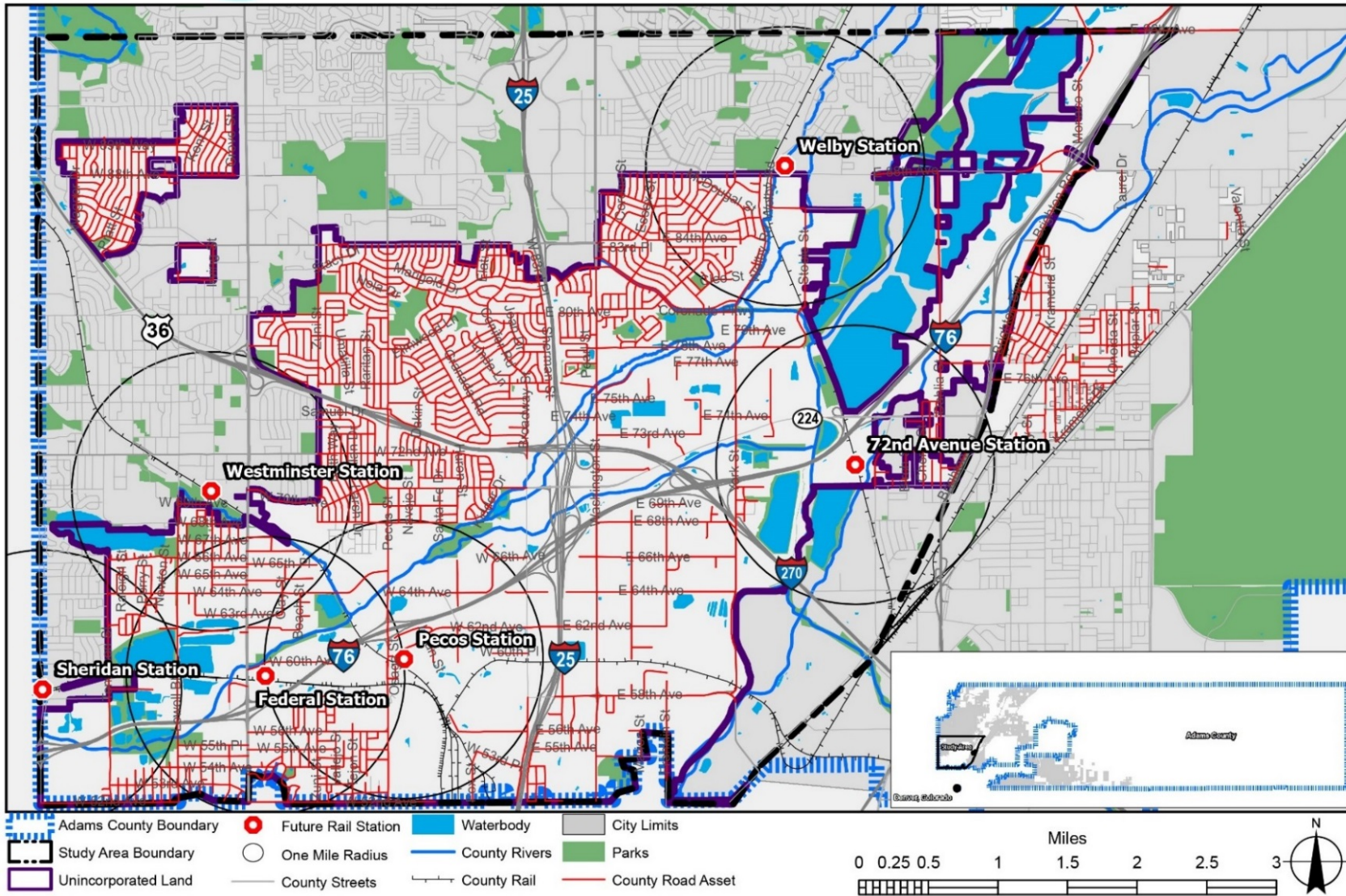


## 4 TRANSPORTATION

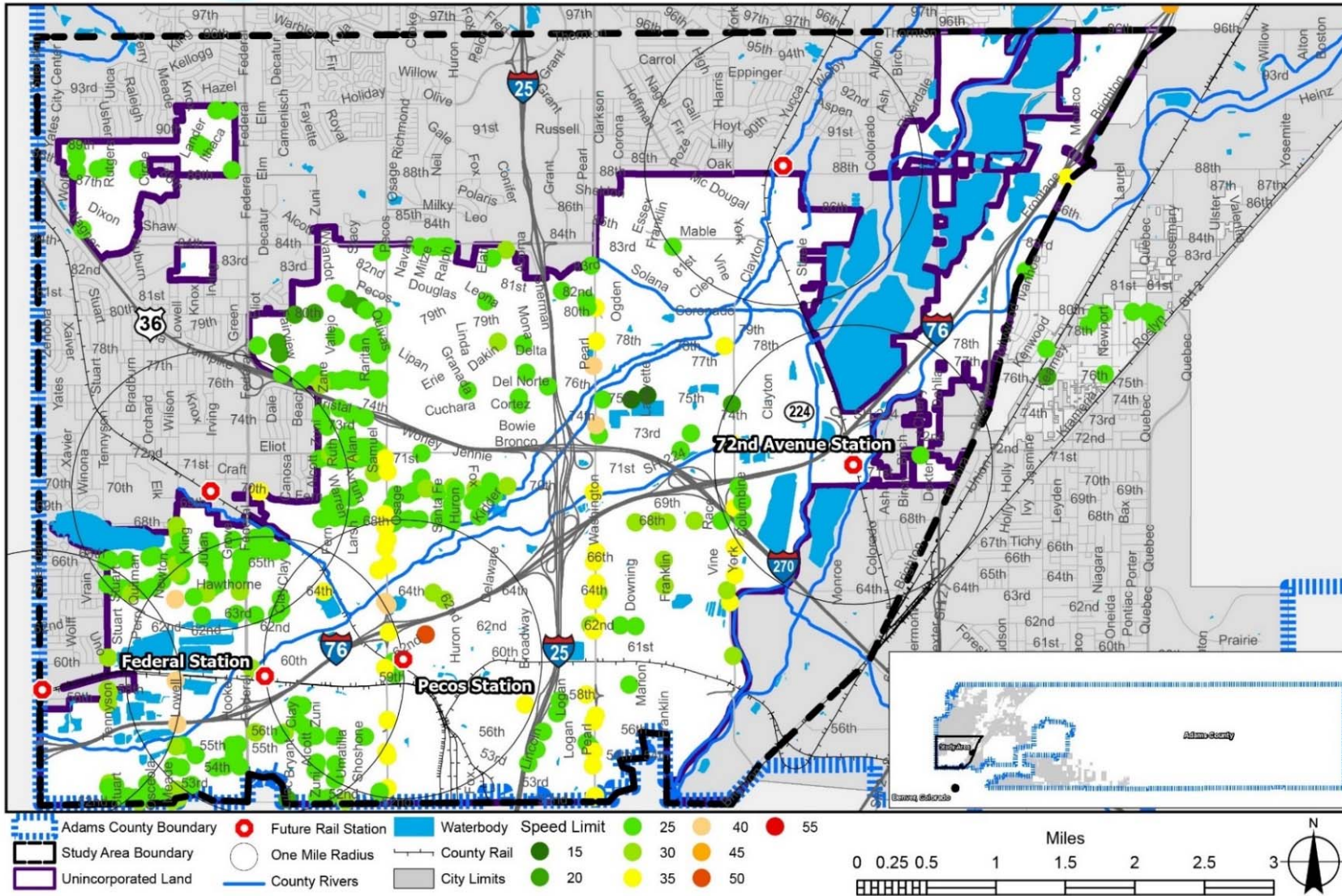
### Roadway Classifications



County-Owned Roads

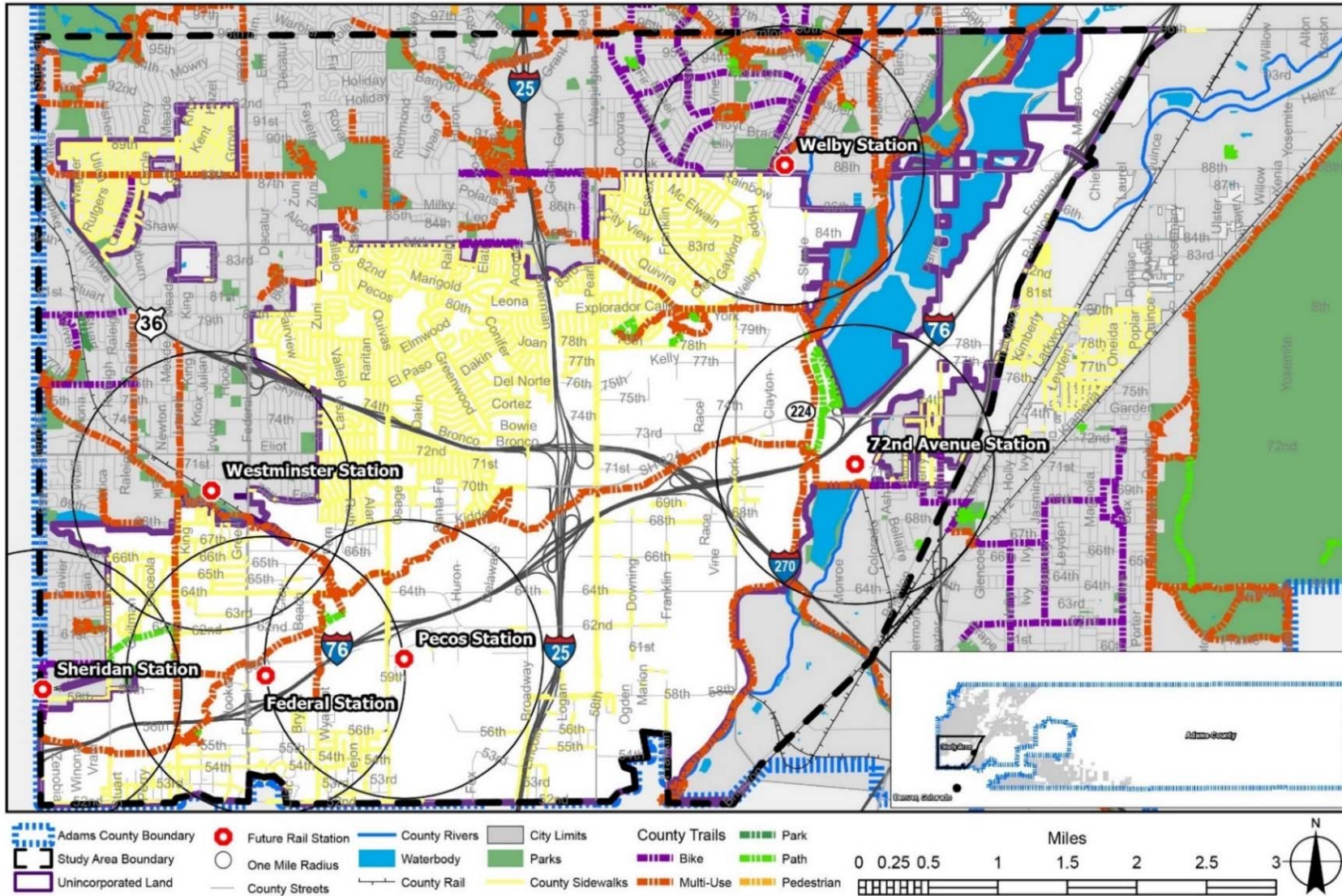


Speed Limits

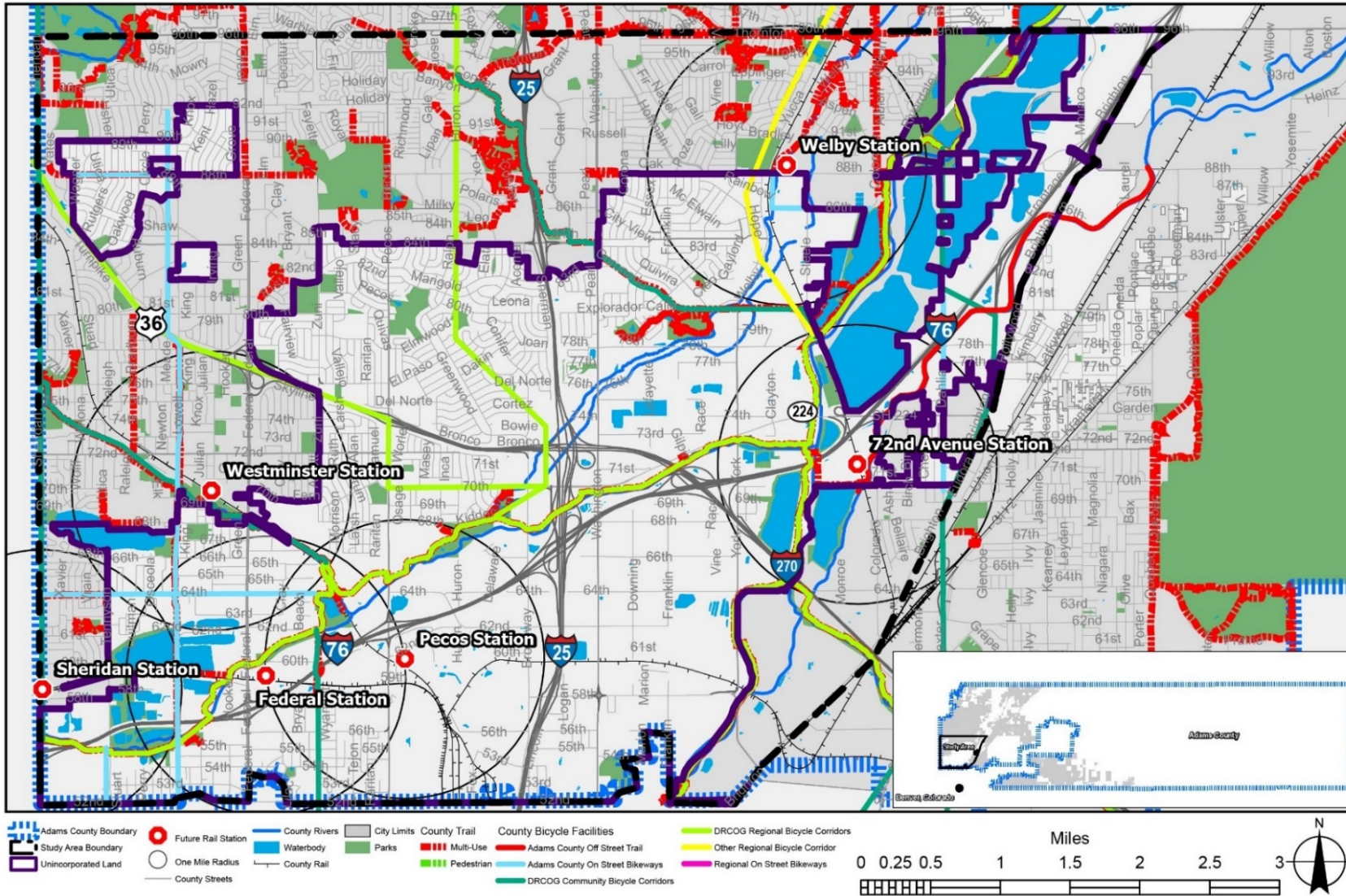




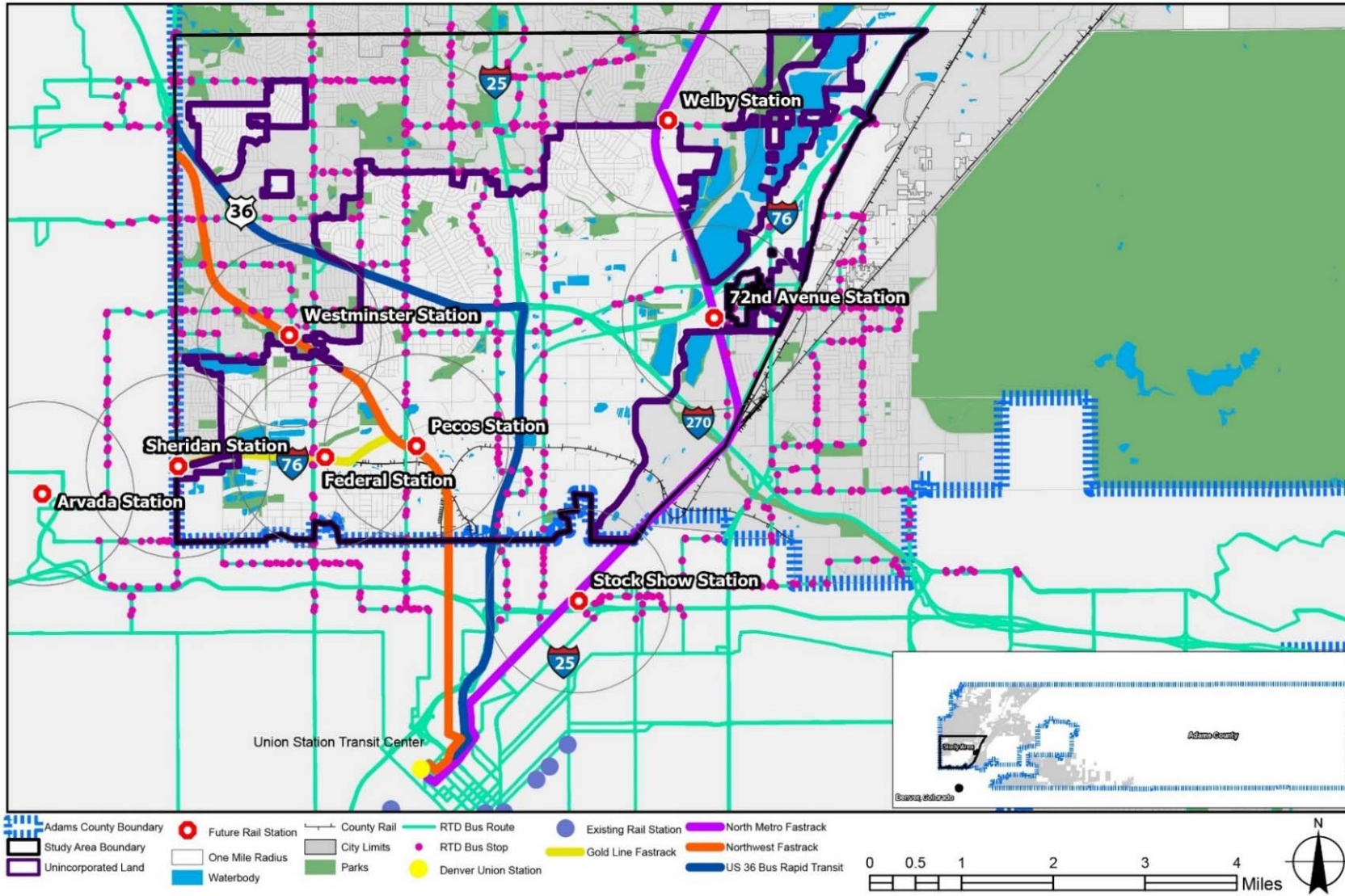
Pedestrian Facilities



Bicycle Facilities

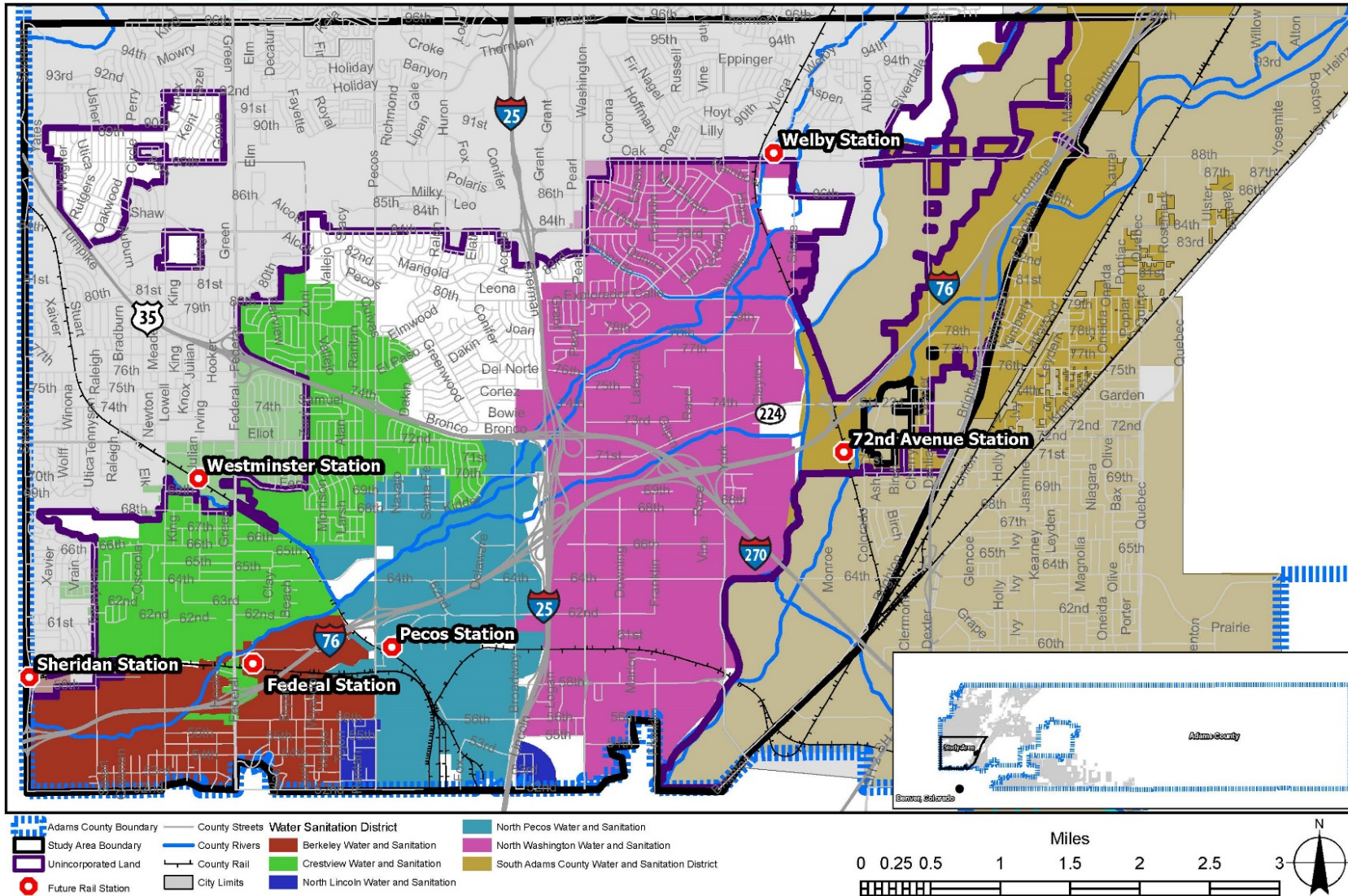


Transit Facilities

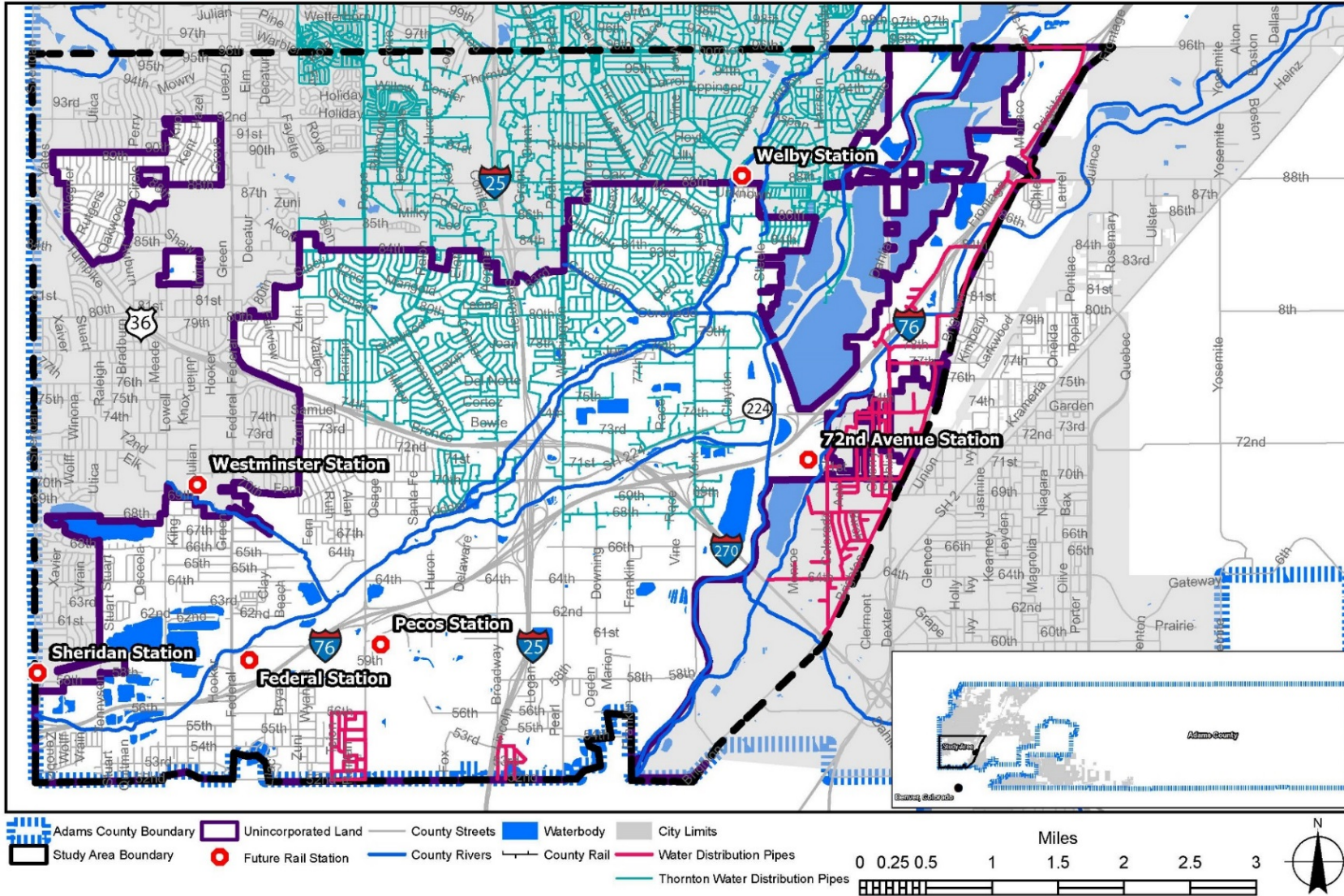


## 5 DRAINAGE & UTILITIES

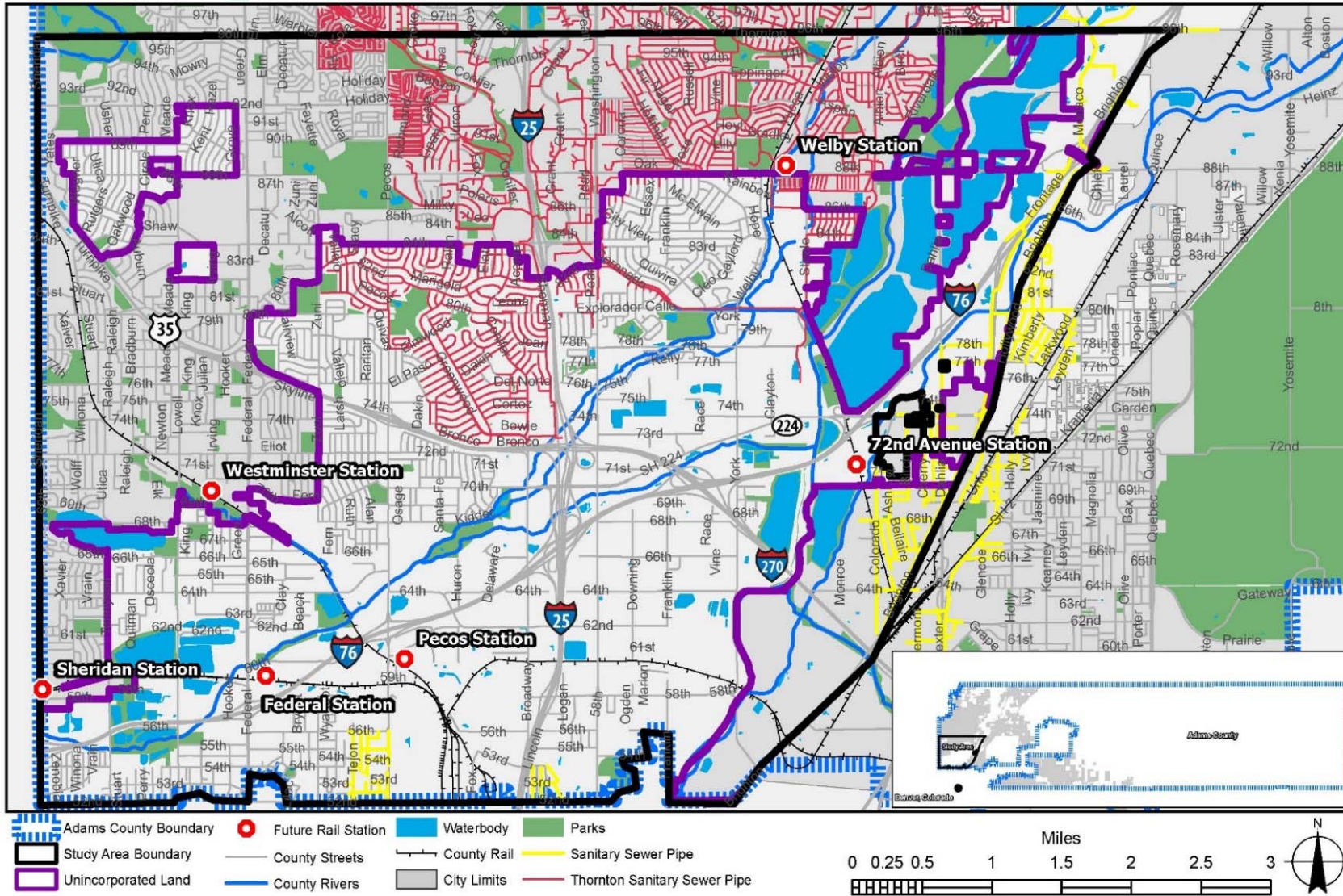
### Water & Sanitation Districts



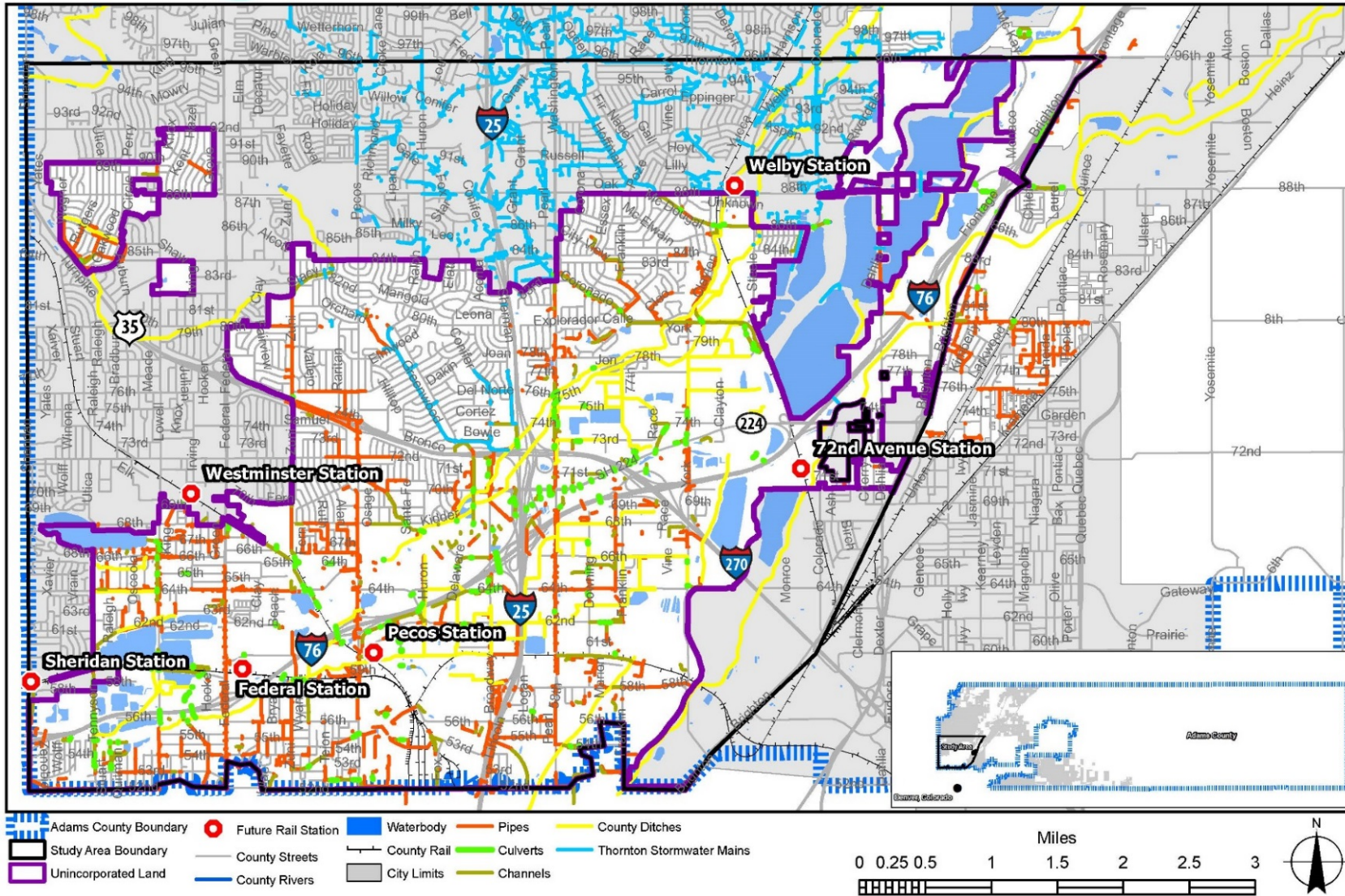
Water Distribution



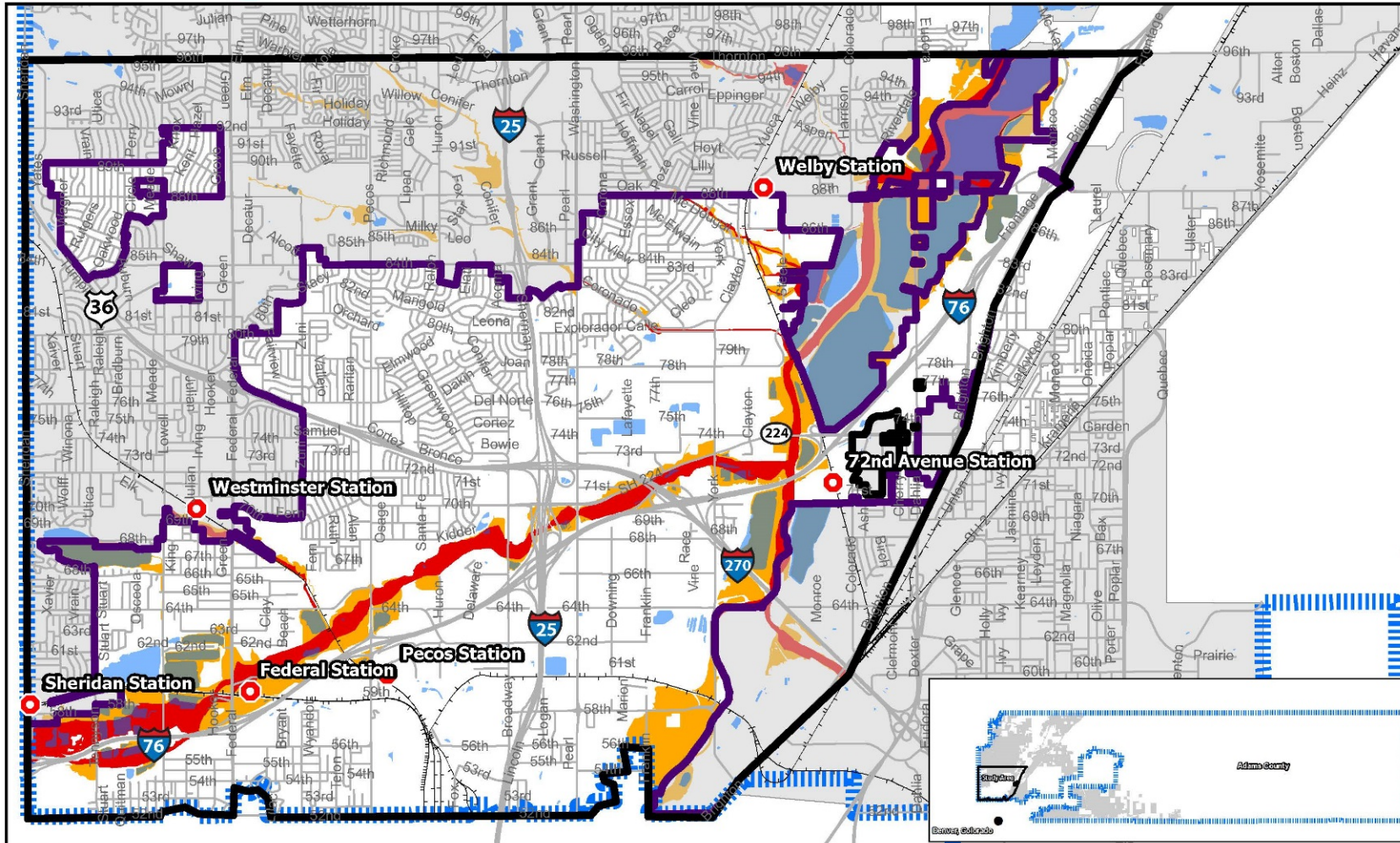
Sanitary Sewer



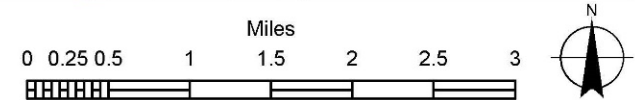
Storm Sewer



Floodplains



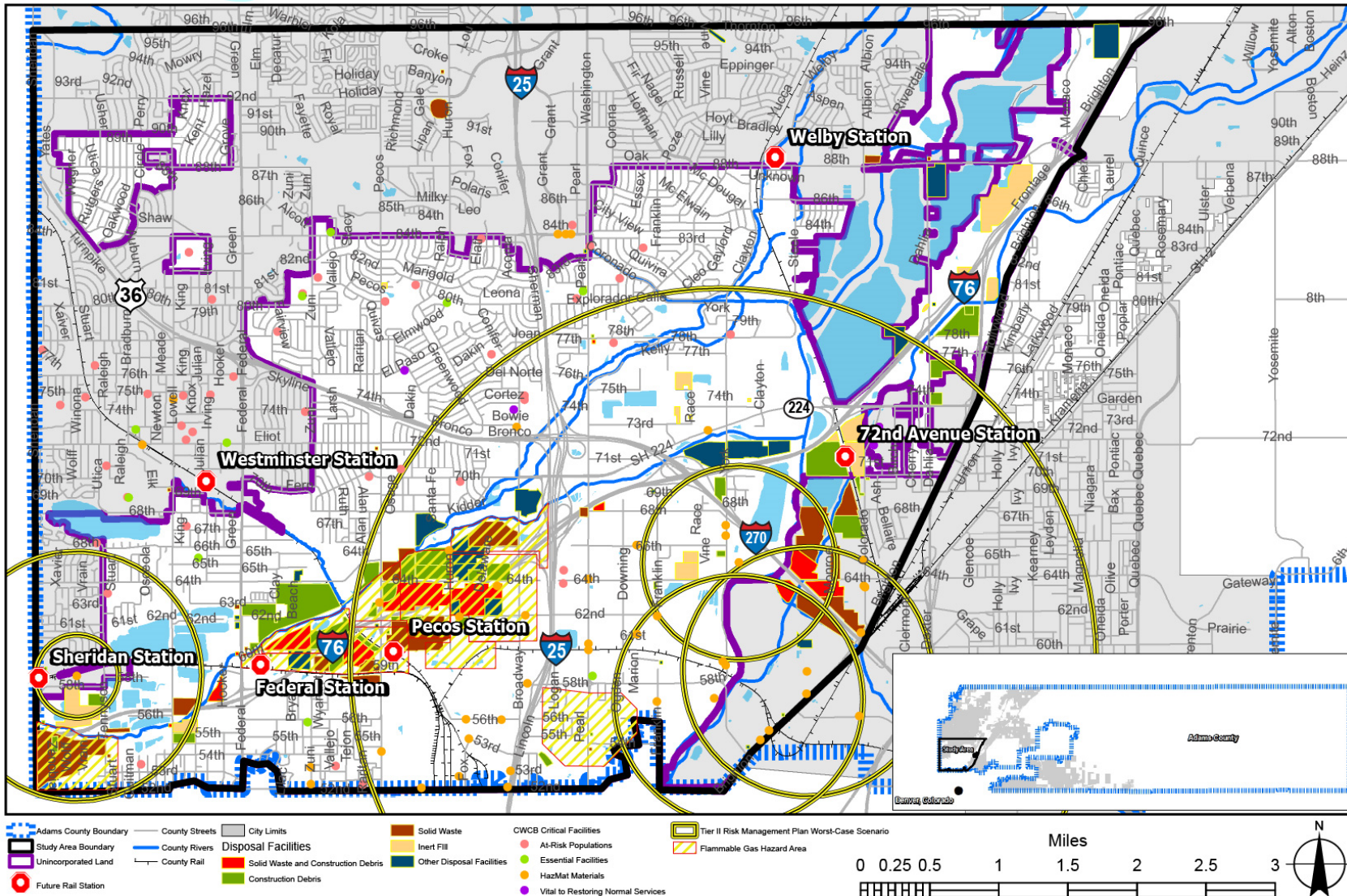
- Adams County Boundary
- Future Rail Station
- City Limits
- Hazard Zone Subtype**
- Study Area Boundary
- County Streets
- Waterbody
- 100 Year Floodplain
- Unincorporated Land
- County Rail
- Floodway



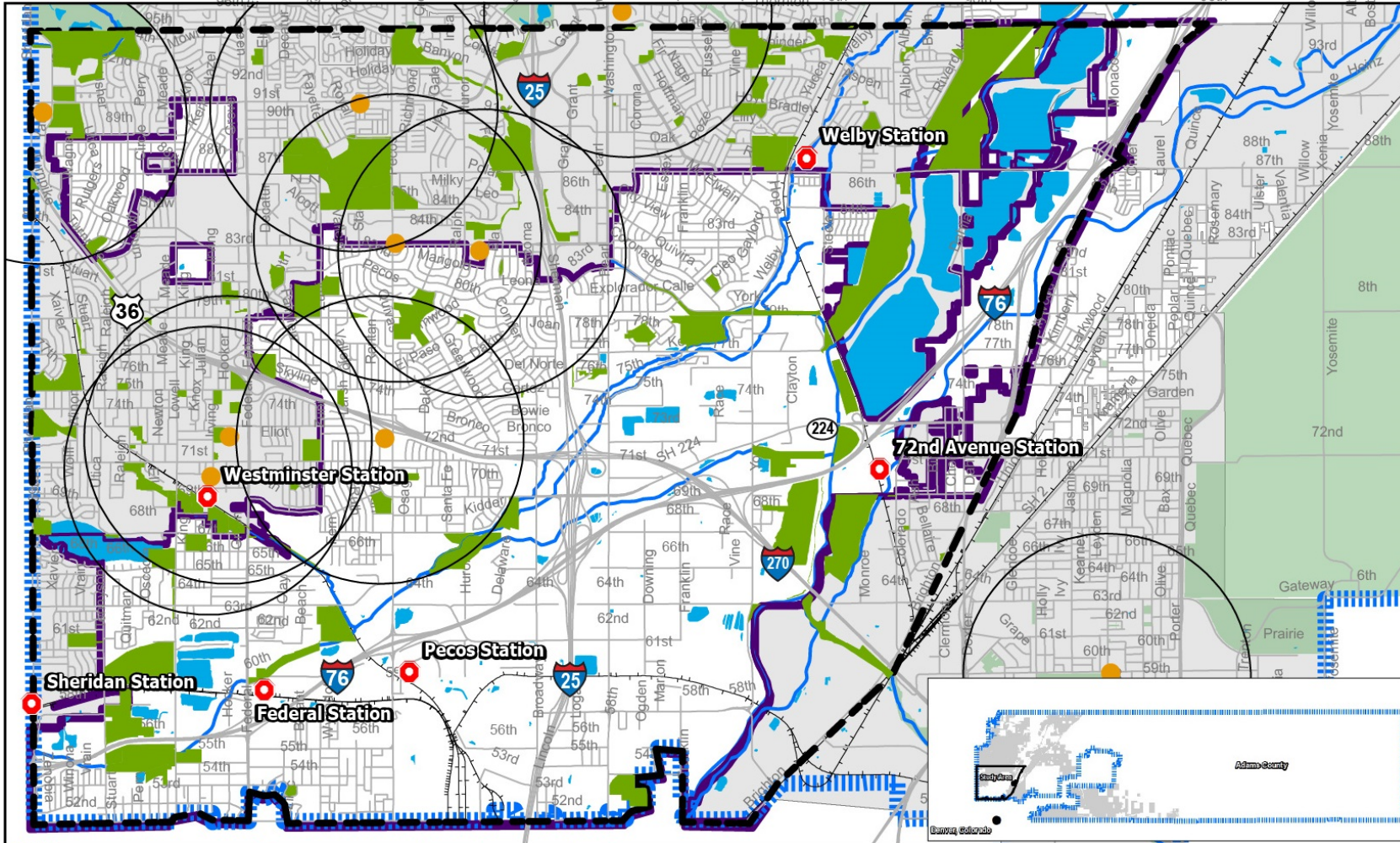


## 6 ENVIRONMENT, HEALTH, PARKS & TRAILS

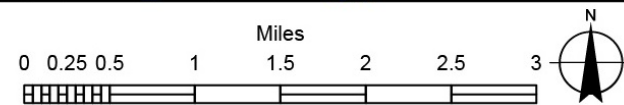
### Environment



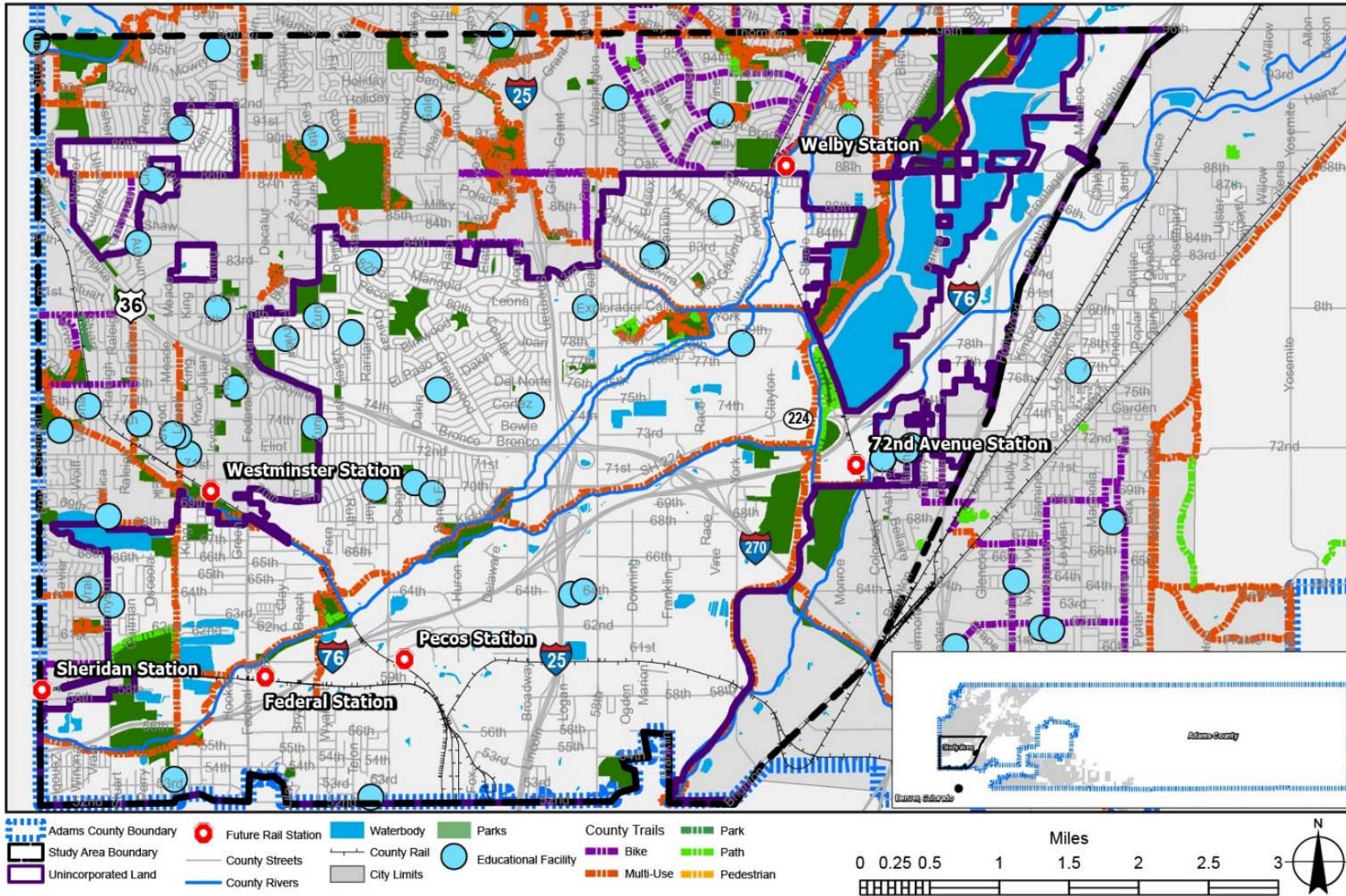
Health



- Adams County Boundary
- Future Rail Station
- Waterbody
- Parks
- Study Area Boundary
- County Streets
- County Rail
- Grocery Store
- Unincorporated Land
- County Rivers
- City Limits
- One Mile Radius

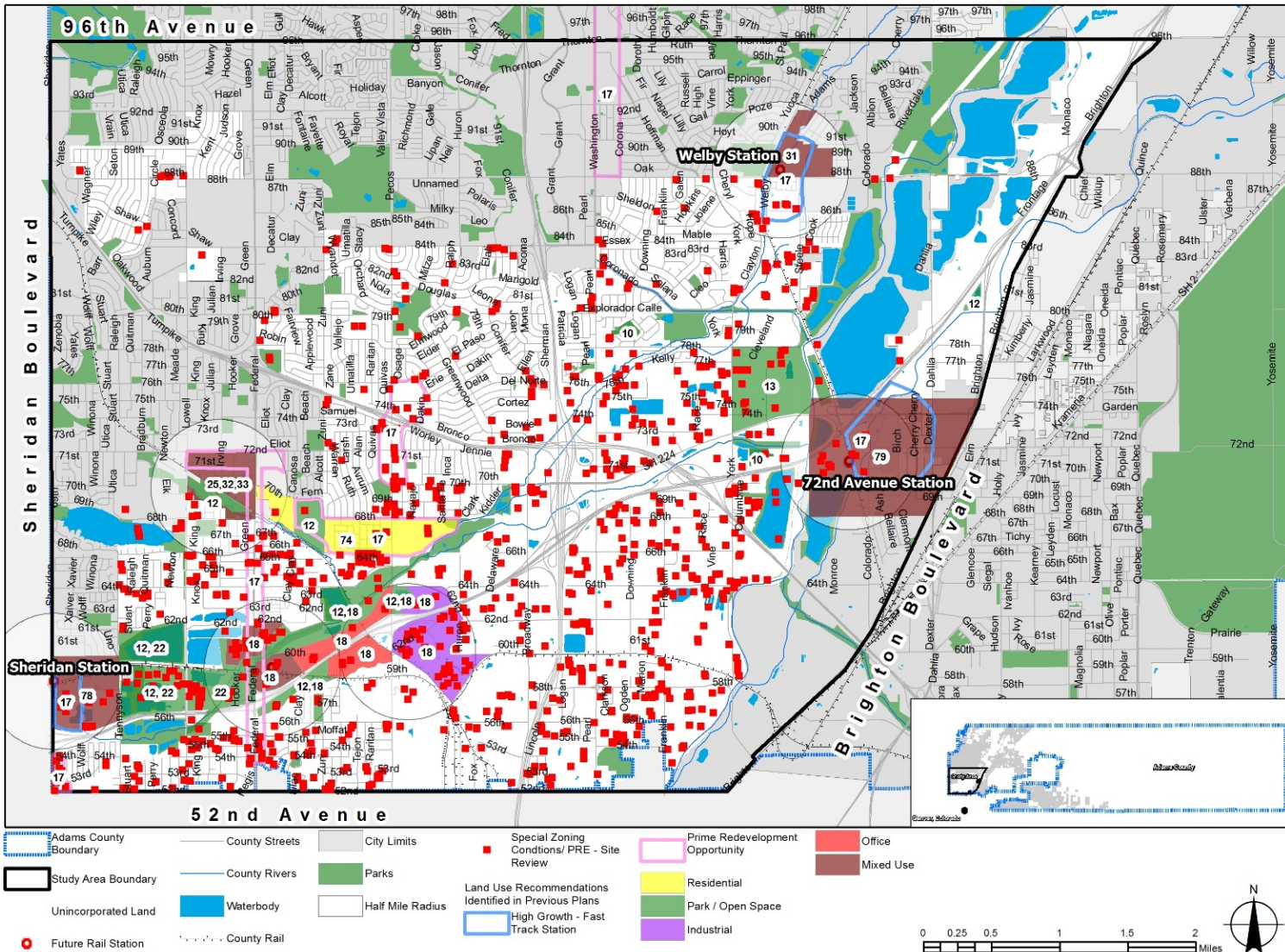


Parks & Trails

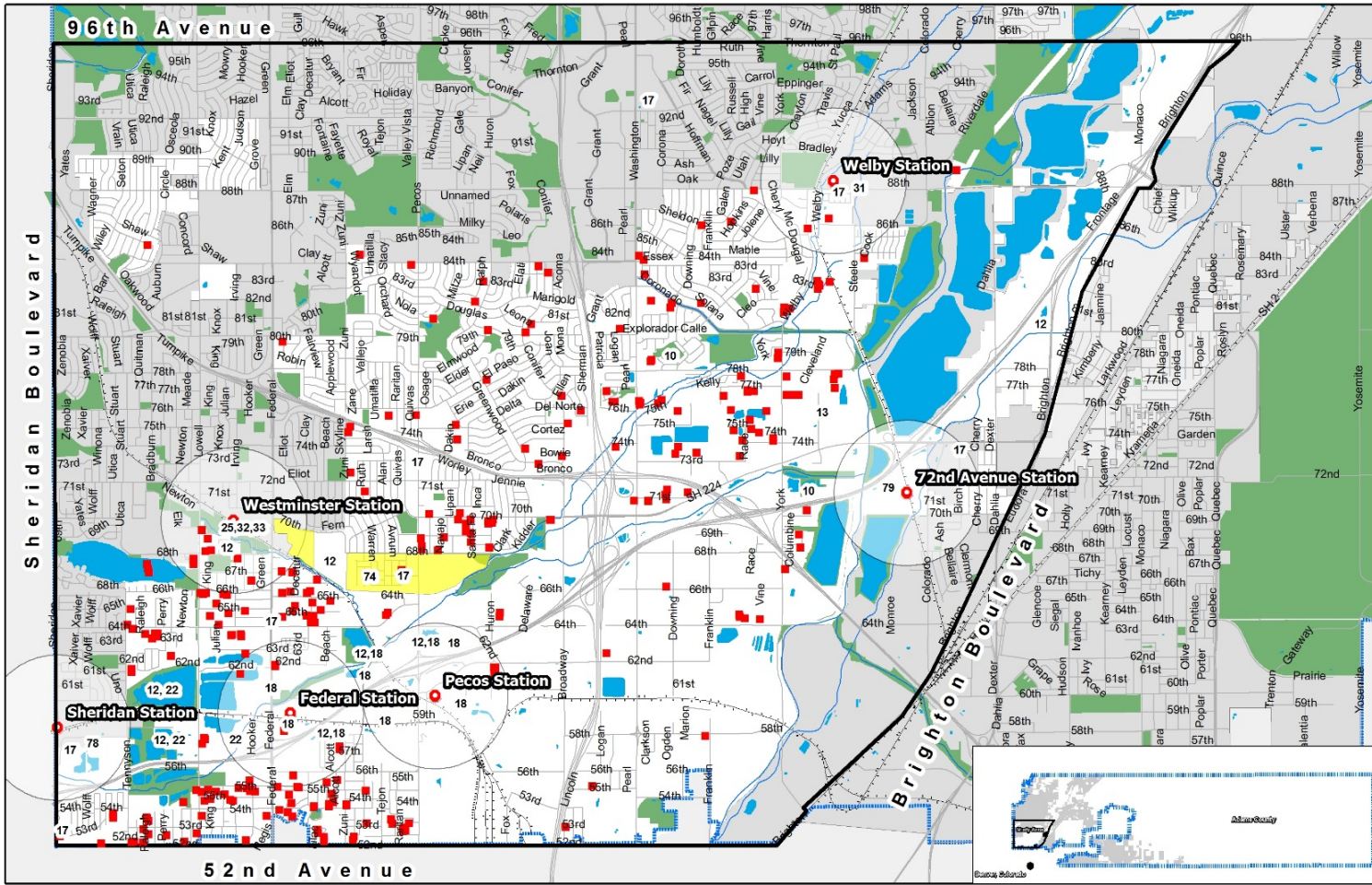


# 7 IDENTIFIED PROJECTS

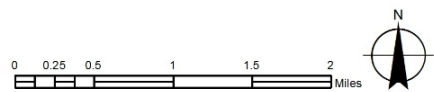
## Land Use & Economic Development



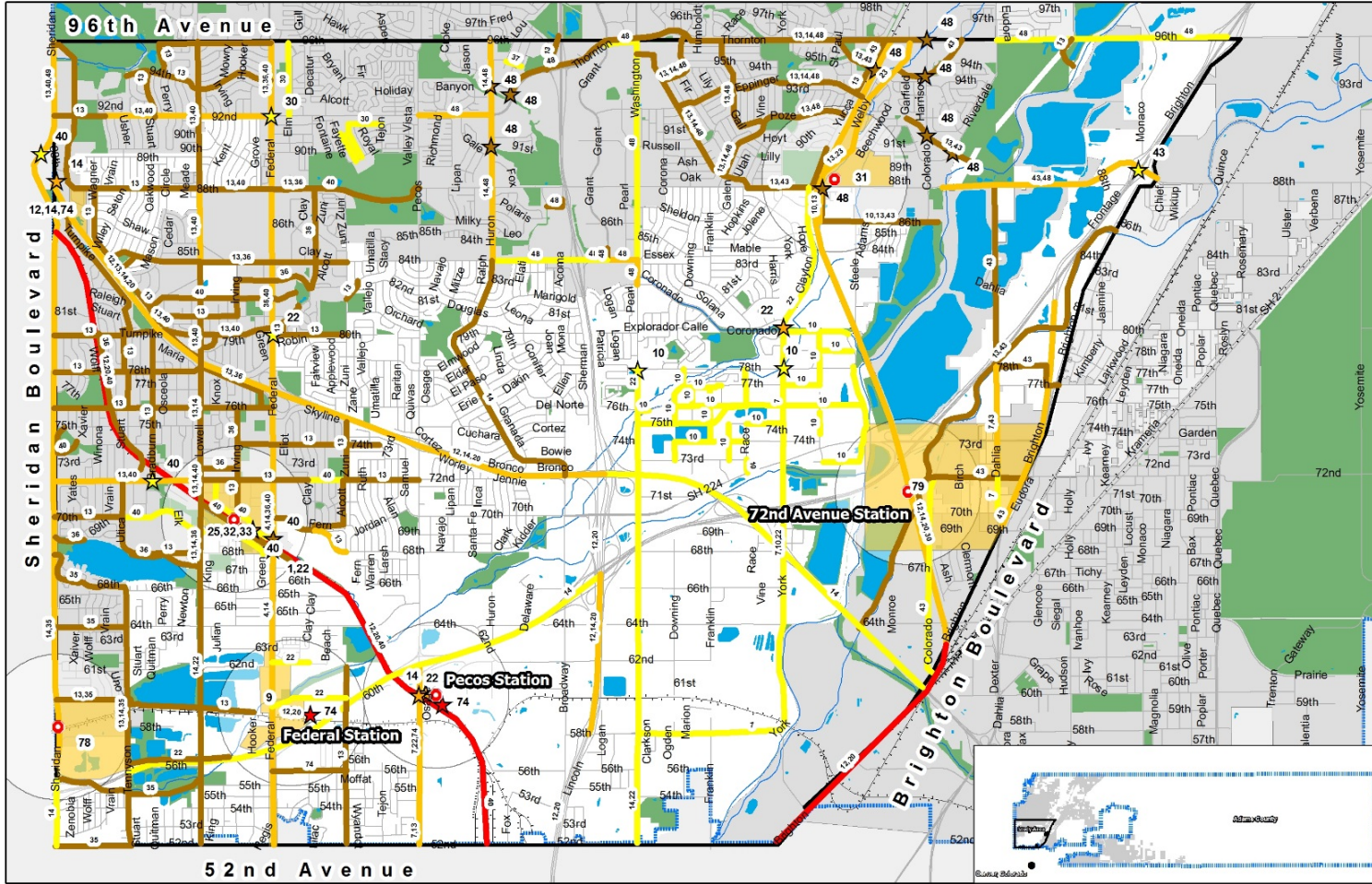
Housing & Neighborhoods



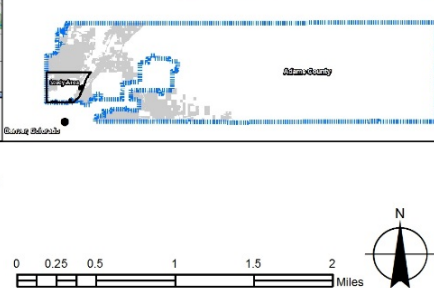
- |                       |                     |             |                  |  |
|-----------------------|---------------------|-------------|------------------|--|
| Adams County Boundary | Future Rail Station | Waterbody   | Parks            | <b>Land Use Recommendations Identified in Previous Plans</b> |
| Study Area Boundary   | County Streets      | County Rail | Half Mile Radius |  |
| Unincorporated Land   | County Rivers       | City Limits | PRE/Site Review  |  |



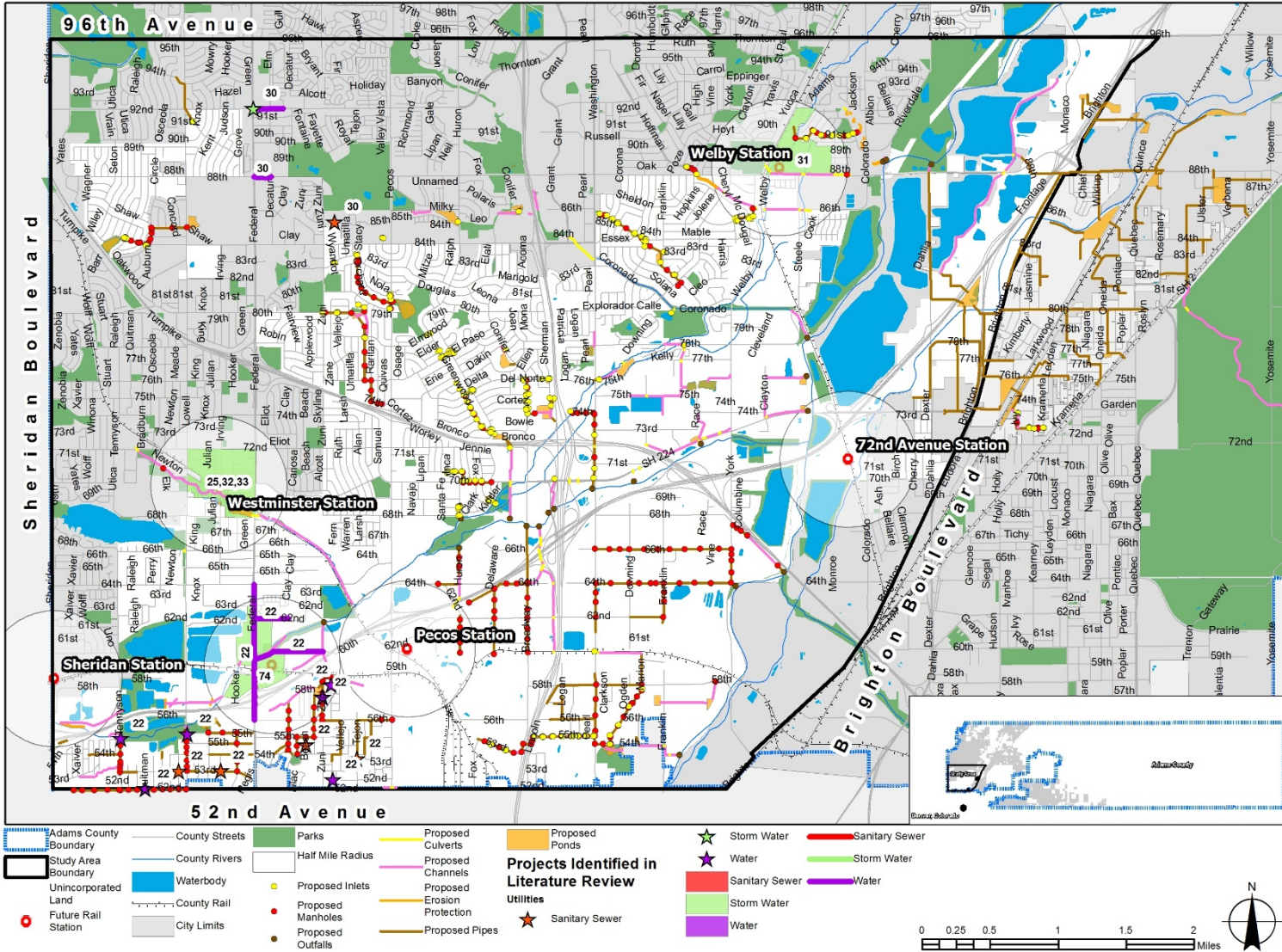
Transportation



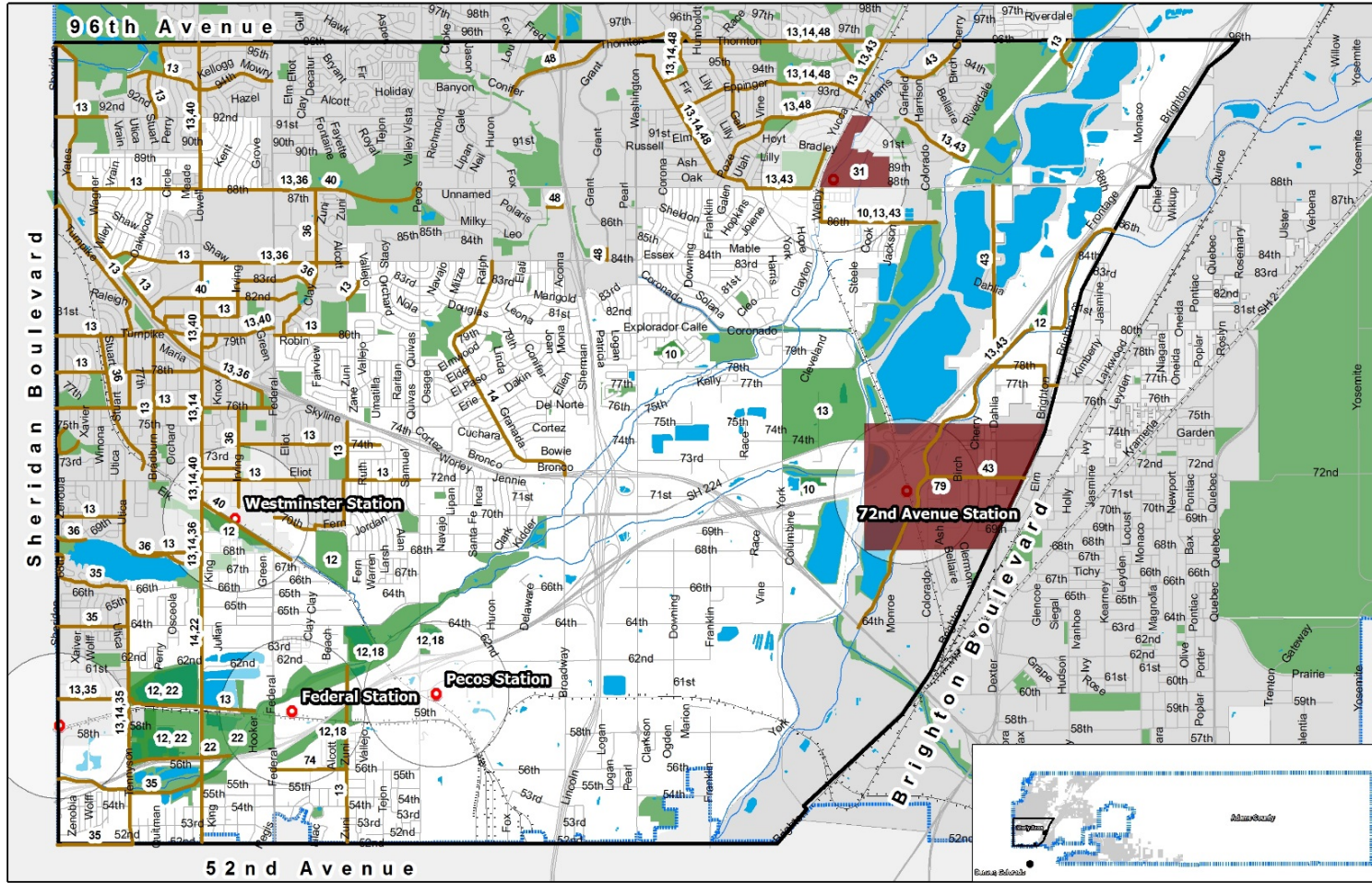
- Adams County Boundary
- County Streets
- County Rail
- Half Mile Radius
- Non-Motorized
- Non-Motorized
- Non-Motorized
- Study Area Boundary
- County Rivers
- City Limits
- Roadway
- Roadway
- Roadway
- Transit
- Transit
- Transit
- Unincorporated Land
- Waterbody
- Parks
- Identified Projects Mode
- Multimodal
- Multimodal
- Multimodal



Drainage & Utilities



Environment, Health, Parks & Trails



- Adams County Boundary
- Study Area Boundary
- Unincorporated Land
- Future Rail Station
- County Streets
- County Rivers
- Waterbody
- Parks
- Parks and Open Space
- Half Mile Radius
- City Limits
- Non-Motorized Transportation Facilities
- Mixed Use with Open Space Element

