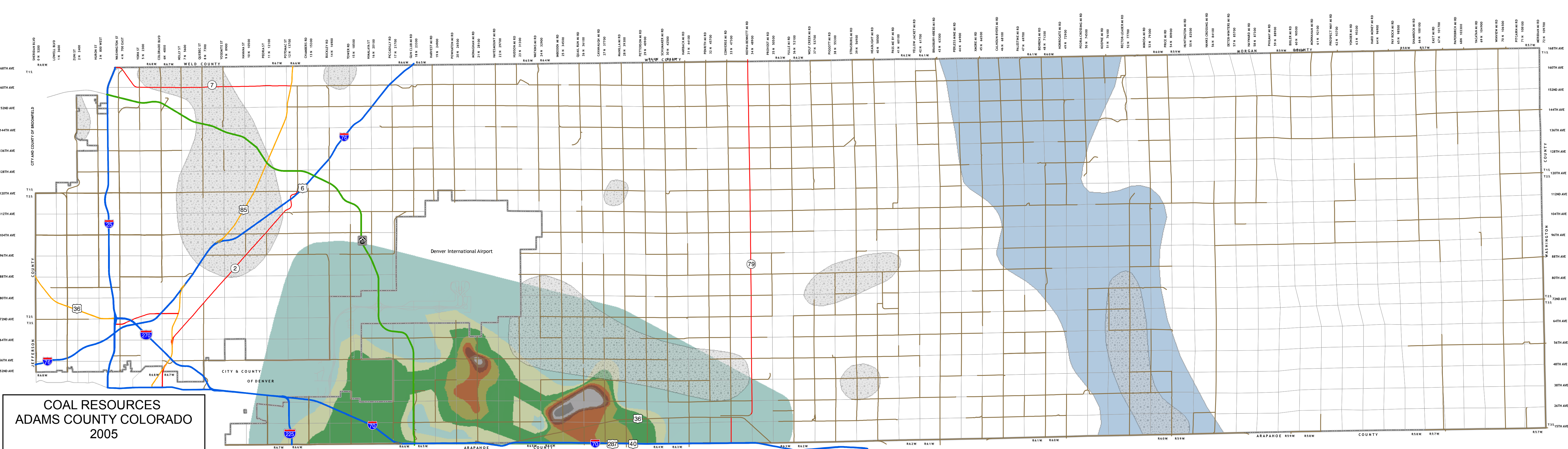


COAL RESOURCES ADAMS COUNTY COLORADO 2005

*All data and information were obtained from the Colorado Geological Survey Open-File Report 01-17 entitled "The Coalbed Methane Potential in the Upper Cretaceous to Early Tertiary Laramie and Denver Formations, Denver Basin, Colorado." Data was collected at a scale of 1:500,000 with the original source dated 1979.

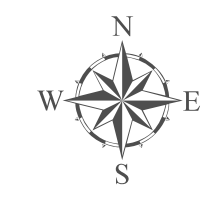
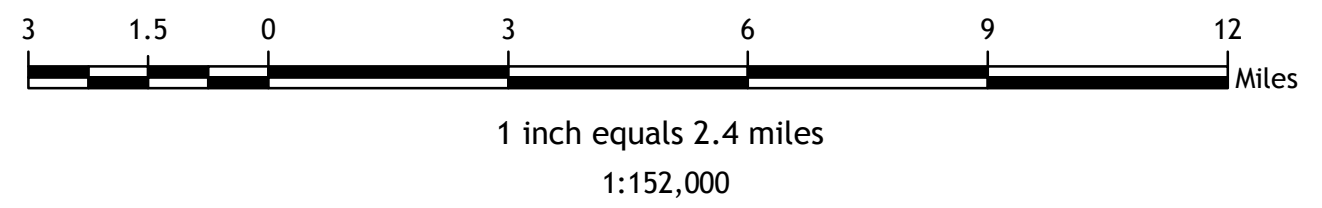


Legend

- Sections
- County Boundary
- Known Areas of Underlain Laramie Coal Beds
- Strippable Laramie FM Coal

- Roads**
- Major
- US Hwy
- Tollway
- State Hwy
- Interstate

- Total Coal Thickness of Denver Formation Elevation (ft.)**
- 17 - 23
- 23 - 29
- 29 - 36
- 36 - 42
- 42 - 48
- 48 - 54
- 54 - 60
- 60 - 66
- 11 - 17



Adams County Department of Planning and Development
Western Service Center
12200 N. Pecos St.
Westminster, CO 80234
303-453-8800

Disclaimer:
Although every reasonable effort has been made to ensure the accuracy of the information provided on this map, Adams County cannot be responsible for consequences resulting from omissions or errors in the information and graphic representations made herein. Users should consult with the Adams County Planning Department to ascertain whether any modifications have been made since the publication of this material.