



# UPDATE ON DRCOG INITIATIVES AND 2040 GROWTH FORECAST

*Presented by:*

**Brad Calvert**

---

December 2, 2016

Adams County Planning Partners  
Conference

December 2, 2016



# DRCOG Overview

- **Quasi-governmental, public agency dedicating to serving local governments**
- **Local officials working together to address the region's challenges**
- **Each community has voice in regional decision-making**
- **Program areas:**
  - **Advocacy**
  - **Aging Services**
  - **Environment**
  - **Regional growth and development**
  - **Shared services**
  - **Transportation and traffic operations**



# DRCOG UPDATE (POTPOURRI)



# Metro Vision: Our Shared Vision

## Metro Vision Plan Shared vision for the future

*“It is the duty of the Regional Planning Commission to make and adopt a regional plan for the physical development of the territory within the boundaries of the region” (CRS 30-28-106)*

20-plus year “vision”  
transportation system

Metro Vision  
Regional Transportation Plan (RTP)

20-plus year affordable  
transportation system

Fiscally Constrained  
RTP

Air Quality  
Conformity

Near-term program  
of funded projects

Transportation Improvement Program  
(TIP)



# Metro Vision Update Milestones

## METROVISION MILESTONES





## Next Steps

- Compile and review all comments received
- Optional meetings with jurisdictions that submitted comments
- Provide comments to Board of Directors – including DRCOG staff feedback
- Potential Board action in January 2017
  - Board Work Session: January 4<sup>th</sup>
  - Board meeting: January 18<sup>th</sup>

**Metro Vision**  
read and comment



SUNDAY	MONDAY	TUESDAY	WEDNESDAY	THURSDAY	FRIDAY	SATURDAY
<b>JANUARY 2017</b>						
1	2	3	4 4th	5	6	7
8	9	10	11	12	13	14
15	16	17	18 18th	19	20	21
22	23	24	25	26	27	28
29	30	31				



## Key Regional Initiatives in 2017

- Transportation Improvement Program (TIP): Focus areas and policy development
  - Call for projects in 2018
- Urban Growth Boundary/Area
  - Development Type classification
  - Allocation request process
  - UGB/A maintenance
- Regional control forecast



## Key Regional Initiatives in 2017

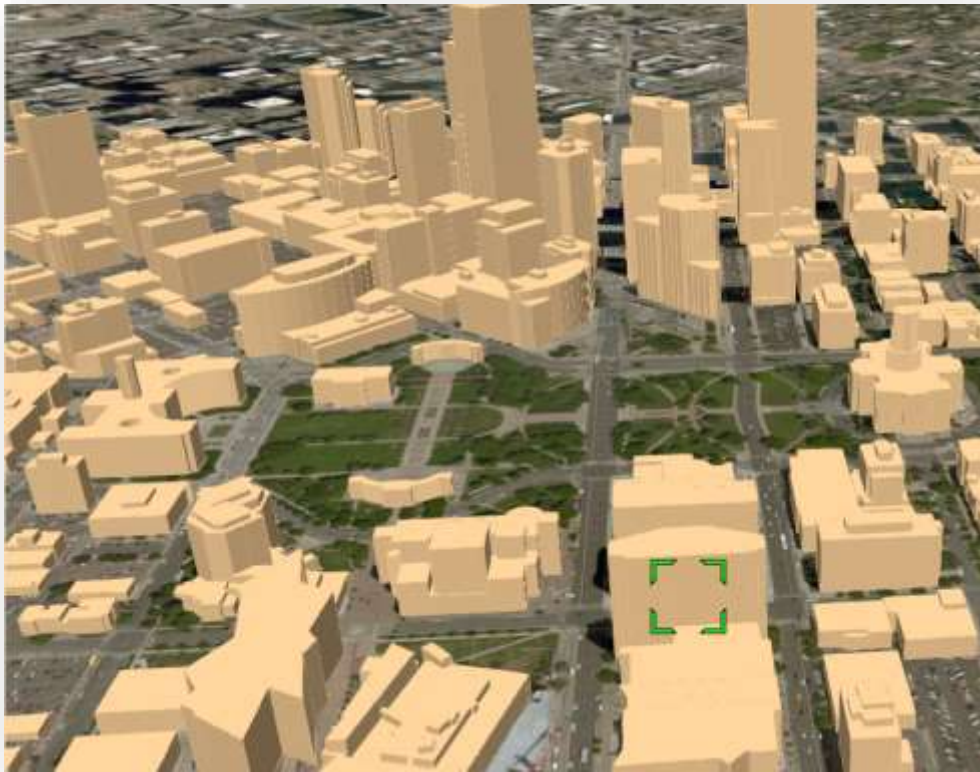
- Metro Vision Idea Exchange(s)
  - **Dec. 13<sup>th</sup>**: *Holding the Line: Preserving Attainable Housing in a Strong Market*
- Regional Active Transportation Plan
- CDOT Multimodal Freight Plan (DRCOG as regional partner)
- Annual GIS data collection
- DRAPP (aerial imagery): delivery of 2016 flights
- Planimetrics 2016: *still opportunity to contribute funding to this project*





# Planimetrics

*Planimetrics: infrastructure features like building roofprints, parking lots, edge of pavement, sidewalks (originally collected in 2014)*



- Pedestrian routing (RTD)
- Fire rescue (South Metro Fire)
- Large scale energy simulation (NREL)
- Impervious surface analysis (Denver Water)
- Asset inventories
- Sidewalk availability and quality studies
- 3D building models



## Key Regional Initiatives in 2017

- **Transit Station Survey Report** (aka Who is TOD?)
  - Resident, business and employee reports
  - Additional data analysis
- **Boomer Bond – DOLA support for small communities**
- **Building capacity for small area scenario analysis**
  - Orientation and demo webcast – **Dec. 5<sup>th</sup> at 1 p.m.**



## Key Regional Initiatives in 2017 (Funding)

- Urban Center / Station Area Master Planning Funds (FY18-19)
  - Original studies and next steps (likely)
- Regional Travel Demand Management Pool (FY18-19)
  - Past projects: bike shelters at transit, bike libraries, real-time signage, transit fare subsidies, marketing and outreach programs
- Regional Transportation Operations (RTO) Improvement Program



## Contact Information

Brad Calvert

[bcalvert@drcog.org](mailto:bcalvert@drcog.org)

303.480.6839



# Adams County Growth and Land Use

*Presented by:*

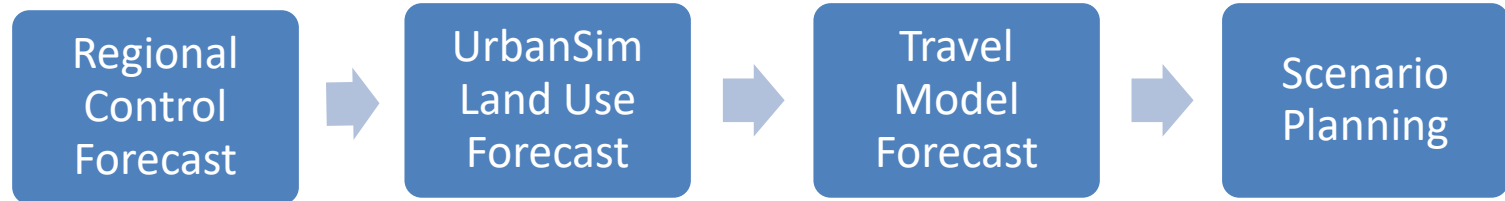
**Daniel Jerrett  
Xavier Gitiaux**

---

December 2nd, 2016



# DRCOG Modeling Process





# The Region is Growing...

- Population

- 2015: 3.2 Million

- 2040: 4.3 Million

- ~ 40%



- Employment

- 2015: 1.7 Million

- 2040: 2.4 Million

- ~ 41%





## And So Is Adams County...

- Population

- 2015: 491K

- 2040: 744K

- ~ 51%



- Employment

- 2015: 200K

- 2040: 337K

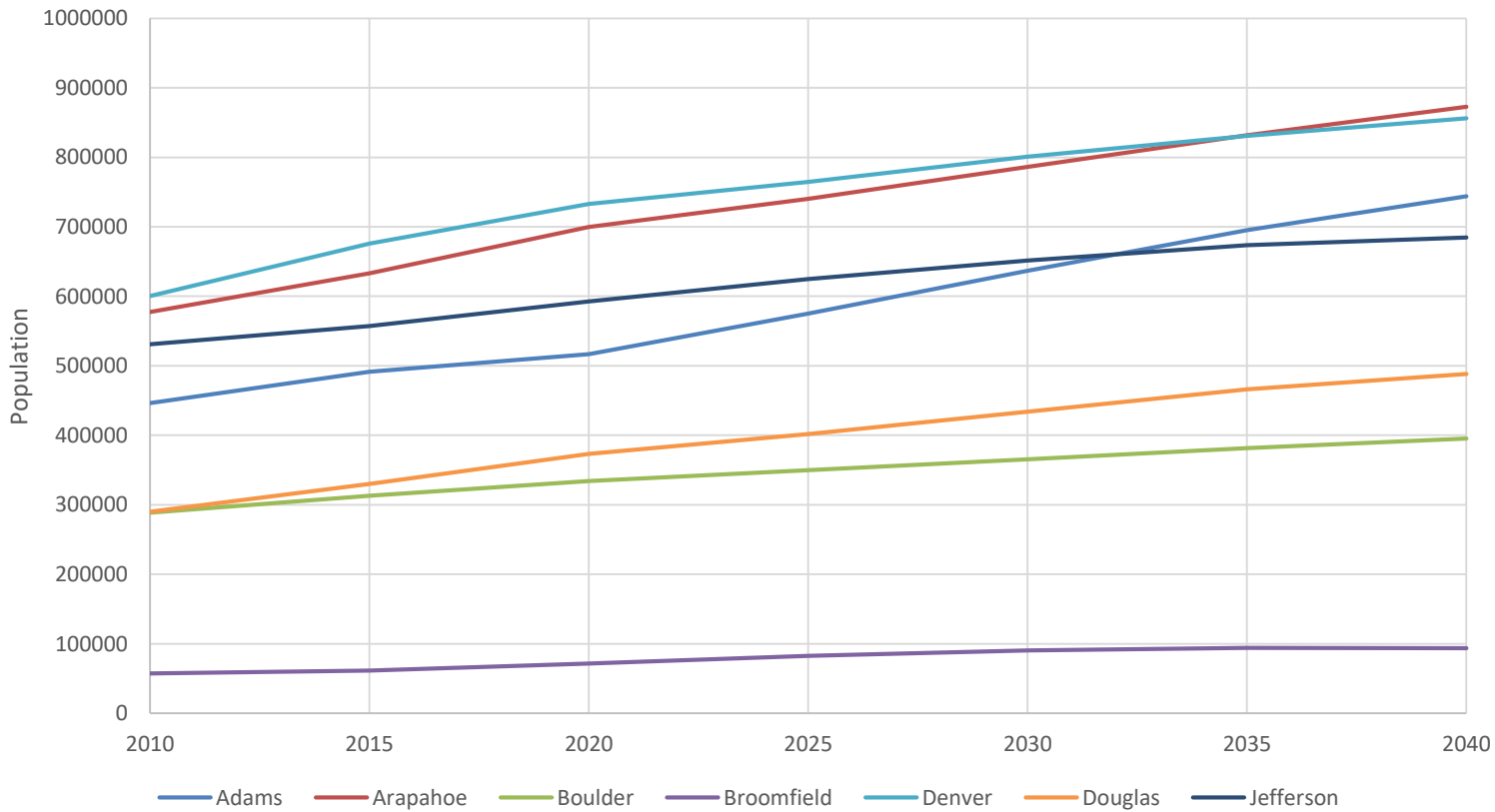
- ~ 67%





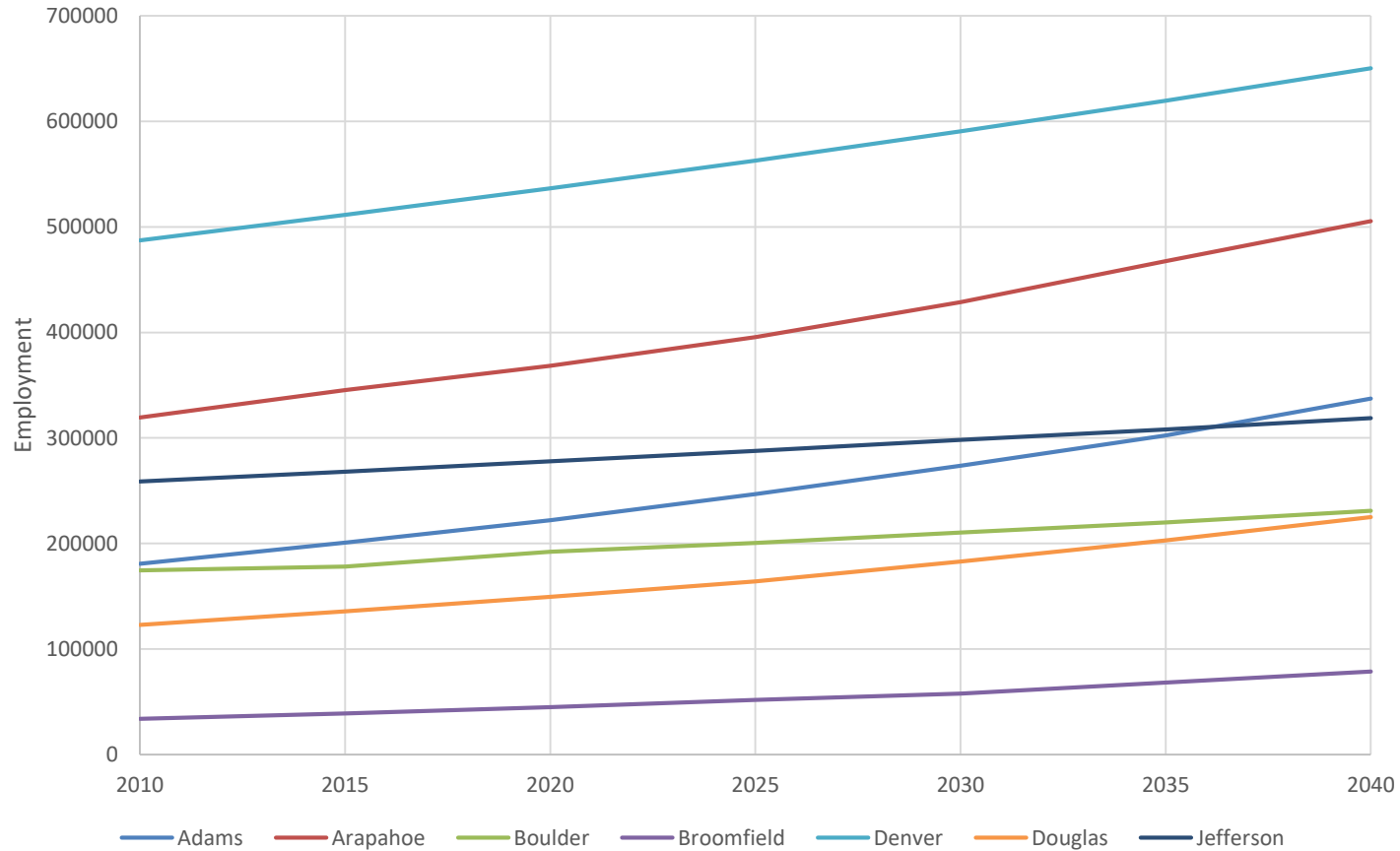


# Population Growth



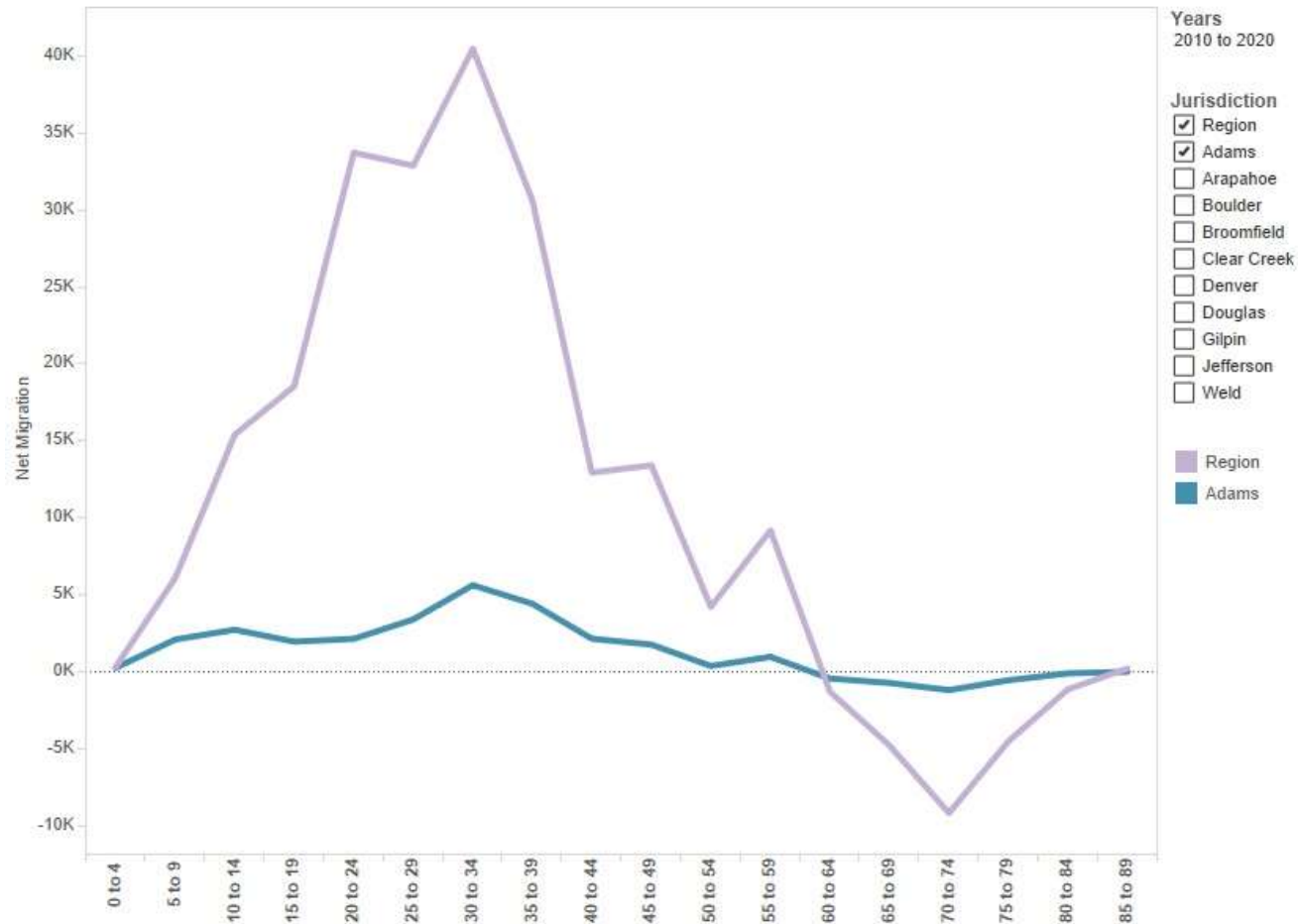


# Employment Growth





# Who's Moving to Adams County?

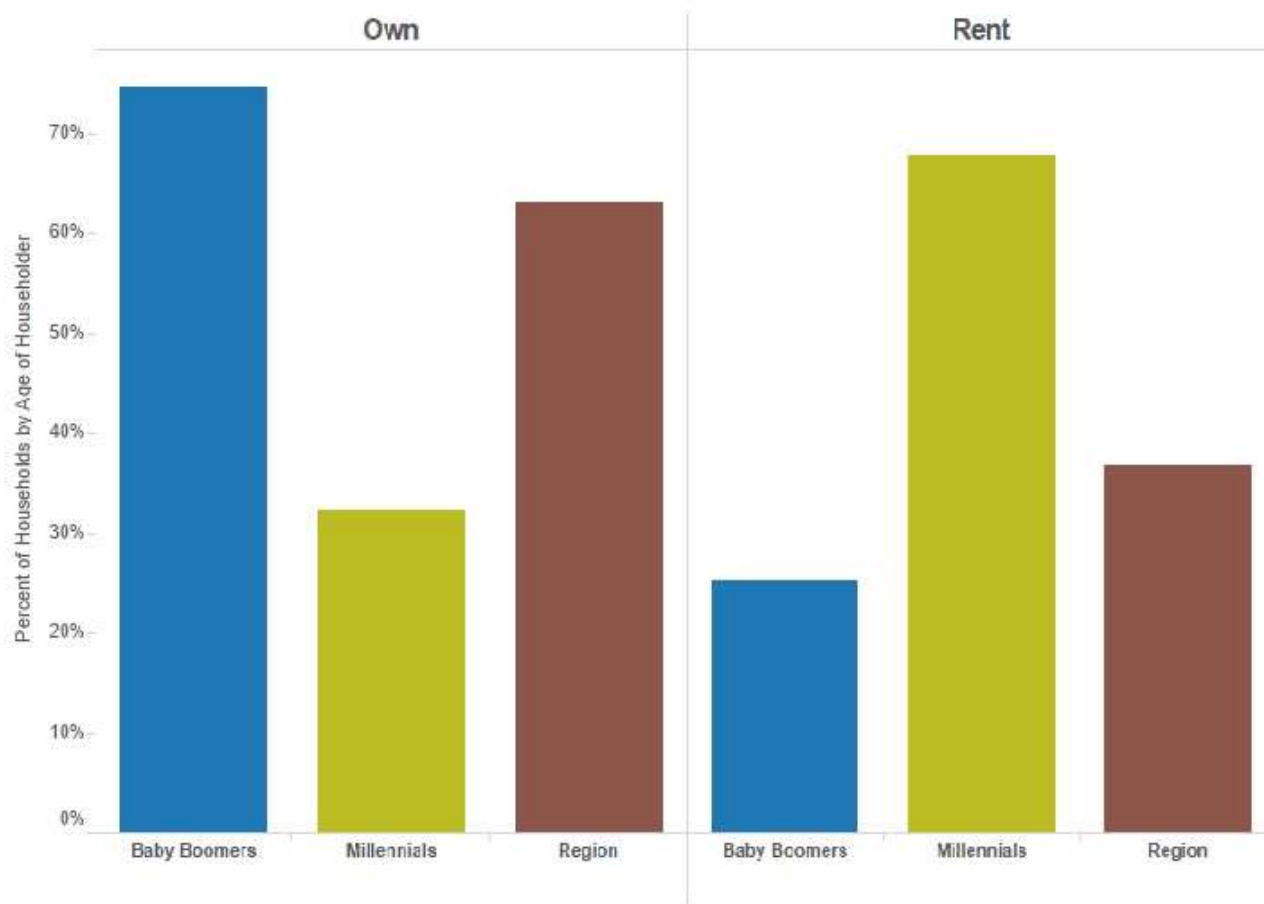


"Demography Dashboard" Colorado Department of Local Affairs. 2015. [https://dola.colorado.gov/demog\\_webapps/dashboard.jsf](https://dola.colorado.gov/demog_webapps/dashboard.jsf)





# Housing mix is changing



"American Communities Survey 5-Year 2014." US Census Bureau. 2015. <http://factfinder.census.gov>.



# DRCOG UrbanSim Land Use Model

- UrbanSim allocates the regional control forecast down to 2,900 traffic analysis zones (TAZ).
- Combines residential and business choice models with a pro-forma real estate development model.
- Includes constraints such as open space and current zoning.
- Current comp plans/zoning codes
- Future scheduled development

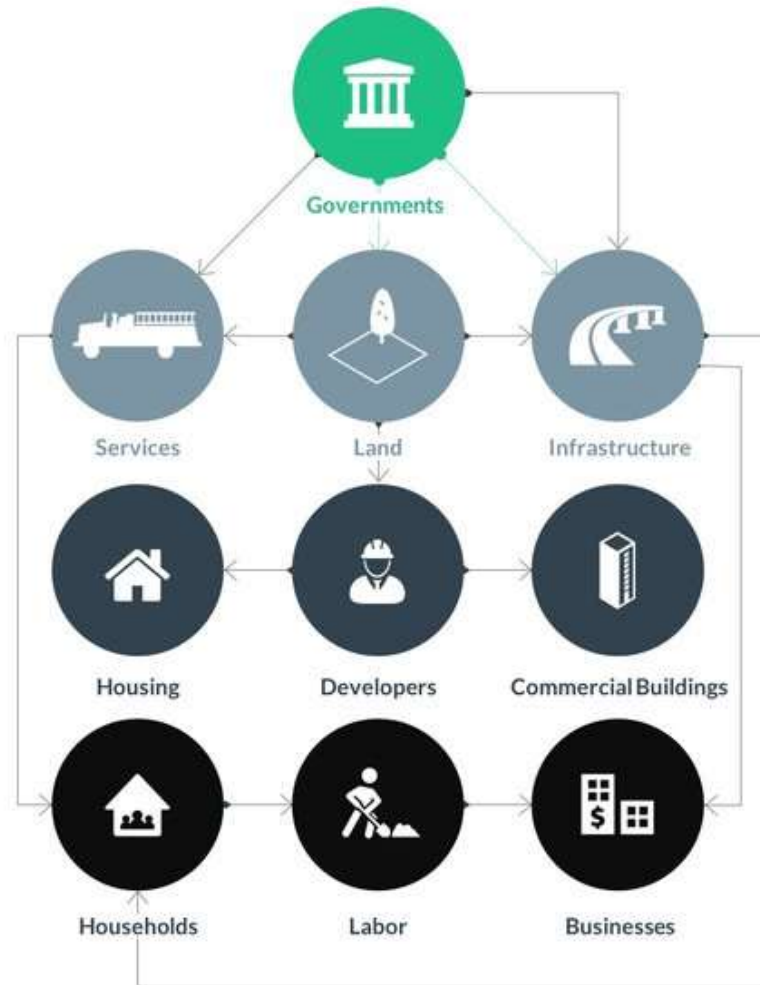


# UrbanSim

- UrbanSim is a simulation system for supporting planning and analysis of urban development, incorporating the interactions between land use, transportation, the economy, and the environment.
- UrbanSim is essentially a computational representation of metropolitan real estate markets interacting with transport markets, modeling the choices made by households, businesses, and real estate developers, and how these are influenced by governmental policies and investments.



# UrbanSim Interaction

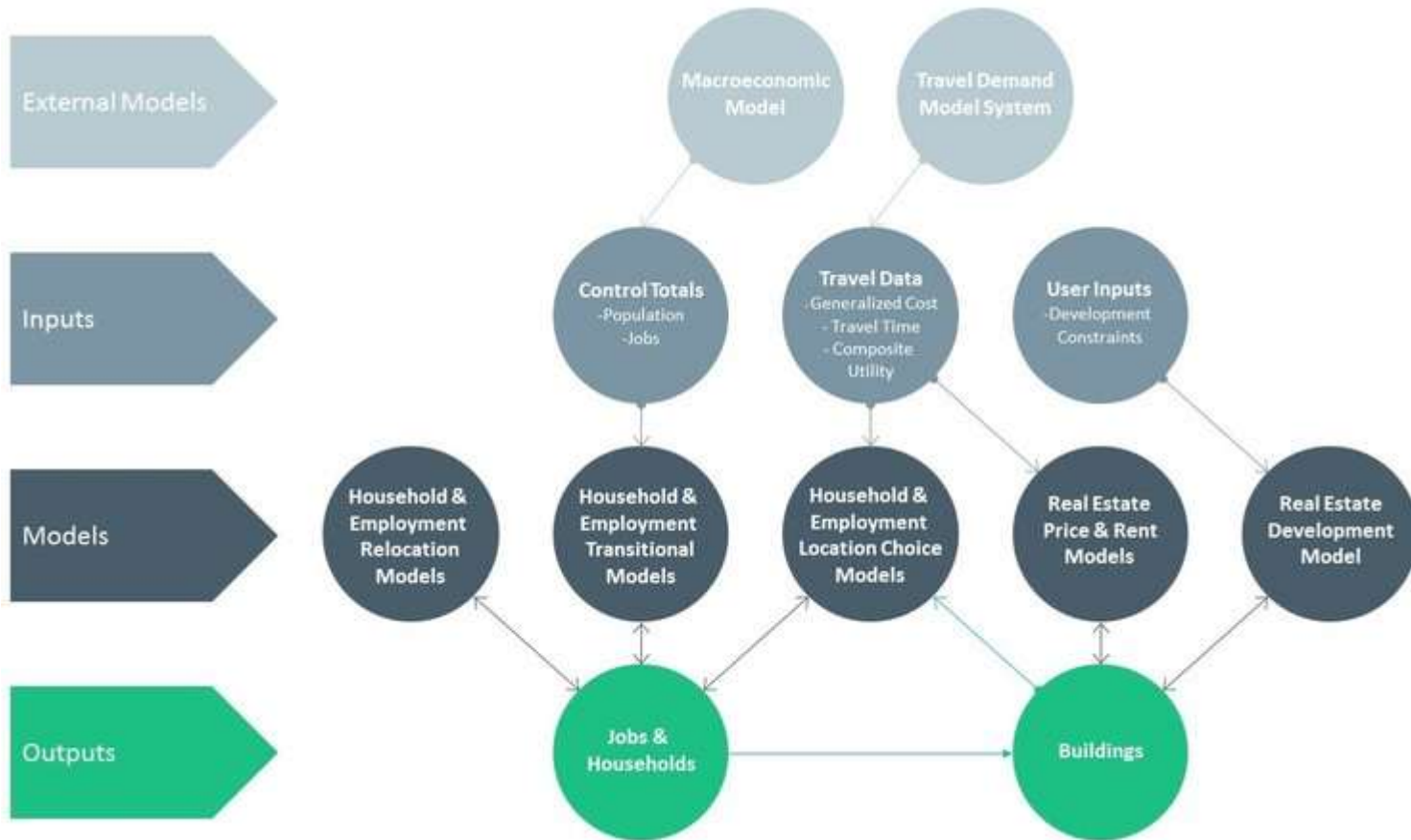


←→  
Flow of consumption from supplier to consumer

→  
Regulation or Pricing



# UrbanSim Model Components







# Increased Accessibility to Transit

*Population/Employment within 1 mile of a station*

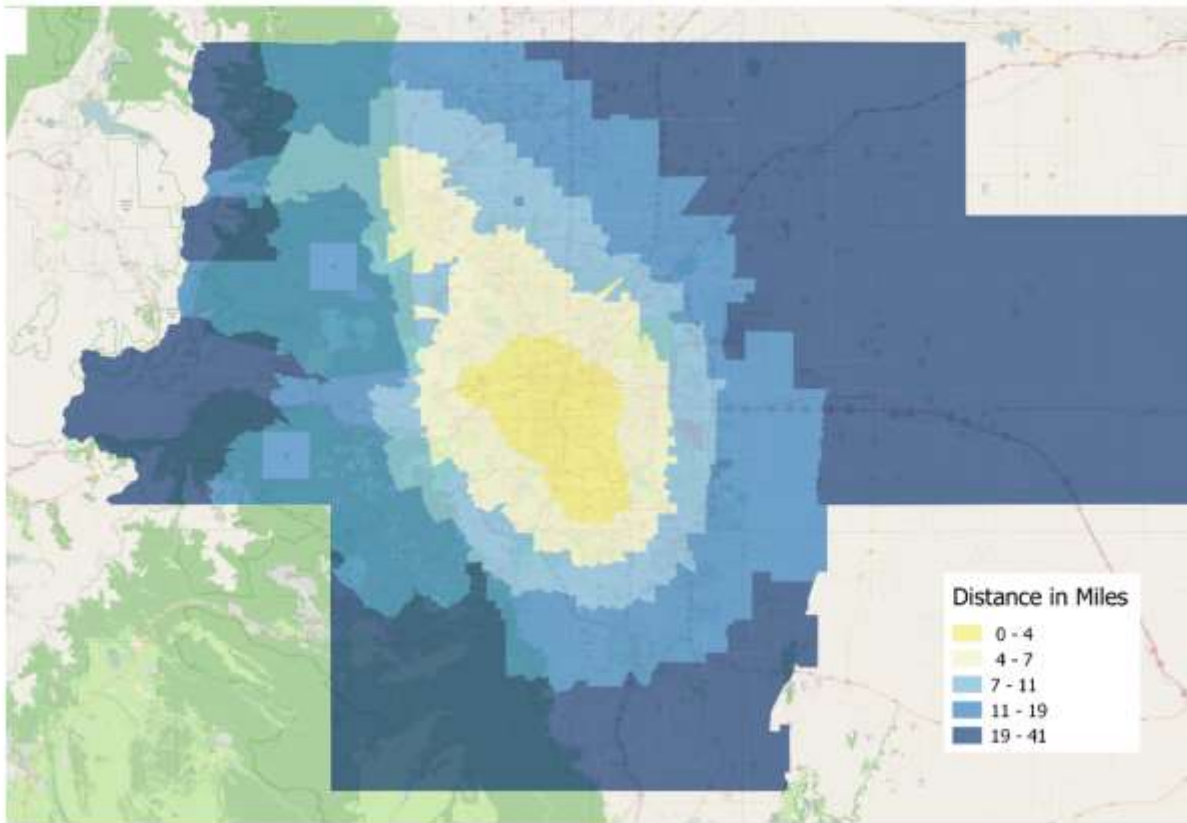
<b>Population</b>	<b>2010</b>	<b>2040</b>
<b>1 Mile of Station (DRCOG)</b>	8%	20.3%
<b>1 Mile of Station (Adams)</b>	0%	21.2%

<b>Employment</b>	<b>2010</b>	<b>2040</b>
<b>1 Mile of Station (DRCOG)</b>	26.3%	39.8%
<b>1 Mile of Station (Adams)</b>	0%	24.0%



# Increased Access to Jobs

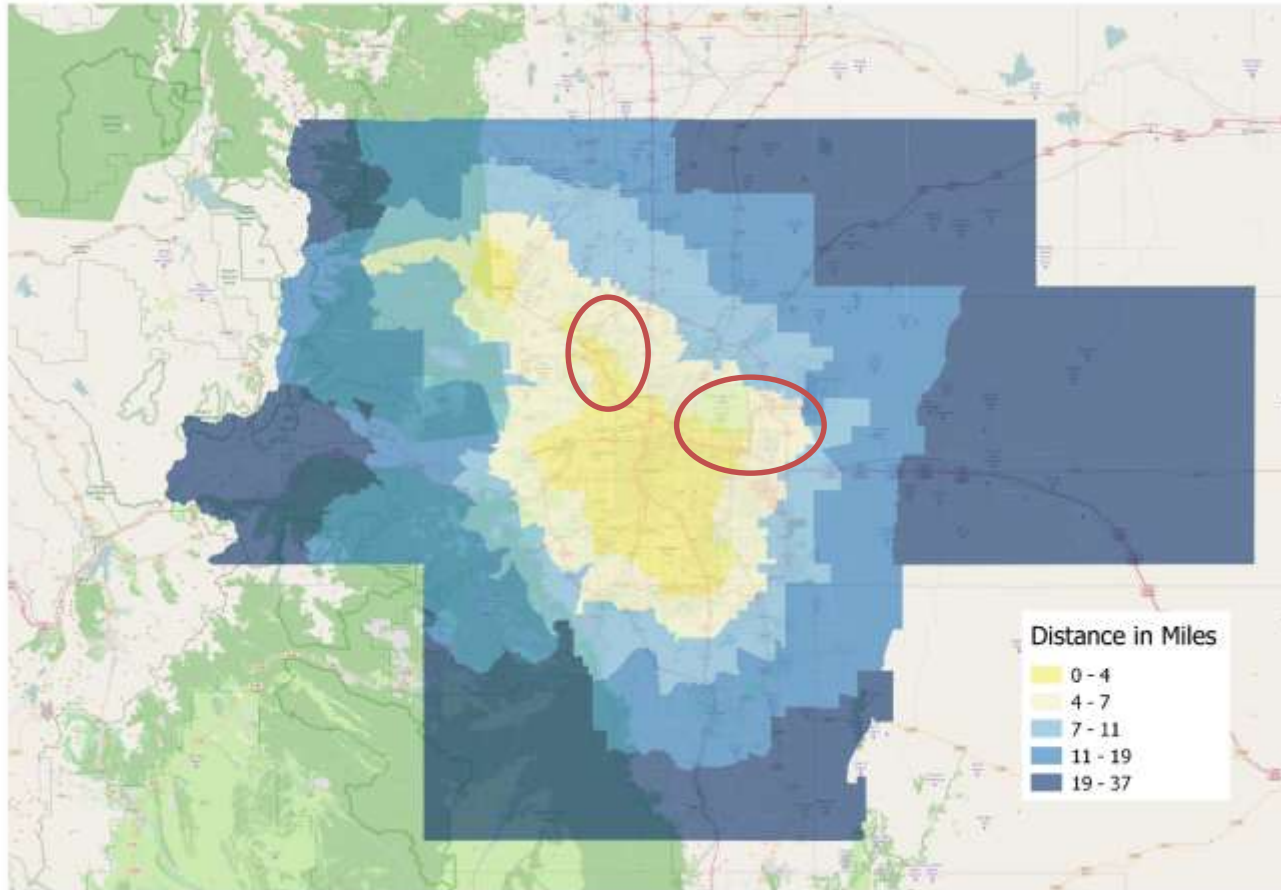
*Distance to 100,000 jobs (2010)*





# Increased Access to Jobs

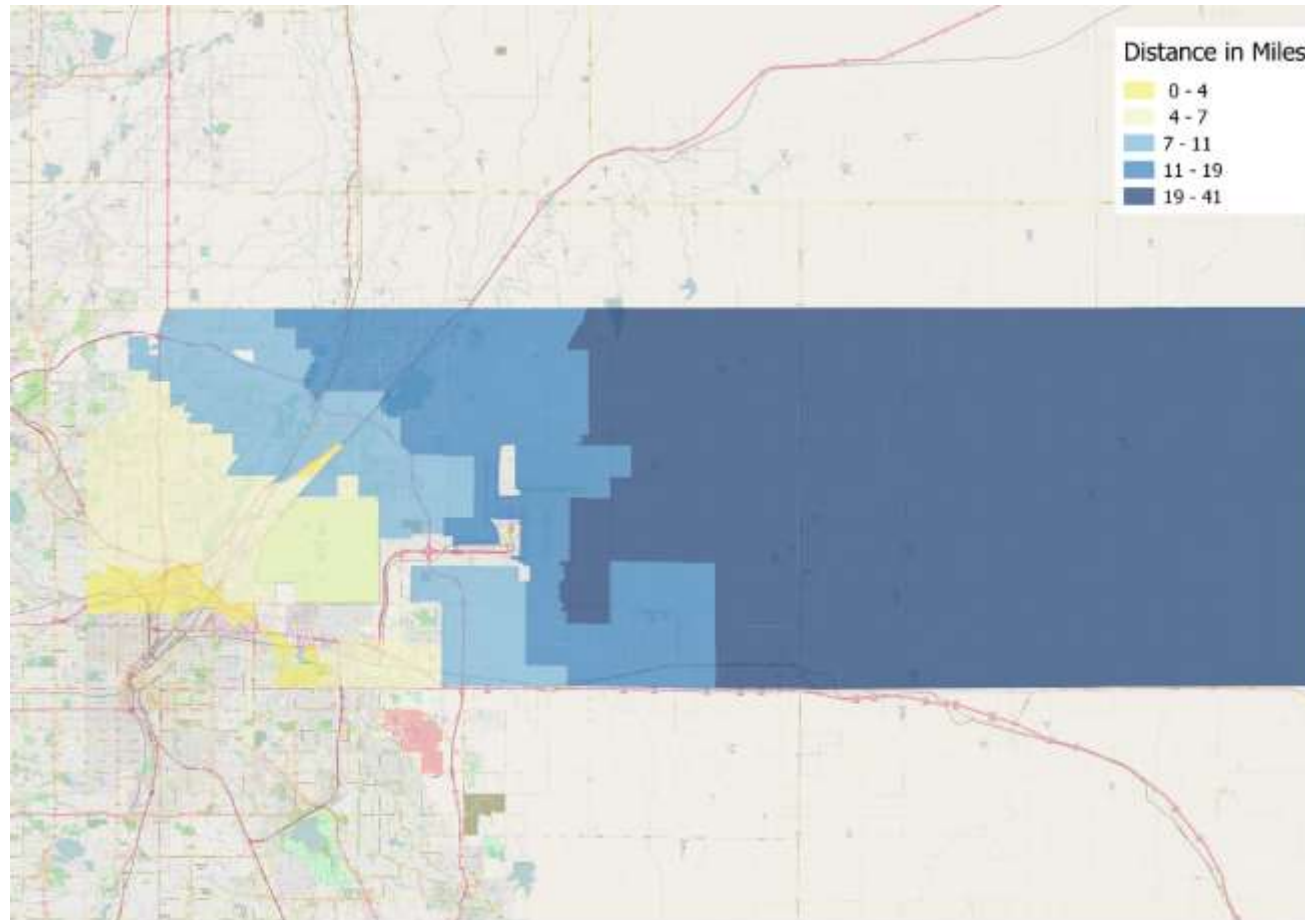
*Distance to 100,000 jobs (2040)*





# Increased Access to Jobs

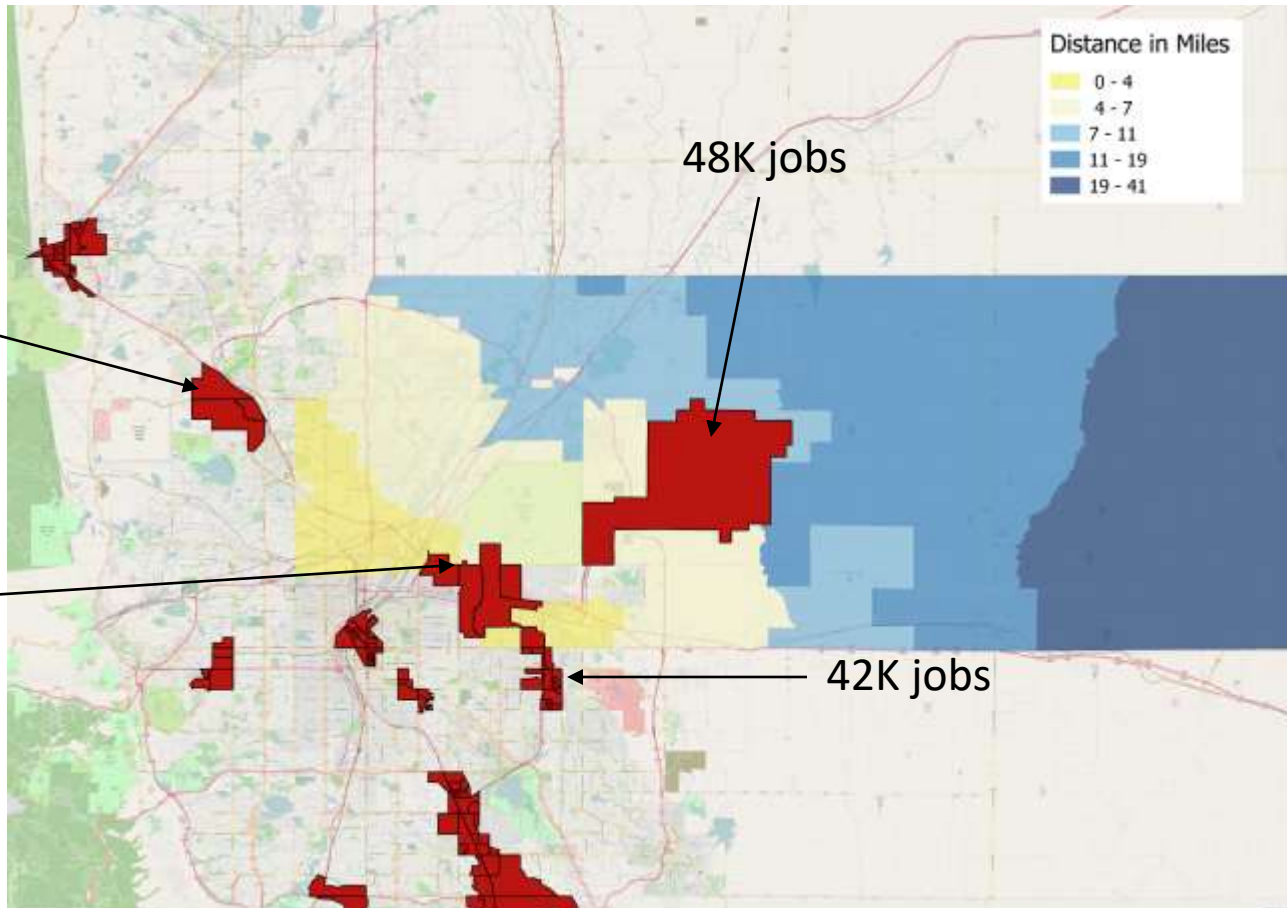
*Distance to 100,000 jobs (2010) – Adams County*





# Increased Access to Jobs

*Distance to 100,000 jobs (2040) – Adams County*





# Densification versus Expansion

Population (1000)	2010	2040	Annual Growth (%)
Adams County	491	744	1.4
Aurora	327	546	1.7
Brighton	33	67	2.4
Commerce City	45	86	2.2
Thornton	120	167	1.1
Westminster	108	152	1.1



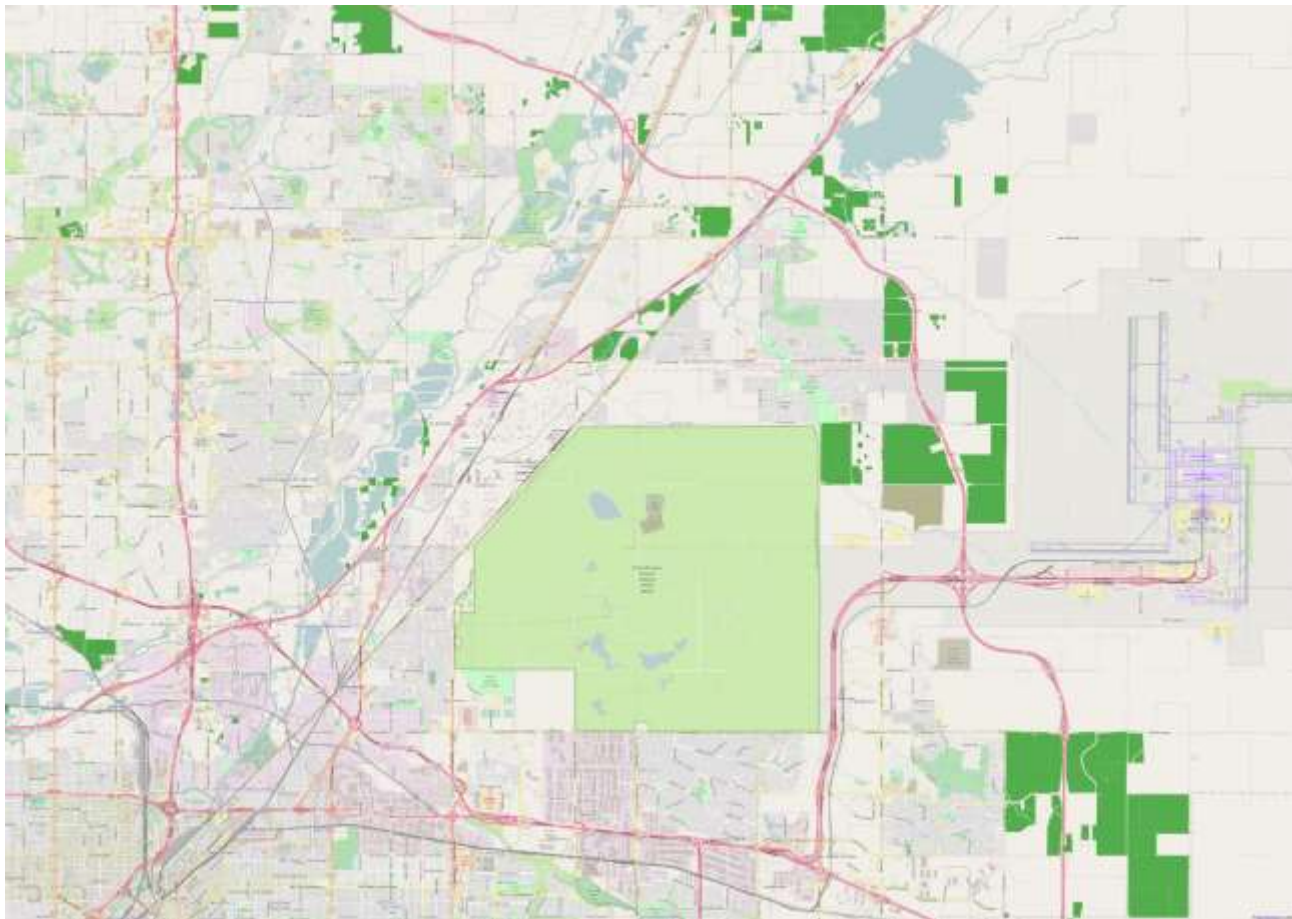
# Densification in Adams County Cities

Employment (1000)	2010	2040	Annual Growth (%)
Adams County	180	337	2.1
Aurora	125	272	2.6
Brighton	13	20	1.4
Commerce City	28	41	1.3
Thornton	27	36	1.0
Westminster	47	62	0.9



# Densification versus Expansion

*By 2040, in Adams County, 13.5% of households will live in current greenfields*







# Pathways to Aerotropolis

*What will it take for the forecasts to include Aerotropolis?*

- Zoning regulations near DIA
- How will Aerotropolis affect the long run growth in employment and population in Adams County and in the region?



## Contact Information

Daniel Jerrett

[djerrett@drcog.org](mailto:djerrett@drcog.org)

303.480.5644

Xavier Gitiaux

[xgitiaux@drcog.org](mailto:xgitiaux@drcog.org)

303.480.5642