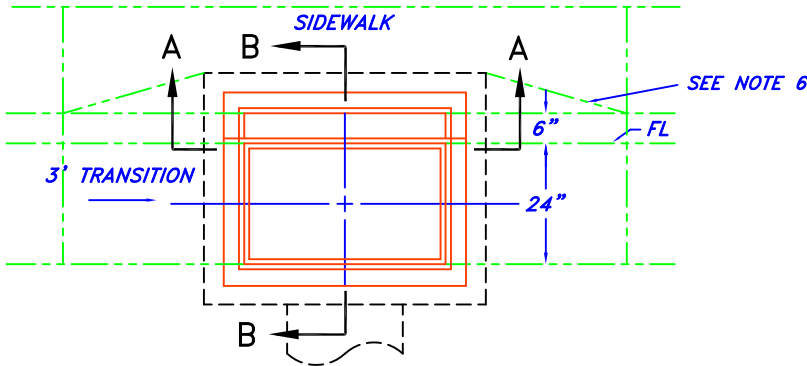
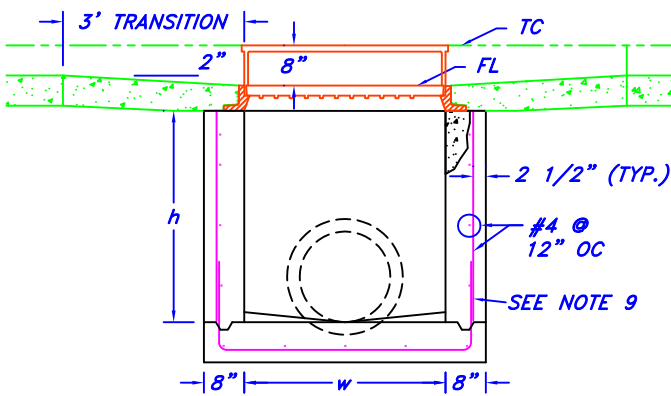


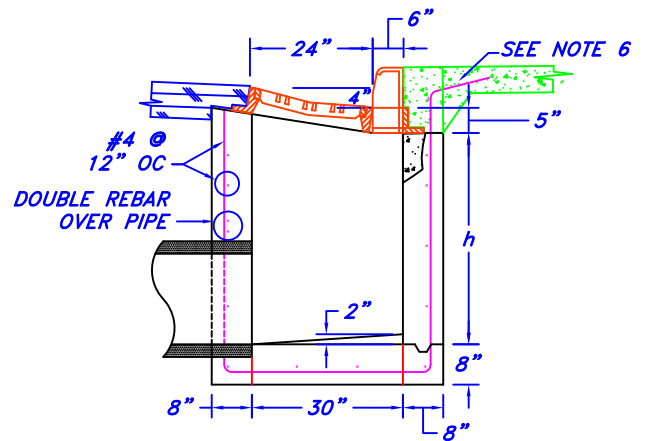
CENTER SECTION MULTIPLE INLETS



# OF INLETS	STD. DEPTH (h)	STD. WIDTH (w)
SINGLE	42"	40"
DOUBLE	48"	84"
TRIPLE	52"	128"



SECTION A-A



SECTION B-B

NO SCALE

NOTES:

- FOR PAYMENT PURPOSES, INLET STRUCTURES SHALL INCLUDE 3'-0" CURB & GUTTER TRANSITION SECTION AT EACH END OF INLET PLUS SIDEWALK SECTIONS WHERE REQUIRED BEHIND INLET STRUCTURE AND TRANSITION SECTIONS.
- FLOOR SLOPE MAY BE POURED MONOLITHICALLY WITH BASE.
- OUTLET PIPES TO BE SET FLUSH WITH INSIDE FACE OF INLET WALL. BELL END TO BE PLACED ON UPSTREAM SIDE.
- UNLESS OTHERWISE SPECIFIED ON THE DRAWINGS OR AS DIRECTED BY THE ENGINEER, ALL TYPE 16 INLETS SHALL BE CONSTRUCTED WITH AN ADJUSTABLE CURB BOX.
- REQUIRED FRAME IS NEENAH R-3362-1 (SINGLE) OR R-3363-1 (DOUBLE). SIMILAR FRAMES BY OTHER MANUFACTURERS MUST BE APPROVED BY THE COUNTY PRIOR TO USE.
- EXTEND REINFORCING INTO SIDEWALK SECTION A MINIMUM OF 12". WHERE NO SIDEWALK IS TO BE PLACED, EXTEND REINFORCING INTO BACK WALL OF INLET BEHIND CURB FRAME.
- WHERE INVERT ELEVATION IS GIVEN, IT SHALL BE CONSIDERED TO BE LOCATED AT THE FLOW LINE OF THE PIPE (OUT). BOX DIMENSIONS TO BE ADJUSTED ACCORDINGLY.
- ALL INLET BOXES SHALL BE CAST IN PLACE CONCRETE UNLESS OTHERWISE AUTHORIZED BY THE COUNTY.
- WHERE VERTICAL BARS ARE TO BE SPLICED, MINIMUM SPLICE LENGTH = 12" OR 25d.

ADAMS COUNTY
TRANSPORTATION DEPARTMENT
/ENGINEERING

4430 S. ADAMS COUNTY PKWY.
BRIGHTON, CO 80601

**INLET BOX
TYPES 13 & 16**

REVISION DATE:
06/02/14

FILE NAME:
INLET_BOX.DWG

ADAMS COUNTY
TRANSPORTATION DEPARTMENT
/CONSTRUCTION INSPECTION

4430 S. ADAMS COUNTY PKWY.
BRIGHTON, CO 80601