

# MAKING CONNECTIONS/ SW ADAMS COUNTY

Planning and Implementation Plan

ADAMS COUNTY



**WILSON**  
& COMPANY

# Public Meeting Agenda

- *Introductions and Project Status Update*
- *Methodology and Results*
  - Target Areas
  - Top 40 List
- *Open House Boards with Dot Polling*
- *Electronic Polling*
- *Next Steps*

Don't forget to sign in!

## Open House Boards

- Welcome Board
- Process/Methodology Boards (3)
- Completed Projects Board
- "Top 40" Projects Boards (7)

# Adams County Staff

## Contact Information – English

**Abel Montoya or Rachel Bacon, County Project Managers**

Office of Long Range Strategic Planning

Tel. (720) 523-6863

AMontoya@adcogov.org

Rbacon@adcogov.org

## Información de contacto - Español

**Victoria Mendoza, Asesora**

Tel. (303) 239-5325

informacion@heinrich.com

## Technical Advisory Committee

- **Adams County Departments**
  - Long Range Strategic Planning
  - Parks & Open Space
  - Emergency Management
  - Transportation Administration
  - Transportation Engineering
  - Finance
  - Budget
  - Community & Economic Dev.
  - Economic Development
  - Business Solutions Group (GIS)
  - Public Involvement Office
  - County Managers Office
- **Tri-County Health Department**
- **Adams County Housing Authority**

# Consultant Team



*Jim Godwin*

Wilson & Company

- Drainage & Utilities
- Infrastructure



*Vanessa Spartan, AICP*

Wilson & Company

- Planning
- Public Involvement



*Daniel Haggerty*

Wilson & Company

- Drainage & Utilities
- Infrastructure



*Deana Swetlik, AICP*

Entelechy

- Land Use
- Economic Development
- Neighborhoods/Housing



*Victoria Mendoza, ATA*

Hispanidad

- Public Involvement
- Spanish Translations

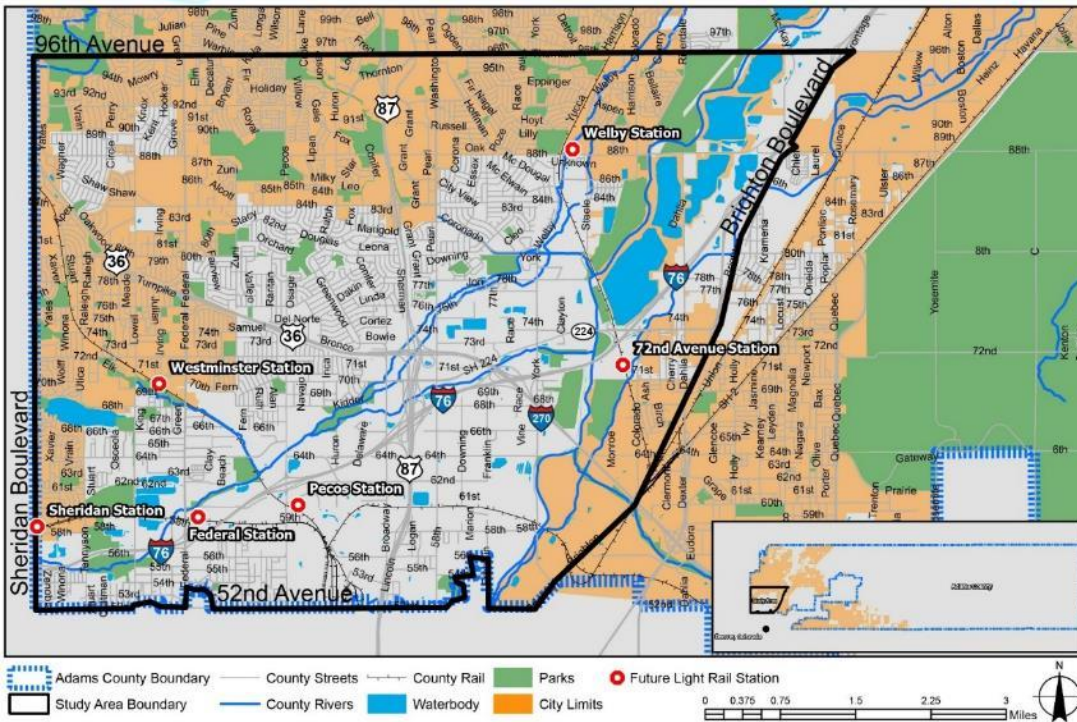


*Daniel Trujillo, PE*

Wilson & Company

- Infrastructure
- Transportation

# Project Goals



- Focus on unincorporated Adams County within the Planning Area of 52<sup>nd</sup>, 96<sup>th</sup>, Sheridan, and Brighton.
- Utilize information and ideas from previous plans.
- Identify and prioritize strategic and equitable investments that focus on economic return.
- **Identify Top 40 Priority Projects and Top 10 Priority Projects**
- Identify Implementation Strategies

# Why is this plan and this meeting important?

- *Population is expected to double in study area.*
- *Great needs yet limited financial resources.*
- *Public input used in determining strategic priorities.*
- *Today you will **give input** on what you believe should be investment priorities for the community.*

# Work Plan & Schedule

## Tasks/Phases



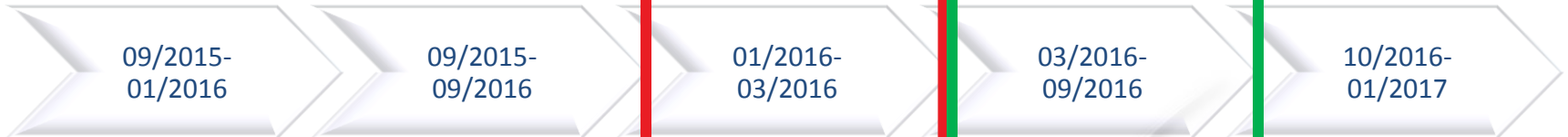
## Public Involvement



## Deliverables

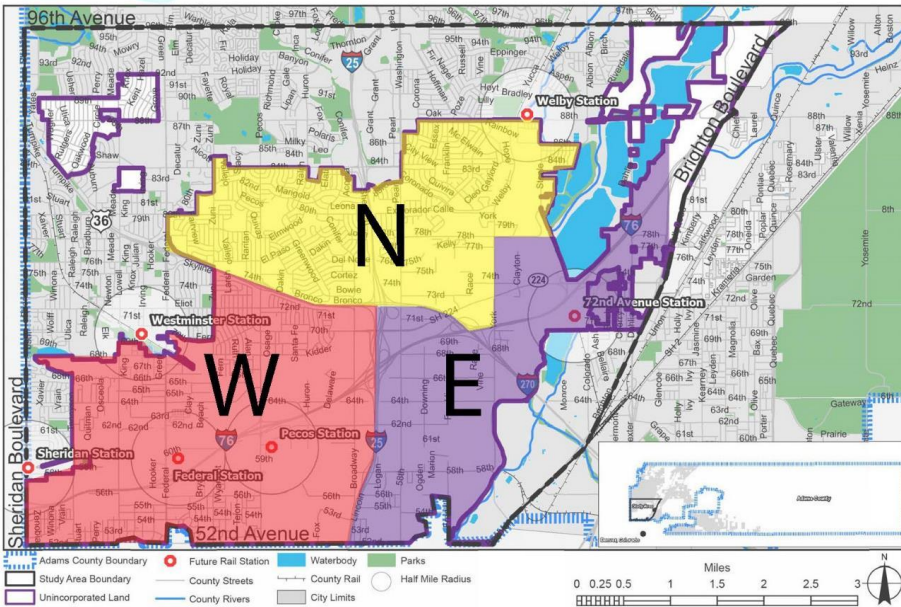


## Schedule Range



# Task 2: Some of what we heard...

- Areas of Concentration
  - Dot Polling Exercise
- Polling Questions and Results
  - Electronic Polling Questions

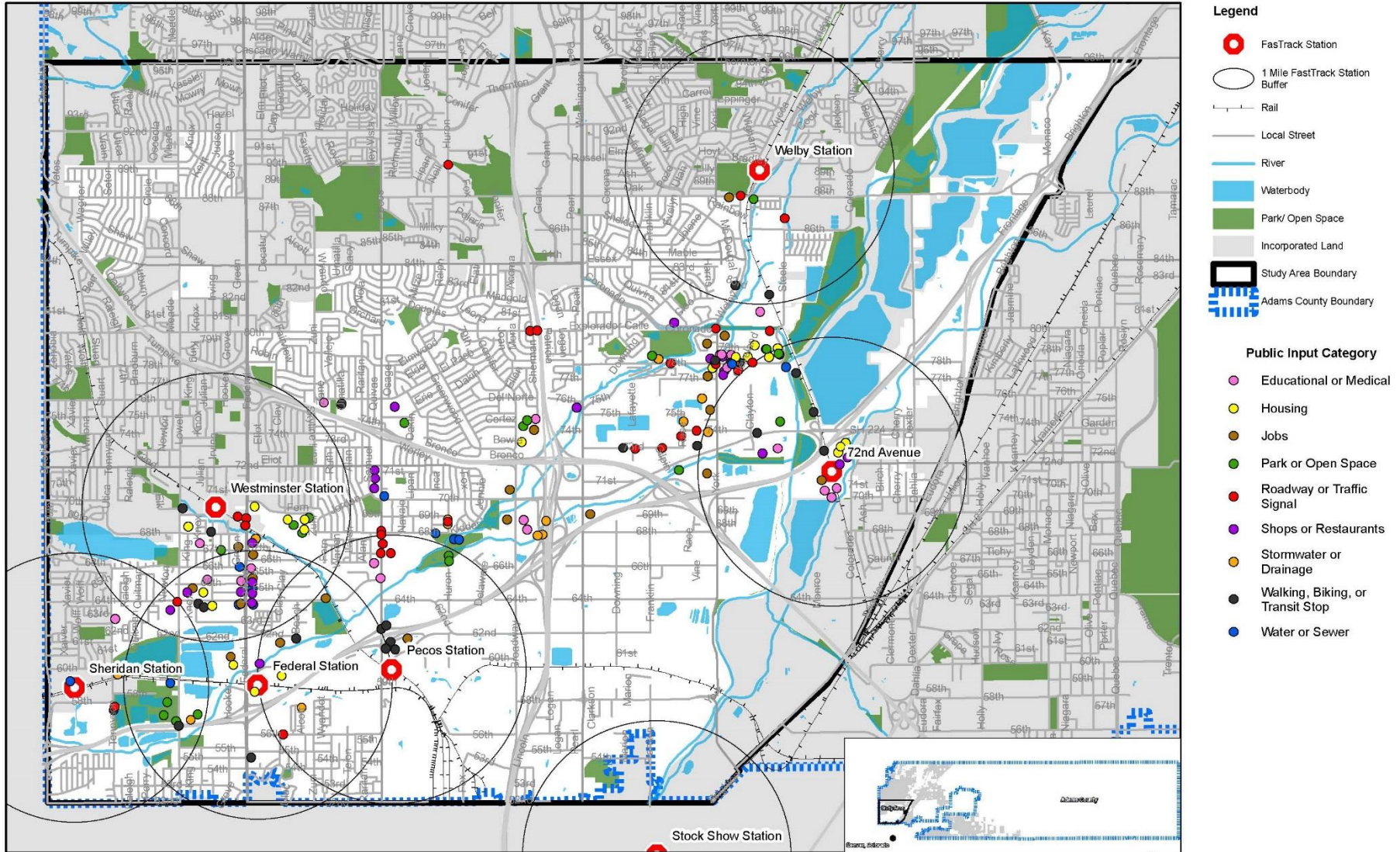


MAKING CONNECTIONS/SW ADAMS COUNTY  
PLANNING AND IMPLEMENTATION PLAN





# Dot Polling Exercise - Areas of Concentration



MAKING CONNECTIONS/SW ADAMS COUNTY  
PLANNING AND IMPLEMENTATION PLAN



# Electronic Polling Results

- **33 % - from outside project area**
- **56% - from unincorporated areas**
- **41% - 21 to 40 Years Old**
- **Nearly Equal Results - “Type” of Programs**
- **59% - Prioritize walking, biking and access to transit**
- **55% - Prioritize Existing Developments and Neighborhoods**
- **55% - Focus on One Area at a Time**
- **63% - Focus on Redevelopment and Revitalization**
- **30% - Pay for with Grants**
- **28% - Pay for with Special Use Taxes**

# Top 40 Projects

Methodology and Results



MAKING CONNECTIONS/SW ADAMS COUNTY  
PLANNING AND IMPLEMENTATION PLAN



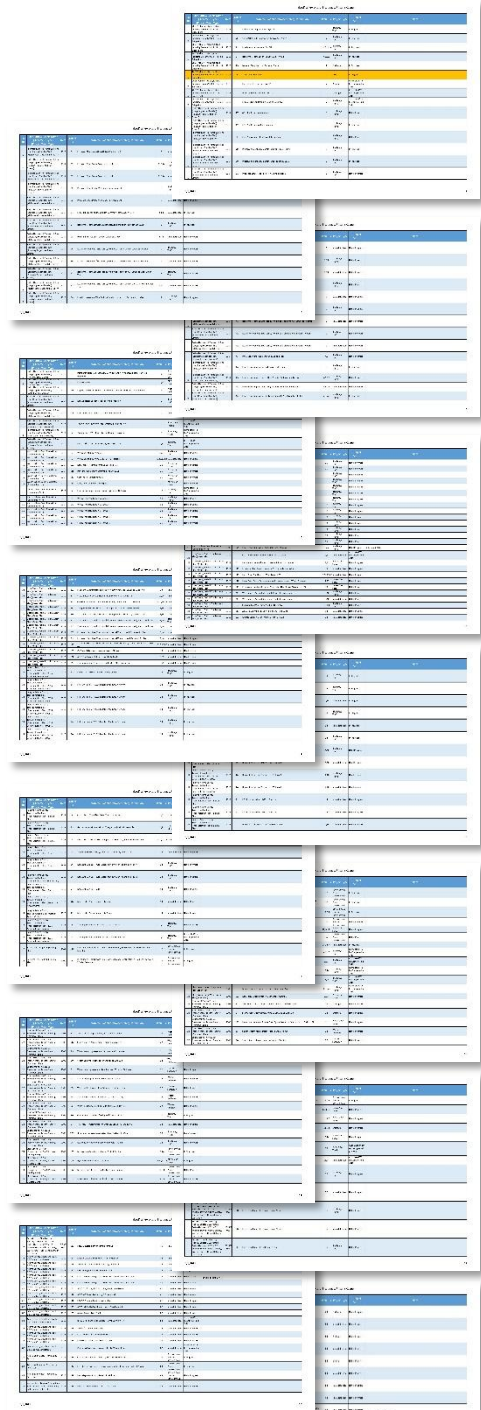
**WILSON**  
& COMPANY

# Project Identification

- *Full Project List*
  - Literature Review
    - 88 Previous Studies
  - Stakeholder Input
    - Public Meeting
    - Focus Group Meeting
    - Community Workshop
    - Adjacent Cities
  - GIS Files and Database
  - 220 Projects Identified
    - 23 deemed completed
    - 13 deemed no longer relevant
- *Project Vetting via Technical Advisory Committee (TAC)*
  - Has the project been built?
  - Is it still valid?
  - Are there redundancies or updates?
- *Project List Database*
  - Project ID
  - Plan ID
  - Plan/Study Report Name
  - Date
  - Recommendation or Project Name/Description
  - Plan IDs
  - Project Type
  - Project Status

# 14 Page Full Project List

Plan ID	Plan/Study/Report Name (Document Type) (Project/Fund Type)	Date	Project ID	Recommendation or Project Name/Description	Plan IDs	Project Type	Project Status
1	US 287 & 69 <sup>th</sup> Bridge Replacement over BNSF & RTD Railways (project highlights)	TBD	1	Federal Blvd Bridge over Little Dry Creek/ BSNF	1,9,22	Roadway/ Traffic	In Progress
1	US 287 & 69 <sup>th</sup> Bridge Replacement over BNSF & RTD Railways (project highlights)	TBD	1	Federal Blvd Bridge over Little Dry Creek/ BSNF	1,9,22	Non-Motorized	In Progress
1	US 287 & 69 <sup>th</sup> Bridge Replacement over BNSF & RTD Railways (project highlights)	TBD	1	Federal Blvd Bridge over Little Dry Creek/ BSNF	1,9,22	Drainage	In Progress
2	Goat Hill Neighborhood (Neighborhood Plan)	TBD	2	Goat Hill Neighborhood Plan - Waiting for plan development & Prioritization	2	Development/ Private Development	In Progress
3	South Westminster Revitalization Strategy (Open House Presentation)	TBD	3	South Westminster Revitalization Strategy (Open House Presentation)	3	Development/ Private Development	Not In Progress
4	Federal Boulevard Health Impact Assessment (HIA)	2015	4	Westminster Federal Streetscape 70-72	4,14,36,40	Roadway/ Traffic	Not In Progress
4	Federal Boulevard Health Impact Assessment (HIA)	2015	7	Intersection Improvement, 64th Ave and Federal Blvd	4	Roadway/ Traffic	Not In Progress
4	Federal Boulevard Health Impact Assessment (HIA)	2015	8	Safe Pedestrian Crossing, Federal Blvd and I-76	4	Non-Motorized	Not In Progress
4	Federal Boulevard Health Impact Assessment (HIA)	2015	9	Safe Pedestrian Crossing, Federal Blvd and US 36	4	Non-Motorized	Not In Progress
4	Federal Boulevard Health Impact Assessment (HIA)	2015	10	Lighting Under bridge Clear Creek Trail	4	Non-Motorized	Not In Progress
4	Federal Boulevard Health Impact Assessment (HIA)	2015	11	Do not Eliminate Affordable Housing as Illustrated in Appendix K	4	Development/ Private Development	In Progress
7	2016 Preliminary Budget Book including 5-Year CIP (CIP) (General Fund)	2015	12	Little Dry Creek Drainage Project	7	Drainage	In Progress
7	2016 Preliminary Budget Book including 5-Year CIP (CIP) (Open Space Fund)	2015	13	Clear Creek Trail Replacement	7	Parks/ Open Space	In Progress
7	2016 Preliminary Budget Book including 5-Year CIP (CIP) (Open Space Fund)	2015	14	Twin Lakes Park Rnnovation	7	Parks/ Open Space	In Progress
7	2016 Preliminary Budget Book including 5-Year CIP (CIP) (Open Space Fund)	2015	15	Clear Creek Trail Access	7	Parks/ Open Space	In Progress
7	2016 Preliminary Budget Book including 5-Year CIP (CIP) (Open Space Fund)	2015	16	Jim Baker Reservoir Renovations	12,22, 7	Parks/ Open Space	In Progress
7	2016 Preliminary Budget Book including 5-Year CIP (CIP) (Road & Bridge Fund)	2015	18	5yr CIP York Rd Improvement, Hwy224-78th Ave	7	Roadway/ Traffic	In Progress
7	2016 Preliminary Budget Book including 5-Year CIP (CIP) (Road & Bridge Fund)	2015	19	York/ Welby St Improvement 78th-88th Ave -CIP	7,22	Roadway/ Traffic	In Progress
7	2016 Preliminary Budget Book including 5-Year CIP (CIP) (Road & Bridge Fund)	2015	20	5yr CIP 58th Ave Rd Improvement, Washignton-York	7	Roadway/ Traffic	In Progress



# Identifying Priorities

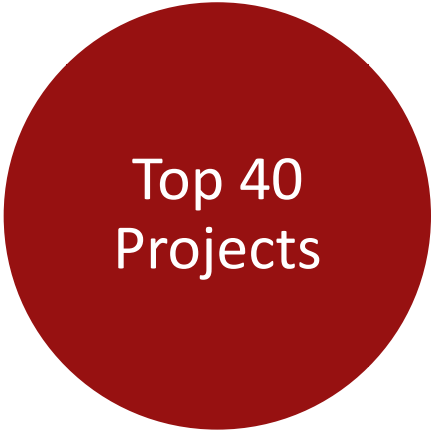
Key opportunities and constraints



Public comments



Technical Advisory Committee comments

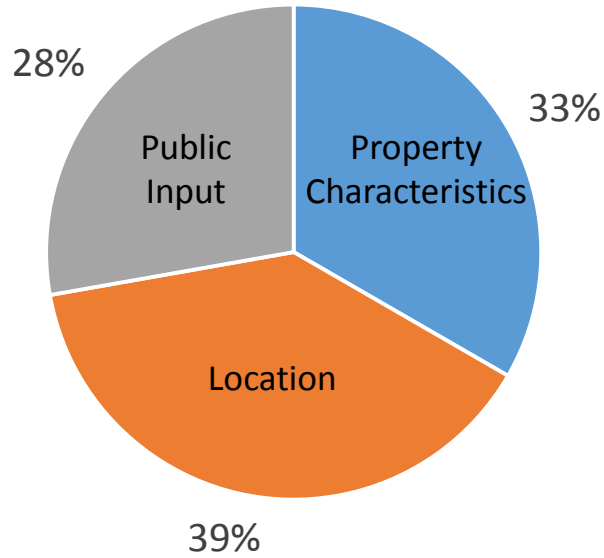


# Propensity Modeling

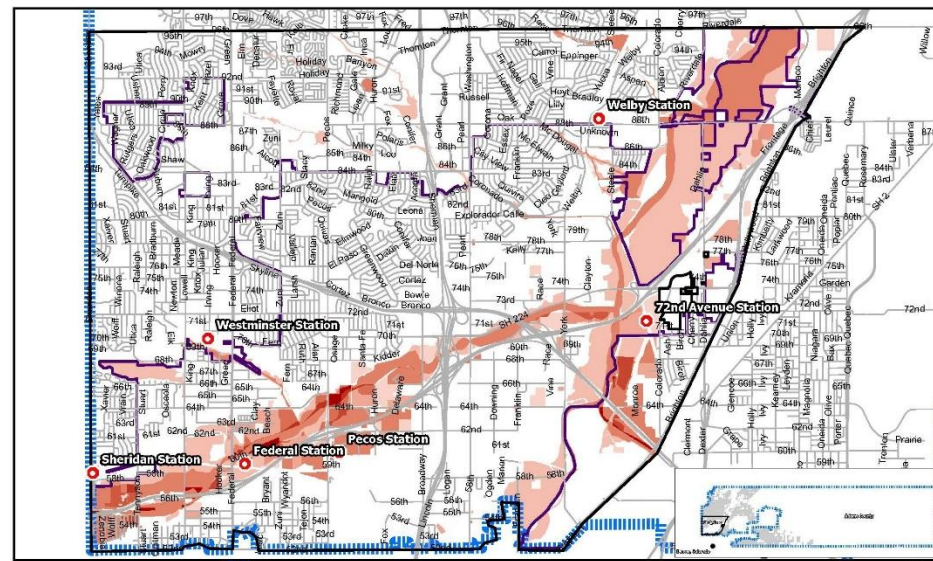
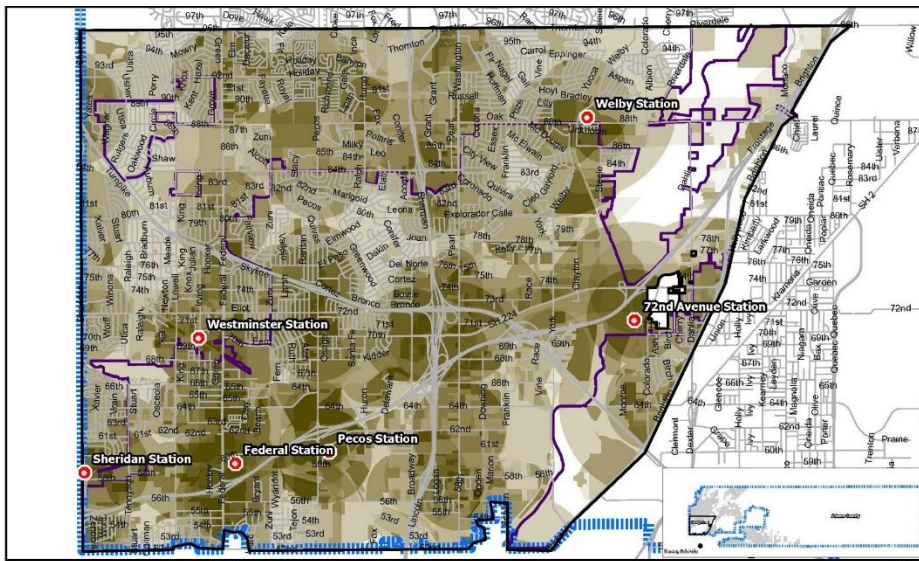
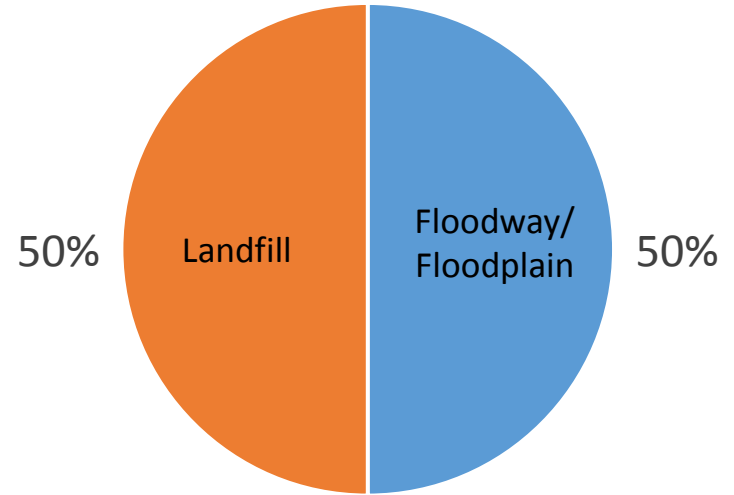
- *Development Propensity Model (DPM)*
  - Addresses development
  - Includes “Attractors” model and “Detractors” model
- *Active Travel Propensity Model (ATPM)*
  - Addresses public priority for walking, biking, and access to transit
  - Includes “Attractors” model and “Generators” model
  - Includes Existing and Future conditions

# Development Propensity Model

## Attractor Submodel Inputs



## Development Detractor Inputs







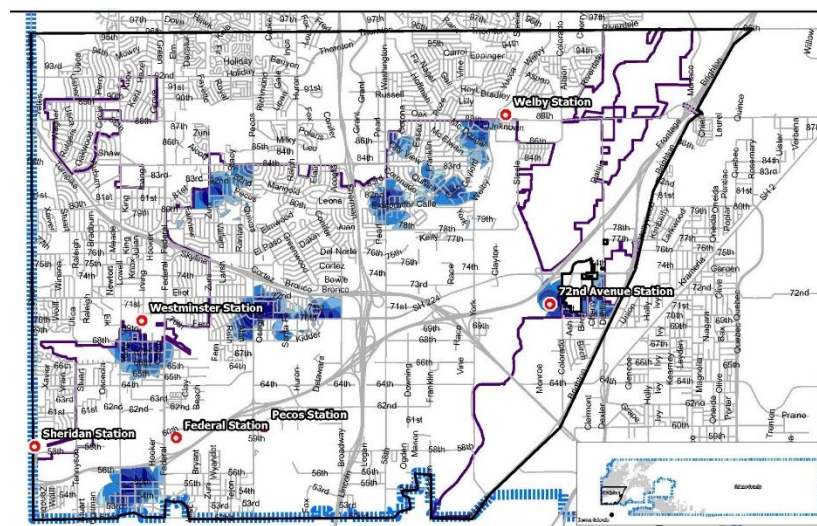
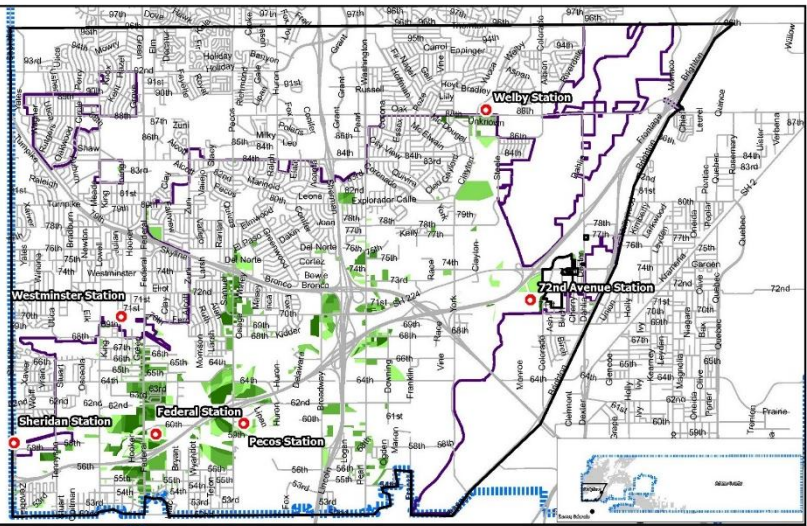
MAKING CONNECTIONS/SW ADAMS COUNTY  
PLANNING AND IMPLEMENTATION PLAN



**WILSON**  
& COMPANY

# Development Propensity

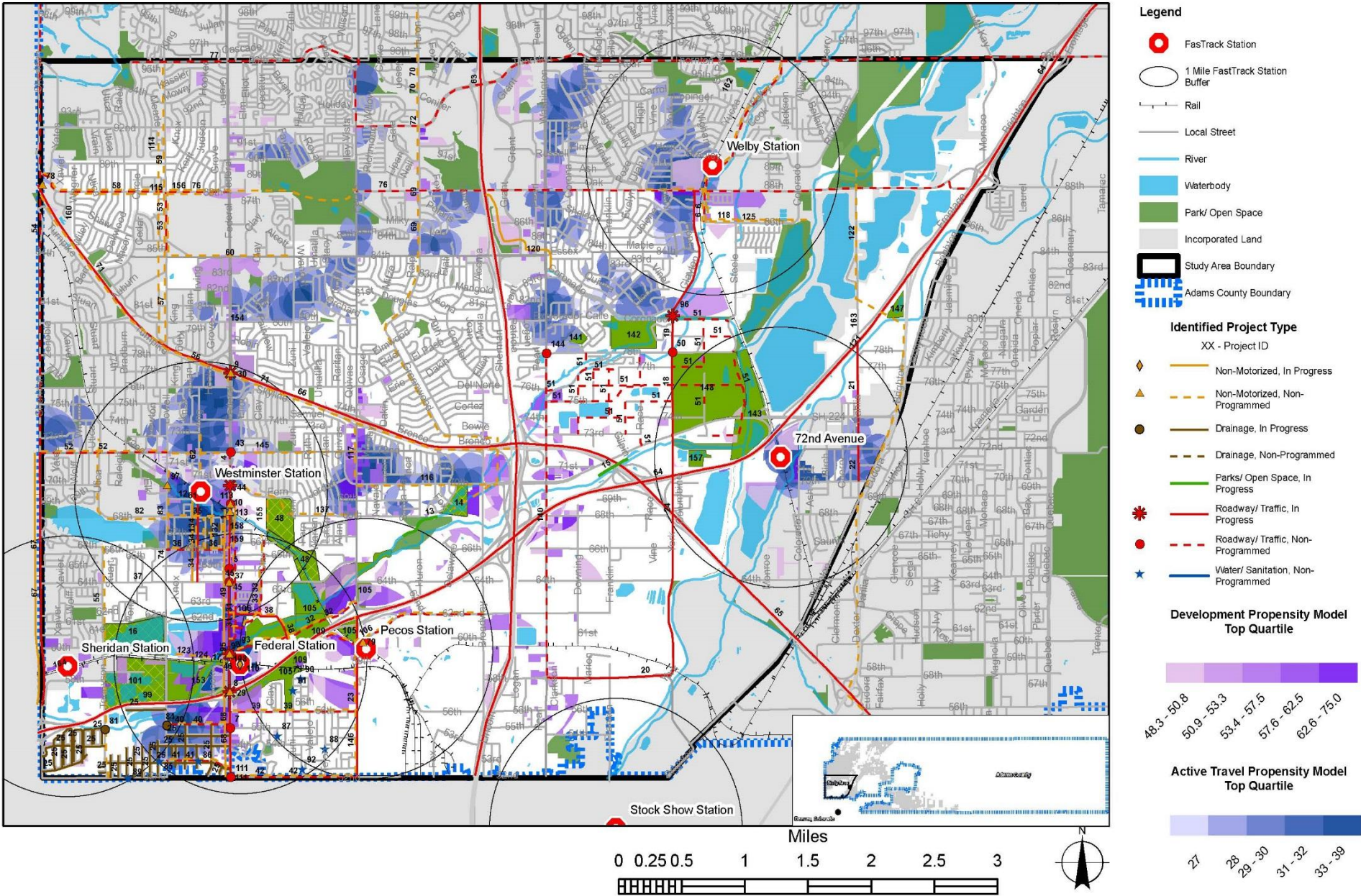
# Active Travel Propensity



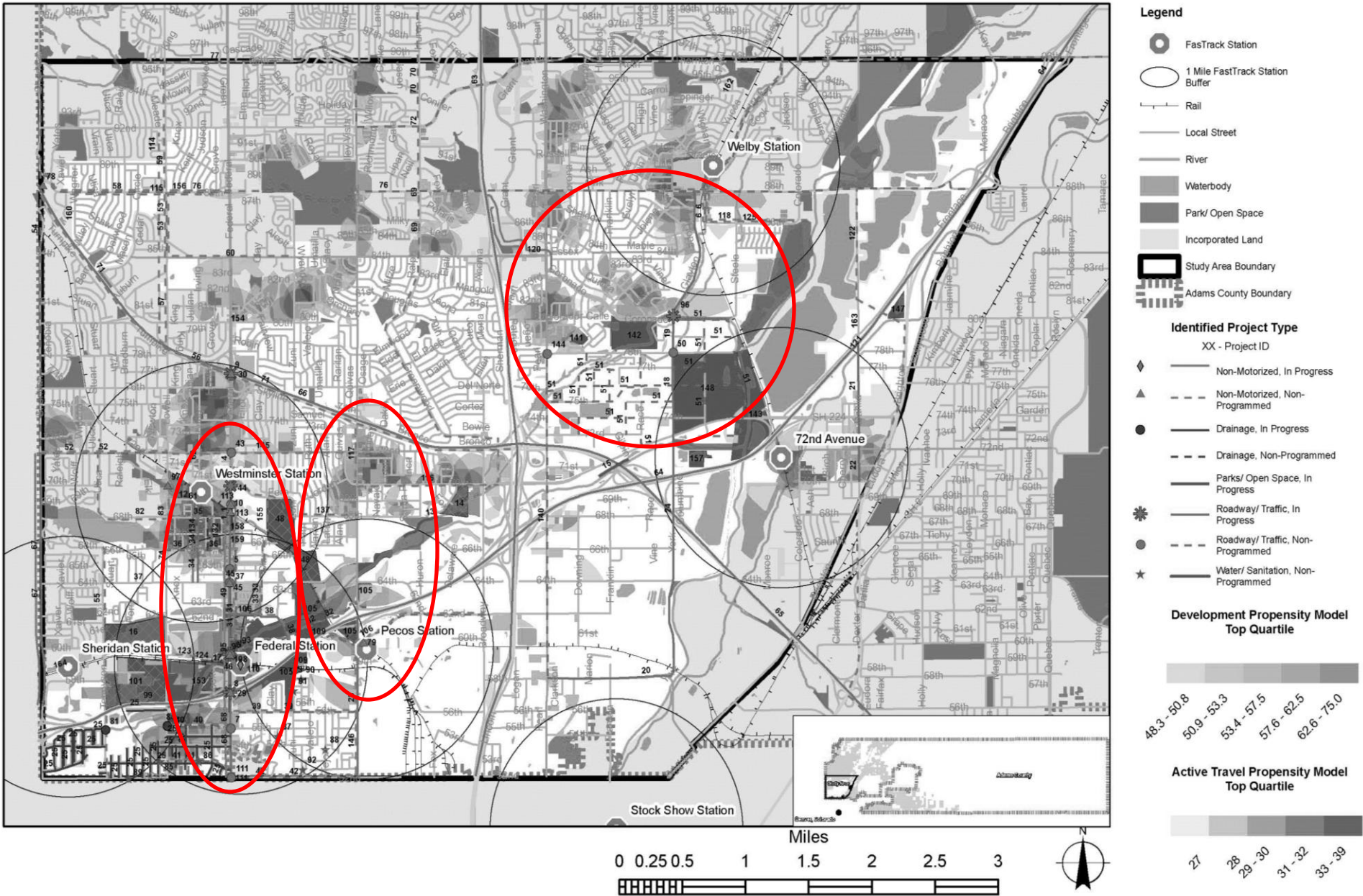
MAKING CONNECTIONS/SW ADAMS COUNTY  
PLANNING AND IMPLEMENTATION PLAN



# Projects and Propensity Map



# Projects and Propensity Map



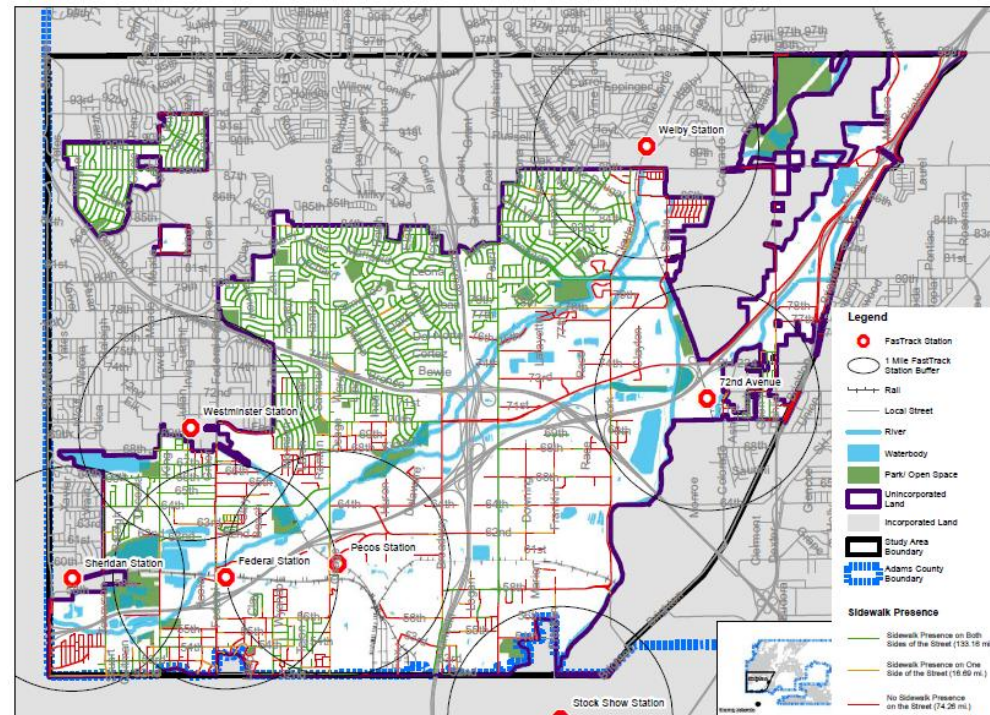
# Top 40 Projects

- *Policies or Programs*
- *Development*
- *Infrastructure*
  - Federal Boulevard and Federal Station Projects
  - Pecos Station and Pecos Commercial District Projects
  - Welby Station and Welby Neighborhood Projects
- *Initial Rank per Category*
  - Proximity to Target Areas
  - Number of Plan References
  - Project Status
  - Partnership Opportunities

# Policies or Programs

## 12 Identified

1. Zoning
2. Parking Regulations
3. Affordable Housing Policy
4. Sidewalk Gap Program
5. Bicycle Facility Program
6. ADA Transition Plan/Program
7. Low Impact Development Standards
8. Neighborhood Toolkit
9. Transportation Demand Management Program
10. Complete Streets Policy and Standards
11. Local Tax or Financing Study
12. "Planning to Projects" Program



# Development Areas

## 5 Target Areas Identified



1. *Federal Gold Line Station Area*
2. *Federal Boulevard (62<sup>nd</sup> to 70<sup>th</sup>)*
3. *Pecos (64<sup>th</sup> to I-76)*
4. *72<sup>nd</sup> and Colorado*
5. *72<sup>nd</sup> and Pecos*

# Infrastructure Projects

- *Broken into three target areas*
- *Federal Station and Federal Boulevard Projects*
- *Pecos Station and Pecos Commercial District Projects*
- *Welby Station and Welby Neighborhood Projects*

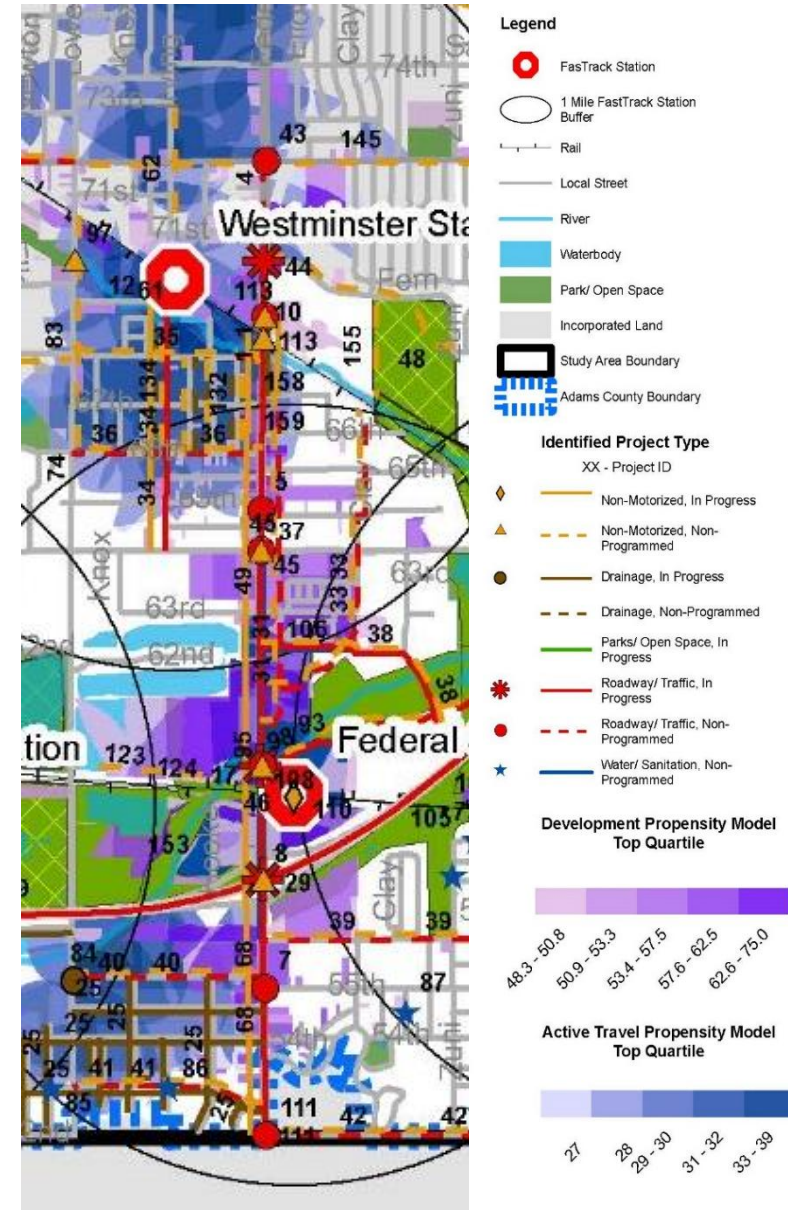


# Infrastructure

## Federal Boulevard and Federal Station

### 13 Projects Identified

1. Federal Boulevard Comprehensive Street Design
2. Federal Boulevard Waterline Improvement
3. Little Dry Creek/Federal Boulevard Bridge
4. Intersection Improvements
5. 70<sup>th</sup> to 72<sup>nd</sup> Streetscape and Intersection Improvement
  - Westminster Partnership Project
6. 60<sup>th</sup> Avenue/Clear Creek Parkway
7. Removing target properties from floodplain
8. Park/Open Space & Trail Improvements
9. New Elm Court (61<sup>st</sup> to 67<sup>th</sup>)
10. New Clay Street (Federal Blvd to Little Dry Creek)
11. I-76 and Federal Ramp
12. US 36 and Federal Ramp
13. Clay Community Outfall

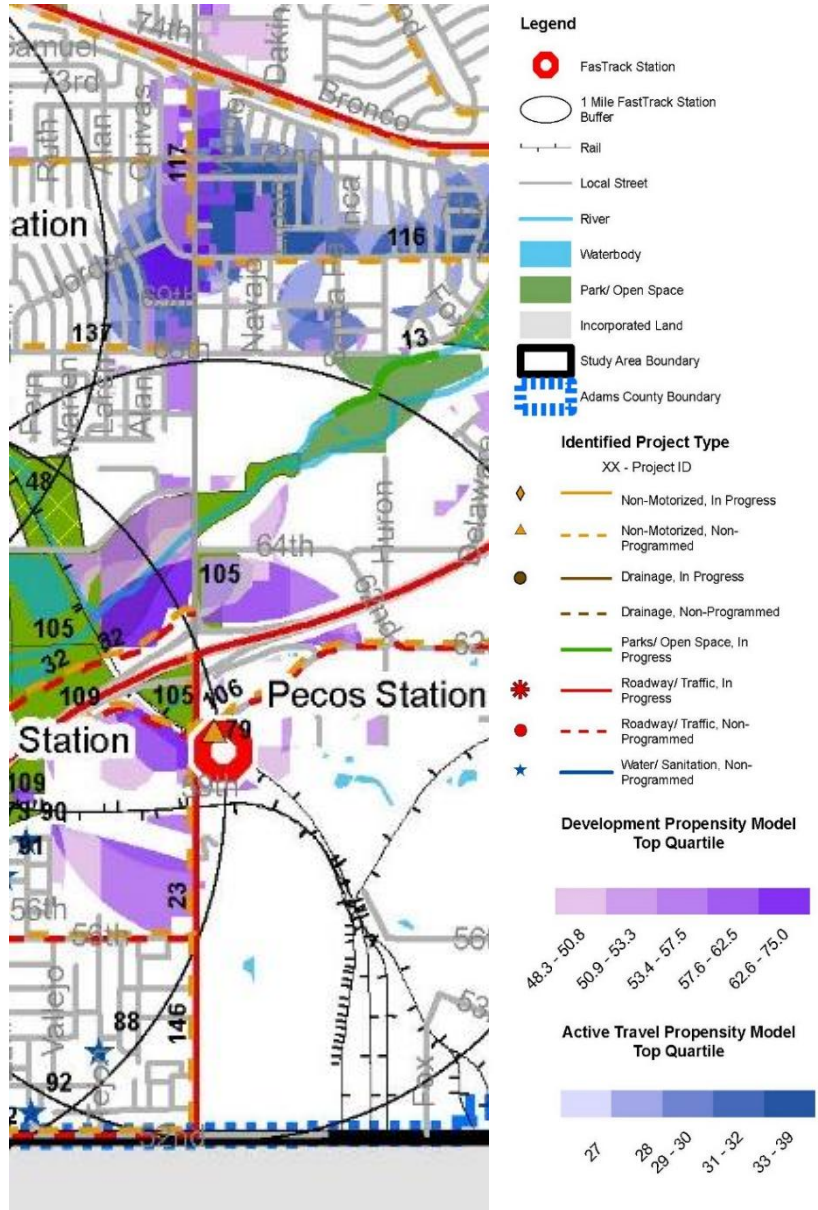


# Infrastructure

## Pecos Station and Pecos Commercial District

### 5 Projects Identified

1. *Pecos Street Improvements*
2. *Pecos Station Area Improvements*
3. *Pecos/US 36 Commercial Area Non-motorized Improvements*
4. *New Parks/Open Space*
5. *US 36 Multi-use Path*



# Infrastructure

## Welby Station and Welby Neighborhood

### 6 Projects Identified

1. *York/Welby Street Improvements*
2. *86<sup>th</sup> and 88<sup>th</sup> Improvements*
  - Thornton Partnership Project
3. *York Street Water and Sewer Improvements*
  - North Washington Water and Sanitation Partnership Project
4. *Park and Trail Improvements*
5. *New Welby Area Roads*
6. *78<sup>th</sup> Street Improvements*



# Polling Exercises

Board/Dot Polling & Electronic Polling



MAKING CONNECTIONS/SW ADAMS COUNTY  
PLANNING AND IMPLEMENTATION PLAN



**WILSON**  
& COMPANY

# Polling: What do you need?

- *Board Dot Polling*
  - 2 Dots per Infrastructure Category (6 total)
  - Post-its for Policies and Programs Map
  - Pen or Pencil
  - Handouts for Note Taking
- *Electronic Polling*
  - Handouts for Note Taking
  - Polling Keypad

# Board Polling

- *One Board per Category*
  - Policies and Programs
  - Development Areas
  - Federal Boulevard and Federal Station Infrastructure Projects
  - Pecos Station and Pecos Commercial District Infrastructure Projects
  - Welby Station and Welby Neighborhood Infrastructure Projects
- *2 Dots per Infrastructure Board*
- *Post-its for Policies and Programs Map*
- *Pen or Pencil*
- *Handouts for Note Taking*

# Electronic Polling

- *6 Questions*
- *Notice words in the questions like 'Rank' or 'Choose'*
- *Reference your handout or notes*
- *Make sure you have a polling keypad!*



# Project Areas

**Rank 1 through 4 how you would prioritize the areas displayed on the boards tonight.**

*(1 being highest priority, 4 being lowest priority)*

- A. Federal Boulevard and Federal Station Projects
- B. Pecos Station and Pecos Commercial District Projects
- C. Welby Station and Welby Neighborhood Projects
- D. Other areas of unincorporated Adams County



# Policies and Programs (1 of 2)

**Choose** the top 3 policies and programs that you support the most.

- A. Zoning Revisions
- B. Parking Regulations Revisions
- C. Affordable Housing Policy
- D. Low Impact Development Standards
- E. Neighborhood Toolkit Program
- F. “Planning to Projects” Program

## Policies and Programs (2 of 2)

**Choose** the top 3 policies and programs that you support the most.

- A. Sidewalk Gap Program
- B. Bicycle Facility Program
- C. ADA Transition Plan/Program
- D. Transportation Demand Management Program
- E. Complete Streets Policy and Standards
- F. Improvements Funding Study

# Project Types

**Rank the project types in order of which you support the most.**

*(1 being highest priority, 6 being lowest priority)*

- A. **Road projects**
- B. **Sidewalk or Trail projects**
- C. **Sewer/Water/Electric projects**
- D. **Parks and Recreation projects**
- E. Projects that have **multiple components** (e.g. road, sidewalk, sewer, trail, etc.) all at once
- F. **Other-** please respond in detail on your comment card

# Funding and Financing Options

***DISCLAIMER:*** This exercise is meant to explore different options so the County may make informed decisions. In no way does the questions or responses mean the County will institute a new tax. Further analysis and discussions would need to occur if we explore these questions and responses further.

# Funding and Financing Options (1 of 2)

*Would you support a local tax or voter-approved financing option that would pay for a specific project list in this area?*

- A. No new taxes or financing option
- B. Depends on the project list
- C. Depends on the type of tax or financing option

# Funding and Financing Options (2 of 2)

**Rank** the local tax or financing option in order of which you would support the most.

(1 being highest priority, 6 being lowest priority)

- A. Special Use Tax
- B. Local Improvement Districts (LIDs)
- C. Public Improvement Districts (PIDs)
- D. Infrastructure Authority/Intergovernmental Agreement
- E. Bond Measure
- F. I don't support any new taxes or financing options

# Next Steps



MAKING CONNECTIONS/SW ADAMS COUNTY  
PLANNING AND IMPLEMENTATION PLAN



# Next Steps

- *Technical Advisory Committee Meeting: 05/03/2016*
- *Working Paper 2: Synthesis Report*
- *Local City Consultation: May 2016*
- *Focus Group Meeting: July/August 2016*
- *Top 10 List & Implementation Strategies*
- *Neighborhood Meeting: September 2016*



# Project Contacts

## Contact Information – English

**Abel Montoya or Rachel Bacon**, County Project Managers

Office of Long Range Strategic Planning

Tel. (720) 523-6863

AMontoya@adcogov.org

Rbacon@adcogov.org

## Información de contacto - Español

**Victoria Mendoza**, Asesora.

Tel. (303) 239-5325

informacion@heinrich.com

Visit the project website for periodic updates on the project process.  
[www.adcogov.org/makingconnections](http://www.adcogov.org/makingconnections)